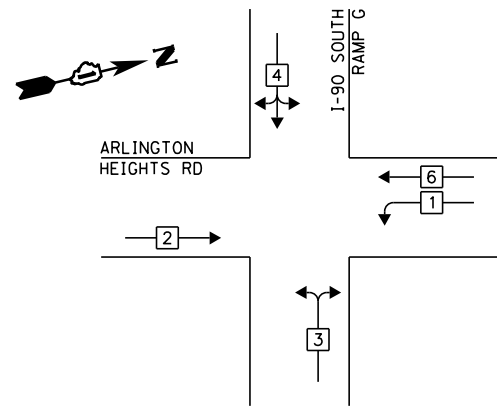


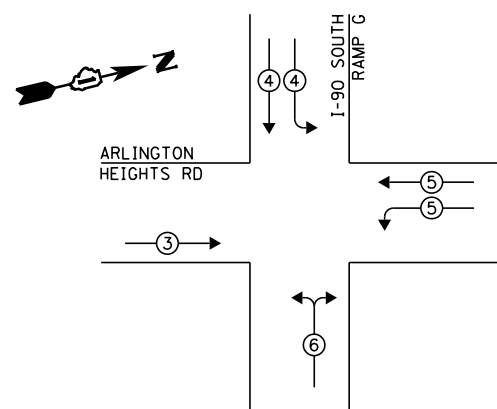
EXISTING CONTROLLER SEQUENCE



LEGEND:

- ◀ * → SINGLE ENTRY PHASE
- ◀ • → DUAL ENTRY PHASE
- ◀ • → PEDESTRIAN PHASE
- ◀ • → OVERLAP

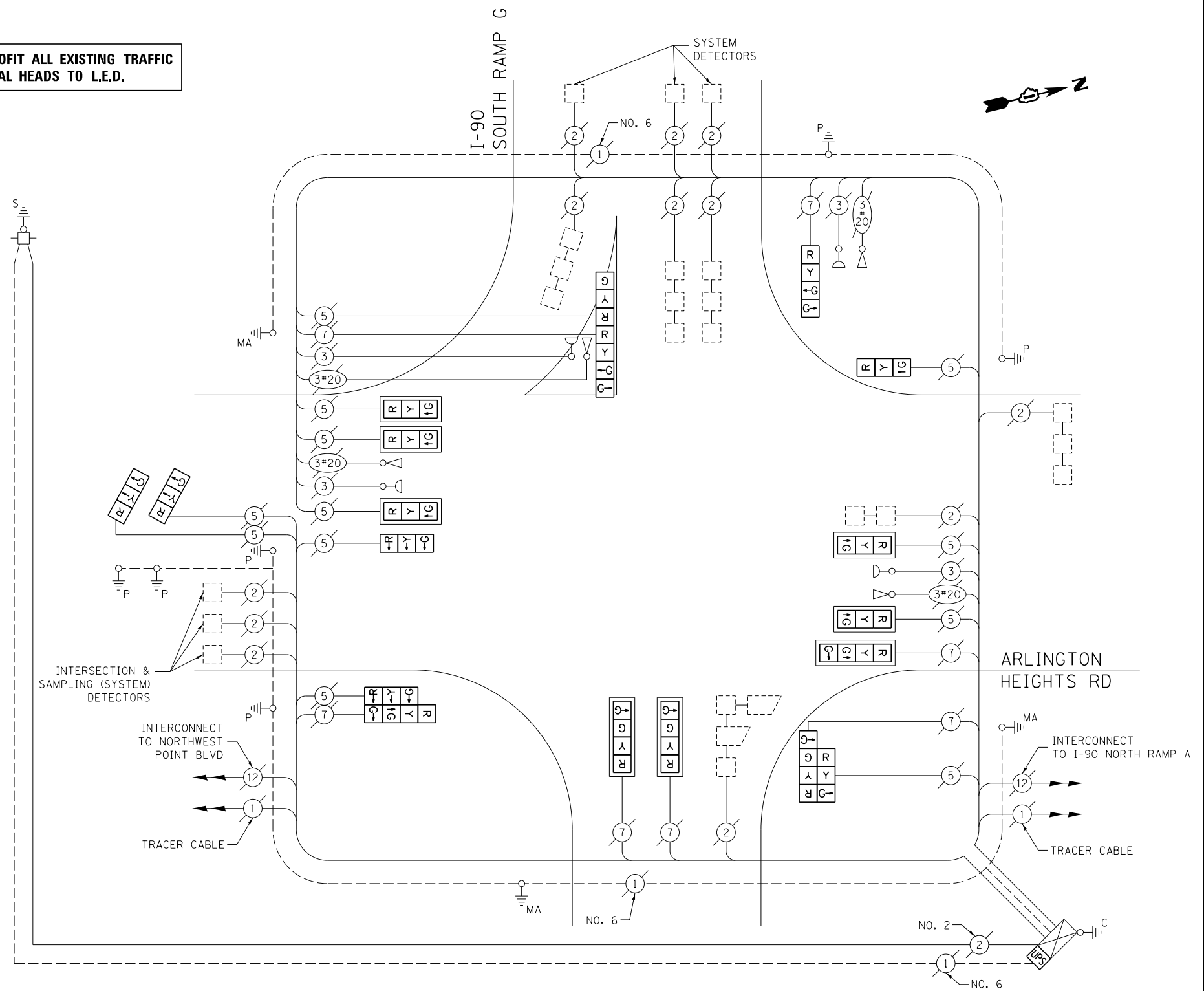
EXISTING PHASE DESIGNATION DIAGRAM



EXISTING EMERGENCY VEHICLE PREEMPTION SEQUENCE

EXISTING EMERGENCY VEHICLE PREEMPTORS				
EMERGENCY VEHICLE PREEMPTOR	3	4	5	6
MOVEMENT	—	IL	FL	T

RETROFIT ALL EXISTING TRAFFIC SIGNAL HEADS TO L.E.D.



CABLE PLAN

(NOT TO SCALE)

UPS SHALL BE INSTALLED ON THE LEFT SIDE OF THE CONTROLLER CABINET DUE TO PHYSICAL CONSTRAINT, OR AS DIRECTED BY THE ENGINEER

SCHEDULE OF QUANTITIES

ITEM DESCRIPTION	UNIT	TOTAL QTY.
MAINTENANCE OF EXISTING TRAFFIC SIGNAL INSTALLATION	EACH	1
MODIFY EXISTING CONTROLLER CABINET	EACH	1
UNINTERRUPTABLE POWER SUPPLY, SPECIAL	EACH	1
SIGNAL HEAD, LED, 2-FACE, 1-3 SECTION, 1-4 SECTION, BRACKET MOUNTED, RETROFIT	EACH	3
SIGNAL HEAD, LED, 1-FACE, 3-SECTION, BRACKET MOUNTED, RETROFIT	EACH	4
SIGNAL HEAD, LED, 1-FACE, 3-SECTION, MAST ARM MOUNTED, RETROFIT	EACH	5
SIGNAL HEAD, LED, 1-FACE, 4-SECTION, BRACKET MOUNTED, RETROFIT	EACH	1
SIGNAL HEAD, LED, 1-FACE, 4-SECTION, MAST ARM MOUNTED, RETROFIT	EACH	3

I.D.O.T. TRAFFIC SIGNAL INSTALLATION ELECTRICAL SERVICE REQUIREMENTS					TOTAL WATTAGE
TYPE	NO. OF LAMPS	WATTAGE		% OPERATION	
SIGNAL (RED)	19	INCAND.	LED	0.50	161.5
(YELLOW)	19		25	0.25	118.75
(GREEN)	26		15	0.25	97.5
ARROW	-		12	0.10	-
PED. SIGNAL	-		25	1.00	-
CONTROLLER	1		100	1.00	100.0
ILLUM. SIGN	-		25	0.05	-
VIDEO SYSTEM	-		150	1.00	-
FLASHER				0.50	
ENERGY COSTS TO:			TOTAL =		477.75

ILLINOIS DEPARTMENT OF TRANSPORTATION
 DIVISION OF HIGHWAY/DISTRICT 1
 201 WEST CENTER COURT/SCHAUMBURG, ILLINOIS 60196-1096
 ENERGY SUPPLY: CONTACT: DAVE SCHACHT
 PHONE: (630) 437-2129
 COMPANY: COMMONWEALTH EDISON

STATE OF ILLINOIS
 DEPARTMENT OF TRANSPORTATION

CABLE PLAN, PHASE DESIGNATION DIAGRAM, EMERGENCY VEHICLE PREEMPTION SEQUENCE, AND SCHEDULE OF QUANTITIES
 ARLINGTON HEIGHTS RD AT I-90 SOUTH RAMP G

F.A. RTÉ.	SECTION	COUNTY	TOTAL SHEETS	SHEET NO.
--	2014-008T5	COOK	81	28
CONTRACT NO. 60X83				
ILLINOIS FED. AID PROJECT				

FILE NAME =	USER NAME =	DESIGNED -	REVISED -
et:\pw_work\p\pidot\poc\echal\0381174\012314-sh-t-tsl.dgn	poc1echal	IP	IP
Default		AW / LP	5/15/2014

TS 2939