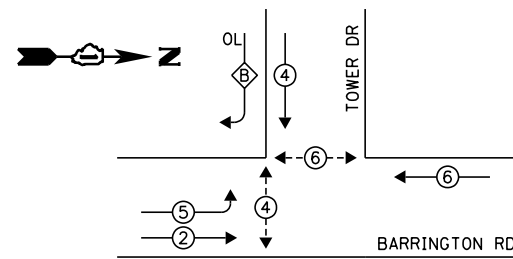


**EXISTING CONTROLLER SEQUENCE**



$$\frac{\text{OVERLAP LETTER}}{B} = \frac{\text{PERMISSIVE PHASE}}{4} + \frac{\text{PROTECTED PHASE}}{5}$$

**LEGEND:**

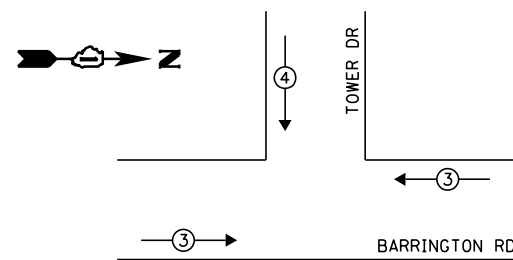
- ◀ ⊠ ▶ SINGLE ENTRY PHASE
- ◀ ⊙ ▶ DUAL ENTRY PHASE
- ◀ ⊙ ▶ PEDESTRIAN PHASE
- ◀ ⊙ ▶ OVERLAP

NOTE:  
THE TRAFFIC SIGNAL CONTROLLER EQUIPMENT FOR THIS PROJECT SHALL BE "ECONOLITE" TO MATCH THE EXISTING ADJACENT SYSTEM.

- ① REPLACE 14 FT PAINTED POST. RE-USE EXISTING FOUNDATION.
- ② REPLACE 16 FT PAINTED POST. RE-USE EXISTING FOUNDATION.
- ③ REPLACE 18 FT PAINTED POST. RE-USE EXISTING FOUNDATION.

**EXISTING PHASE DESIGNATION DIAGRAM**

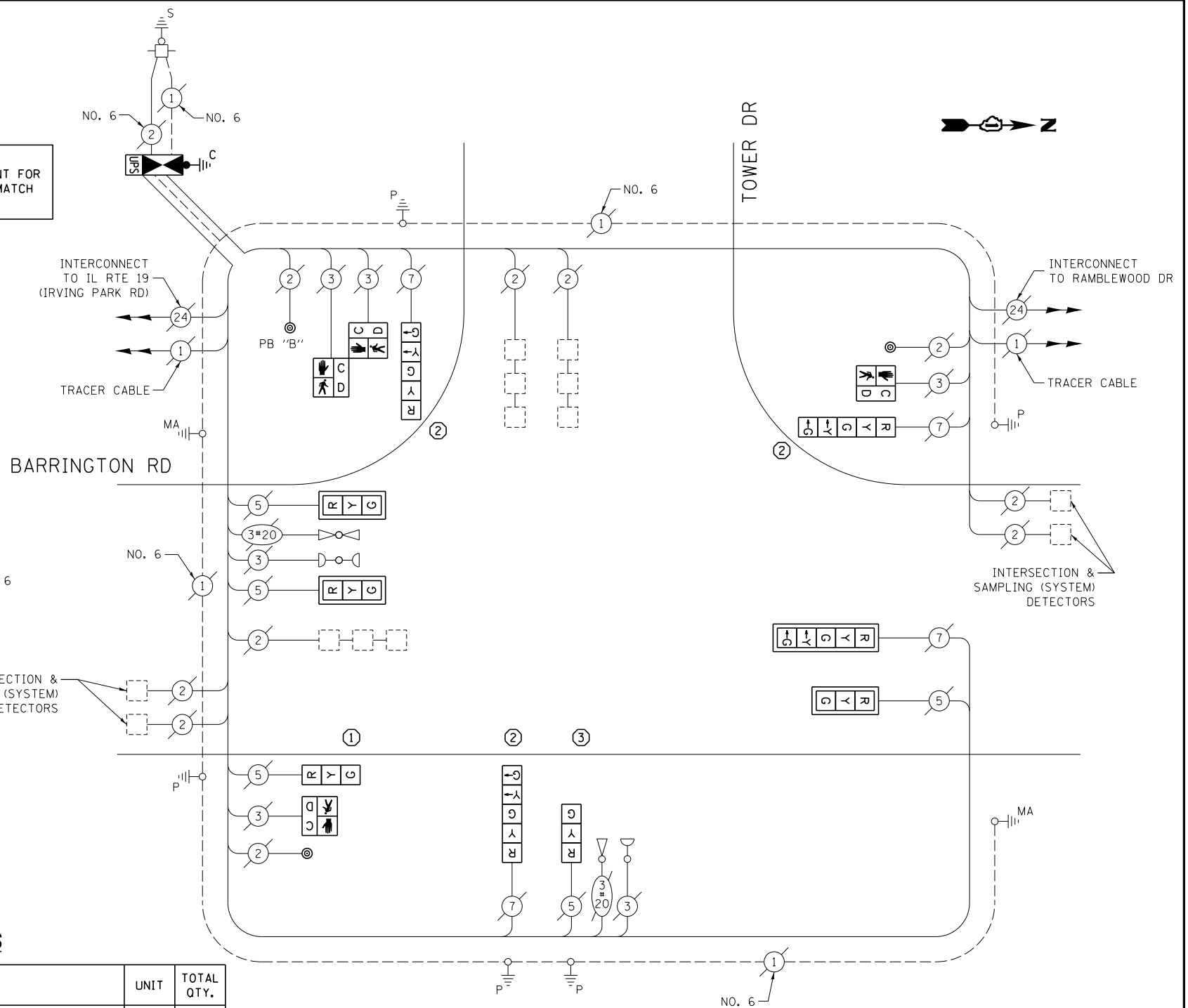
**EXISTING EMERGENCY VEHICLE PREEMPTION SEQUENCE**



EXISTING EMERGENCY VEHICLE PREEMPTORS		
EMERGENCY VEHICLE PREEMPTOR	3	4
MOVEMENT	—	

NOTE:  
PUSH BUTTON "B" SHALL PLACE A CALL IN PHASES 4 AND 6

INTERSECTION & SAMPLING (SYSTEM) DETECTORS



**CABLE PLAN**

(NOT TO SCALE)

THE FOLLOWING ITEMS SHALL BE REMOVED BY THE CONTRACTOR AND SHALL BE DISPOSED OF BY THEM OUTSIDE THE RIGHT-OF-WAY AT THEIR EXPENSE. THE SALVAGE VALUE OF THE REMOVED EQUIPMENT SHALL BE REFLECTED IN THE CONTRACT BID PRICE.

- 1 EACH CONTROLLER AND CABINET (COMPLETE)
- 5 EACH TRAFFIC SIGNAL POST
- 5 EACH 3-SECTION SIGNAL HEAD
- 4 EACH 5-SECTION SIGNAL HEAD
- 4 EACH TRAFFIC SIGNAL BACKPLATE
- 4 EACH PEDESTRIAN SIGNAL HEAD
- 3 EACH PEDESTRIAN PUSH-BUTTON

**SCHEDULE OF QUANTITIES**

ITEM DESCRIPTION	UNIT	TOTAL QTY.
MAINTENANCE OF EXISTING TRAFFIC SIGNAL INSTALLATION	EACH	1
TRANSCEIVER - FIBER OPTIC	EACH	1
TRAFFIC SIGNAL POST, GALVANIZED STEEL 14 FT.	EACH	1
TRAFFIC SIGNAL POST, GALVANIZED STEEL 16 FT.	EACH	3
TRAFFIC SIGNAL POST, GALVANIZED STEEL 18 FT.	EACH	1
SIGNAL HEAD, LED, 1-FACE, 3-SECTION, MAST-ARM MOUNTED	EACH	3
SIGNAL HEAD, LED, 1-FACE, 3-SECTION, BRACKET MOUNTED	EACH	2
SIGNAL HEAD, LED, 1-FACE, 5-SECTION, BRACKET MOUNTED	EACH	3
SIGNAL HEAD, LED, 1-FACE, 5-SECTION, MAST-ARM MOUNTED	EACH	1
PEDESTRIAN SIGNAL HEAD, LED, 1-FACE, BRACKET MOUNTED W/ COUNTDOWN TIMER	EACH	2
PEDESTRIAN SIGNAL HEAD, LED, 2-FACE, BRACKET MOUNTED W/ COUNTDOWN TIMER	EACH	1
TRAFFIC SIGNAL BACKPLATE, LOUVERED, ALUMINUM	EACH	4
INDUCTIVE LOOP DETECTOR	EACH	7
REMOVE EXISTING TRAFFIC SIGNAL EQUIPMENT	EACH	1
FULL-ACTUATED CONTROLLER AND TYPE IV CABINET, SPECIAL	EACH	1
UNINTERRUPTABLE POWER SUPPLY, SPECIAL	EACH	1
PEDESTRIAN PUSH-BUTTON, NON-LATCHING	EACH	3
REMOVE AND REPLACE ANCHOR BOLTS	EACH	3

I.D.O.T. TRAFFIC SIGNAL INSTALLATION ELECTRICAL SERVICE REQUIREMENTS					TOTAL WATTAGE
TYPE	NO. OF LAMPS	WATTAGE		% OPERATION	
SIGNAL (RED)	9	INCAND.	17	0.50	76.5
(YELLOW)	9		25	0.25	56.25
(GREEN)	9		15	0.25	33.75
ARROW	8		12	0.10	9.6
PED. SIGNAL	4		25	1.00	100.0
CONTROLLER	1		100	1.00	100.0
ILLUM. SIGN	-		25	0.05	-
VIDEO SYSTEM	-		150	1.00	-
FLASHER				0.50	
ENERGY COSTS TO:	TOTAL =				376.1

VILLAGE OF HANOVER PARK  
2121 W. LAKE ST  
HANOVER PARK, IL 60133  
ENERGY SUPPLY: CONTACT: JOE STACHO  
PHONE: (630) 424-5704  
COMPANY: COMMONWEALTH EDISON

FILE NAME =	USER NAME = pocitechal	DESIGNED - IP	REVISED -
es:\pw_work\pocitechal\d0381174\012314-sht-ts4.dgn		DRAWN - IP	REVISED -
Default	PLOT SCALE = 40.0000' / in.	CHECKED - AW / LP	REVISED -
	PLOT DATE = 5/16/2014	DATE - 5/15/2014	REVISED -

STATE OF ILLINOIS  
DEPARTMENT OF TRANSPORTATION

CABLE PLAN, PHASE DESIGNATION DIAGRAM, EMERGENCY VEHICLE PREEMPTION SEQUENCE, AND SCHEDULE OF QUANTITIES  
BARRINGTON RD AT TOWER DR

SCALE: SHEET OF SHEETS STA. TO STA.

F.A. RTE.	SECTION	COUNTY	TOTAL SHEETS	SHEET NO.
--	2014-008T5	COOK	81	44
			CONTRACT NO. 60X83	
ILLINOIS FED. AID PROJECT				

TS 7860