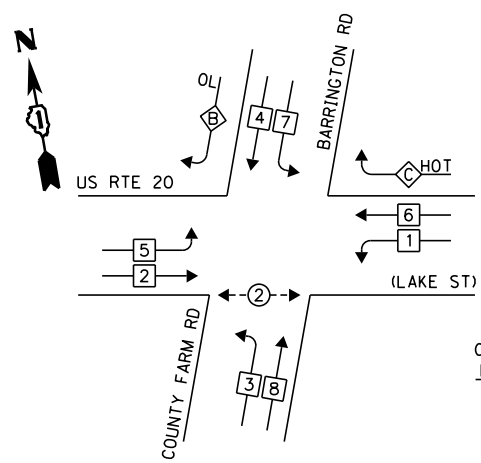


EXISTING CONTROLLER SEQUENCE



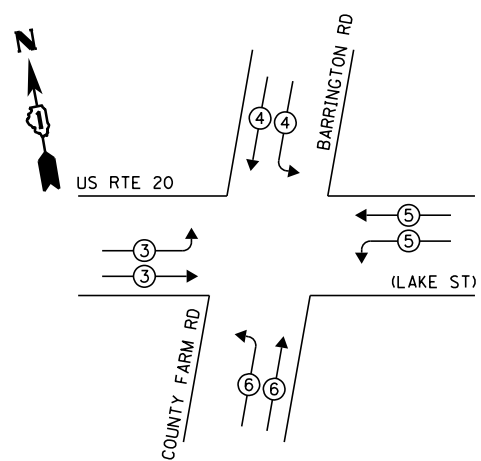
LEGEND:

- ◀*▶ SINGLE ENTRY PHASE
- ◀◦▶ DUAL ENTRY PHASE
- ◀◦▶ PEDESTRIAN PHASE
- ◀◊▶ OVERLAP

OVERLAP LETTER = PERMISSIVE PHASE + PROTECTED PHASE
 B = 4 + 5
 C = CONTINUOUS (HOT)

EXISTING PHASE DESIGNATION DIAGRAM

EXISTING EMERGENCY VEHICLE PREEMPTION SEQUENCE



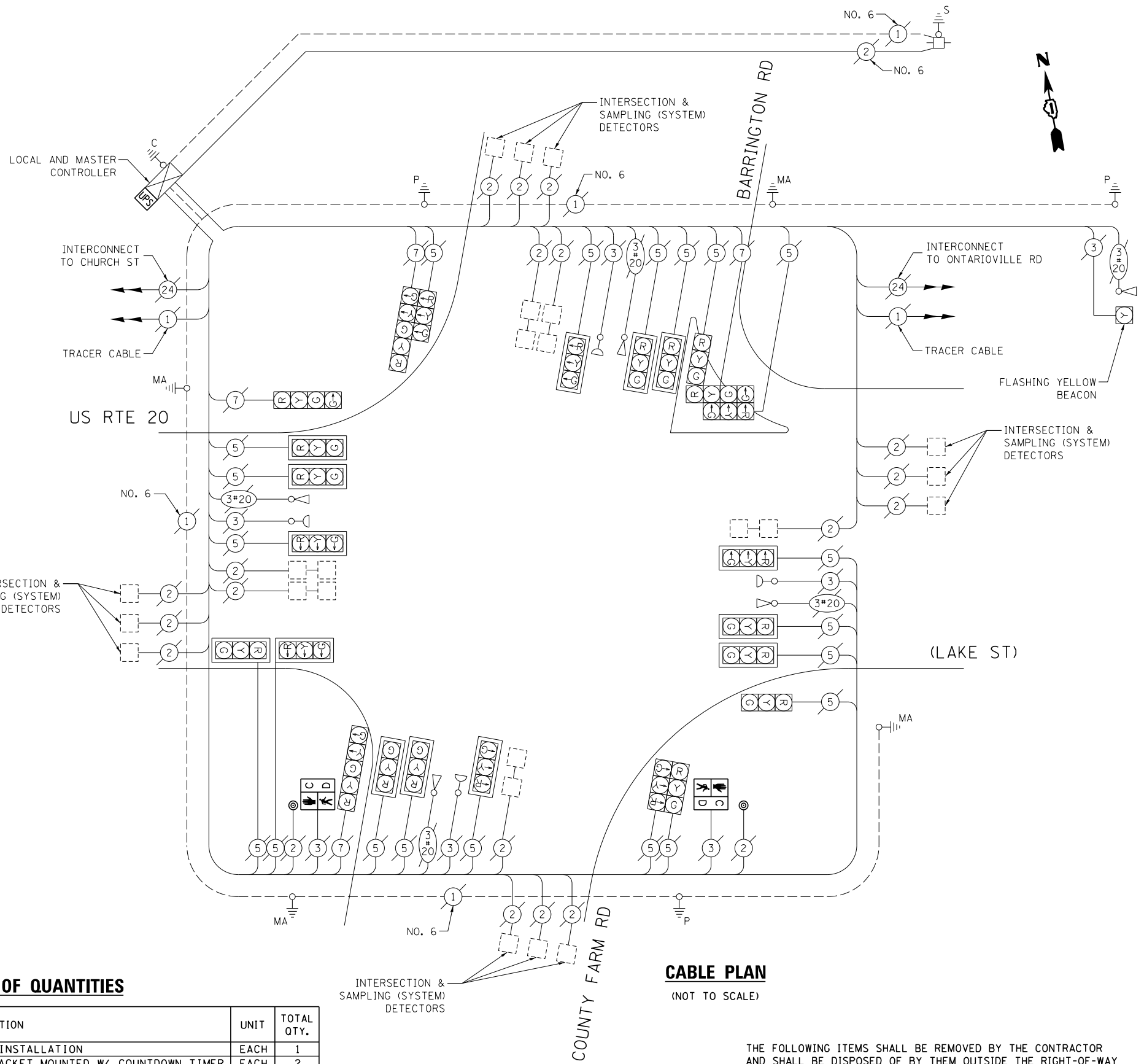
EXISTING EMERGENCY VEHICLE PREEMPTORS				
EMERGENCY VEHICLE PREEMPTOR	3	4	5	6
MOVEMENT	≡	≡	≡	≡

I.D.O.T. TRAFFIC SIGNAL INSTALLATION ELECTRICAL SERVICE REQUIREMENTS					TOTAL WATTAGE
TYPE	NO. OF LAMPS	WATTAGE		% OPERATION	
SIGNAL (RED)	24	INCAND.	17	0.50	204.0
(YELLOW)	24		25	0.25	150.0
(GREEN)	24		15	0.25	90.0
ARROW	4		12	0.10	4.8
PED. SIGNAL	2		25	1.00	50.0
CONTROLLER	2		100	1.00	200.0
ILLUM. SIGN	-		25	0.05	-
VIDEO SYSTEM	-		150	1.00	-
GREEN (HOT)	1		15	1.00	15.0
FLASHER	1		25	0.50	12.5
ENERGY COSTS TO:	TOTAL =				726.3

ILLINOIS DEPARTMENT OF TRANSPORTATION
 DIVISION OF HIGHWAY/DISTRICT 1
 201 WEST CENTER COURT/SCHAUMBURG, ILLINOIS 60196-1096
 ENERGY SUPPLY: CONTACT: JOE STACHO
 PHONE: (630) 424-5704
 COMPANY: COMMONWEALTH EDISON

SCHEDULE OF QUANTITIES

ITEM DESCRIPTION	UNIT	TOTAL QTY.
MAINTENANCE OF EXISTING TRAFFIC SIGNAL INSTALLATION	EACH	1
PEDESTRIAN SIGNAL HEAD, LED, 1-FACE, BRACKET MOUNTED W/ COUNTDOWN TIMER	EACH	2
PEDESTRIAN PUSH-BUTTON	EACH	2
MODIFY EXISTING CONTROLLER CABINET	EACH	1
REMOVE EXISTING TRAFFIC SIGNAL EQUIPMENT	EACH	1
UNINTERRUPTABLE POWER SUPPLY, SPECIAL	EACH	1



CABLE PLAN

(NOT TO SCALE)

THE FOLLOWING ITEMS SHALL BE REMOVED BY THE CONTRACTOR AND SHALL BE DISPOSED OF BY THEM OUTSIDE THE RIGHT-OF-WAY AT THEIR EXPENSE. THE SALVAGE VALUE OF THE REMOVED EQUIPMENT SHALL BE REFLECTED IN THE CONTRACT BID PRICE.

- 2 EACH PEDESTRIAN SIGNAL HEAD
- 2 EACH PEDESTRIAN PUSH-BUTTON

FILE NAME = USER NAME = plscenciai
 c:\pwork\pwork\plscenciai\22314-sh-t-ts4.dgn
 PLOT SCALE = 40.0000' / in.
 PLOT DATE = 5/16/2014

DESIGNED - IP
 DRAWN - IP
 CHECKED - AW / LP
 DATE - 5/15/2014

STATE OF ILLINOIS
 DEPARTMENT OF TRANSPORTATION

CABLE PLAN, PHASE DESIGNATION DIAGRAM, EMERGENCY VEHICLE PREEMPTION SEQUENCE, AND SCHEDULE OF QUANTITIES
 US RTE 20 (LAKE ST) AT BARRINGTON RD /COUNTY FARM RD

SCALE: SHEET OF SHEETS STA. TO STA.

F.A. R.T.E. SECTION COUNTY TOTAL SHEETS SHEET NO.
 -- 2014-008T5 COOK 81 49
 CONTRACT NO. 60X83
 ILLINOIS FED. AID PROJECT

TS 13765