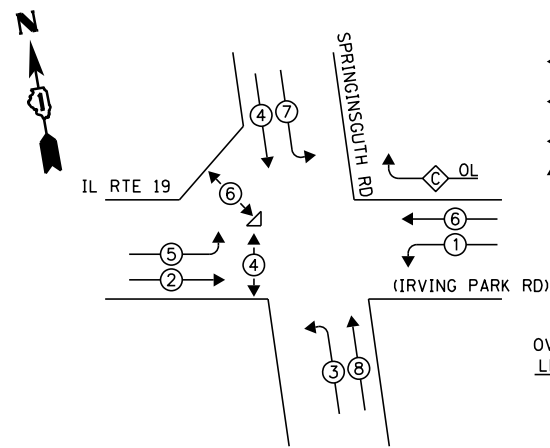


**EXISTING CONTROLLER SEQUENCE**



**LEGEND:**

- ◀ \* → SINGLE ENTRY PHASE
- ◀ \* → DUAL ENTRY PHASE
- ◀ \* → PEDESTRIAN PHASE
- ◀ \* → OVERLAP

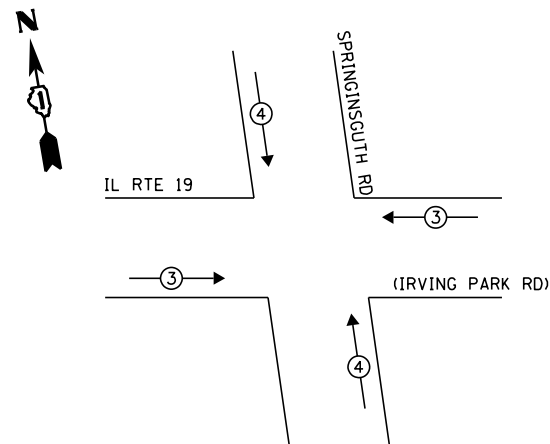
OVERLAP LETTER C = PERMISSIVE PHASE 6 + PROTECTED PHASE 7

**RETROFIT ALL EXISTING TRAFFIC SIGNAL HEADS TO L.E.D.**

NOTE: PUSH BUTTON "B" SHALL PLACE A CALL IN PHASES 4 AND 5

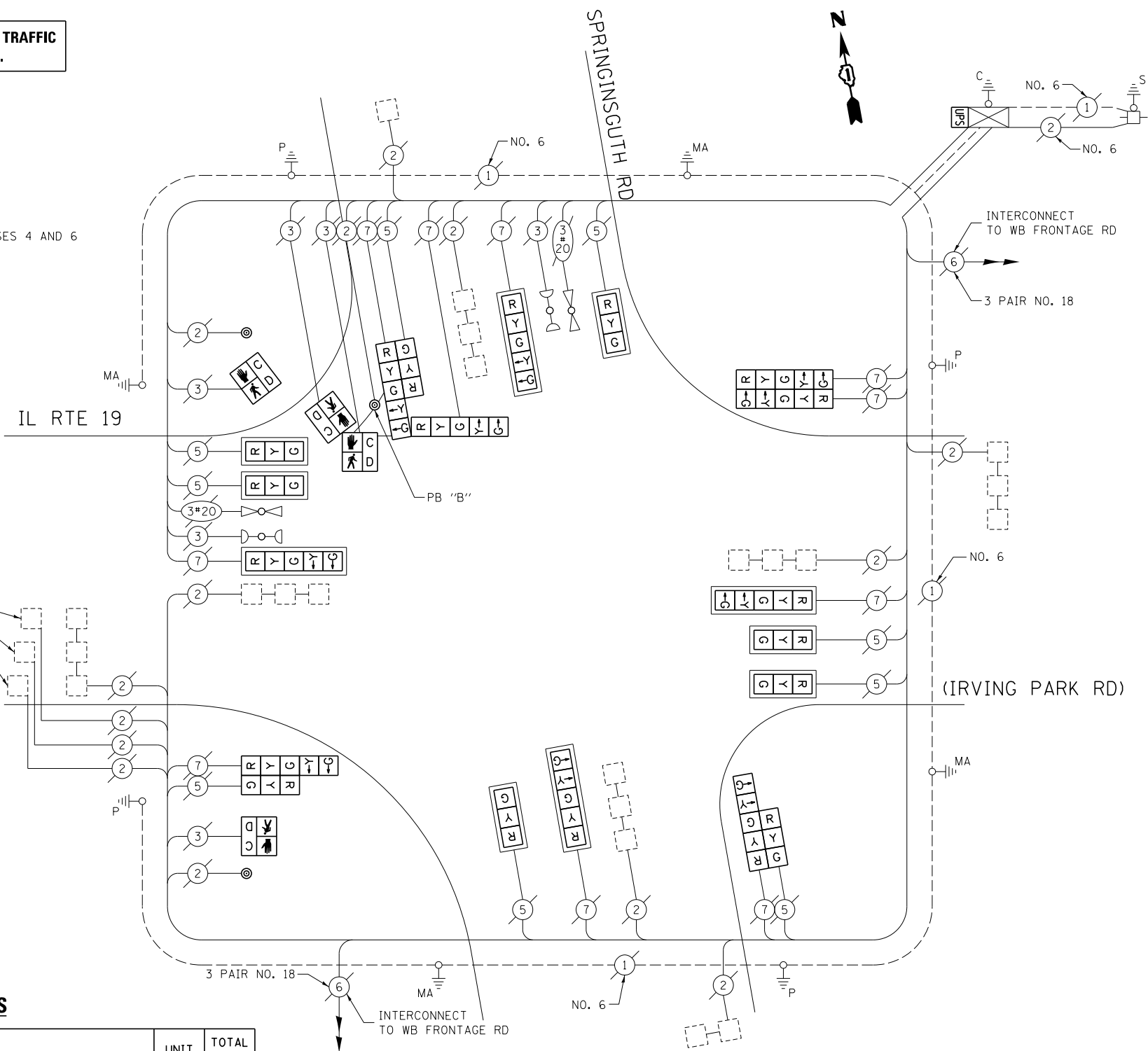
**EXISTING PHASE DESIGNATION DIAGRAM**

**EXISTING EMERGENCY VEHICLE PREEMPTION SEQUENCE**



EXISTING EMERGENCY VEHICLE PREEMPTORS			
EMERGENCY VEHICLE PREEMPTOR	3	4	
MOVEMENT	—		

SYSTEM DETECTORS



**CABLE PLAN**

(NOT TO SCALE)

THE FOLLOWING ITEMS SHALL BE REMOVED BY THE CONTRACTOR AND SHALL BE DISPOSED OF BY THEM OUTSIDE THE RIGHT-OF-WAY AT THEIR EXPENSE. THE SALVAGE VALUE OF THE REMOVED EQUIPMENT SHALL BE REFLECTED IN THE CONTRACT BID PRICE.

- 4 EACH PEDESTRIAN SIGNAL HEAD
- 3 EACH PEDESTRIAN PUSH-BUTTON

**SCHEDULE OF QUANTITIES**

ITEM DESCRIPTION	UNIT	TOTAL QTY.
MAINTENANCE OF EXISTING TRAFFIC SIGNAL INSTALLATION	EACH	1
PEDESTRIAN SIGNAL HEAD, LED, 1-FACE, BRACKET MOUNTED W/ COUNTDOWN TIMER	EACH	2
PEDESTRIAN SIGNAL HEAD, LED, 2-FACE, BRACKET MOUNTED W/ COUNTDOWN TIMER	EACH	1
MODIFY EXISTING CONTROLLER CABINET	EACH	1
REMOVE EXISTING TRAFFIC SIGNAL EQUIPMENT	EACH	1
UNINTERRUPTABLE POWER SUPPLY, SPECIAL	EACH	1
SIGNAL HEAD, LED, 2-FACE, 1-3 SECTION, 1-5 SECTION, BRACKET MOUNTED, RETROFIT	EACH	2
SIGNAL HEAD, LED, 3-FACE, 1-3 SECTION, 2-5 SECTION, BRACKET MOUNTED, RETROFIT	EACH	1
SIGNAL HEAD, LED, 1-FACE, 3-SECTION, MAST ARM MOUNTED, RETROFIT	EACH	6
SIGNAL HEAD, LED, 1-FACE, 5-SECTION, MAST ARM MOUNTED, RETROFIT	EACH	4
SIGNAL HEAD, LED, 2-FACE, 5-SECTION, BRACKET MOUNTED RETROFIT	EACH	1
PEDESTRIAN PUSH-BUTTON, NON-LATCHING	EACH	3

I.D.O.T. TRAFFIC SIGNAL INSTALLATION ELECTRICAL SERVICE REQUIREMENTS					TOTAL WATTAGE
TYPE	NO. OF LAMPS	WATTAGE		% OPERATION	
SIGNAL (RED)	19	INCAND.	LED	0.50	161.5
(YELLOW)	19		25	0.25	118.75
(GREEN)	19		15	0.25	71.25
ARROW	20		12	0.10	24.0
PED. SIGNAL	4		25	1.00	100.0
CONTROLLER	1		100	1.00	100.0
ILLUM. SIGN	-		25	0.05	-
VIDEO SYSTEM	-		150	1.00	-
FLASHER				0.50	
ENERGY COSTS TO:	TOTAL =				575.5

ILLINOIS DEPARTMENT OF TRANSPORTATION  
DIVISION OF HIGHWAY/DISTRICT 1  
201 WEST CENTER COURT/SCHAUMBURG, ILLINOIS 60196-1096

ENERGY SUPPLY: CONTACT: DAVE SCHACHT  
PHONE: (630) 437-2129  
COMPANY: COMMONWEALTH EDISON

STATE OF ILLINOIS  
DEPARTMENT OF TRANSPORTATION

CABLE PLAN, PHASE DESIGNATION DIAGRAM, EMERGENCY VEHICLE PREEMPTION SEQUENCE, AND SCHEDULE OF QUANTITIES  
IL RTE 19 (IRVING PARK RD) AT SPRINGSGUTH RD

F.A. RTE.	SECTION	COUNTY	TOTAL SHEETS	SHEET NO.
--	2014-008T5	COOK	81	53

CONTRACT NO. 60X83  
ILLINOIS FED. AID PROJECT

FILE NAME	USER NAME	DESIGNED	REVISION
es:\pw_work\p\midot\poc\tech\1\0381174\012314-sh-t-ts2.dgn	poc1echal	IP	IP
		AW / LP	AW / LP
		5/15/2014	5/15/2014

SCALE: SHEET OF SHEETS STA. TO STA.

TS 1965