

STATE OF ILLINOIS
DEPARTMENT OF TRANSPORTATION
DIVISION OF HIGHWAYS
PROPOSED
HIGHWAY PLANS
FAP ROUTE 348: IL 43 (HARLEM AVE.)
FOREST PRESERVE DR. TO ILL 19 (IRVING PARK RD.)
SECTION: 3134-T(14)
DRAINAGE IMPROVEMENT
COOK COUNTY
C-91-368-14

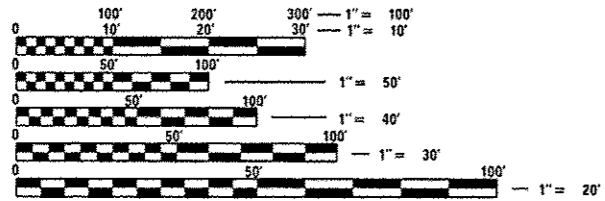
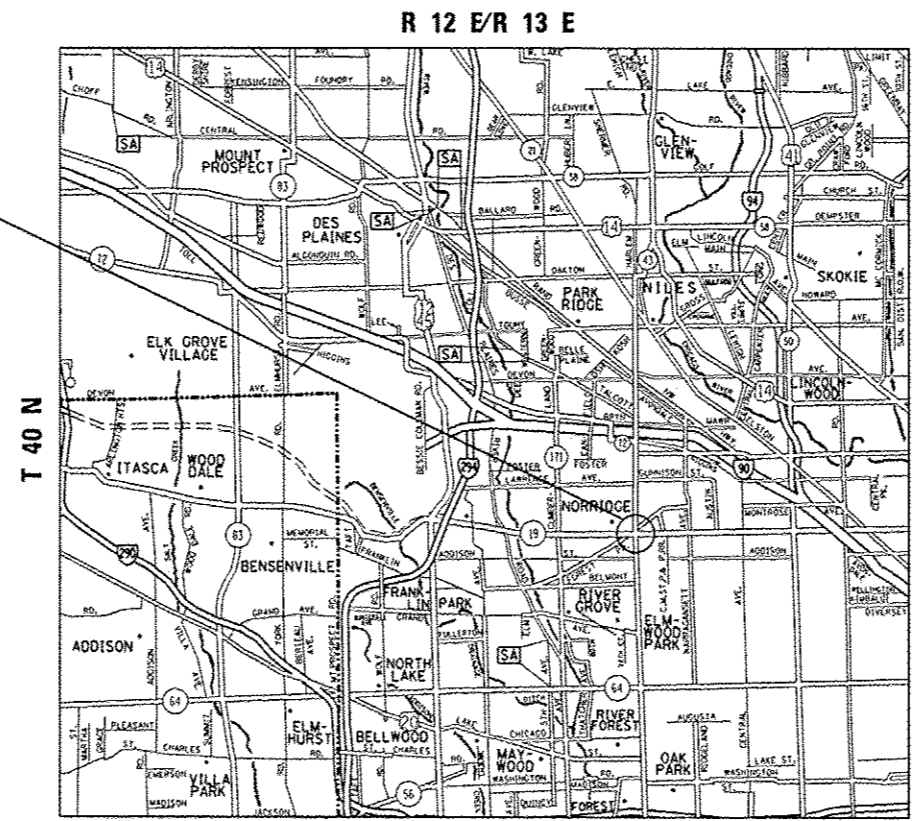
F.A.P. RTE.	SECTION	COUNTY	TOTAL SHEETS	SHEET NO.
348	3134-T(14)	COOK	16	1
		ILLINOIS	CONTRACT NO. 60Y36	

FOR INDEX OF SHEETS, SEE SHEET NO. 2

THIS IMPROVEMENT IS LOCATED IN THE VILLAGES OF NORRIDGE, HARWOOD HEIGHTS AND THE CITY OF CHICAGO



DRAINAGE IMPROVEMENT LOCATION



FULL SIZE PLANS HAVE BEEN PREPARED USING STANDARD ENGINEERING SCALES. REDUCED SIZED PLANS WILL NOT CONFORM TO STANDARD SCALES. IN MAKING MEASUREMENTS ON REDUCED PLANS, THE ABOVE SCALES MAY BE USED.

J.U.L.I.E.
 JOINT UTILITY LOCATION INFORMATION FOR EXCAVATION
 1-800-892-0123
 OR 811

TRAFFIC DATA
 ADT (2011) = 15100
 SPEED LIMIT = 35 MPH

PROJECT ENGINEER: JEAN ALAIN MIDY (847) 221-3056
 PROJECT MANAGER: ISSAM RYAN (847) 705-4178

GROSS AND NET LENGTH OF IMPROVEMENT = 182 LINEAL FEET = .03 MILE

CONTRACT NO. 60Y36

STATE OF ILLINOIS
 DEPARTMENT OF TRANSPORTATION
 DIVISION OF HIGHWAYS

SUBMITTED May 27 20 14
John Fortmann
 DEPUTY DIRECTOR OF HIGHWAYS, REGION ENGINEER

June 27 20 14
John D. Baranzelli, PE
 acting ENGINEER OF DESIGN AND ENVIRONMENT

June 27 20 14
Omer Osman, PE
 DIRECTOR OF HIGHWAYS, CHIEF ENGINEER

**PRINTED BY THE AUTHORITY
 OF THE STATE OF ILLINOIS**

INDEX OF SHEETS

SHEET NO.	DESCRIPTION
1	COVER SHEET
2	INDEX OF SHEETS, STANDARDS, AND GENERAL NOTES
3-4	SUMMARY OF QUANTITIES
5	ALIGNMENT, TIES & BENCHMARKS PLAN
6	EXISTING DRAINAGE PLAN
7	PROPOSED DRAINAGE PLAN
8	OUTLET CONTROL STRUCTURE W/WEIR DETAILS
9	CITY OF CHICAGO DRAINAGE DETAILS (BD-9)
10	CITY OF CHICAGO PC CONCRETE DRIVEWAY, ALLEY RETURN AND SIDEWALK (BD-17)
11	PAVEMENT PATCHING FOR HMA SURFACED PAVEMENT (BD-22)
12	CURB OR CURB AND GUTTER REMOVAL AND REPLACEMENT (BD-24)
13	CITY OF CHICAGO CATCH BASINS, INLET AND MANHOLE DETAILS (BD-47)
14	TRAFFIC CONTROL AND PROTECTION FOR SIDE ROADS, INTERSECTION AND DRIVEWAYS (TC-10)
15	TRAFFIC CONTROL AND PROTECTION AT TURN BAYS (TO REMAIN OPEN TO TRAFFIC) (TC-14)
16	ARTERIAL ROAD INFORMATION SIGN (TC-22)

LIST OF STATE STANDARDS

STANDARD NO.	DESCRIPTION
000001-06	STANDARD SYMBOLS, ABBREVIATIONS AND PATTERNS
280001-07	TEMPORARY EROSION CONTROL SYSTEMS
442201-03	CLASS C AND D PATCHES
602001-02	CATCH BASIN, TYPE A
604001-03	FRAME AND LIDS, TYPE 1
604086-02	FRAME AND GRATE TYPE 23
606001-05	COMBINATION CONCRETE CURB AND GUTTER
701001-02	OFF-ROAD OPERATIONS, 2L, 2W, MORE THAN 4.5 M (15') AWAY FROM PAVEMENT EDGE
701301-04	LANE CLOSURE, 2L, 2W, SHORT TIME OPERATIONS
701311-03	LANE CLOSURE, 2L, 2W, MOVING OPERATIONS - DAY ONLY
701606-04	URBAN LANE CLOSURE, MULTILANE, 2W, WITH MOUNTABLE MEDIAN
701701-09	URBAN LANE CLOSURE, MULTILANE INTERSECTION
701801-05	SIDEWALK CORNER OR CROSSWALK CLOSURE
701901-03	TRAFFIC CONTROL DEVICES

GENERAL NOTES

BEFORE STARTING ANY EXCAVATION, THE CONTRACTOR SHALL CALL "JULIE" AT 800-892-0123 OR 811 FOR FIELD LOCATIONS OF BURIED ELECTRIC, TELEPHONE AND GAS FACILITIES. (48 HOUR NOTIFICATION IS REQUIRED).

THE CONTRACTOR SHALL COORDINATE CONSTRUCTION ACTIVITIES WITH UTILITY COMPANIES AND THE VILLAGES OF NORRIDGE, HARWOOD HEIGHTS AND THE CITY OF CHICAGO

THE CONTRACTOR WILL NOT BE ALLOWED TO SET UP A YARD OR FIELD OFFICE ON STATE PROPERTY WITHOUT WRITTEN PERMISSION FROM THE DEPARTMENT

THE ENGINEER SHALL CONTACT MR. JOE ECKERT AREA TRAFFIC FIELD ENGINEER AT (224) 217-8632 A MINIMUM OF 2 WEEKS PRIOR TO PLACEMENT OF PERMANENT PAVEMENT MARKING.

IT SHALL BE THE CONTRACTOR'S RESPONSIBILITY TO VERIFY ALL DIMENSIONS AND CONDITIONS EXISTING IN THE FIELD PRIOR TO CONSTRUCTION AND ORDERING OF MATERIALS

THE CONTRACTOR SHALL CONTACT THE DISTRICT ONE TRAFFIC CONTROL SUPERVISOR AT (847)705-4470 A MINIMUM OF 72 HOURS IN ADVANCE OF BEGINNING WORK.

THE CONTRACTOR SHALL BE REQUIRED TO PROVIDE ACCESS TO ABUTTING PROPERTY AT ALL TIMES DURING THE CONSTRUCTION OF THIS PROJECT.

TOP OF FRAME ("RIM") ELEVATIONS GIVEN ON THE PLANS ARE ONLY TO ASSIST THE CONTRACTOR IN DETERMINING THE APPROXIMATE OVERALL HEIGHT OF EACH STRUCTURE. FRAMES ON ALL NEW STRUCTURES SHALL BE ADJUSTED TO THE FINAL ELEVATIONS OF THE AREAS IN WHICH THEY ARE LOCATED, AS PART OF THE STRUCTURE COST.

CHICAGO NOTES

BEFORE STARTING ANY EXCAVATION, THE CONTRACTOR SHALL CALL "C.U.A.N" AT 312-744-700 FOR FIELD LOCATIONS OF BURIED ELECTRIC, TELEPHONE AND GAS FACILITIES. (48 HOUR NOTIFICATION IS REQUIRED).

ALL CATCH BASINS IN THE CITY OF CHICAGO MUST MEET THE DEPARTMENT OF SEWERS' STANDARDS.

SEWER SIZES 21" DIAMETER OR SMALLER MUST BE EXTRA-STRENGTH VITRIFIED CLAY PIPE C-700 WITH C-425 JOINTS, OR DUCTILE IRON PIPE WITH PUSH-ON OR MECHANICAL JOINTS. SEWER SIZES 24" DIAMETER OR LARGER MUST BE REINFORCED CONCRETE PIPE TYPE C-76, CLASS III, WALL "B" WITH "O-RING" JOINTS.

PERMITS FROM THE DEPARTMENT OF SEWERS ARE REQUIRED FOR ALL UNDERGROUND STORM, SANITARY OR COMBINED SEWER SYSTEM CONSTRUCTION, AND FOR RESURFACING WORK INVOLVING ADJUSTMENT OF SEWER STRUCTURES. THE DEPARTMENT OF SEWERS' PERMIT MUST BE OBTAINED BY A LICENSED SEWER DRAIN LAYER PRIOR TO START OF CONSTRUCTION.

THE LICENSED SEWER CONTRACTOR/SUB-CONTRACTOR MUST SUBMIT TWO (2) SETS OF PLANS APPROVED BY THE DEPARTMENT OF SEWERS FOR THE ISSUE OF THE SEWER PERMIT IN SUITE 410-333 SOUTH STATE STREET, CHICAGO, IL 60604. INSPECTION WILL BE PROVIDED BY THE DEPARTMENT OF SEWERS.

PERFORATED LIDS SHALL BE PLACED ON ALL MANHOLES AND CATCH BASINS.

THE CONTRACTOR SHALL CONTACT JIM LITTLE TWO WEEKS IN ADVANCE PRIOR TO THE REMOVAL AND INSTALLATION OF THE EXISTING P.A.C.E BUS CANOPY.

ILLINOIS CONVENIENCE AND SAFETY
6624 W. IRVING PARK ROAD
CHICAGO, IL 60634

TEL. 773-545-5296
FAX. 773-545-0298
CELL. 773-255-1032

FILE NAME	USER NAME	DESIGNED	REVISED	STATE OF ILLINOIS DEPARTMENT OF TRANSPORTATION	IL 43 (HARLEM AVE.)		F.A.P. RTE.	SECTION	COUNTY	TOTAL SHEETS	SHEET NO.	
c:\pwworkspace\gullhouse\p\06391037\	36014-shs-rolen.dgn	DRAWN	REVISED		INDEX OF SHEETS, STATE STANDARDS AND GENERAL NOTES		34B	3134-T(14)	COOK	16	2	
	PLOT SCALE - 1/8"=1'-0"	CHECKED	REVISED		SCALE: 1"=50'	SHEET NO. 1 OF 1	SHEETS	STA.	TO STA.	CONTRACT NO. 60Y36		
	PLOT DATE - 6/11/2014	DATE	REVISED		FED. ROAD DIST. NO. ILLINOIS FED. AID PROJECT							

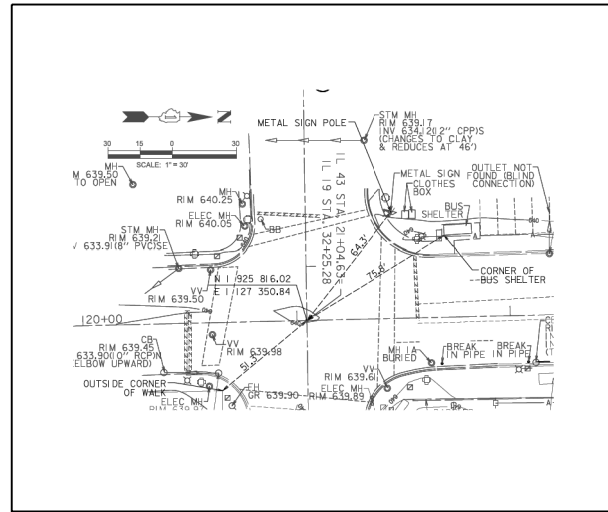
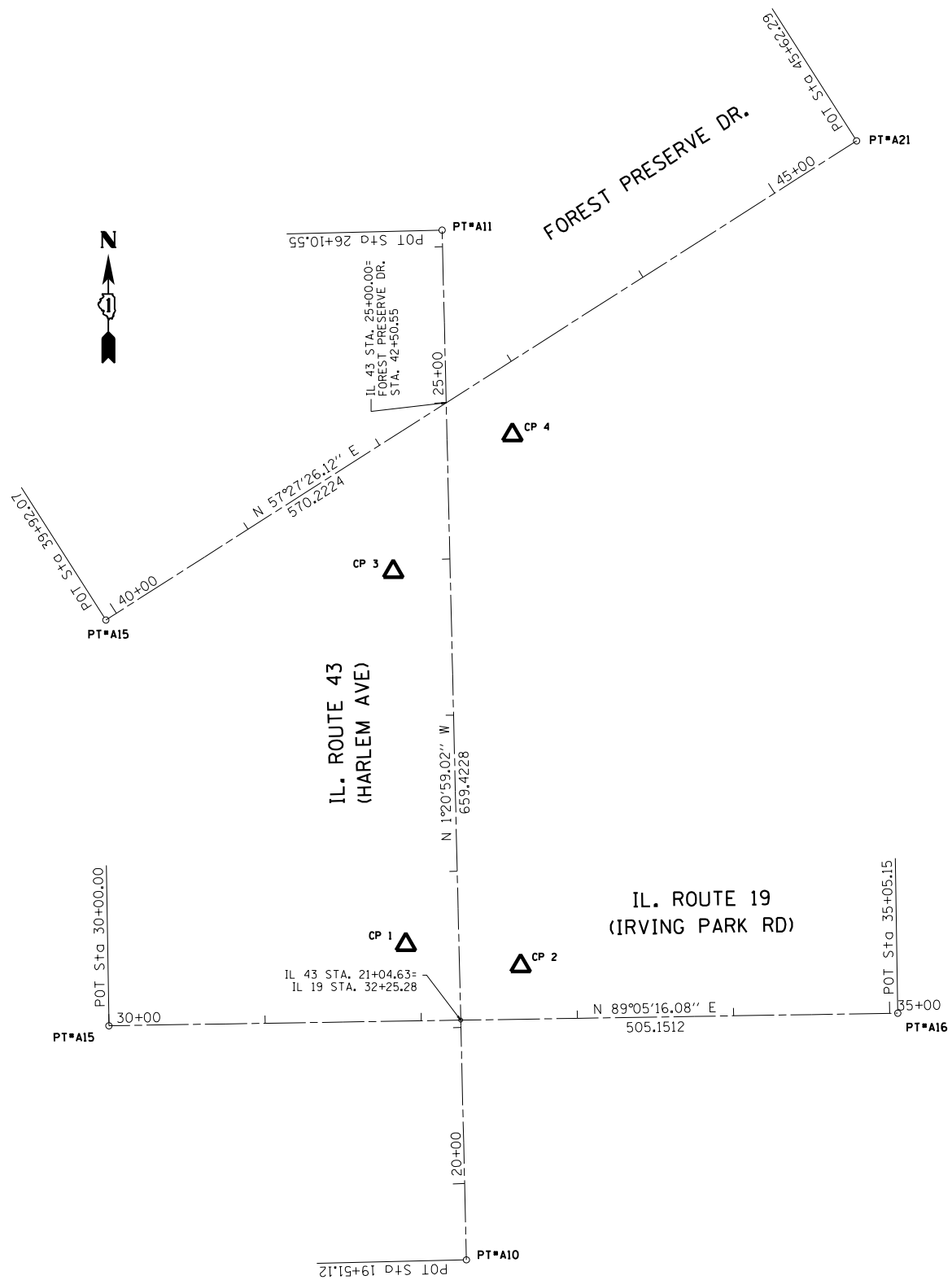
SUMMARY OF QUANTITIES			URBAN 1001. STATE TOTAL QUANTITIES						CONSTRUCTION TYPE CODE					
CODE NO	ITEM	UNIT	0044											
X6022401	MANHOLES, TYPE A, 3'-DIAMETER, SPECIAL, INCLUDING FRAMES AND LIDS	EACH	2	2										
20800150	TRENCH BACKFILL	CU YD	200	200										
21101505	TOPSOIL EXCAVATION AND PLACEMENT	CU YD	370	370										
25000400	NITROGEN FERTILIZER NUTRIENT	POUND	14	14										
25000500	PHOSPHORUS FERTILIZER NUTRIENT	POUND	14	14										
25000600	POTASSIUM FERTILIZER NUTRIENT	POUND	14	14										
25200110	SODDING, SALT TOLERANT	SO YD	740	740										
25200200	SUPPLEMENTAL WATERING	UNIT	7.5	7.5										
28000400	PERIMETER EROSION BARRIER	FOOT	410	410										
28000510	INLET FILTERS	EACH	9	9										
42300400	PORTLAND CEMENT CONCRETE DRIVEWAY PAVEMENT, 8 INCH	SO YD	35	35										
42400200	PORTLAND CEMENT CONCRETE SIDEWALK 5 INCH	SQ FT	1000	1000										
44000200	DRIVEWAY PAVEMENT REMOVAL	SQ YD	35	35										
44000600	SIDEWALK REMOVAL	SQ FT	1000	1000										

SUMMARY OF QUANTITIES			URBAN 1001. STATE TOTAL QUANTITIES						CONSTRUCTION TYPE CODE					
CODE NO	ITEM	UNIT	0044											
44201833	CLASS D PATCHES, TYPE IV, 15 INCH	SO YD	240	240										
550A0340	STORM SEWERS, CLASS A, TYPE 2 12"	FOOT	300	300										
550A0360	STORM SEWERS, CLASS A, TYPE 2 15"	FOOT	25	25										
550A0660	STORM SEWERS, CLASS A, TYPE 3 15"	FOOT	200	200										
550A0780	STORM SEWERS, CLASS A, TYPE 3 48"	FOOT	110	110										
55100200	STORM SEWER REMOVAL 6"	FOOT	50	50										
55100500	STORM SEWER REMOVAL 12"	FOOT	100	100										
60201330	CATCH BASINS, TYPE A, 4'-DIAMETER, TYPE 23 FRAME AND GRATE	EACH	2	2										
60218300	MANHOLES, TYPE A, 4'-DIAMETER, TYPE 1 FRAME, OPEN LID	EACH	2	2										
60224446	MANHOLES, TYPE A, 7'-DIAMETER, TYPE 1 FRAME, CLOSED LID	EACH	1	1										
60256930	MANHOLES TO BE ADJUSTED WITH NEW TYPE 23 FRAME AND GRATE	EACH	1	1										
60500040	REMOVING MANHOLES	EACH	2	2										
60500050	REMOVING CATCH BASINS	EACH	2	2										

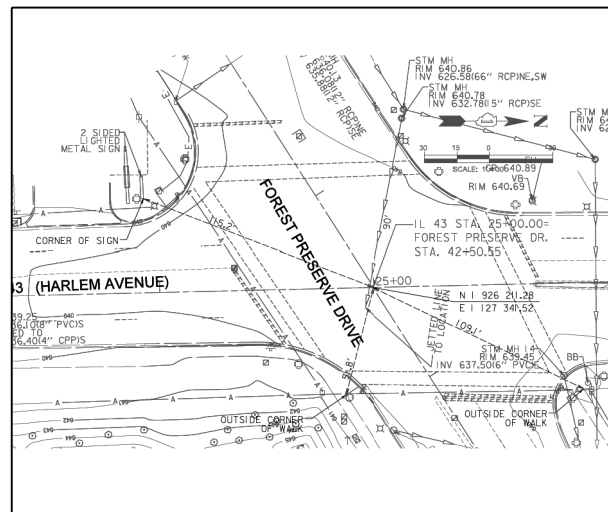
SUMMARY OF QUANTITIES			URBAN 100% STATE TOTAL QUANTITIES	CONSTRUCTION TYPE CODE					SUMMARY OF QUANTITIES			TOTAL QUANTITIES	CONSTRUCTION TYPE CODE					
CODE NO	ITEM	UNIT		0044						CODE NO	ITEM		UNIT	0044				
67100100	MOBILIZATION	L SUM	1	1														
70102625	TRAFFIC CONTROL AND PROTECTION, STANDARD 701606	L SUM	1	1														
70102635	TRAFFIC CONTROL AND PROTECTION, STANDARD 701701	L SUM	1	1														
70102640	TRAFFIC CONTROL AND PROTECTION, STANDARD 701801	L SUM	1	1														
X6020294	MANHOLES, TYPE A, 7' -DIAMETER, TYPE 1 FRAME, CLOSED LID, RESTRICTOR PLATE	EACH	1	1														
Z0004562	COMBINATION CONCRETE CURB AND GUTTER REMOVAL AND REPLACEMENT	FOOT	290	290														
Z0013798	CONSTRUCTION LAYOUT	L SUM	1	1														
Z0018500	DRAINAGE STRUCTURES TO BE CLEANED	EACH	2	2														
Z0030850	TEMPORARY INFORMATION SIGNING	50 FT	51.4	51.4														
* 66900200	NON-SPECIAL WASTE DISPOSAL	CU YD	425	425														
* 66900450	SPECIAL WASTE PLANS AND REPORTS	L SUM	1	1														
* 66900530	SOIL DISPOSAL ANALYSIS	EACH	1	1														
	* Specialty Hems																	

Rev.

FILE NAME :	USER NAME :	DESIGNED :	REVISED :	STATE OF ILLINOIS DEPARTMENT OF TRANSPORTATION	IL 43 (HARLEM AVE.) SUMMARY OF QUANTITIES	F.A.P. RATE:	SECTION:	COUNTY:	TOTAL SHEETS:	SHEET NO.:	
		DRAWN :	REVISED :			348	3134-T1143	COOK	16	4	
		CHECKED :	REVISED :			CONTRACT NO. 60Y36					
		DATE :	REVISED :			SCALE:	SHEET NO. OF SHEETS	STA. TO STA.	ILLINOIS FED. AID PROJECT		



ALIGNMENT TIES



ALIGNMENT TIES

CONTROL POINTS

CP 1	N 1925864.4420	E 1127315.5950
CP 2	N 1926103.2410	E 1127307.6560
CP 3	N 1925850.7370	E 1127389.0920
CP 4	N 1926190.7010	E 1127383.8830

IL. 43	PT# A10	N 1925662.5538	E 1127354.4570	STA. 19+51.12
	PT# A11	N 1926321.7936	E 1127338.9242	STA. 26+10.55
IL. 19	PT# A15	N 1925812.4349	E 1127125.5869	STA. 30+00.00
	PT# A16	N 1925820.4771	E 1127630.6740	STA. 35+05.15
FOREST PRESERVE DR.	PT# A20	N 1926072.2368	E 1127123.6300	STA. 39+92.07
	PT# A21	N 1926378.9756	E 1127604.3220	STA. 45+62.29

BENCHMARKS

SOURCE BENCHMARK:
CITY OF CHICAGO BENCHMARK
BM 228
5.2' WEST OF WEST LINE N. NEVA AVE. AND
9.2' SOUTH OF N. LINE OF BYRON ST.
MARK DESCRIPTION
YEAR BENCHMARK ELEVATION FIXED 1979
ELEV. 63.27

SITE BENCHMARK:
SITE BM1
SCRIBED CROSS CUT ON PAVEMENT AT
THE NORTHEAST CORNER OF IRVING PARK RD.
AND HARLEM AVE.
ELEV. 60.71

SITE BM2
SCRIBED CROSS CUT ON PAVEMENT AT THE
SOUTHEAST CORNER OF HARLEM AVE. AND
FOREST PRESERVE DRIVE.
ELEV. 61.32

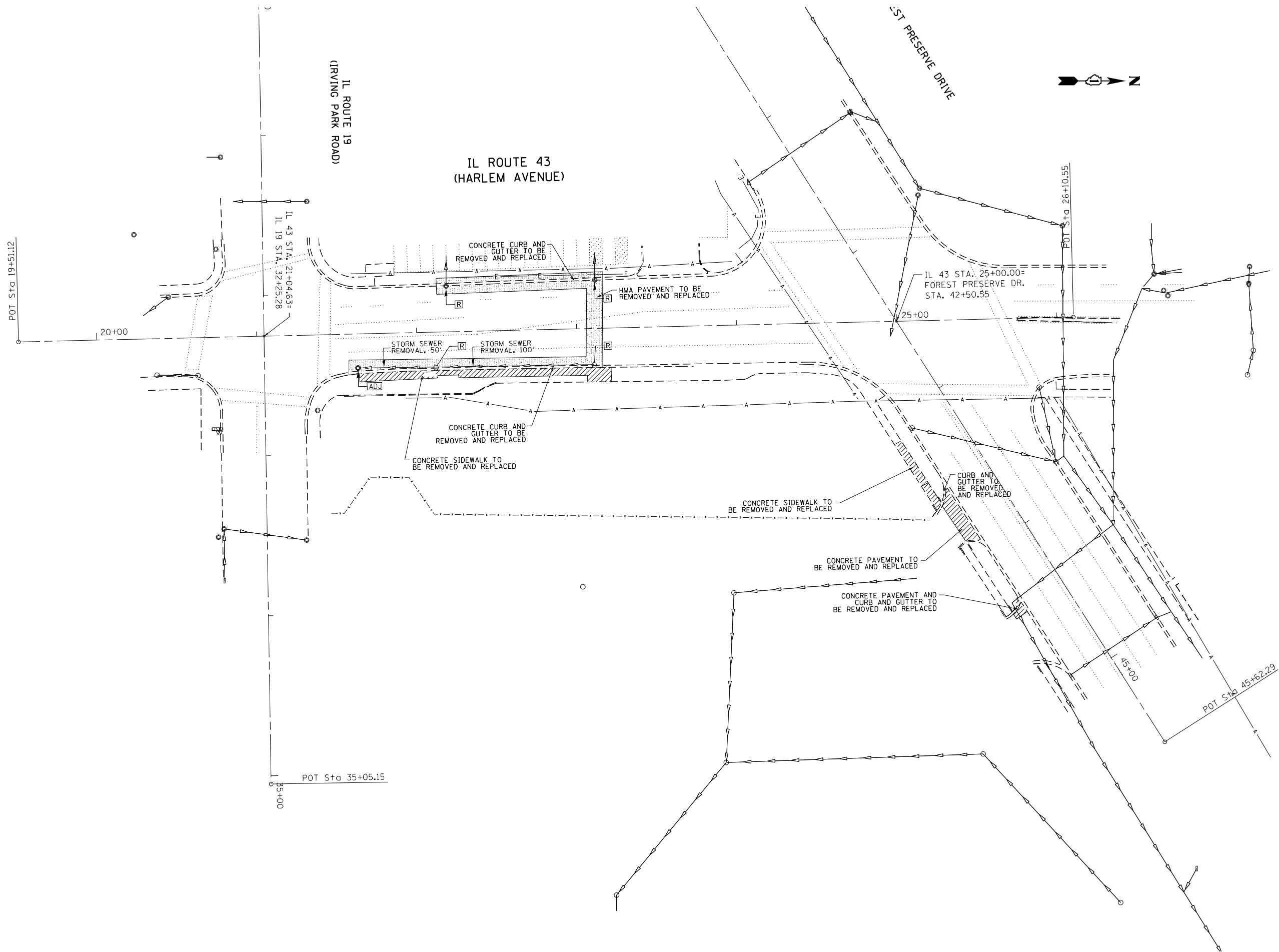
FILE NAME =	USER NAME = guillaumejp	DESIGNED -	REVISED -
et:\pw\work\p\midot\guillaumejp\d0391037\036814-sht.pln.dgn	36814-sht.pln.dgn	DRAWN -	REVISED -
Default	PLOT SCALE = 100.0000' / in.	CHECKED -	REVISED -
	PLOT DATE = 6/4/2014	DATE -	REVISED -

STATE OF ILLINOIS
DEPARTMENT OF TRANSPORTATION

ALIGNMENT AND TIES
IL. ROUTE 43 (HARLEM AVE.) FOREST PRESERVE DR. - IL. RTE. 19

SCALE: 1"=50' SHEET OF SHEETS STA. TO STA.

F.A.P. RTE.	SECTION	COUNTY	TOTAL SHEETS	SHEET NO.
348	3134-T (14)	COOK	16	5
CONTRACT NO. 60Y36				
ILLINOIS FED. AID PROJECT				



FILE NAME =	USER NAME = guillaumefp	DESIGNED -	REVISED -
c:\pwork\work\pwork\guillaumefp\d0391037\036814-sht-plan.dgn		DRAWN -	REVISED -
Default	PLOT SCALE = 60.0000' / in.	CHECKED -	REVISED -
	PLOT DATE = 6/4/2014	DATE -	REVISED -

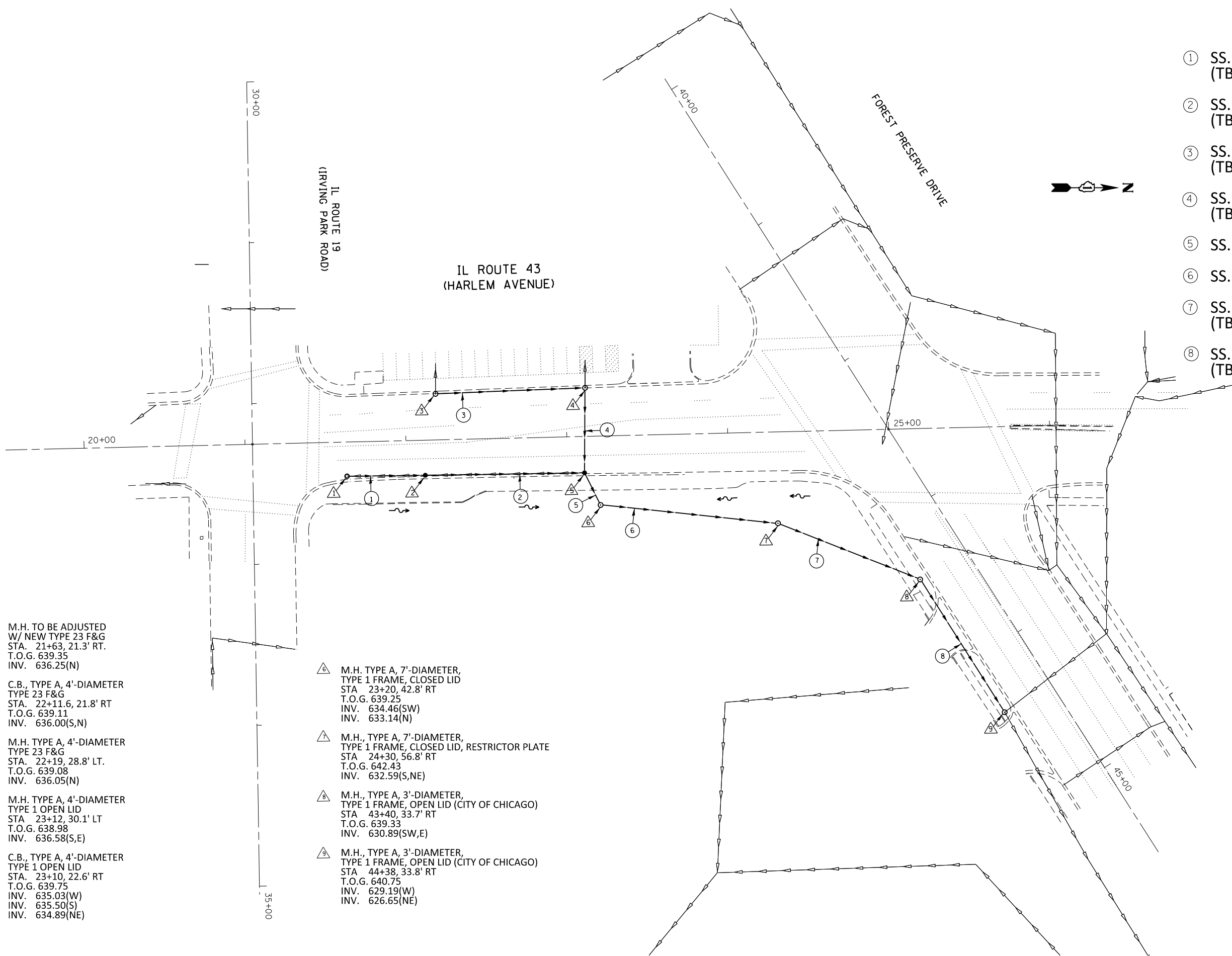
**STATE OF ILLINOIS
DEPARTMENT OF TRANSPORTATION**

**EXISTING REMOVAL PLAN
IL. ROUTE 43 (HARLEM AVE.) FOREST PRESERVE DR. - IL. ROUTE 19**

F.A.P. RTE.	SECTION	COUNTY	TOTAL SHEETS	SHEET NO.
348	3134-T(14)	COOK	16	6
CONTRACT NO. 60Y36				
ILLINOIS FED. AID PROJECT				

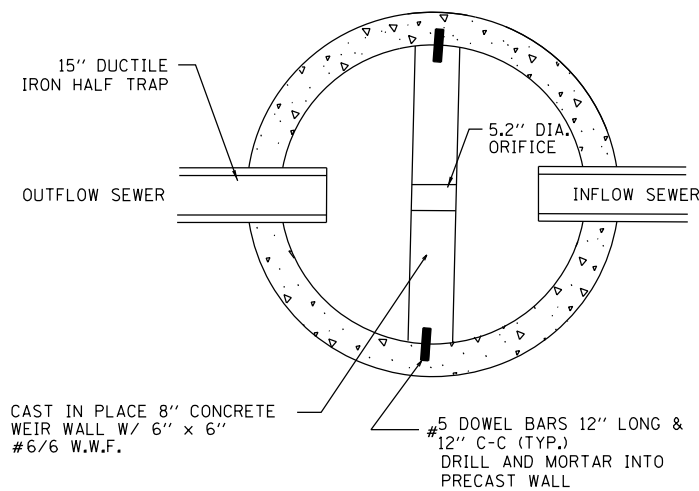
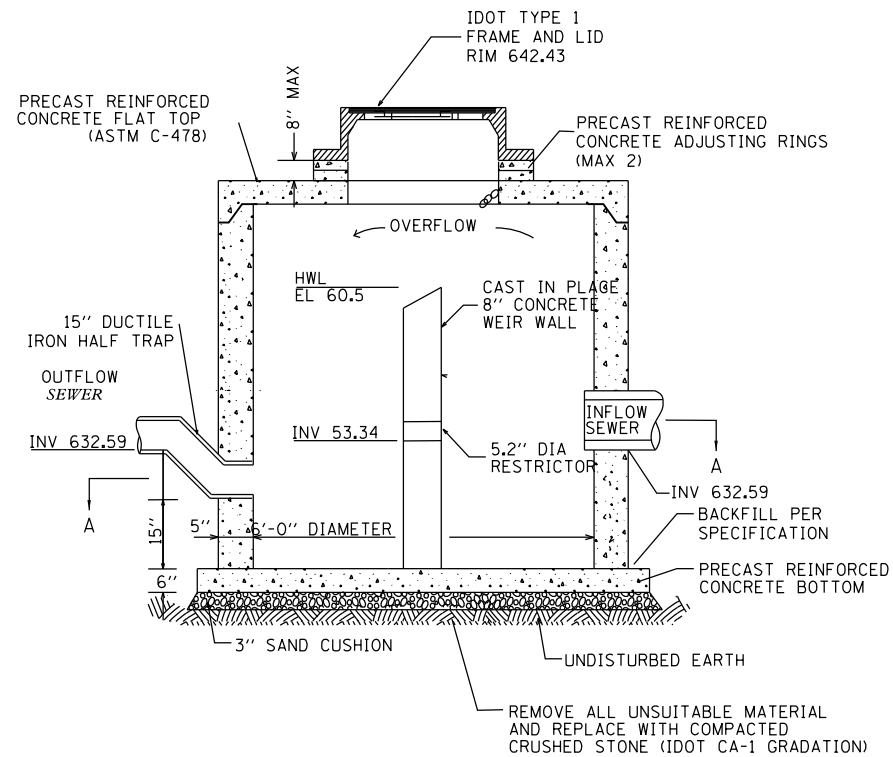
SCALE: 1"=30' SHEET OF SHEETS STA. TO STA.

- ① SS. CLASS A, TYPE 2, 12", 50'
(TB = 6.6 CU YD)
- ② SS. CLASS A, TYPE 2, 12", 100'
(TB = 13.2 CU YD)
- ③ SS. CLASS A, TYPE 2, 12", 95'
(TB = 12.5 CU YD)
- ④ SS. CLASS A, TYPE 2, 12", 55'
(TB = 3.3 CU YD)
- ⑤ SS. CLASS A, TYPE 2, 15", 25'
- ⑥ SS. CLASS A, TYPE 3, 48", 110'
- ⑦ SS. CLASS A, TYPE 3, 15", 100'
(TB = 16.0 CU YD)
- ⑧ SS. CLASS A, TYPE 3, 15", 100'
(TB = 139.6 CU YD)



- ① M.H. TO BE ADJUSTED
W/ NEW TYPE 23 F&G
STA. 21+63, 21.3' RT.
T.O.G. 639.35
INV. 636.25(N)
- ② C.B., TYPE A, 4'-DIAMETER
TYPE 23 F&G
STA. 22+11.6, 21.8' RT
T.O.G. 639.11
INV. 636.00(S,N)
- ③ M.H. TYPE A, 4'-DIAMETER
TYPE 23 F&G
STA. 22+19, 28.8' LT.
T.O.G. 639.08
INV. 636.05(N)
- ④ M.H. TYPE A, 4'-DIAMETER
TYPE 1 OPEN LID
STA. 23+12, 30.1' LT
T.O.G. 638.98
INV. 636.58(S,E)
- ⑤ C.B., TYPE A, 4'-DIAMETER
TYPE 1 OPEN LID
STA. 23+10, 22.6' RT
T.O.G. 639.75
INV. 635.03(W)
INV. 635.50(S)
INV. 634.89(NE)
- ⑥ M.H. TYPE A, 7'-DIAMETER,
TYPE 1 FRAME, CLOSED LID
STA. 23+20, 42.8' RT
T.O.G. 639.25
INV. 634.46(SW)
INV. 633.14(N)
- ⑦ M.H., TYPE A, 7'-DIAMETER,
TYPE 1 FRAME, CLOSED LID, RESTRICTOR PLATE
STA. 24+30, 56.8' RT
T.O.G. 642.43
INV. 632.59(S,NE)
- ⑧ M.H., TYPE A, 3'-DIAMETER,
TYPE 1 FRAME, OPEN LID (CITY OF CHICAGO)
STA. 43+40, 33.7' RT
T.O.G. 639.33
INV. 630.89(SW,E)
- ⑨ M.H., TYPE A, 3'-DIAMETER,
TYPE 1 FRAME, OPEN LID (CITY OF CHICAGO)
STA. 44+38, 33.8' RT
T.O.G. 640.75
INV. 629.19(W)
INV. 626.65(NE)

FILE NAME =	USER NAME = guillaumejp	DESIGNED -	REVISED -	STATE OF ILLINOIS DEPARTMENT OF TRANSPORTATION	PROPOSED DRAINAGE PLAN				F.A.P. RTE.	SECTION	COUNTY	TOTAL SHEETS	SHEET NO.
Default	36814-sht-plan.dgn	DRAWN -	REVISED -		IL. ROUTE 43 (HARLEM AVE.) FOREST PRESERVE DR. - IL. ROUTE 19				348	3134-T(14)	COOK	16	7
	PLOT SCALE = 60.0000' / in.	CHECKED -	REVISED -		SCALE: 1"=30'	SHEET	OF	SHEETS	STA.	TO	STA.	CONTRACT NO. 60Y36	
	PLOT DATE = 6/4/2014	DATE -	REVISED -		ILLINOIS FED. AID PROJECT								



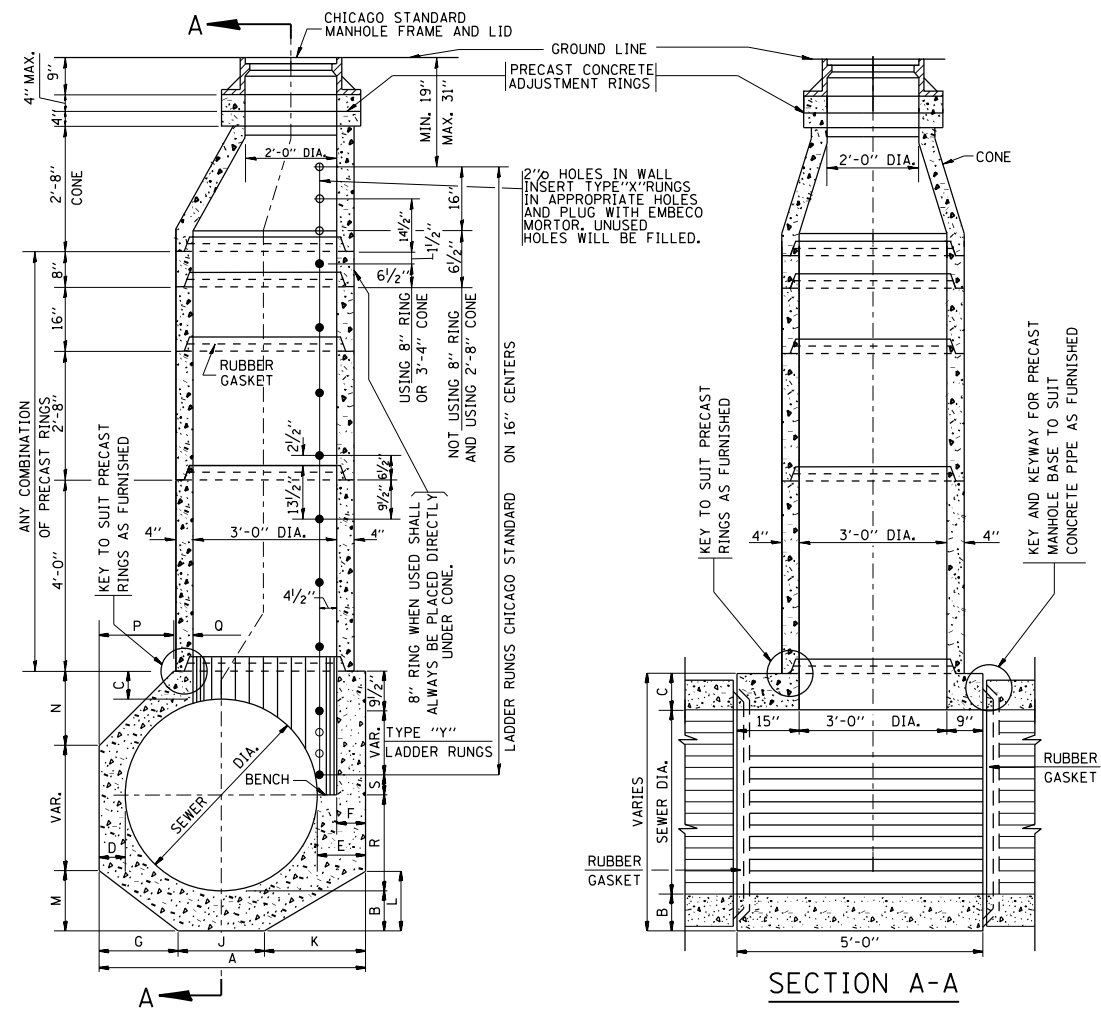
SECTION A-A

**OUTLET CONTROL STRUCTURE
W/WEIR DETAILS**

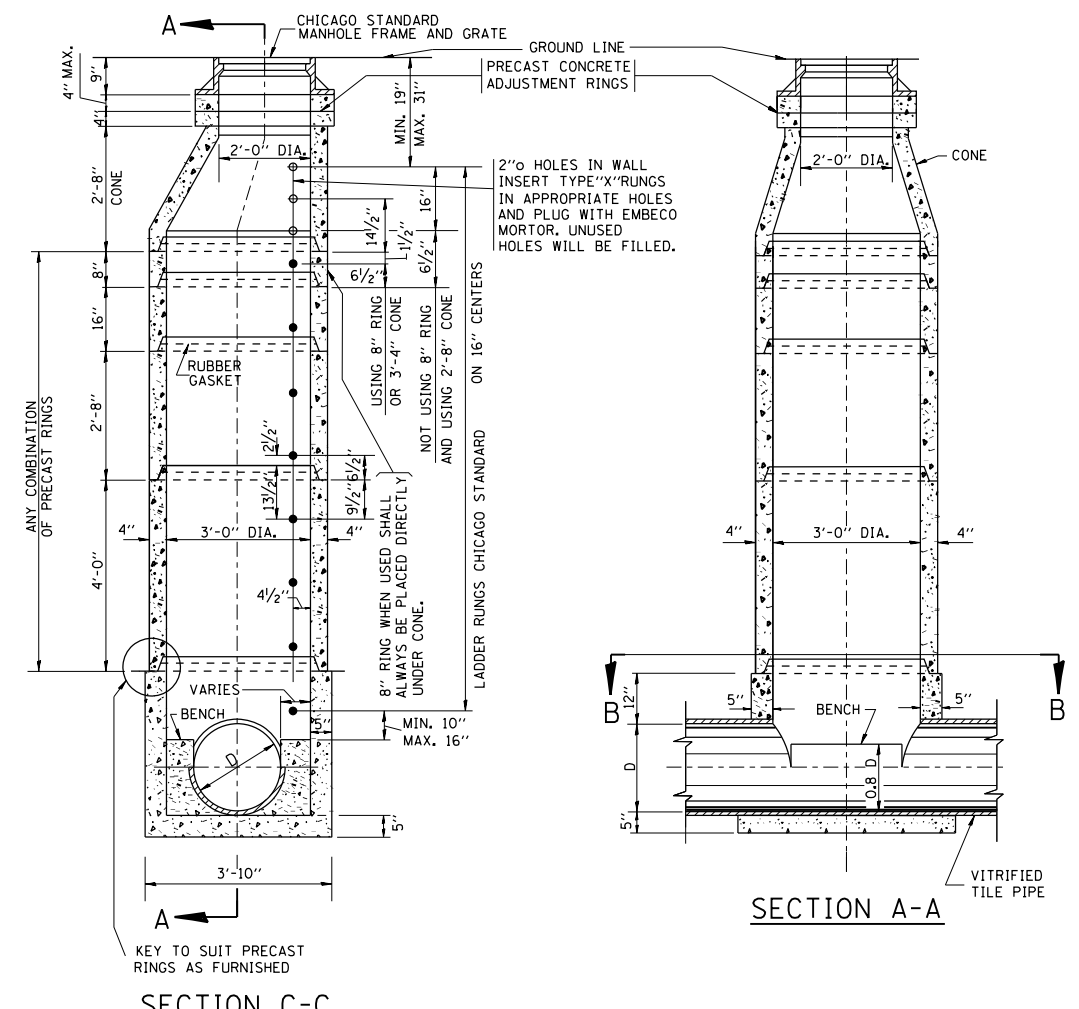
BASIS OF PAYMENT:

THIS WORK WILL BE PAID FOR AT THE CONTRACT UNIT PRICE PER EACH FOR "MANHOLES, TYPE A, 7" -DIAMETER, TYPE 1 FRAME, CLOSED LID, RESTRICTOR PLATE".

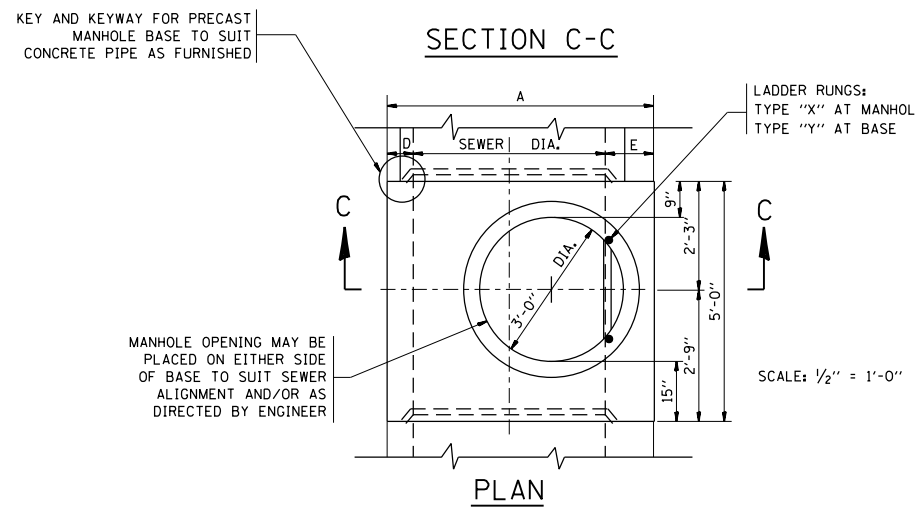
FILE NAME =	USER NAME = guillaumejp	DESIGNED -	REVISED -	STATE OF ILLINOIS DEPARTMENT OF TRANSPORTATION	OUTLET CONTROL STRUCTURE W/WEIR DETAILS				F.A.P. RTE.	SECTION	COUNTY	TOTAL SHEETS	SHEET NO.
et:\pw_work\p\dot\guillaumejp\d0391037\0	36814-sht-plan.dgn	DRAWN -	REVISED -		IL. ROUTE 43 (HARLEM AVE.) FOREST PRESERVE DR. - IL. ROUTE 19				348	3134-T(14)	COOK	16	8
Default	PLOT SCALE = 60.0000' / in.	CHECKED -	REVISED -		SCALE: NONE SHEET OF SHEETS STA. TO STA.				CONTRACT NO. 60Y36				
	PLOT DATE = 6/4/2014	DATE -	REVISED -		ILLINOIS FED. AID PROJECT								



TYPE "A" MANHOLE
FOR SEWERS
24" TO 120" DIAMETER
PRECAST BASES AND RINGS



TYPE "A" MANHOLE
FOR SEWERS
21" DIAMETER AND SMALLER
PRECAST BASES AND RINGS

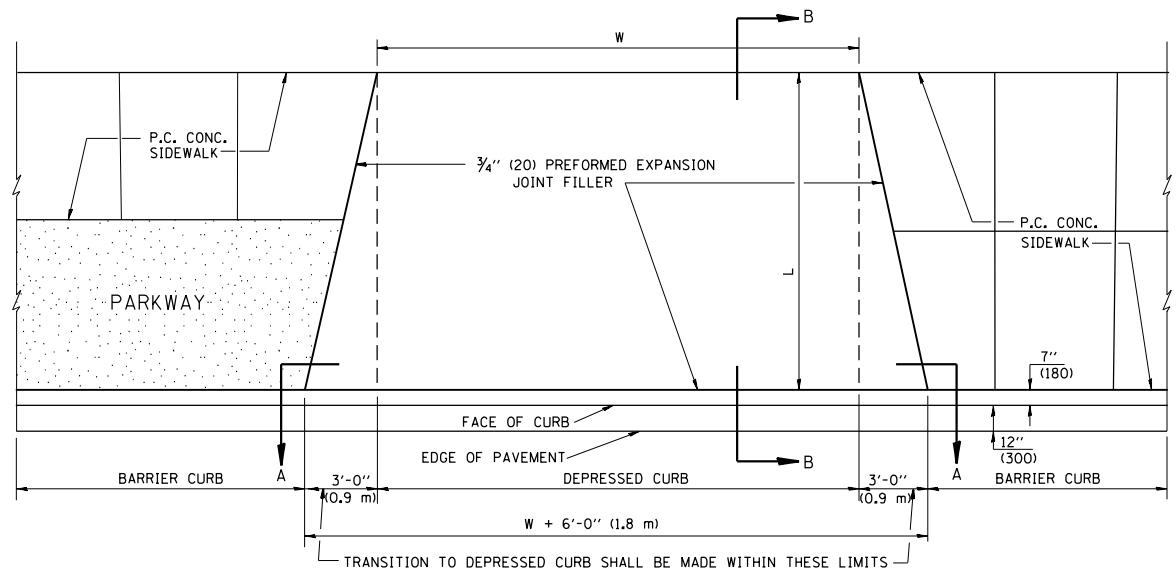


PLAN

SEWER DIA.	PART OF ITEM	DIMENSIONS OF PRECAST MANHOLE BASE																NO. "Y" RINGS
		A	B	C	D	E	F	G	J	K	L	M	N	P	Q	R		
120"		12'-4 1/2"	12"	12"	12"	16 1/2"	12"	4'-0"	4'-0"	4'-4 1/2"	2'-7 1/2"	2'-5"	3'-7"	3'-7"	4'-8 1/2"	2'-0"	2 1/2"	7
108"		11'-4 1/2"	12"	12"	12"	16 1/2"	12"	3'-8"	3'-8"	4'-0 1/2"	2'-5"	2'-2"	3'-4"	3'-4"	4'-0 1/2"	2'-0"	6 1/2"	6
102"		10'-10 1/2"	12"	12"	12"	16 1/2"	12"	3'-6"	3'-6"	3'-10 1/2"	2'-4"	2'-1"	3'-2"	3'-2"	3'-8 1/2"	2'-0"	16 1/2"	5
96"	10-A	10'-2 1/2"	11"	11"	11"	15 1/2"	11"	3'-3"	3'-3"	3'-8 1/2"	2'-3"	23"	2'-11"	2'-11"	3'-4 1/2"	2'-0"	9 1/2"	5
90"	10-B	9'-8 1/2"	11"	11"	11"	15 1/2"	11"	3'-1"	3'-1"	3'-6 1/2"	2'-1 1/2"	22"	2'-10"	2'-10"	2'-11 1/2"	2'-0"	3 1/2"	5
84"	10-C	9'-0 1/2"	10"	10"	10"	14 1/2"	10"	2'-11"	2'-11"	3'-2 1/2"	23"	21"	2'-7"	2'-7"	2'-7 1/2"	2'-0"	12 1/2"	4
78"	10-D	8'-6 1/2"	10"	10"	10"	14 1/2"	10"	2'-9"	2'-9"	3'-0 1/2"	22"	20"	2'-6"	2'-6"	2'-2 1/2"	2'-0"	6 1/2"	4
72"	10	7'-10 1/2"	9"	9"	9"	13 1/2"	9"	2'-6"	2'-6"	2'-10 1/2"	21"	18"	2'-3"	2'-3"	22 1/2"	2'-0"	15 1/2"	3
66"	11	7'-4 1/2"	9"	9"	9"	13 1/2"	9"	2'-4"	2'-4"	2'-8 1/2"	19 1/2"	17"	2'-1"	2'-1"	18 1/2"	2'-0"	9 1/2"	3
60"	12	6'-8 1/2"	8"	8"	8"	12 1/2"	8"	2'-1 1/2"	2'-1 1/2"	2'-6"	18"	15"	23"	23"	13 1/2"	2'-0"	2 1/2"	3
54"	13	6'-2 1/2"	8"	8"	8"	12 1/2"	8"	23 1/2"	23"	2'-4"	17"	14"	21"	21"	9 1/2"	2'-0"	12 1/2"	2
48"	14	5'-6 1/2"	7"	7"	7"	11 1/2"	7"	20 1/2"	21"	2'-1"	15"	12 1/2"	18 1/2"	18 1/2"	5"	2'-0"	5 1/2"	2
42"	15	5'-0 1/2"	7"	7"	7"	11 1/2"	7"	18 1/2"	19"	23"	14"	11"	---	---	17 1/2"	21"	2 1/2"	2
36"	16	4'-4 1/2"	6"	6"	6"	10 1/2"	6"	16"	16"	20 1/2"	12 1/2"	9 1/2"	---	---	10 1/2"	18"	14 1/2"	1
30"	17	4'-0"	6"	6"	6"	12"	6"	14"	14"	20"	12"	8 1/2"	---	---	6"	15"	11 1/2"	1
24"	18	4'-0"	6"	6"	12"	12"	6"	16"	16"	16"	9 1/2"	9 1/2"	---	---	6"	12"	8 1/2"	1

FOR STATE CONTRACT
ALL DIMENSIONS SHOULD
BE PREPARED IN METRIC
UNITS. SOFT CONVERSION
METHOD SHOULD BE USED.

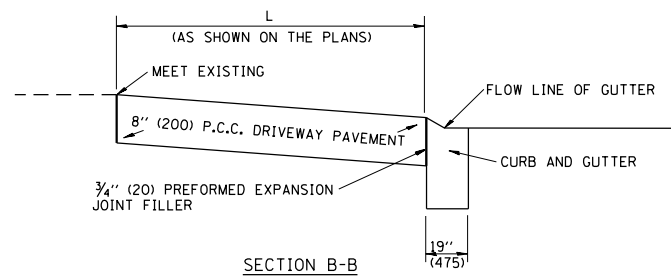
BASIS OF PAYMENT:
THIS WORK WILL BE PAID FOR AT THE CONTRACT UNIT PRICE PER EACH FOR "MANHOLES, TYPE A, 3' DIAMETER, SPECIAL, INCLUDING FRAMES AND LIDS".



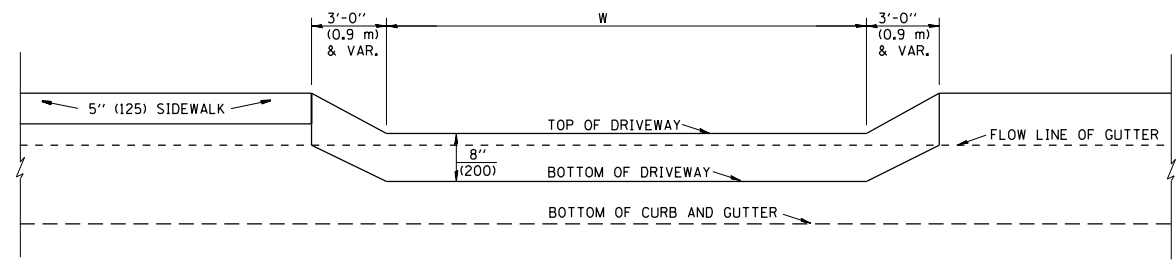
PLAN VIEW

NOTES:

1. EXPANSION JOINTS SHALL BE CONSTRUCTED AS SHOWN ON THE DETAILS FOR P.C.C. SIDEWALK.
2. THE CURB BETWEEN ADJACENT DRIVEWAYS SHALL BE FULL HEIGHT FOR A DISTANCE OF AT LEAST FOUR FEET (1.2 METERS)
3. P.C. CONCRETE DRIVEWAYS SHALL BE CONSTRUCTED AT LOCATIONS SHOWN ON THE PLANS OR AS DIRECTED BY THE ENGINEER.
4. 3/4" (20) PREFORMED EXPANSION JOINTS WILL NOT BE PAID FOR SEPARATELY BUT SHALL BE CONSIDERED INCIDENTAL TO P.C.C. DRIVEWAY PAVEMENT 8" (200).
5. COMBINATION CONC. CURB AND GUTTER SHALL BE MEASURED STRAIGHT ACROSS THE DRIVEWAY. NO ADDITIONAL COMPENSATION WILL BE ALLOWED FOR THE TRANSITION CURB AND GUTTER.

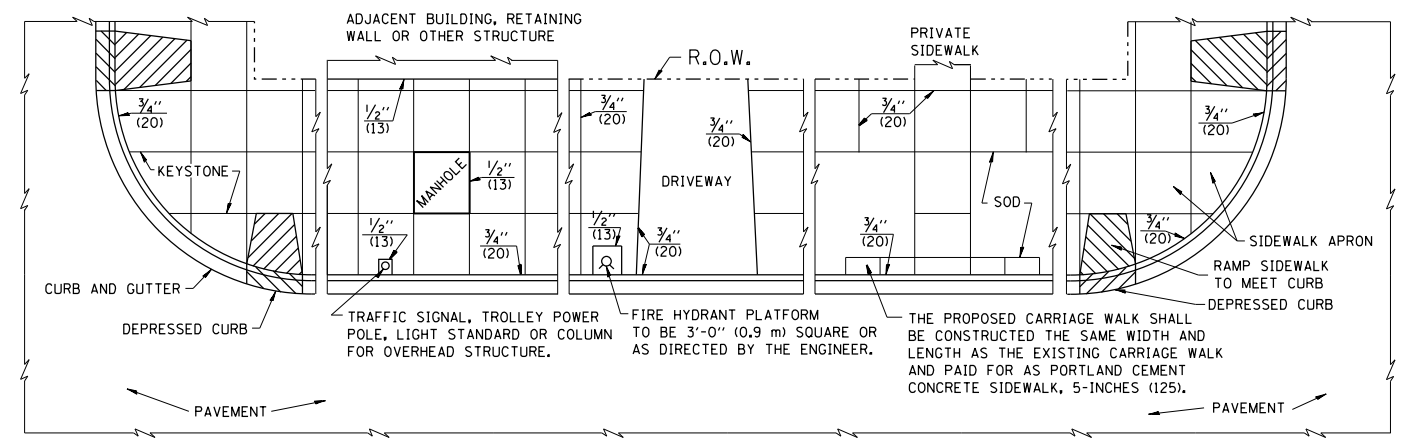


SECTION B-B



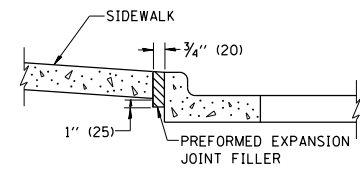
SECTION A-A

P.C.C. DRIVEWAY PAVEMENT DETAIL



NOTES:

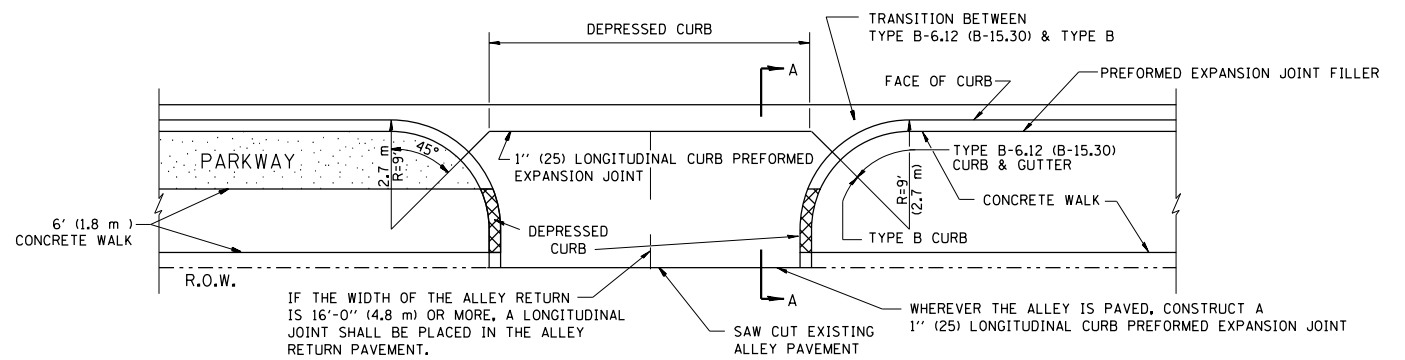
1. ONE-HALF INCH THICK EXPANSION JOINTS SHALL BE PLACED BETWEEN THE SIDEWALK AND ALL STRUCTURES SUCH AS LIGHT STANDARDS, TRAFFIC LIGHT STANDARDS, MANHOLES, WHICH EXTEND THROUGH THE SIDEWALK.
2. 3/4" (20) THICK EXPANSION JOINTS SHALL BE PLACED AT INTERVALS OF NOT MORE THAN 100 FEET (30 METERS) IN THE SIDEWALK, WHERE THE SIDEWALK IS CONSTRUCTED ADJACENT TO PAVEMENT OR CURB HAVING EXPANSION JOINTS, THE EXPANSION JOINTS IN THE SIDEWALK SHALL BE PLACED OPPOSITE THE EXISTING EXPANSION JOINTS AS NEARLY AS PRACTICABLE. EXPANSION JOINTS SHALL ALSO BE PLACED WHERE THE SIDEWALK ABUTS EXISTING SIDEWALKS, BETWEEN DRIVEWAY PAVEMENT AND SIDEWALK, AND BETWEEN SIDEWALK AND CURBS WHERE THE SIDEWALK ABUTS A CURB.



SLOPE FOR SIDEWALK
1" (25) IN 3'-0" (0.9 m) IN CHICAGO

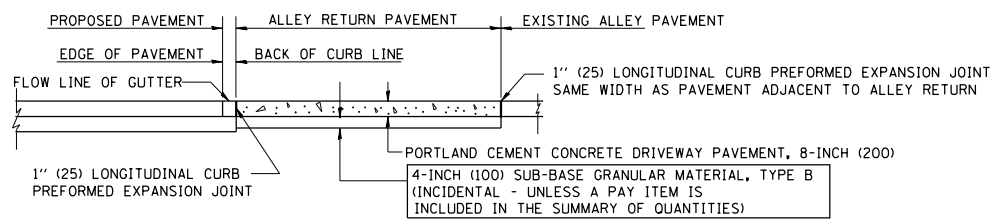
PORTLAND CEMENT CONCRETE SIDEWALK DETAILS

NOTES: NO EXTRA COMPENSATION SHALL BE ALLOWED FOR THE GUTTER FLARE



IF THE WIDTH OF THE ALLEY RETURN IS 16'-0" (4.8 m) OR MORE, A LONGITUDINAL JOINT SHALL BE PLACED IN THE ALLEY RETURN PAVEMENT.

WHEREVER THE ALLEY IS PAVED, CONSTRUCT A 1" (25) LONGITUDINAL CURB PREFORMED EXPANSION JOINT



SECTION A-A

ALLEY RETURN DETAIL

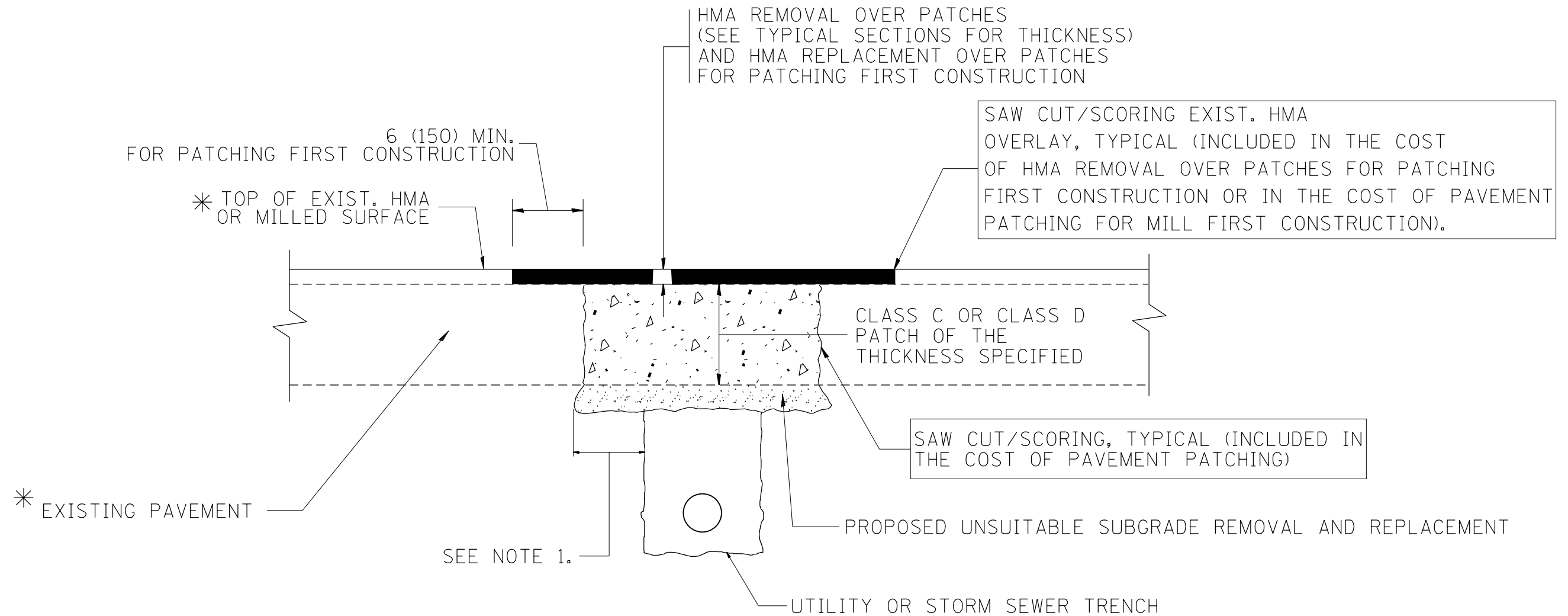
ALL DIMENSIONS ARE IN INCHES (MILLIMETERS) UNLESS OTHERWISE SHOWN

FILE NAME =	USER NAME = guillaumejp	DESIGNED - M. DE YONG	REVISED -
et:\pw\work\p\id\guillaumejp\d0391037\036814-sht-plan.dgn	36814-sht-plan.dgn	DRAWN -	REVISED -
	PLOT SCALE = 100.0000' / 1"	CHECKED -	REVISED -
	PLOT DATE = 6/4/2014	DATE - 06-13-90	REVISED -

STATE OF ILLINOIS
DEPARTMENT OF TRANSPORTATION

CITY OF CHICAGO	
DETAILS FOR P.C. CONCRETE DRIVEWAY, ALLEY RETURN AND SIDEWALK	
SCALE: NONE	SHEET NO. 1 OF 1 SHEETS
STA.	TO STA.

F.A.P. RTE.	SECTION	COUNTY	TOTAL SHEETS	SHEET NO.
348	3134-T(14)	COOK	16	10
BD400-03 (BD-17)		CONTRACT NO. 60Y36		
FED. ROAD DIST. NO. 1 ILLINOIS FED. AID PROJECT				



* SEE TYPICAL SECTIONS FOR THICKNESS AND MATERIALS

NOTES:

1. THE WIDTH OF THE FULL DEPTH PATCH OVER A TRENCH SHALL BE 12 (300) WIDER ON EACH SIDE OF THE TRENCH.
2. FOR METHOD OF MEASUREMENT AND BASIS OF PAYMENT, SEE RECURRING SPECIAL PROVISION "PATCHING WITH HOT-MIX ASPHALT OVERLAY REMOVAL".

SEQUENCE OF CONSTRUCTION (PATCHING FIRST)

1. REMOVE THE EXISTING HMA MATERIAL OVER THE AREA TO BE PATCHED.
2. REMOVE AND REPLACE WITH CLASS C OR D PATCH.
3. REPLACE HMA MATERIAL OVER THE AREA TO BE PATCHED.

SEQUENCE OF CONSTRUCTION (MILLING FIRST)

1. MILL HMA FIRST IF THERE IS AT LEAST 4 1/2 INCHES OR MORE OF HMA MATERIAL ON TOP OF THE EXISTING PAVEMENT OR IF THE PAVEMENT IS FULL DEPTH HMA. A MINIMUM OF 2 INCHES OF HMA MATERIAL SHALL BE IN PLACE AFTER MILLING.
2. REMOVE AND REPLACE WITH FULL DEPTH CLASS D PATCHES TO TOP OF MILLED SURFACE.

ALL DIMENSIONS ARE IN INCHES (MILLIMETERS) UNLESS OTHERWISE SHOWN.

FILE NAME =	USER NAME = guillaumejp	DESIGNED - R. SHAH	REVISED - A. ABBAS 04-27-98
et:\pwork\pwork\guillaumejp\0391037\036814-sht-pln.dgn	36814-sht-pln.dgn	DRAWN -	REVISED - R. BORO 01-01-07
	PLOT SCALE = 100.0000' / in.	CHECKED -	REVISED - R. BORO 09-04-07
	PLOT DATE = 6/4/2014	DATE - 10-25-94	REVISED - K. ENG 10-27-08

**STATE OF ILLINOIS
DEPARTMENT OF TRANSPORTATION**

PAVEMENT PATCHING FOR HMA SURFACED PAVEMENT	
SCALE: NONE	SHEET NO. 1 OF 1 SHEETS STA. TO STA.

F.A.P. RTE.	SECTION	COUNTY	TOTAL SHEETS	SHEET NO.
348	3134-T(14)	COOK	16	11
BD400-04 (BD-22)		CONTRACT NO. 60Y36		
FED. ROAD DIST. NO. 1 ILLINOIS FED. AID PROJECT				

VARIABLE - TO MEET EXISTING DIMENSIONS AND FIELD CONDITIONS (SEE NOTE ②)

PROP. CONC. CURB OR CURB AND GUTTER REPLACEMENT IN ACCORDANCE WITH STATE STANDARD 606001. (SEE NOTE ②)

SAW CUT FULL DEPTH - INCLUDED IN THE COST OF SIDEWALK, DRIVEWAY OR MEDIAN SURFACE REMOVAL PAY ITEM.

SEE STATE STANDARD 606001
EXISTING OR PROPOSED HMA SURFACE (IF APPLICABLE)

18" (450) MAX.

1/4" (5) **

EXISTING SIDEWALK, DRIVEWAY, MEDIAN SURFACE, SOD OR GROUND.

PROPOSED SIDEWALK, DRIVEWAY PAVEMENT, MEDIAN SURFACE OR SODDING SALT TOLERANT WITH TOP SOIL, 4" (100) SOD RESTORATION (SEE NOTE ①).

EXISTING CONCRETE PAVEMENT, CONCRETE BASE COURSE OR FLEXIBLE PAVEMENT

3" (75) MIN.

SUITABLE BACKFILL MATERIAL (INCLUDED IN THE COST OF CURB OR CURB AND GUTTER REMOVAL AND REPLACEMENT)

PROPOSED 3/4" (20) PREFORMED EXPANSION JOINT AT CONCRETE SIDEWALKS, DRIVEWAYS, AND MEDIANS. (INCLUDED IN THE COST OF CURB OR CURB AND GUTTER REMOVAL AND REPLACEMENT.)

* 3" (75) MINIMUM FROM TOP AND BOTTOM OF THE CONCRETE PAVEMENT OR BASE COURSE.

** IF THE FINAL SURFACE OF THE PAVEMENT IS CONCRETE, THE GUTTER IS TO BE FLUSH WITH THE PAVEMENT.

UNSUITABLE SUB-BASE MATERIAL TO BE REMOVED, IF DIRECTED BY THE ENGINEER, SHALL BE REPLACED WITH EITHER SUB-BASE GRANULAR MATERIAL, TYPE B OR ADDITIONAL THICKNESS OF CONCRETE.

REMOVAL AND REPLACEMENT 4" (100) OR LESS IS INCLUDED IN THE COST OF CURB OR CURB AND GUTTER REMOVAL AND REPLACEMENT.

REMOVAL AND REPLACEMENT IN EXCESS OF 4" (100) WILL BE PAID FOR IN ACCORDANCE WITH ARTICLE 109.04 OF THE STANDARD SPECIFICATIONS.

NOTE: ① SIDEWALK, DRIVEWAY PAVEMENT OR MEDIAN SURFACE SHALL BE SIMILAR TO THE MATERIAL BEING REMOVED AND WILL BE PAID FOR SEPARATELY.

SODDING, SALT TOLERANT AND TOP SOIL, FURNISH AND PLACE 4" WILL BE PAID FOR SEPARATELY.

② FERTILIZER FOR THE PLACEMENT OF THE SOD IS NOT REQUIRED

③ CURB OR CURB AND GUTTER REPLACEMENT SHALL MATCH THE SHAPE OF THE EXISTING CURB OR CURB AND GUTTER UNLESS OTHERWISE SPECIFIED.

④ FOR CURB OR CURB AND GUTTER REMOVAL AND REPLACEMENT ADJACENT TO FLEXIBLE PAVEMENT DELETE EPOXY COATED TIE BARS.

⑤ LONGITUDINAL BARS, IF ENCOUNTERED IN THE EXISTING CURB OR CURB AND GUTTER, ARE NOT TO BE REPLACED. CUTTING AND REMOVING LONGITUDINAL BARS SHALL BE INCLUDED IN THE COST OF CURB OR CURB AND GUTTER REMOVAL AND REPLACEMENT.

⑥ THE COST OF HMA SURFACE REMOVAL IN THE EXISTING GUTTER FLAG SHALL BE INCLUDED IN THE COST OF THE CURB AND GUTTER REMOVAL AND REPLACEMENT.

⑦ THE REMOVAL AND REPLACEMENT OF THE EXISTING CURB OR CURB AND GUTTER SHALL BE DONE IN ACCORDANCE WITH THE APPLICABLE PORTIONS OF SECTION 440 AND 606 OF THE STANDARD SPECIFICATIONS.

⑧ THE LOCATIONS OF REMOVAL AND REPLACEMENT OF EXISTING CURB OR CURB AND GUTTER SHALL BE DETERMINED BY THE RESIDENT ENGINEER AT THE TIME OF CONSTRUCTION.

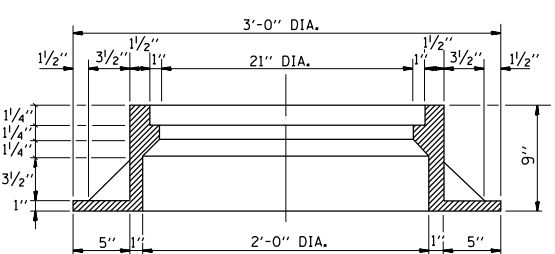
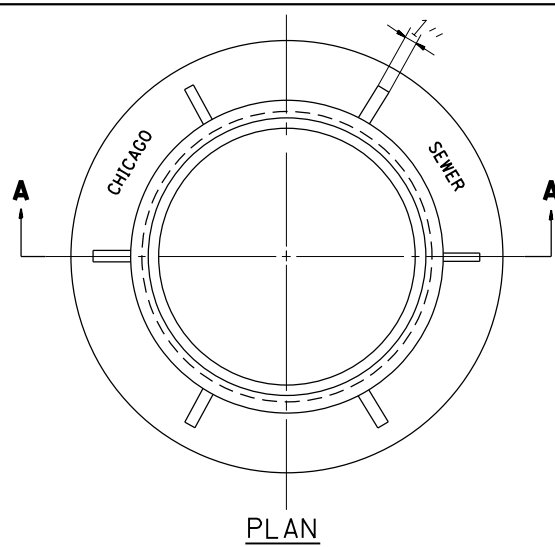
PROPOSED #6 (20) EPOXY COATED TIE BARS 24" (600) LONG AT 24" (600) CENTERS WILL NOT BE PAID FOR SEPARATELY. DELETE EPOXY COATED TIE BARS IF EXISTING TIE BARS ARE USABLE AS DETERMINED BY THE ENGINEER. (SEE NOTE ③).

BASIS OF PAYMENT:
THIS WORK WILL BE PAID FOR AT THE CONTRACT UNIT PRICE PER FOOT (METER) FOR "CURB REMOVAL AND REPLACEMENT" OR "COMBINATION CONCRETE CURB AND GUTTER REMOVAL AND REPLACEMENT".

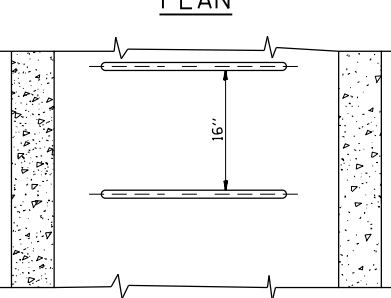
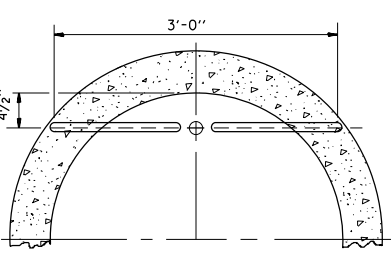
CURB OR CURB AND GUTTER REMOVAL AND REPLACEMENT

ALL DIMENSIONS ARE IN INCHES (MILLIMETERS) UNLESS OTHERWISE SHOWN.

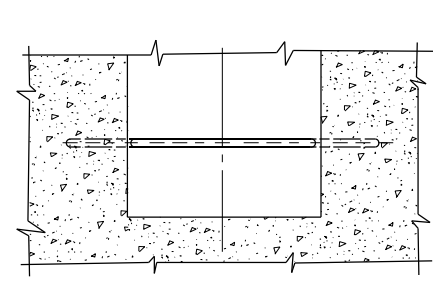
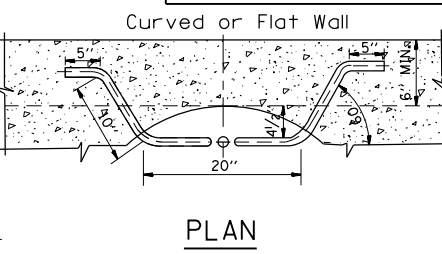
FILE NAME =	USER NAME = guillaumejp	DESIGNED - A. HOUSEH	REVISED - R. SHAH 10-03-96	STATE OF ILLINOIS DEPARTMENT OF TRANSPORTATION	CURB OR CURB AND GUTTER REMOVAL AND REPLACEMENT	F.A.P. RTE.	SECTION	COUNTY	TOTAL SHEETS	SHEET NO.
et:\pw\work\p\id\guillaumejp\d0391037\036814-sht-plan.dgn	36814-sht-plan.dgn	DRAWN -	REVISED - A. ABBAS 03-21-97			348	3134-T(14)	COOK	16	12
PLOT SCALE = 100.0000' / in.	CHECKED -	REVISED - M. GOMEZ 01-22-01	BD600-06 (BD-24)			CONTRACT NO. 60Y36				
PLOT DATE = 6/4/2014	DATE - 03-11-94	REVISED - R. BORO 12-15-09	SCALE: NONE			SHEET NO. 1 OF 1 SHEETS	STA.	TO STA.	FED. ROAD DIST. NO. 1 ILLINOIS FED. AID PROJECT	



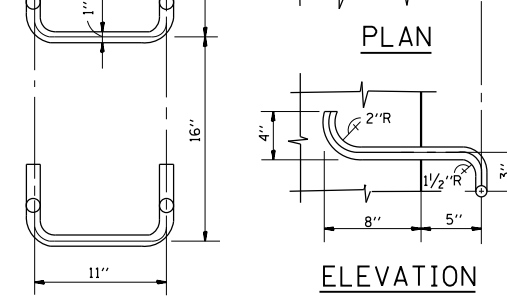
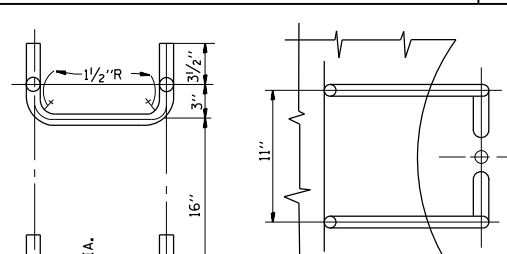
CHICAGO STANDARD MANHOLE FRAME
 SCALE: 1/2"=1'-0"
 MATERIAL: CAST IRON



STANDARD LADDER RUNGS TYPE X
 SCALE: 1"=1'-0"

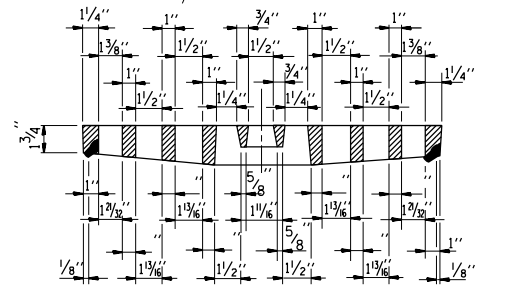
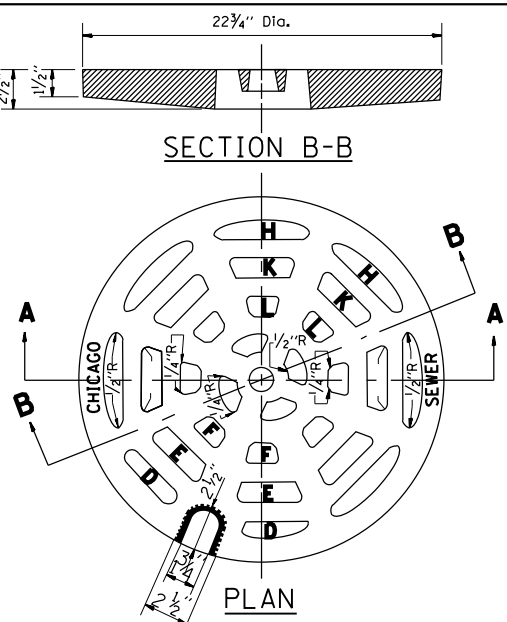


STANDARD LADDER RUNGS TYPE Y
 SCALE: 1"=1'-0"

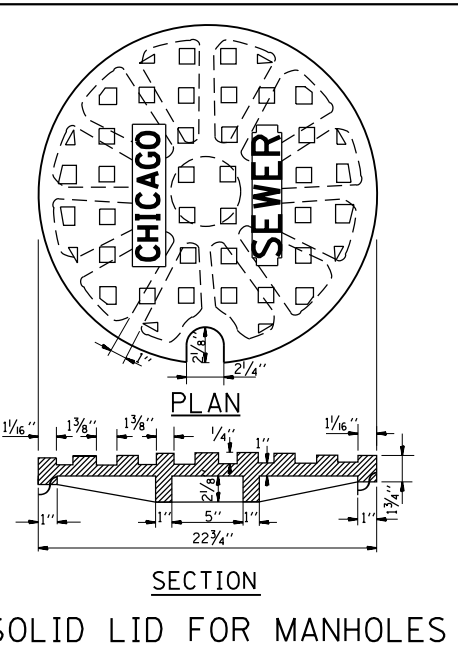
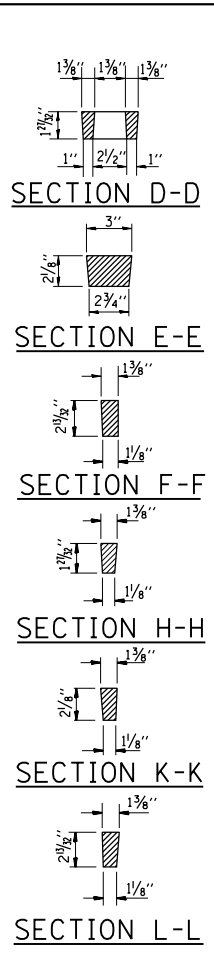


STANDARD LADDER RUNGS HANDHOLD-TYPE Z RUNG
 Scale: 1/2"=1'-0"

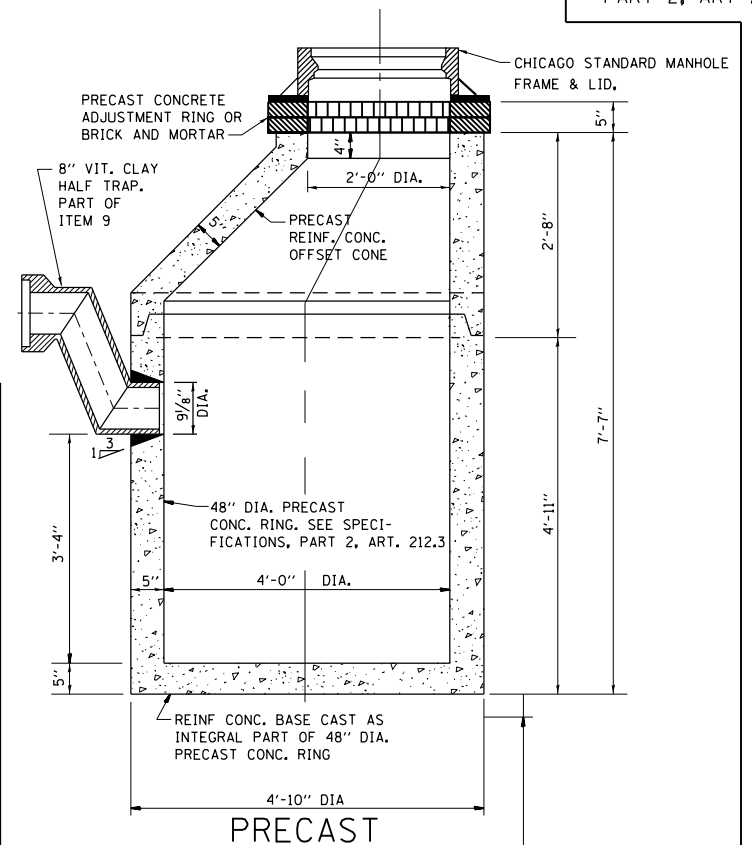
ALL LADDER RUNGS SHALL BE ALUMINUM OR GALVANIZED WROUGHT IRON AS SPECIFIED IN THE SPECIFICATIONS, PART 2, ARTICLE 214.2. RUNGS SHALL BE 1" DIAMETER OR OF A SHAPE HAVING AN EQUIVALENT CROSS-SECTIONAL AREA.



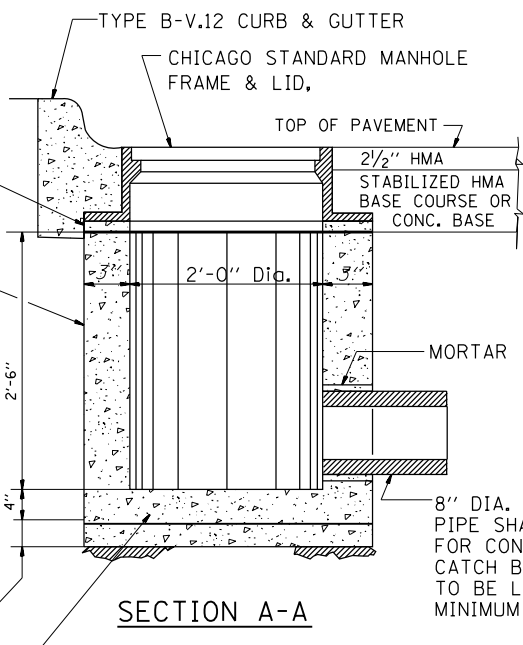
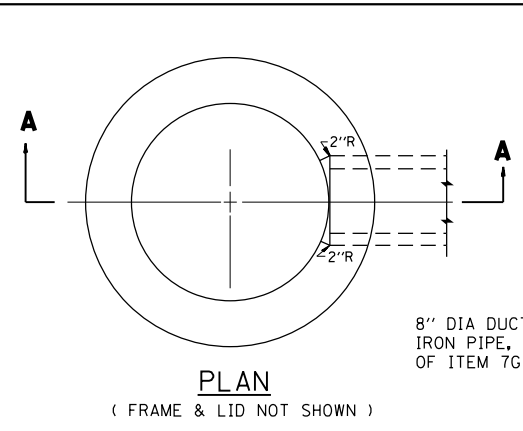
SOLID LID FOR MANHOLES
 SCALE: NONE
 MATERIAL: CAST IRON



SOLID LID FOR MANHOLES
 SCALE: NONE
 MATERIAL: CAST IRON



STANDARD CATCH BASINS
 SCALE: 3/4"=1'-0"
 ITEM 9

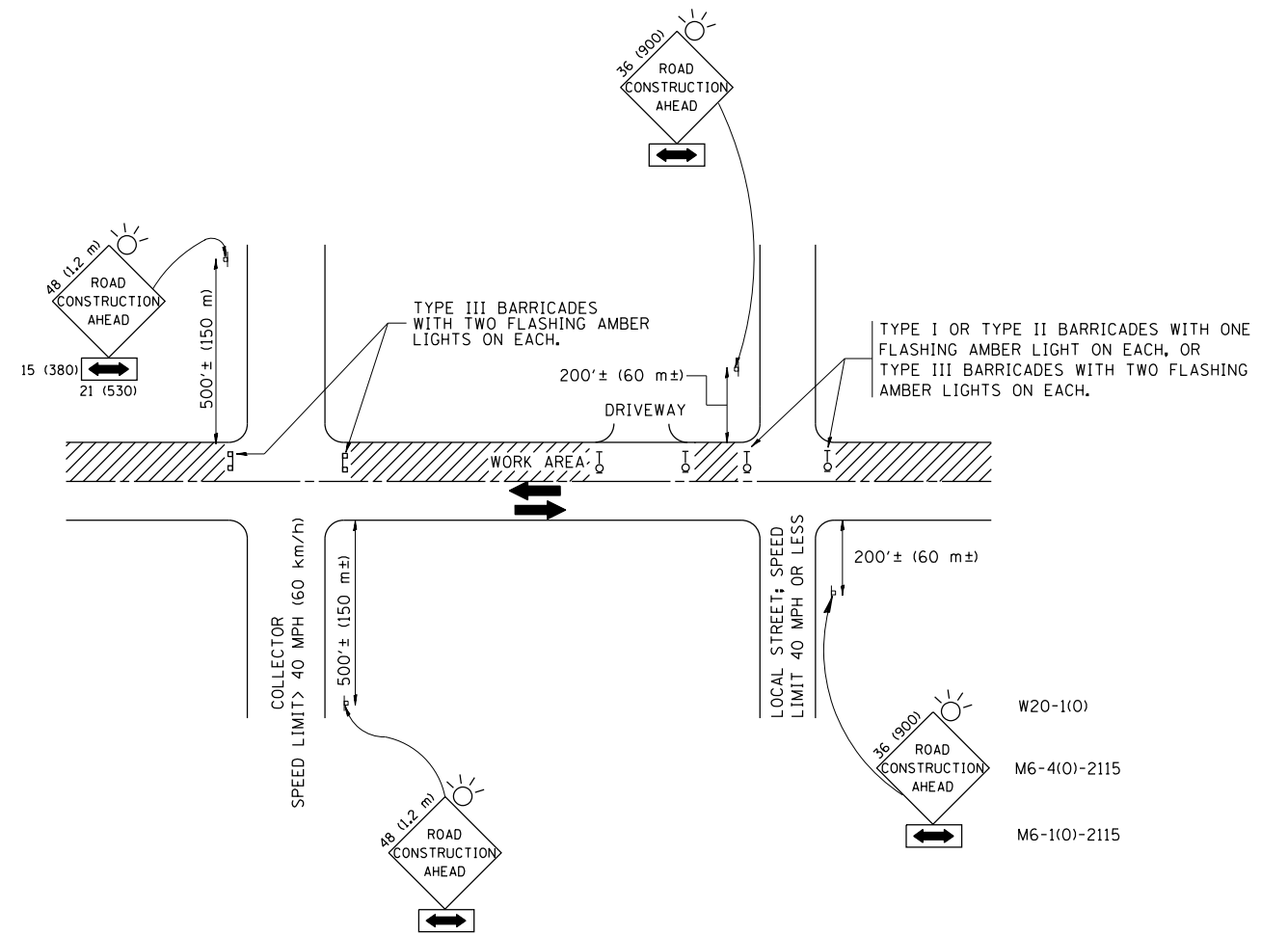


STANDARD INLETS
 SCALE: 1"=1'-0"
 ITEM 12

NOTE: INLETS SHALL NOT BE CONSTRUCTED UNLESS IT IS IMPOSSIBLE TO CONSTRUCT A CATCH BASIN. THE CONTRACTOR SHALL HAVE THE DEPARTMENT OF SEWERS APPROVAL BEFORE CONSTRUCTING INLETS.

CITY OF CHICAGO
 DEPARTMENT OF SEWERS
 ENGINEERING DIVISION

FILE NAME =	USER NAME = guillaumefp	DESIGNED - M. GOMEZ	REVISED -	STATE OF ILLINOIS DEPARTMENT OF TRANSPORTATION	CITY OF CHICAGO CATCH BASIN, INLET AND MANHOLE DETAILS	F.A.P. RFE.	SECTION	COUNTY	TOTAL SHEETS	SHEET NO.
et:\pwork\pwork\guillaumefp\d0391037\036814-sht-plan.dgn	PLOT SCALE = 100.0000' / in.	CHECKED -	REVISED -			348	3134-T(14)	COOK	16	13
PLOT DATE = 6/4/2014	DATE - 01-25-01	REVISED -	REVISED -			BD600-13 (BD47)		CONTRACT NO. 60Y36		FED. ROAD DIST. NO. 1 ILLINOIS FED. AID PROJECT
						SCALE: NONE	SHEET NO. 1 OF 1 SHEETS	STA.	TO STA.	



TRAFFIC CONTROL AND PROTECTION FOR SIDE ROADS, INTERSECTIONS, AND DRIVEWAYS

NOTES:

- A. FOR NO LANE RESTRICTION ON THE SIDE ROAD OR DRIVEWAYS
 1. SIDE ROAD WITH A SPEED LIMIT OF 40 MPH (60 km/h) OR LESS AS SHOWN ON THE DRAWING AND AS DIRECTED BY THE ENGINEER:
 - a) ONE ROAD CONSTRUCTION AHEAD SIGN 36 x 36 (900x900) WITH A FLASHER AND FLAG MOUNTED ON IT APPROXIMATELY 200' (60 m) IN ADVANCE OF THE MAIN ROUTE.
 - b) THE CLOSED PORTION OF THE MAIN ROUTE SHALL BE PROTECTED BY BLOCKING WITH TYPE I, TYPE II OR TYPE III BARRICADES, 1/3 OF THE CROSS SECTION OF THE CLOSED PORTION.
 2. SIDE ROAD WITH A SPEED LIMIT GREATER THAN 40 MPH (60 km/h) AS SHOWN ON THE DRAWING AND AS DIRECTED BY THE ENGINEER:
 - a) ONE ROAD CONSTRUCTION AHEAD SIGN 48 x 48 (1.2 m x 1.2 m) WITH A FLASHER MOUNTED ON IT APPROXIMATELY 500' (150 m) IN ADVANCE OF THE MAIN ROUTE.
 - b) THE CLOSED PORTION OF THE MAIN ROUTE SHALL BE PROTECTED BY BLOCKING WITH TYPE III BARRICADES, 1/2 OF THE CROSS SECTION OF THE CLOSED PORTION.
 3. WHEN THE SIDE ROAD LIES BETWEEN THE BEGINNING OF THE MAINLINE SIGNING AND THE WORK ZONE, A SINGLE HEADED ARROW (M6-1) SHALL BE USED IN LIEU OF THE DOUBLE HEADED ARROW (M6-4).
- B. FOR A LANE CLOSURE ON A SIDE ROAD OR DRIVEWAY:

USE APPLICABLE PORTIONS OF THE TYPICAL APPLICATION OF TRAFFIC CONTROL DEVICES (STD. 701501, STD. 701606 OR THE APPROPRIATE STANDARD). THE SPACING OF SIGNS AND BARRICADES SHALL BE ADJUSTED FOR FIELD CONDITIONS AS DIRECTED BY THE ENGINEER. THE DIRECTIONAL ARROW SHALL BE COVERED OR REMOVED WHEN NO LONGER CONSISTENT WITH THE SIDE ROAD LANE CLOSURE.

 - C. ADVANCE WARNING SIGNS ARE TO BE OMITTED ON DRIVEWAY UNLESS OTHERWISE NOTED.
 - D. THE TRAFFIC CONTROL AND PROTECTION FOR SIDE ROADS, INTERSECTIONS, AND DRIVEWAYS SHALL BE INCIDENTAL TO THE COST OF SPECIFIED TRAFFIC CONTROL STANDARDS OR ITEMS.

All dimensions are in millimeters (inches) unless otherwise shown.

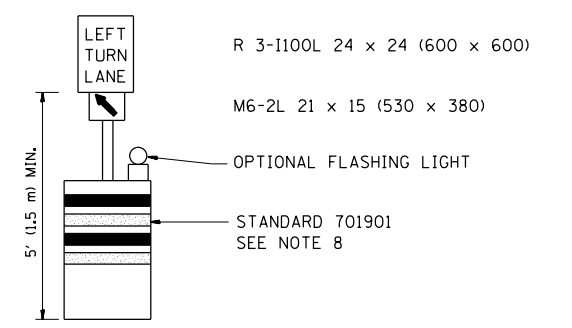
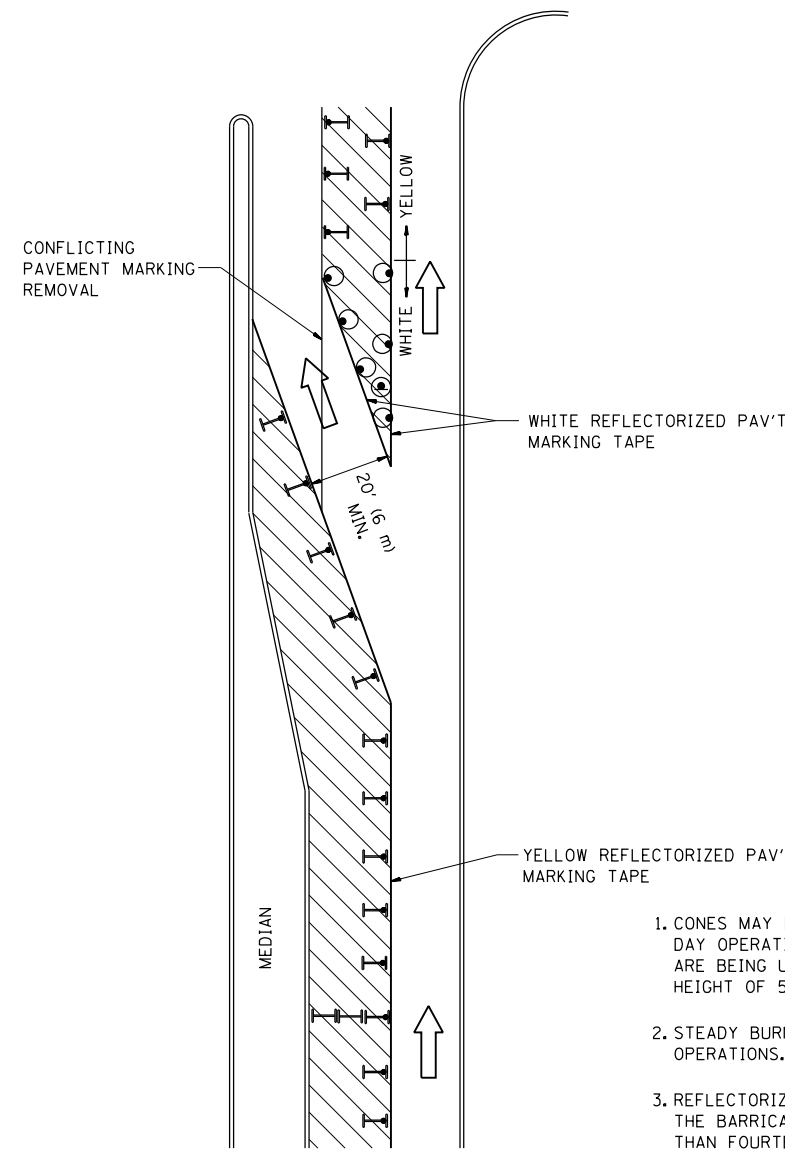
FILE NAME =	USER NAME = guillaumejp	DESIGNED - LHA	REVISED - J. OBERLE 10-18-95
et:\pwork\pwork\guillaumejp\d0391037\036814-sht-plan.dgn	36814-sht-plan.dgn	DRAWN -	REVISED - A. HOUSEH 03-06-96
	PLOT SCALE = 100.0000' / in.	CHECKED -	REVISED - A. HOUSEH 10-15-96
	PLOT DATE = 6/4/2014	DATE - 06-89	REVISED - T. RAMMACH 01-06-00

STATE OF ILLINOIS
DEPARTMENT OF TRANSPORTATION

TRAFFIC CONTROL AND PROTECTION FOR
SIDE ROADS, INTERSECTIONS, AND DRIVEWAYS

SCALE: NONE SHEET NO. 1 OF 1 SHEETS STA. TO STA.

F.A.P. RTE.	SECTION	COUNTY	TOTAL SHEETS	SHEET NO.
348	3134-T(14)	COOK	16	14
TC-10			CONTRACT NO. 60Y36	
FED. ROAD DIST. NO. 1 ILLINOIS FED. AID PROJECT				

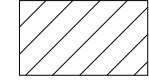
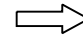
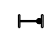


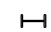


GENERAL NOTES

1. CONES MAY BE SUBSTITUTED FOR BARRICADES OR DRUMS AT HALF THE SPACING DURING DAY OPERATIONS. CONES SHALL BE A MINIMUM OF 28 (710) IN HEIGHT. WHEN CONES ARE BEING USED, THE "LEFT TURN LANE" SIGN MAY BE SKID MOUNTED AT A MINIMUM HEIGHT OF 5' (1.5 m).
2. STEADY BURNING LIGHTS WILL NOT BE REQUIRED ON BARRICADES OR DRUMS FOR DAY OPERATIONS. ALL LIGHTS SHALL BE MONODIRECTIONAL.
3. REFLECTORIZED TEMPORARY PAVEMENT MARKING TAPE SHALL BE PLACED THROUGHOUT THE BARRICADED AREA OF EACH TURN BAY WHERE THE CLOSURE TIME IS GREATER THAN FOURTEEN DAYS.
4. THIS APPLICATION ALSO APPLIES WHEN WORK IS BEING PERFORMED IN THE RIGHT LANE(S) AND THE RIGHT TURN BAY IS TO REMAIN OPEN. UNDER THIS CONDITION, "RIGHT TURN LANE" R3-100 24 x 24 (600 x 600) AND M6-2R 21 x 15 (530 x 380) SHALL BE USED.
5. THESE CONTROLS SHALL SUPPLEMENT MAINLINE TRAFFIC CONTROL FOR LANE CLOSURES.
6. LONGITUDINAL DIMENSIONS MAY BE ADJUSTED TO FIT FIELD CONDITIONS.
7. FORM OPER 725 IS REQUIRED.
8. IF A DRUM OR TYPE II BARRICADE WITH AN ATTACHED SIGN PANEL WHICH MEETS NCHRP 350 REQUIREMENTS IS NOT AVAILABLE, THE SIGNS SHALL BE MOUNTED, ABOVE THE BARRICADES, ON SEPARATE SIGNS SUPPORTS THAT MEET NCHRP 350 PREQUIREMENTS.
9. TRAFFIC CONTROL AND PROTECTION AT TURN BAYS (TO REMAIN OPEN TO TRAFFIC) SHALL BE INCLUDED IN THE COST SPECIFIED TRAFFIC CONTROL STANDARDS OR ITEMS.

All dimensions are in inches (millimeters) unless otherwise shown.

LEGEND

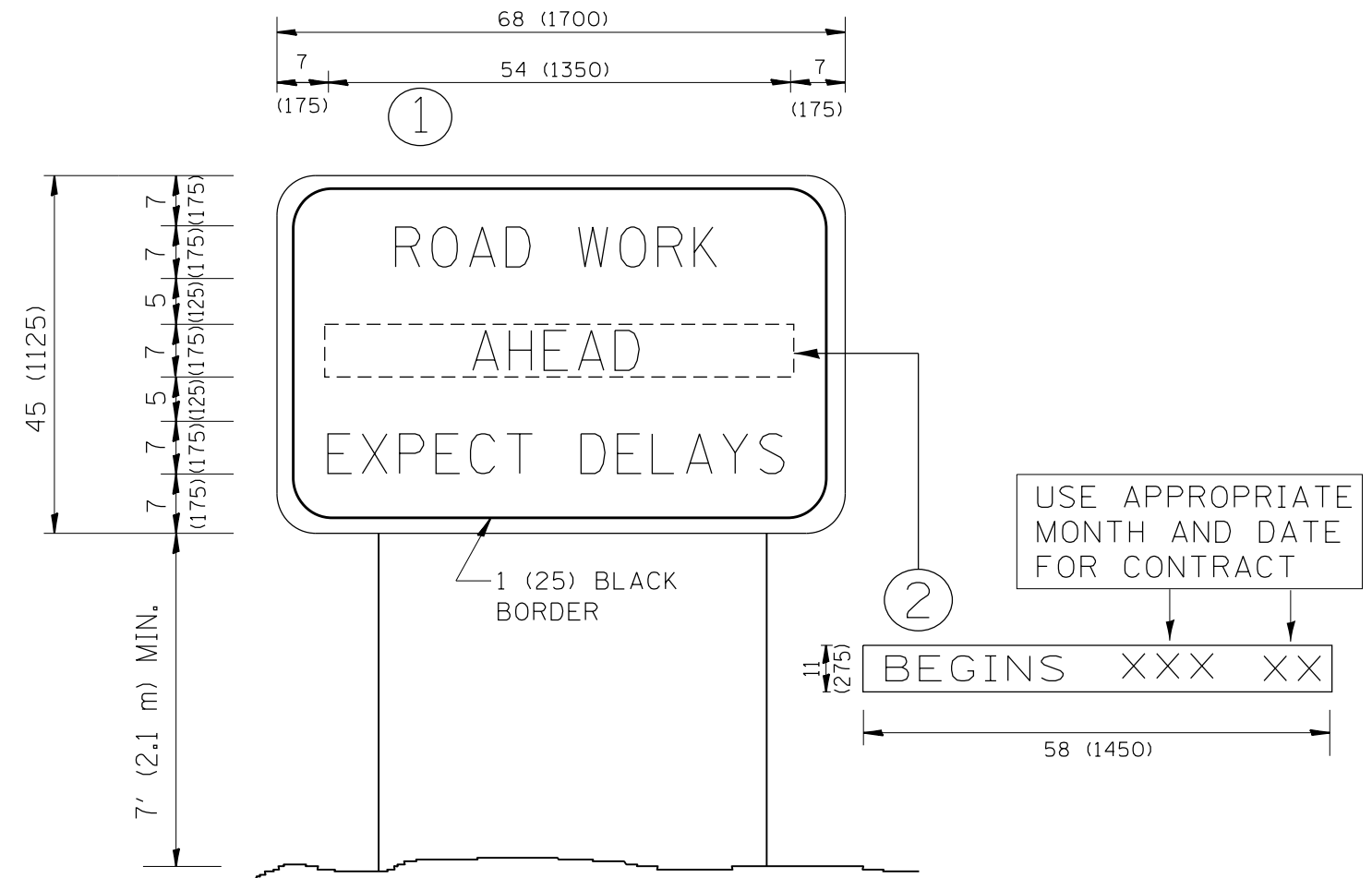
-  WORK AREA
-  LANE OPEN TO TRAFFIC
-  TYPE I OR II BARRICADE WITH STEADY BURN LIGHT
-  DRUM WITH STEADY BURN LIGHT
-  DRUM WITH SIGN (WITH OPTIONAL FLASHING LIGHT) SEE DETAIL
-  TYPE I OR II CHECK BARRICADE WITH FLASHING LIGHT

FILE NAME =	USER NAME = guillaumefp	REVISED -T, RAMMACHER 09-08-94	REVISED - R, BORO 09-14-09
et:\pw\work\p1dot\guillaumefp\d0391037\0	36814-sht.pln.dgn	REVISED - A. HOUSEH 11-07-95	REVISED -
	PLOT SCALE = 100.0000' / in.	REVISED - A. HOUSEH 10-12-96	REVISED -
	PLOT DATE = 6/4/2014	REVISED -T, RAMMACHER 01-06-00	REVISED -

**STATE OF ILLINOIS
DEPARTMENT OF TRANSPORTATION**

TRAFFIC CONTROL AND PROTECTION AT TURN BAYS (TO REMAIN OPEN TO TRAFFIC)			
SCALE: NONE	SHEET NO. 1 OF 1 SHEETS	STA.	TO STA.

F.A.P. RTE.	SECTION	COUNTY	TOTAL SHEETS	SHEET NO.
348	3134-T(14)	COOK	16	15
TC-14		CONTRACT NO. 60Y36		
FED. ROAD DIST. NO. 1 ILLINOIS FED. AID PROJECT				



NOTES:

1. USE BLACK LETTERING ON ORANGE BACKGROUND.
2. ERECT SIGNS IN ADVANCE OF THE LOCATION FOR THE "ROAD CONSTRUCTION AHEAD" SIGN AT LOCATIONS AS DIRECTED BY THE ENGINEER.
3. ERECT SIGN ① WITH INSTALLED PANEL ② ONE WEEK PRIOR TO THE START OF CONSTRUCTION.
4. REMOVE PANEL ② SOON AFTER THE START OF CONSTRUCTION.
5. SEE SPECIAL PROVISION FOR "TEMPORARY INFORMATION SIGNING" FOR ADDITIONAL INFORMATION.
6. ONE SIGN ASSEMBLY EQUALS 25.70 SQ. FT. (2.3 SQ. M.)
7. SHALL BE PAID FOR AS TEMPORARY INFORMATION SIGNING.

ALL DIMENSIONS ARE IN INCHES (MILLIMETERS) UNLESS OTHERWISE SHOWN.

FILE NAME =	USER NAME = guillaumejp	DESIGNED -	REVISED - R. MIRS 09-15-97
et:\pwork\pwork\guillaumejp\d0391037\036814-sht-plan.dgn		DRAWN -	REVISED - R. MIRS 12-11-97
	PLOT SCALE = 100.0000' / in.	CHECKED -	REVISED - T. RAMMACHER 02-02-99
	PLOT DATE = 6/4/2014	DATE -	REVISED - C. JUCIUS 01-31-07

**STATE OF ILLINOIS
DEPARTMENT OF TRANSPORTATION**

**ARTERIAL ROAD
INFORMATION SIGN**

SCALE: NONE SHEET NO. 1 OF 1 SHEETS STA. TO STA.

F.A.P. RTE.	SECTION	COUNTY	TOTAL SHEETS	SHEET NO.
348	3134-T(14)	COOK	16	16
TC-22			CONTRACT NO. 60Y36	
FED. ROAD DIST. NO. 1 ILLINOIS FED. AID PROJECT				