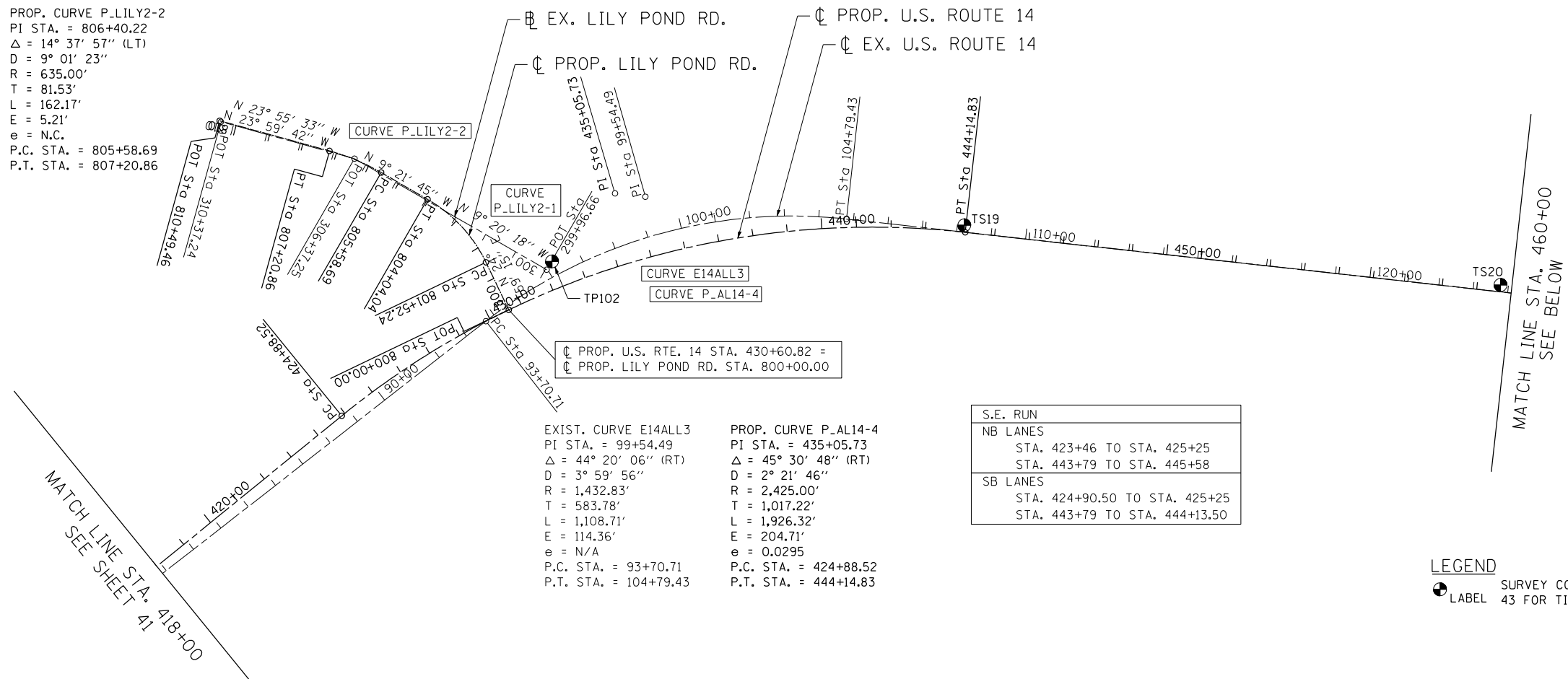


PROP. CURVE P.LILY2-1
 PI STA. = 802+82.05
 $\Delta = 34^\circ 21' 00''$ (LT)
 $D = 13^\circ 38' 31''$
 $R = 420.00'$
 $T = 129.81'$
 $L = 251.80'$
 $E = 19.60'$
 $e = \text{N.C.}$
 P.C. STA. = 801+52.24
 P.T. STA. = 804+04.04

PROP. CURVE P.LILY2-2
 PI STA. = 806+40.22
 $\Delta = 14^\circ 37' 57''$ (LT)
 $D = 9^\circ 01' 23''$
 $R = 635.00'$
 $T = 81.53'$
 $L = 162.17'$
 $E = 5.21'$
 $e = \text{N.C.}$
 P.C. STA. = 805+58.69
 P.T. STA. = 807+20.86



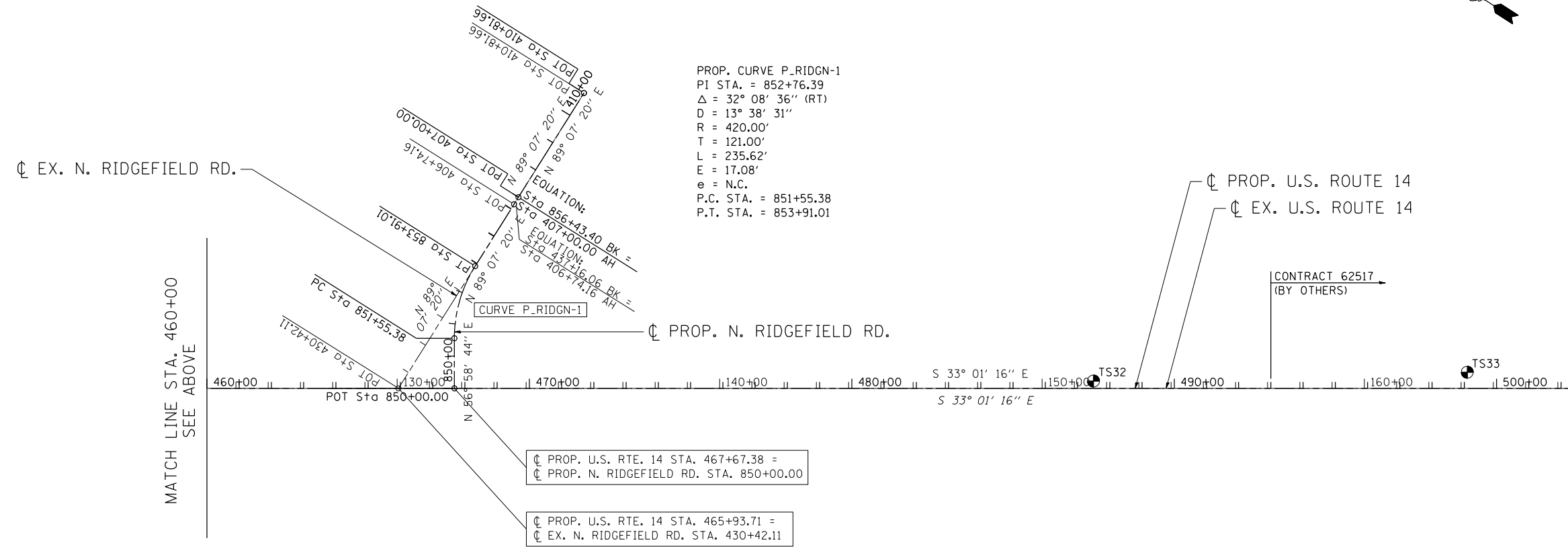
EXIST. CURVE E14ALL3
 PI STA. = 99+54.49
 $\Delta = 44^\circ 20' 06''$ (RT)
 $D = 3^\circ 59' 56''$
 $R = 1,432.83'$
 $T = 583.78'$
 $L = 1,108.71'$
 $E = 114.36'$
 $e = \text{N/A}$
 P.C. STA. = 93+70.71
 P.T. STA. = 104+79.43

PROP. CURVE P.AL14-4
 PI STA. = 435+05.73
 $\Delta = 45^\circ 30' 48''$ (RT)
 $D = 2^\circ 21' 46''$
 $R = 2,425.00'$
 $T = 1,017.22'$
 $L = 1,926.32'$
 $E = 204.71'$
 $e = 0.0295$
 P.C. STA. = 424+88.52
 P.T. STA. = 444+14.83

S.E. RUN	
NB LANES	
STA. 423+46 TO STA. 425+25	
STA. 443+79 TO STA. 445+58	
SB LANES	
STA. 424+90.50 TO STA. 425+25	
STA. 443+79 TO STA. 444+13.50	

LEGEND
 SURVEY CONTROL POINT (SEE SHEET 43 FOR TIES)
 LABEL

FILE NAME = ...
 USER NAME = HECHTBR
 DESIGNED -
 DRAWN - AG
 CHECKED - BRH
 DATE - 11/01/13



PROP. CURVE P.RIDGN-1
 PI STA. = 852+76.39
 $\Delta = 32^\circ 08' 36''$ (RT)
 $D = 13^\circ 38' 31''$
 $R = 420.00'$
 $T = 121.00'$
 $L = 235.62'$
 $E = 17.08'$
 $e = \text{N.C.}$
 P.C. STA. = 851+55.38
 P.T. STA. = 853+91.01

DESCRIPTION	STATION	NORTHING	EASTING
EX. U.S. ROUTE 14			
P.C. E14ALL3	93+70.71	2,042,864.2604	969,664.3578
P.I. E14ALL3	99+54.49	2,042,736.4771	970,233.9809
P.T. E14ALL3	104+79.43	2,042,246.9952	970,552.1106
P.C. E14ALL4	186+19.96	2,035,421.4054	974,988.2768
P.I. E14ALL4	191+16.09	2,035,005.4154	975,258.6419
P.T. E14ALL4	195+66.14	2,034,881.9824	975,739.1721
PROP. U.S. ROUTE 14			
P.C. P.AL14-4	424+88.52	2,043,012.5016	969,189.0822
P.I. P.AL14-4	435+05.73	2,042,810.2999	970,186.0012
P.T. P.AL14-4	444+14.83	2,041,957.3930	970,740.3322
P.O.T.	493+00.00	2,037,777.4795	973,456.9900
EX. LILY POND RD.			
P.O.T. A300	299+96.66	2,042,823.0450	969,890.3882
P.O.T. A301	306+37.25	2,043,455.1409	969,786.4437
P.O.T. A302	310+37.24	2,043,820.7601	969,624.2255
PROP. LILY POND RD.			
P.O.T. LILLY1000	800+00.00	2,042,833.9139	969,731.4130
P.C. P.LILY2-1	801+52.24	2,042,971.9052	969,795.7228
P.I. P.LILY2-1	802+82.05	2,043,089.5662	969,850.5578
P.T. P.LILY2-1	804+04.04	2,043,217.6483	969,829.4398
P.C. P.LILY2-2	805+58.69	2,043,370.2425	969,804.2803
P.I. P.LILY2-2	806+40.22	2,043,450.6842	969,791.0172
P.T. P.LILY2-2	807+20.86	2,043,525.1665	969,757.8633
P.O.T. LILLY1001	810+49.46	2,043,825.3620	969,624.2390
EX. RIDGEFIELD RD.			
P.O.T. A6	430+42.11	2,040,130.4691	971,927.7078
P.O.T. A7	406+74.16	2,040,140.7942	972,601.5789
P.O.T. A8	410+81.66	2,040,147.0375	973,009.0332
PROP. RIDGEFIELD RD.			
P.O.T. A850	850+00.00	2,039,984.8541	972,022.3471
P.C. P.RIDGN-1	851+55.38	2,040,069.5303	972,152.6318
P.I. P.RIDGN-1	852+76.39	2,040,135.4698	972,254.0880
P.T. P.RIDGN-1	853+91.01	2,040,137.3236	972,375.0753
P.O.T. A851	407+00.00	2,040,141.1901	972,627.4193
P.O.T. A852	410+81.66	2,040,147.0375	973,009.0332

STATE OF ILLINOIS
DEPARTMENT OF TRANSPORTATION
 U.S. ROUTE 14

ALIGNMENTS, TIES & BENCHMARKS - II

SCALE: 1"=200' SHEET NO. OF SHEETS STA. TO STA.

F.A.P. RTE.	SECTION	COUNTY	TOTAL SHEETS	SHEET NO.
305	27R-2	MCHENRY	673	42
CONTRACT NO. 62268				
FED. ROAD DIST. NO. 1 ILLINOIS FED. AID PROJECT				