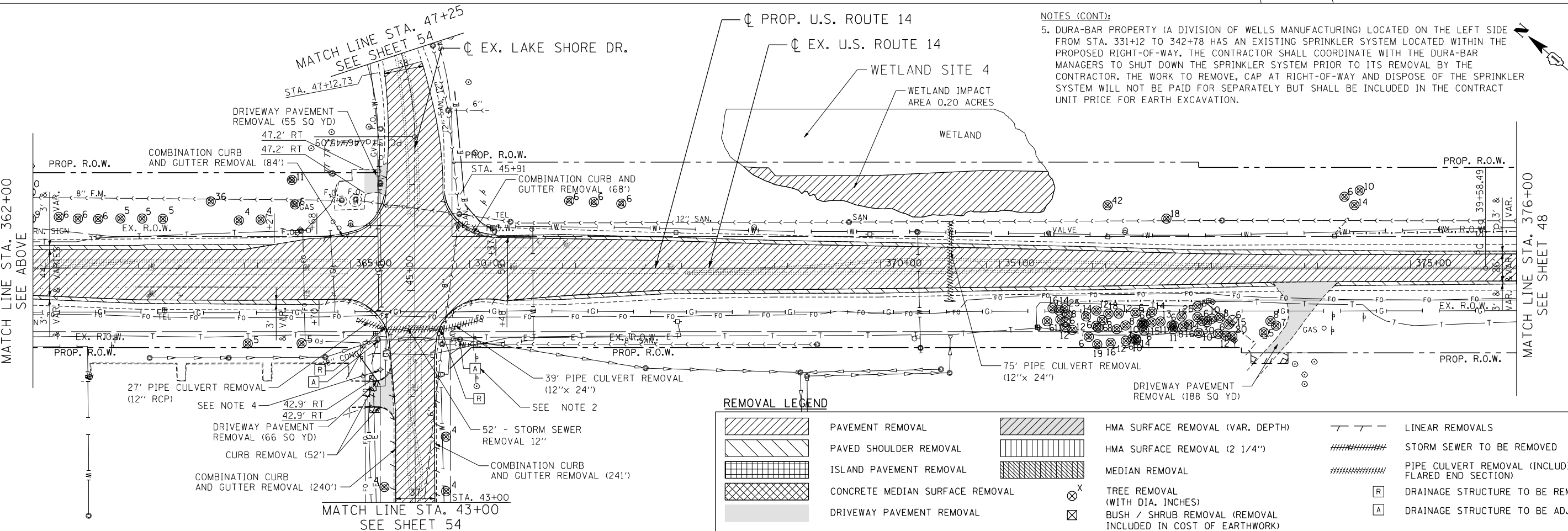


- NOTES:**
- PARTIAL STATIONING AND OFFSETS BASED OFF THE PROPOSED U.S. ROUTE 14 CENTERLINE.
 - THIS STRUCTURE SHALL BE ADJUSTED TWICE, ONCE DURING PRESTAGE TEMPORARY WIDENING AND THEN TO THE FINAL GRADE. EACH ADJUSTMENT WILL BE PAID FOR SEPARATELY. SEE SHEET 210 FOR PRESTAGE ADJUSTMENT AND SHEET 253 FOR FINAL ADJUSTMENT.
 - SEE CITY OF WOODSTOCK EXISTING UTILITY AND REMOVAL PLAN SHEETS FOR EXISTING CITY OF WOODSTOCK UTILITY REMOVALS.
 - THE REMOVAL OF THE EXISTING LIGHT POLE WILL NOT BE PAID FOR SEPARATELY, BUT SHALL BE INCLUDED IN CLEARING.



- NOTES (CONT):**
- DURA-BAR PROPERTY (A DIVISION OF WELLS MANUFACTURING) LOCATED ON THE LEFT SIDE FROM STA. 331+12 TO 342+78 HAS AN EXISTING SPRINKLER SYSTEM LOCATED WITHIN THE PROPOSED RIGHT-OF-WAY. THE CONTRACTOR SHALL COORDINATE WITH THE DURA-BAR MANAGERS TO SHUT DOWN THE SPRINKLER SYSTEM PRIOR TO ITS REMOVAL BY THE CONTRACTOR. THE WORK TO REMOVE, CAP AT RIGHT-OF-WAY AND DISPOSE OF THE SPRINKLER SYSTEM WILL NOT BE PAID FOR SEPARATELY BUT SHALL BE INCLUDED IN THE CONTRACT UNIT PRICE FOR EARTH EXCAVATION.

REMOVAL LEGEND

	PAVEMENT REMOVAL		HMA SURFACE REMOVAL (VAR. DEPTH)		LINEAR REMOVALS
	PAVED SHOULDER REMOVAL		HMA SURFACE REMOVAL (2 1/4")		STORM SEWER TO BE REMOVED
	ISLAND PAVEMENT REMOVAL		MEDIAN REMOVAL		PIPE CULVERT TO BE REMOVED (INCLUDING FLARED END SECTION)
	CONCRETE MEDIAN SURFACE REMOVAL		TREE REMOVAL (WITH DIA. INCHES)		DRAINAGE STRUCTURE TO BE REMOVED
	DRIVEWAY PAVEMENT REMOVAL		BUSH / SHRUB REMOVAL (REMOVAL INCLUDED IN COST OF EARTHWORK)		DRAINAGE STRUCTURE TO BE ADJUSTED

FILE NAME = ...
 USER NAME = HECHTBR
 DESIGNED -
 DRAWN - RJS
 CHECKED - BRH
 DATE - 11/01/13
 REVISED -
 REVISED -
 REVISED -
 REVISED -

**STATE OF ILLINOIS
DEPARTMENT OF TRANSPORTATION
U.S. ROUTE 14**

**EXISTING ROADWAY &
REMOVAL PLANS
STA. 348+00 TO STA. 376+00**

SCALE: 1"=50'	SHEET NO. OF SHEETS	STA. TO STA.	F.A.P. RTE. 305	SECTION 27R-2	COUNTY MCHENRY	TOTAL SHEETS 673	SHEET NO. 47
			CONTRACT NO. 62268				
FED. ROAD DIST. NO. 1 ILLINOIS FED. AID PROJECT							