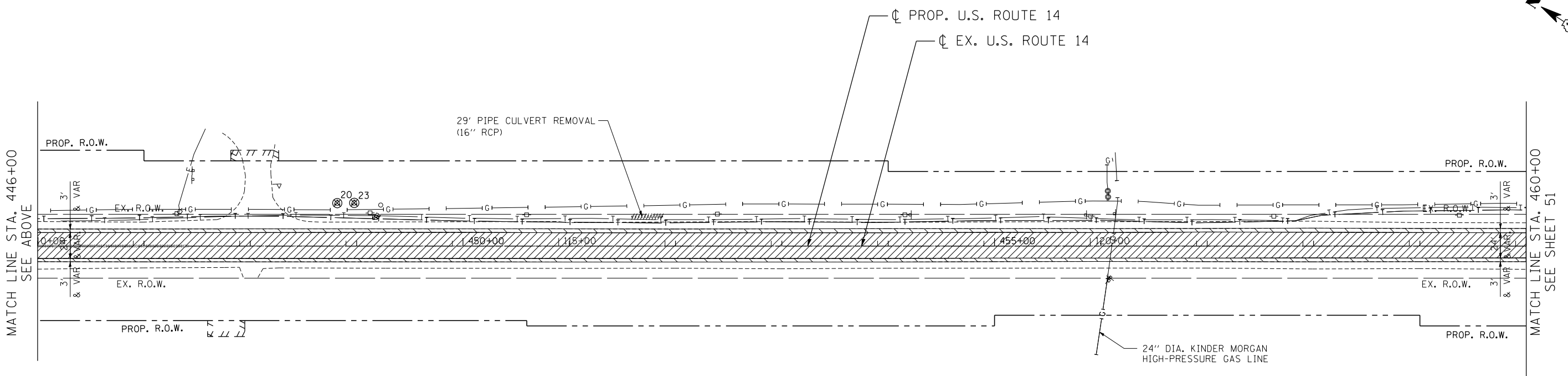
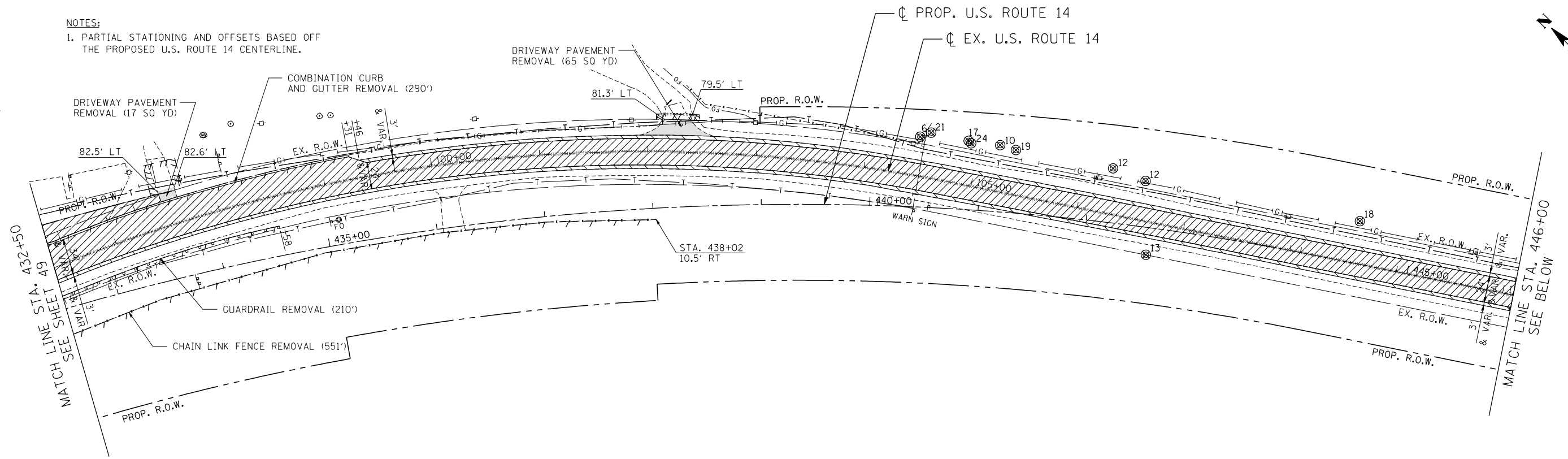


NOTES:
1. PARTIAL STATIONING AND OFFSETS BASED OFF THE PROPOSED U.S. ROUTE 14 CENTERLINE.



REMOVAL LEGEND

	PAVEMENT REMOVAL		HMA SURFACE REMOVAL (VAR. DEPTH)		LINEAR REMOVALS
	PAVED SHOULDER REMOVAL		HMA SURFACE REMOVAL (2 1/4")		STORM SEWER TO BE REMOVED
	ISLAND PAVEMENT REMOVAL		MEDIAN REMOVAL		PIPE CULVERT REMOVAL (INCLUDING FLARED END SECTION)
	CONCRETE MEDIAN SURFACE REMOVAL		TREE REMOVAL (WITH DIA. INCHES)		DRAINAGE STRUCTURE TO BE REMOVED
	DRIVEWAY PAVEMENT REMOVAL		BUSH / SHRUB REMOVAL (REMOVAL INCLUDED IN COST OF EARTHWORK)		DRAINAGE STRUCTURE TO BE ADJUSTED

\P\RD\00815.DGN, \GEN\00817.DGN, \RD\00815.DGN, \TTB\00817.DGN, \T\DOCUMENT\19349901\CIVIL\DCN\REM\00817.DGN
 11-07-2013, 16:21:44
 HECHTBR

FILE NAME =	USER NAME = HECHTBR	DESIGNED -	REVISED -
#FILE#		DRAWN - RJS	REVISED -
exp U.S. Services Inc.		CHECKED - BRH	REVISED -
11-07-2013, 16:21:44		DATE - 11/01/13	REVISED -

STATE OF ILLINOIS
DEPARTMENT OF TRANSPORTATION
 U.S. ROUTE 14

EXISTING ROADWAY & REMOVAL PLANS			
STA. 432+50 TO STA. 460+00			
SCALE: 1"=50'	SHEET NO.	OF SHEETS	STA. TO STA.

F.A.P. RTE.	SECTION	COUNTY	TOTAL SHEETS	SHEET NO.
305	27R-2	MCHENRY	673	50
CONTRACT NO. 62268				
FED. ROAD DIST. NO. 1 ILLINOIS FED. AID PROJECT				