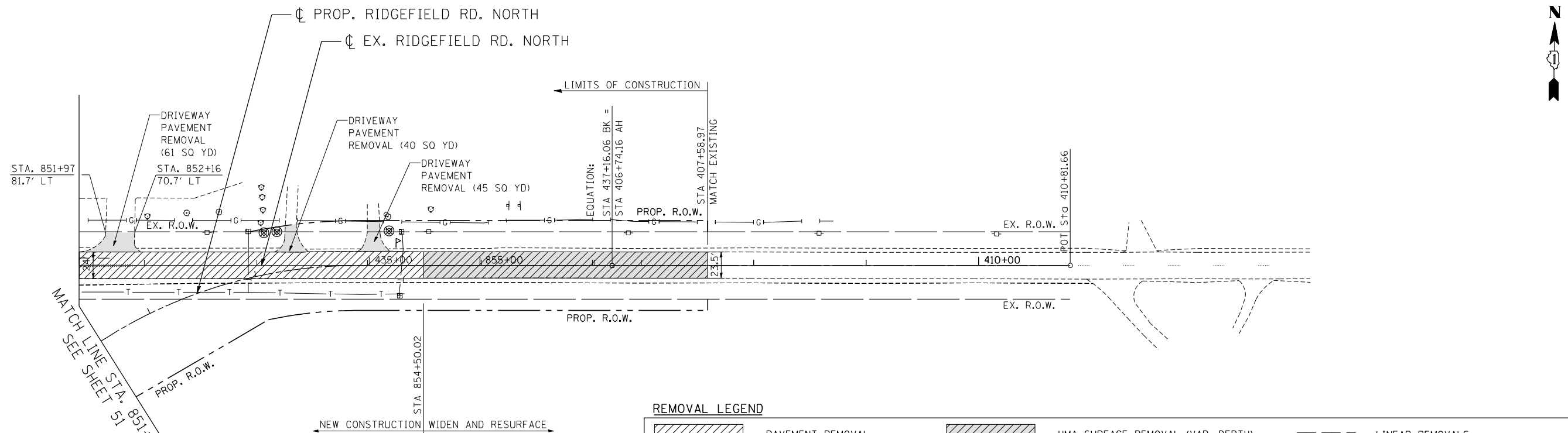
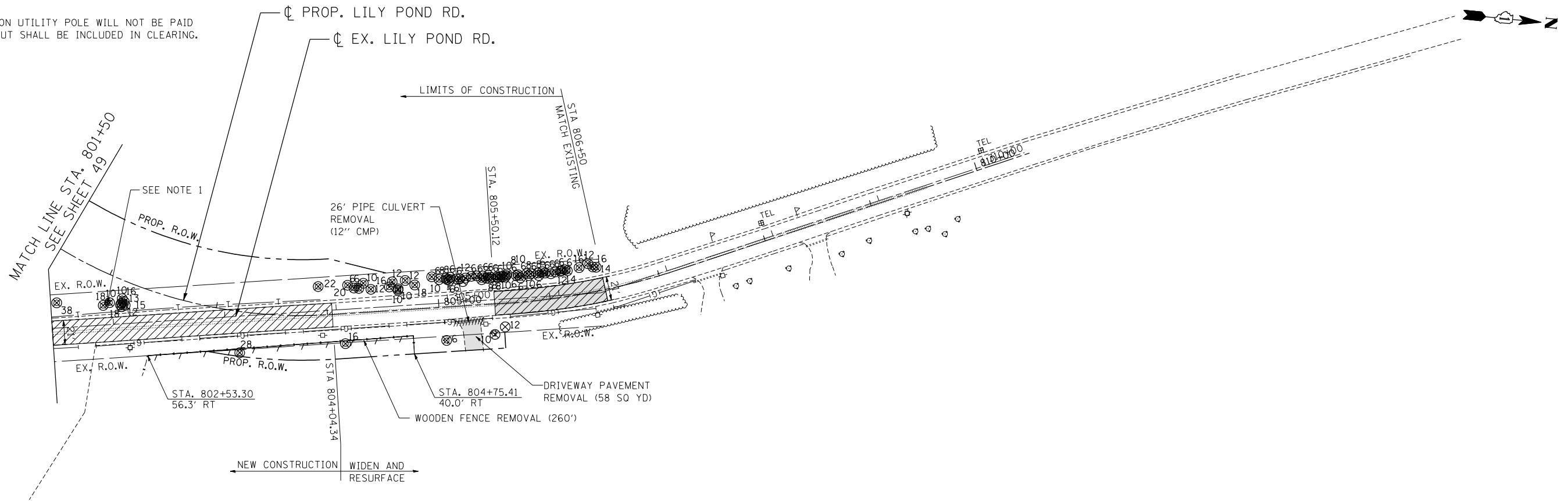


NOTES:

1. REMOVAL OF ABANDON UTILITY POLE WILL NOT BE PAID FOR SEPARATELY, BUT SHALL BE INCLUDED IN CLEARING.



REMOVAL LEGEND

	PAVEMENT REMOVAL		HMA SURFACE REMOVAL (VAR. DEPTH)		LINEAR REMOVALS
	PAVED SHOULDER REMOVAL		HMA SURFACE REMOVAL (2 1/4")		STORM SEWER TO BE REMOVED
	ISLAND PAVEMENT REMOVAL		MEDIAN REMOVAL		PIPE CULVERT TO BE REMOVED (INCLUDING FLARED END SECTION)
	CONCRETE MEDIAN SURFACE REMOVAL		TREE REMOVAL (WITH DIA. INCHES)		DRAINAGE STRUCTURE TO BE REMOVED
	DRIVEWAY PAVEMENT REMOVAL		BUSH / SHRUB REMOVAL (REMOVAL INCLUDED IN COST OF EARTHWORK)		DRAINAGE STRUCTURE TO BE ADJUSTED

FILE NAME = ... USER NAME = HECHTBR ... DESIGNED - ... REVISED - ... DRAWN - RJS ... CHECKED - BRH ... DATE - 11/01/13 ... PLOT SCALE = ... PLOT DATE = ...

		STATE OF ILLINOIS DEPARTMENT OF TRANSPORTATION U.S. ROUTE 14				EXISTING ROADWAY & REMOVAL PLANS LILY POND & RIDGEFIELD ROAD				F.A.P. RTE. 305		SECTION 27R-2		COUNTY MCHENRY		TOTAL SHEETS 673		SHEET NO. 53	
		SCALE: 1"=50'		SHEET NO. OF SHEETS STA. TO STA.		CONTRACT NO. 62268		FED. ROAD DIST. NO. 1 ILLINOIS FED. AID PROJECT											