

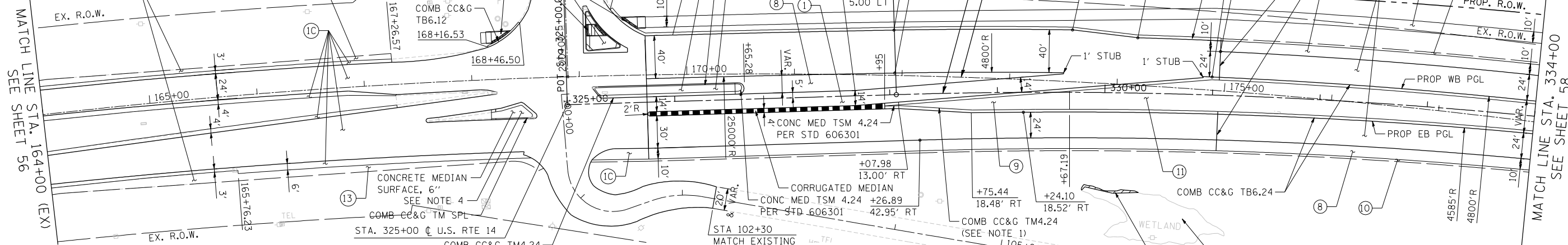
**NOTES:**

- CURB AND GUTTER SHALL TRANSITION FROM TM4.24 TO TB6.24 FROM STA. 328+75.44 TO STA. 328+80.44.
- SEE SHEET 74 FOR INTERMEDIATE ISLAND DETAILS.
- EXPANSION JOINT WILL NOT BE PAID FOR SEPARATELY. LOCATION TO BE DETERMINED BY THE ENGINEER.
- SEE SHEET 75 FOR MEDIAN ISLAND DETAILS.
- SEE SHEET 33 FOR SHOULDER RUMBLE STRIPS, 8 INCH LOCATIONS.

PLAN	SURVEYED	DATE
	PLOTTED	
	CHECKED	
	BY	
	NO. _____	

GRADING AND SHAPING SHOULDERS

MATCH LINE STA. 164+00 (EX)  
SEE SHEET 56

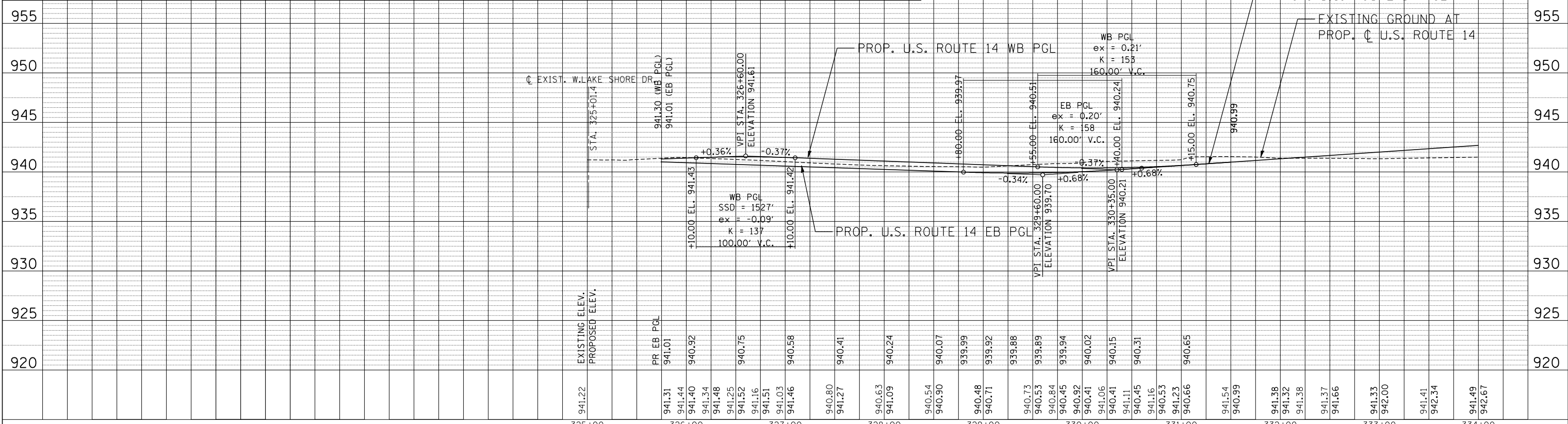


MATCH LINE STA. 334+00  
SEE SHEET 58

**PROPOSED LEGEND** - PAVEMENT DESIGN INCLUDES AGGREGATE SUBGRADE IMPROVEMENT, 12" (SEE TYPICAL SECTIONS)

- |  |  |  |
|--|--|--|
| <p>① US ROUTE 14*<br/>P.C.C. PAVEMENT 9 3/4" JOINTED STABILIZED SUBBASE (HMA) 4 1/2"</p> <p>② MULTI-USE PATH<br/>HMA SURFACE COURSE, MIX "D", N50, 1 1/2" HMA BINDER COURSE, IL-19, N50, 2 1/2" AGGREGATE BASE COURSE, TYPE B 10" (SEE NOTE 14 &amp; 26 SHEET 3)</p> <p>③ N. RIDGEFIELD RESURFACING<br/>HMA SURFACE COURSE, MIX "D", N70, 2" LEV BIND MM N70 3/4" &amp; VARIES</p> <p>④ LILY POND WIDENING*<br/>HMA SURFACE COURSE, MIX "D", N70, 2" LEV BIND MM N70 3/4" &amp; VARIES HMA BASE COURSE WIDENING, 6 1/4" N. RIDGEFIELD WIDENING*</p> <p>⑤ N. RIDGEFIELD RESURFACING<br/>HMA SURFACE COURSE, MIX "D", N70, 2" LEV BIND MM N70 3/4" &amp; VARIES</p> <p>⑥ LILY POND RESURFACING<br/>HMA SURFACE COURSE, MIX "D", N70, 2" LEV BIND MM N70 3/4" &amp; VARIES</p> <p>⑦ US ROUTE 14 RESURFACING<br/>HMA SURFACE COURSE, MIX "D", N70 1 3/4" POLY LEV BIND MM IL-4.75 N50 3/4"</p> | <p>⑧ HMA SURFACE COURSE, MIX "D", N70, 2" LEV BIND MM N70 3/4" &amp; VARIES HMA BASE COURSE WIDENING, 6 1/4" N. RIDGEFIELD WIDENING*</p> <p>⑨ HMA SURFACE COURSE, MIX "D", N70, 2" LEV BIND MM N70 3/4" &amp; VARIES HMA BASE COURSE WIDENING, 7" PRIVATE ENTRANCE DRIVEWAY</p> <p>⑩ HMA SURFACE COURSE, MIX "D", N50, 2" HMA BASE COURSE, 6" COMMERCIAL ENTRANCE DRIVEWAY</p> <p>⑪ HMA SURFACE COURSE, MIX "D", N50, 2" HMA BASE COURSE, 8"</p> | <p>⑫ FIELD ENTRANCE DRIVEWAY<br/>HMA SURFACE COURSE, MIX "D", N50, 2" AGGREGATE BASE COURSE, TYPE B 8"</p> <p>⑬ HMA SHOULDERS, 8"</p> <p>⑭ PCC SHOULDERS, 9 3/4"</p> <p>⑮ CONCRETE MEDIAN SURFACE 4"</p> <p>⑯ AGGREGATE SHOULDERS, TYPE B 6"</p> <p>⑰ LANDSCAPE MEDIAN (SEE LANDSCAPING PLANS)</p> <p>⑱ AGGREGATE SHOULDERS, TYPE B 8"</p> <p>⑲ AGGREGATE WEDGE SHOULDER, TYPE B</p> |
|--|--|--|

PROFILE	SURVEYED	DATE
	PLOTTED	
	CHECKED	
	BY	
	NO. _____	



**STATE OF ILLINOIS  
DEPARTMENT OF TRANSPORTATION  
U.S. ROUTE 14**

**PROPOSED ROADWAY  
U.S. ROUTE 14 PLAN & PROFILE  
STA. 164+00 (EX) TO STA. 334+00**

FILE NAME =	USER NAME = HECHTBR	DESIGNED -	REVISED -	F.A.P. RTE. = 305	SECTION = 27R-2	COUNTY = MCHENRY	TOTAL SHEETS = 673	SHEET NO. = 57
DESIGNED - RJS	REVISED -	CHECKED - BRH	REVISED -	CONTRACT NO. 62268		FED. ROAD DIST. NO. 1 ILLINOIS FED. AID PROJECT		
DATE = 11/01/13	REVISED -	SCALE: HORIZ. 1"=50'		VERT. 1"=5'		STA. TO STA.		

11-07-2013 16:22:45 HECHTBR  
 T:\DOCUMENT\15134298\CIVIL\GDN\PR08\J.R.DON