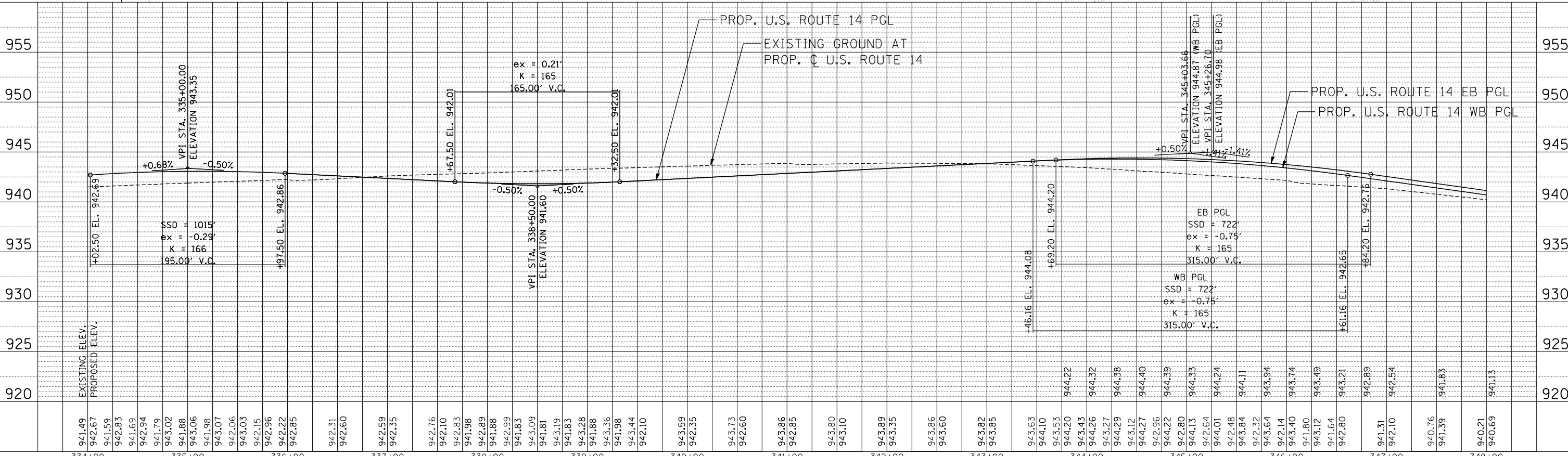
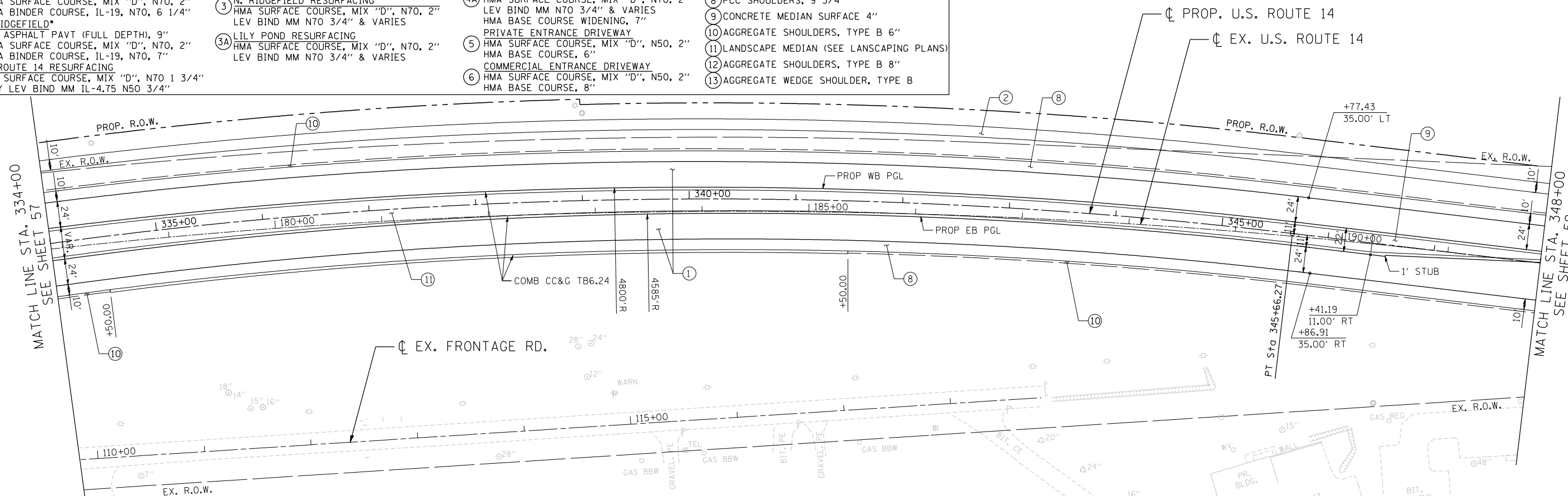


PROPOSED LEGEND • PAVEMENT DESIGN INCLUDES AGGREGATE SUBGRADE IMPROVEMENT, 12" (SEE TYPICAL SECTIONS)

- | | | | |
|---|--|--|--|
| <p>1 US ROUTE 14*
P.C.C. PAVEMENT 9 3/4" JOINTED
STABILIZED SUBBASE (HMA) 4 1/2"</p> <p>1A HMA ASPHALT PAVT (FULL-DEPTH), 8 1/4"
HMA SURFACE COURSE, MIX "D", N70, 2"
HMA BINDER COURSE, IL-19, N70, 6 1/4"
N. RIDGEFIELD*</p> <p>1B HMA ASPHALT PAVT (FULL DEPTH), 9"
HMA SURFACE COURSE, MIX "D", N70, 2"
HMA BINDER COURSE, IL-19, N70, 7"
US ROUTE 14 RESURFACING</p> <p>1C HMA SURFACE COURSE, MIX "D", N70 1 3/4"
POLY LEV BIND MM IL-4.75 N50 3/4"</p> | <p>2 MULTI-USE PATH
HMA SURFACE COURSE, MIX "D", N50, 1 1/2"
HMA BINDER COURSE, IL-19, N50, 2 1/2"
AGGREGATE BASE COURSE, TYPE B 10"
(SEE NOTE 14 & 26 SHEET 3)</p> <p>3 N. RIDGEFIELD RESURFACING
HMA SURFACE COURSE, MIX "D", N70, 2"
LEV BIND MM N70 3/4" & VARIES</p> <p>3A LILY POND RESURFACING
HMA SURFACE COURSE, MIX "D", N70, 2"
LEV BIND MM N70 3/4" & VARIES</p> | <p>4 LILY POND WIDENING*
HMA SURFACE COURSE, MIX "D", N70, 2"
LEV BIND MM N70 3/4" & VARIES
HMA BASE COURSE WIDENING, 6 1/4"
N. RIDGEFIELD WIDENING*</p> <p>4A HMA SURFACE COURSE, MIX "D", N70, 2"
LEV BIND MM N70 3/4" & VARIES
HMA BASE COURSE WIDENING, 7"
PRIVATE ENTRANCE DRIVEWAY
HMA SURFACE COURSE, MIX "D", N50, 2"
HMA BASE COURSE, 6"</p> <p>5 COMMERCIAL ENTRANCE DRIVEWAY
HMA SURFACE COURSE, MIX "D", N50, 2"
HMA BASE COURSE, 8"</p> | <p>6A FIELD ENTRANCE DRIVEWAY
HMA SURFACE COURSE, MIX "D", N50, 2"
AGGREGATE BASE COURSE, TYPE B 8"</p> <p>7 HMA SHOULDERS, 8"</p> <p>8 PCC SHOULDERS, 9 3/4"</p> <p>9 CONCRETE MEDIAN SURFACE 4"</p> <p>10 AGGREGATE SHOULDERS, TYPE B 6"</p> <p>11 LANDSCAPE MEDIAN (SEE LANSCAPING PLANS)</p> <p>12 AGGREGATE SHOULDERS, TYPE B 8"</p> <p>13 AGGREGATE WEDGE SHOULDER, TYPE B</p> |
|---|--|--|--|

PLAN	SURVEYED	DATE
	PLOTTED	
	CHECKED	
	BY	
	NO.	

PROFILE	SURVEYED	DATE
	PLOTTED	
	CHECKED	
	BY	
	NO.	



11-07-2013 16:22:58 HECHTBR
 T:\DOCUMENT\1134398\CIVIL\UDR\PROP08\15.DGN

FILE NAME =	USER NAME = HECHTBR	DESIGNED -	REVISED -
#FILE#		DRAWN - RJS	REVISED -
exp U.S. Services Inc.		CHECKED - BRH	REVISED -
CHICAGO, IL		DATE - 11/01/13	REVISED -
BUILDING-EARTH & ENVIRONMENT-ENERGY			
INDUSTRIAL-INFRASTRUCTURE-SUSTAINABILITY			

STATE OF ILLINOIS
 DEPARTMENT OF TRANSPORTATION
 U.S. ROUTE 14

PROPOSED ROADWAY
 U.S. ROUTE 14 PLAN & PROFILE
 STA. 334+00 TO STA. 348+00

SCALE: HORIZ. 1"=50'	VERT. 1"=5'	STA. TO STA.	F.A.P. RTE. 305	SECTION 27R-2	COUNTY MCHENRY	TOTAL SHEETS 673	SHEET NO. 58
			FED. ROAD DIST. NO. 1 ILLINOIS FED. AID PROJECT				

CONTRACT NO. 62268