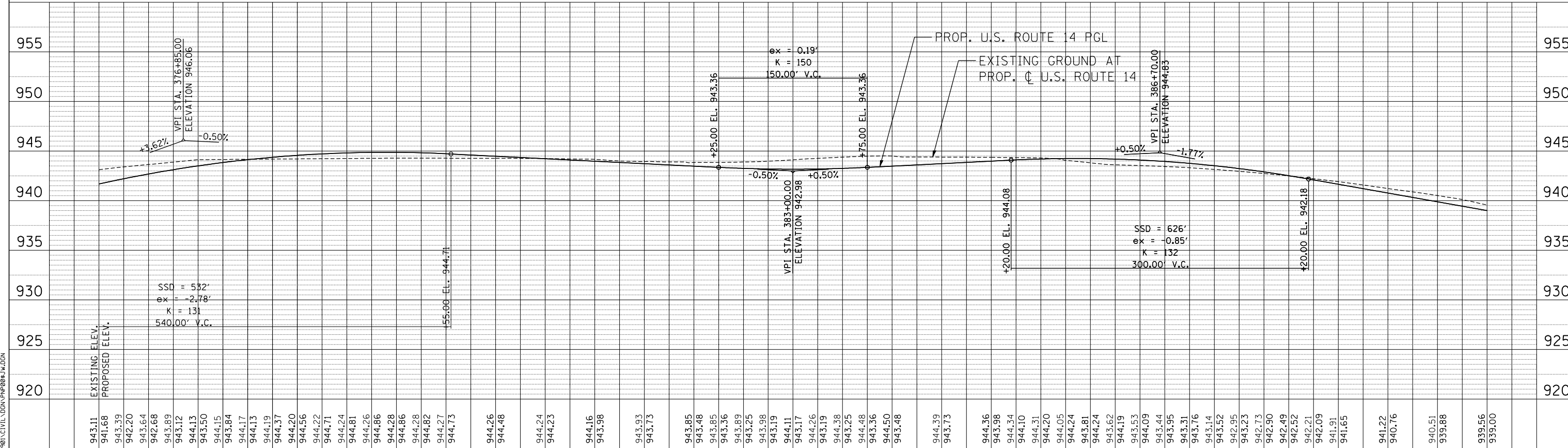
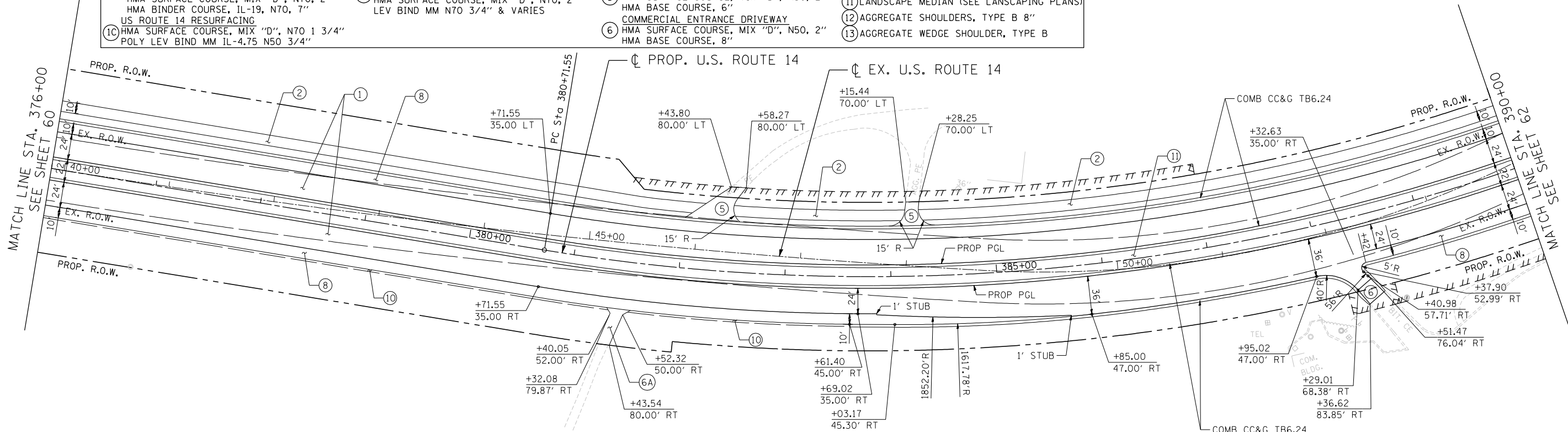


PROPOSED LEGEND • PAVEMENT DESIGN INCLUDES AGGREGATE SUBGRADE IMPROVEMENT, 12" (SEE TYPICAL SECTIONS)

- | | | | |
|--|--|---|---|
| <p>① US ROUTE 14*
P.C.C. PAVEMENT 9 3/4" JOINTED
STABILIZED SUBBASE (HMA) 4 1/2"
LILY POND*</p> <p>①A HMA ASPHALT PAVT (FULL-DEPTH), 8 1/4"
HMA SURFACE COURSE, MIX "D", N70, 2"
HMA BINDER COURSE, IL-19, N70, 6 1/4"
N. RIDGEFIELD*</p> <p>①B HMA ASPHALT PAVT (FULL DEPTH), 9"
HMA SURFACE COURSE, MIX "D", N70, 2"
HMA BINDER COURSE, IL-19, N70, 7"
US ROUTE 14 RESURFACING</p> <p>①C HMA SURFACE COURSE, MIX "D", N70 1 3/4"
POLY LEV BIND MM IL-4.75 N50 3/4"</p> | <p>② MULTI-USE PATH
HMA SURFACE COURSE, MIX "D", N50, 1 1/2"
HMA BINDER COURSE, IL-19, N50, 2 1/2"
AGGREGATE BASE COURSE, TYPE B 10"
(SEE NOTE 14 & 26 SHEET 3)</p> <p>③ N. RIDGEFIELD RESURFACING
HMA SURFACE COURSE, MIX "D", N70, 2"
LEV BIND MM N70 3/4" & VARIES</p> <p>③A LILY POND RESURFACING
HMA SURFACE COURSE, MIX "D", N70, 2"
LEV BIND MM N70 3/4" & VARIES</p> | <p>④ LILY POND WIDENING*
HMA SURFACE COURSE, MIX "D", N70, 2"
LEV BIND MM N70 3/4" & VARIES
HMA BASE COURSE WIDENING, 6 1/4"
N. RIDGEFIELD WIDENING*</p> <p>④A HMA SURFACE COURSE, MIX "D", N70, 2"
LEV BIND MM N70 3/4" & VARIES
HMA BASE COURSE WIDENING, 7"</p> <p>⑤ PRIVATE ENTRANCE DRIVEWAY
HMA SURFACE COURSE, MIX "D", N50, 2"
HMA BASE COURSE, 6"</p> <p>⑥ COMMERCIAL ENTRANCE DRIVEWAY
HMA SURFACE COURSE, MIX "D", N50, 2"
HMA BASE COURSE, 8"</p> | <p>⑥A FIELD ENTRANCE DRIVEWAY
HMA SURFACE COURSE, MIX "D", N50, 2"
AGGREGATE BASE COURSE, TYPE B 8"</p> <p>⑦ HMA SHOULDERS, 8"</p> <p>⑧ PCC SHOULDERS, 9 3/4"</p> <p>⑨ CONCRETE MEDIAN SURFACE 4"</p> <p>⑩ AGGREGATE SHOULDERS, TYPE B 6"</p> <p>⑪ LANDSCAPE MEDIAN (SEE LANDSCAPING PLANS)</p> <p>⑫ AGGREGATE SHOULDERS, TYPE B 8"</p> <p>⑬ AGGREGATE WEDGE SHOULDER, TYPE B</p> |
|--|--|---|---|



PLAN	SURVEYED	DATE
NOTE BOOK	PLOTTED	BY
NO.	CHECKED	
	AT	
	FILE NAME	
	CARD	

PROFILE	SURVEYED	DATE
NOTE BOOK	PLOTTED	BY
NO.	CHECKED	
	AT	
	FILE NAME	
	CARD	

11-07-2013 16:23:19 HECHTBR
 T:\DOCUMENT\134398\134398\CIVIL\UDN\134398\134398.dgn

FILE NAME =	USER NAME = HECHTBR	DESIGNED -	REVISED -	<p align="center">STATE OF ILLINOIS DEPARTMENT OF TRANSPORTATION U.S. ROUTE 14</p>	<p align="center">PROPOSED ROADWAY U.S. ROUTE 14 PLAN & PROFILE STA. 376+00 TO STA. 390+00</p>	F.A.P. R.T.E.	SECTION	COUNTY	TOTAL SHEETS	SHEET NO.
#FILEL#		DRAWN - RJS	REVISED -		305	27R-2	MCHENRY	673	61	
PLOT SCALE = *SCALE*		CHECKED - BRH	REVISED -		CONTRACT NO. 62268					
PLOT DATE = *DATE*		DATE - 11/01/13	REVISED -		FED. ROAD DIST. NO. 1 ILLINOIS FED. AID PROJECT					

SCALE: HORIZ. 1"=50' VERT. 1"=5' STA. TO STA.