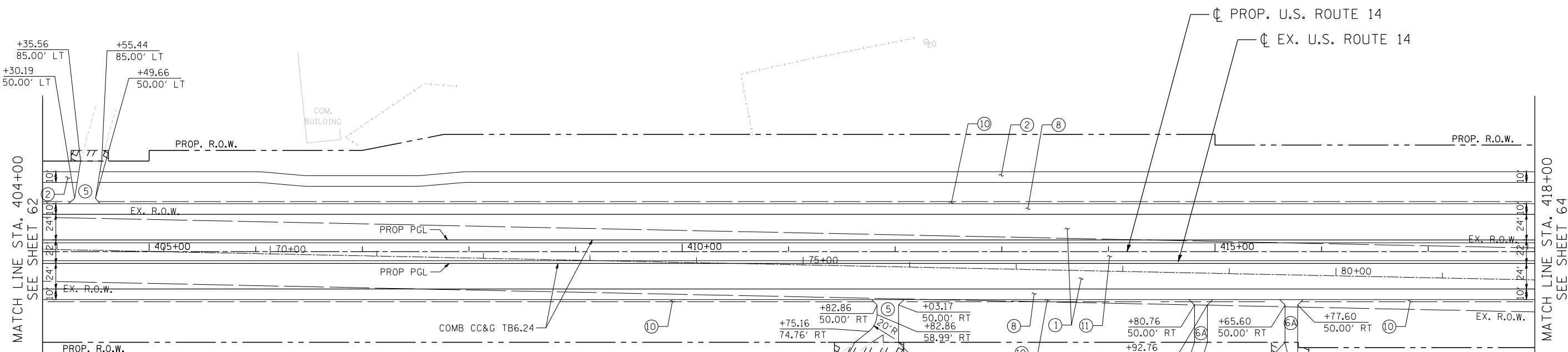


PLAN	SURVEYED	BY	DATE
	PLOTTED		
	CHECKED		
	AT		
	NO. _____		
	FILE NAME		

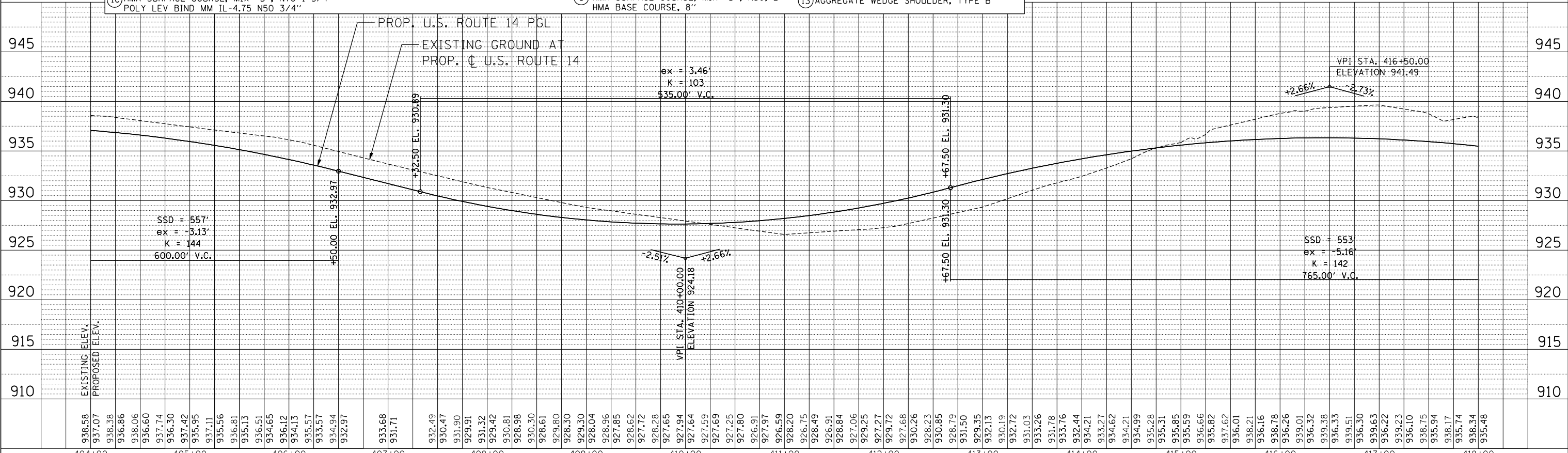
PROFILE	SURVEYED	BY	DATE
	PLOTTED		
	CHECKED		
	AT		
	NO. _____		
	FILE NAME		

11-07-2013 16:23:07 HECHTBR
 T:\DOCUMENT\131343290\CIVIL\UDR\PROP\0813.DGN



- PROPOSED LEGEND** • PAVEMENT DESIGN INCLUDES AGGREGATE SUBGRADE IMPROVEMENT, 12" (SEE TYPICAL SECTIONS)
- | | | | |
|---|---|--|--|
| <p>US ROUTE 14*</p> <p>① P.C.C. PAVEMENT 9 3/4" JOINTED STABILIZED SUBBASE (HMA) 4 1/2" LILY POND*</p> <p>①A HMA ASPHALT PAVT (FULL-DEPTH), 8 1/4" HMA SURFACE COURSE, MIX "D", N70, 2" HMA BINDER COURSE, IL-19, N70, 6 1/4" N. RIDGEFIELD*</p> <p>①B HMA ASPHALT PAVT (FULL DEPTH), 9" HMA SURFACE COURSE, MIX "D", N70, 2" HMA BINDER COURSE, IL-19, N70, 7" US ROUTE 14 RESURFACING</p> <p>①C HMA SURFACE COURSE, MIX "D", N70 1 3/4" POLY LEV BIND MM IL-4.75 N50 3/4"</p> | <p>② MULTI-USE PATH</p> <p>HMA SURFACE COURSE, MIX "D", N50, 1 1/2" HMA BINDER COURSE, IL-19, N50, 2 1/2" AGGREGATE BASE COURSE, TYPE B 10" (SEE NOTE 14 & 26 SHEET 3)</p> <p>③ N. RIDGEFIELD RESURFACING</p> <p>HMA SURFACE COURSE, MIX "D", N70, 2" LEV BIND MM N70 3/4" & VARIES</p> <p>③A LILY POND RESURFACING</p> <p>HMA SURFACE COURSE, MIX "D", N70, 2" LEV BIND MM N70 3/4" & VARIES</p> | <p>LILY POND WIDENING*</p> <p>④ HMA SURFACE COURSE, MIX "D", N70, 2" LEV BIND MM N70 3/4" & VARIES HMA BASE COURSE WIDENING, 6 1/4" N. RIDGEFIELD WIDENING*</p> <p>④A HMA SURFACE COURSE, MIX "D", N70, 2" LEV BIND MM N70 3/4" & VARIES HMA BASE COURSE WIDENING, 7" PRIVATE ENTRANCE DRIVEWAY</p> <p>⑤ HMA SURFACE COURSE, MIX "D", N50, 2" HMA BASE COURSE, 6" COMMERCIAL ENTRANCE DRIVEWAY</p> <p>⑥ HMA SURFACE COURSE, MIX "D", N50, 2" HMA BASE COURSE, 8"</p> | <p>FIELD ENTRANCE DRIVEWAY</p> <p>⑥A HMA SURFACE COURSE, MIX "D", N50, 2" AGGREGATE BASE COURSE, TYPE B 8"</p> <p>⑦ HMA SHOULDERS, 8"</p> <p>⑧ PCC SHOULDERS, 9 3/4"</p> <p>⑨ CONCRETE MEDIAN SURFACE 4"</p> <p>⑩ AGGREGATE SHOULDERS, TYPE B 6"</p> <p>⑪ LANDSCAPE MEDIAN (SEE LANDSCAPING PLANS)</p> <p>⑫ AGGREGATE SHOULDERS, TYPE B 8"</p> <p>⑬ AGGREGATE WEDGE SHOULDER, TYPE B</p> |
|---|---|--|--|

NOTE
 1. THE PORTION OF THE PROPOSED FIELD ENTRANCE BEYOND THE PROPOSED R.O.W. SHALL BE CONSTRUCTED AS AGGREGATE BASE COURSE, TYPE B 8" (50 YD).



FILE NAME =	USER NAME = HECHTBR	DESIGNED -	REVISED -
#FILEL#		DRAWN - RJS	REVISED -
		CHECKED - BRH	REVISED -
		DATE - 11/01/13	REVISED -

STATE OF ILLINOIS		PROPOSED ROADWAY	
DEPARTMENT OF TRANSPORTATION		U.S. ROUTE 14 PLAN & PROFILE	
U.S. ROUTE 14		STA. 404+00 TO STA. 418+00	
SCALE: HORIZ. 1"=50'	VERT. 1"=5'	STA.	TO STA.

F.A.P. RTE. 305	SECTION 27R-2	COUNTY MCHENRY	TOTAL SHEETS 673	SHEET NO. 63
CONTRACT NO. 62268				
FED. ROAD DIST. NO. 1 ILLINOIS FED. AID PROJECT				