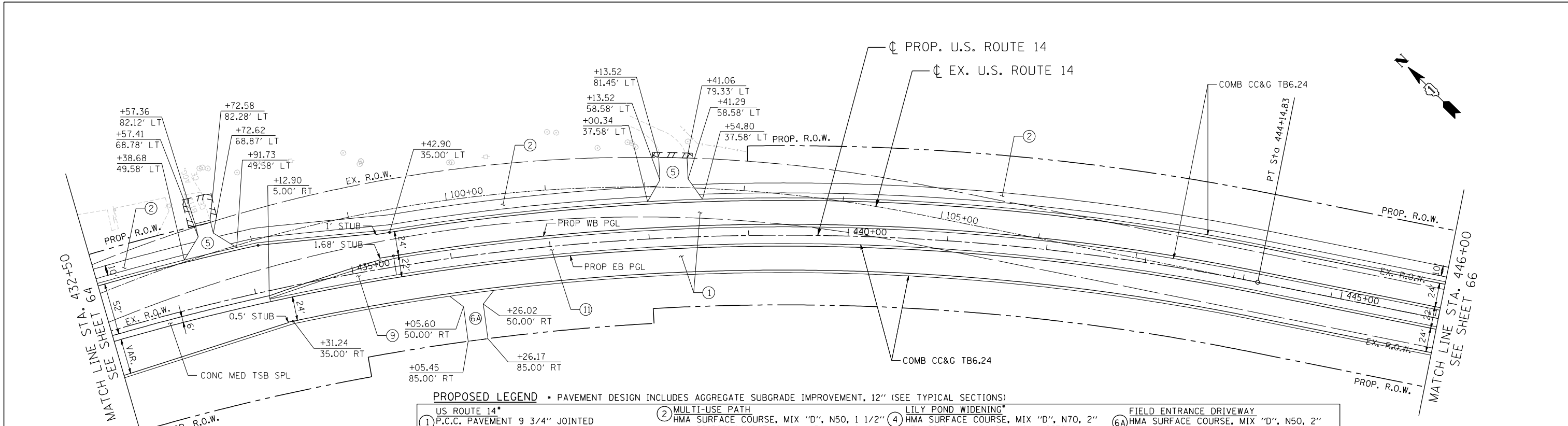


PLAN	SURVEYED	BY	DATE
	PLOTTED		
	CHECKED		
	AT		
	FILE NAME		
	NO.		

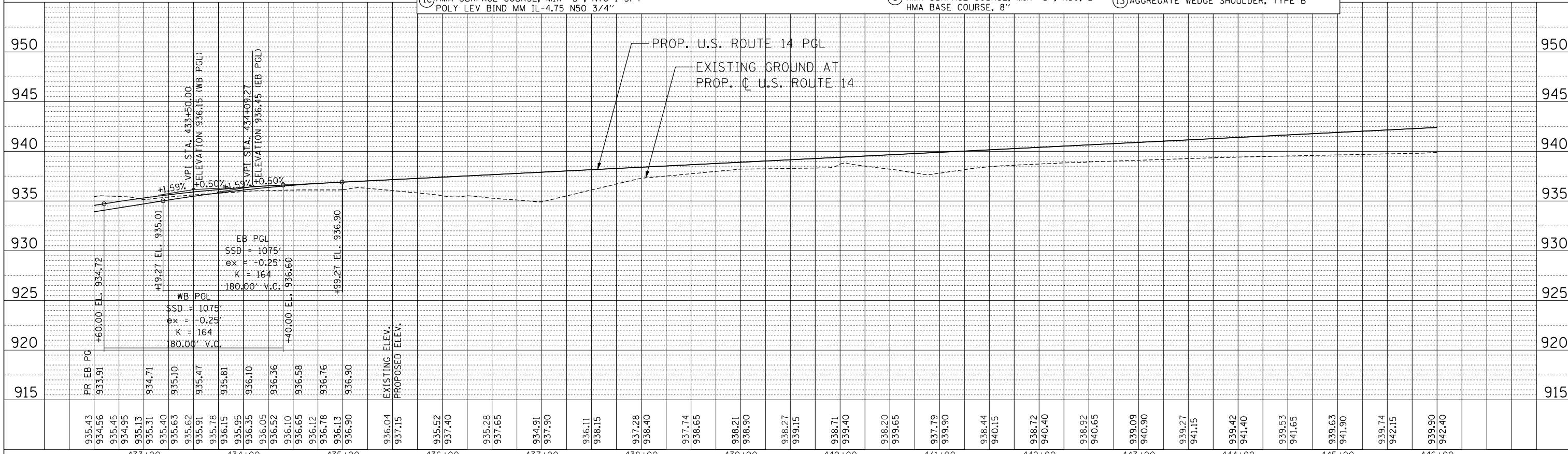
PROFILE	SURVEYED	BY	DATE
	PLOTTED		
	CHECKED		
	AT		
	FILE NAME		
	NO.		

11-07-2013 16:23:59 HECHTBR  
 T:\DOCUMENT\13134390\CIVIL\UDN\PR0813.DGN



**PROPOSED LEGEND • PAVEMENT DESIGN INCLUDES AGGREGATE SUBGRADE IMPROVEMENT, 12" (SEE TYPICAL SECTIONS)**

① US ROUTE 14* P.C.C. PAVEMENT 9 3/4" JOINTED STABILIZED SUBBASE (HMA) 4 1/2"	② MULTI-USE PATH HMA SURFACE COURSE, MIX "D", N50, 1 1/2" HMA BINDER COURSE, IL-19, N50, 2 1/2" AGGREGATE BASE COURSE, TYPE B 10" (SEE NOTE 14 & 26 SHEET 3)	③ N. RIDGEFIELD RESURFACING HMA SURFACE COURSE, MIX "D", N70, 2" LEV BIND MM N70 3/4" & VARIES	④ LILY POND WIDENING* HMA SURFACE COURSE, MIX "D", N70, 2" LEV BIND MM N70 3/4" & VARIES HMA BASE COURSE WIDENING, 6 1/4"	⑤ PRIVATE ENTRANCE DRIVEWAY HMA SURFACE COURSE, MIX "D", N50, 2" HMA BASE COURSE, 6"	⑥ COMMERCIAL ENTRANCE DRIVEWAY HMA SURFACE COURSE, MIX "D", N50, 2" HMA BASE COURSE, 8"
①A HMA ASPHALT PAVT (FULL-DEPTH), 8 1/4" HMA SURFACE COURSE, MIX "D", N70, 2" HMA BINDER COURSE, IL-19, N70, 6 1/4" N. RIDGEFIELD*	③A LILY POND RESURFACING HMA SURFACE COURSE, MIX "D", N70, 2" LEV BIND MM N70 3/4" & VARIES	④A HMA SURFACE COURSE, MIX "D", N70, 2" LEV BIND MM N70 3/4" & VARIES HMA BASE COURSE WIDENING, 7"	⑥A FIELD ENTRANCE DRIVEWAY HMA SURFACE COURSE, MIX "D", N50, 2" AGGREGATE BASE COURSE, TYPE B 8"	⑦ HMA SHOULDERS, 8"	⑧ PCC SHOULDERS, 9 3/4"
①B HMA ASPHALT PAVT (FULL DEPTH), 9" HMA SURFACE COURSE, MIX "D", N70, 2" HMA BINDER COURSE, IL-19, N70, 7"	⑤ US ROUTE 14 RESURFACING ①C HMA SURFACE COURSE, MIX "D", N70 1 3/4" POLY LEV BIND MM IL-4.75 N50 3/4"	⑥ HMA SURFACE COURSE, MIX "D", N70, 2" LEV BIND MM N70 3/4" & VARIES HMA BASE COURSE, 6"	⑦ HMA SHOULDERS, 8"	⑨ CONCRETE MEDIAN SURFACE 4"	⑩ AGGREGATE SHOULDERS, TYPE B 6"
			⑪ LANDSCAPE MEDIAN (SEE LANSCAPING PLANS)	⑫ AGGREGATE SHOULDERS, TYPE B 8"	⑬ AGGREGATE WEDGE SHOULDER, TYPE B



FILE NAME =	USER NAME = HECHTBR	DESIGNED -	REVISED -
#FILE#		DRAWN - RJS	REVISED -
PLOT SCALE = *SCALE*		CHECKED - BRH	REVISED -
PLOT DATE = *DATE*		DATE - 11/01/13	REVISED -

**STATE OF ILLINOIS**  
**DEPARTMENT OF TRANSPORTATION**  
 U.S. ROUTE 14

<b>PROPOSED ROADWAY</b>		F.A.P. RTE.	SECTION	COUNTY	TOTAL SHEETS	SHEET NO.
<b>U.S. ROUTE 14 PLAN &amp; PROFILE</b>		305	27R-2	MCHENRY	673	65
<b>STA. 432+50 TO STA. 446+00</b>		CONTRACT NO. 62268				

SCALE: HORIZ. 1"=50'    VERT. 1"=5'    STA. TO STA.

FED. ROAD DIST. NO. 1 ILLINOIS FED. AID PROJECT