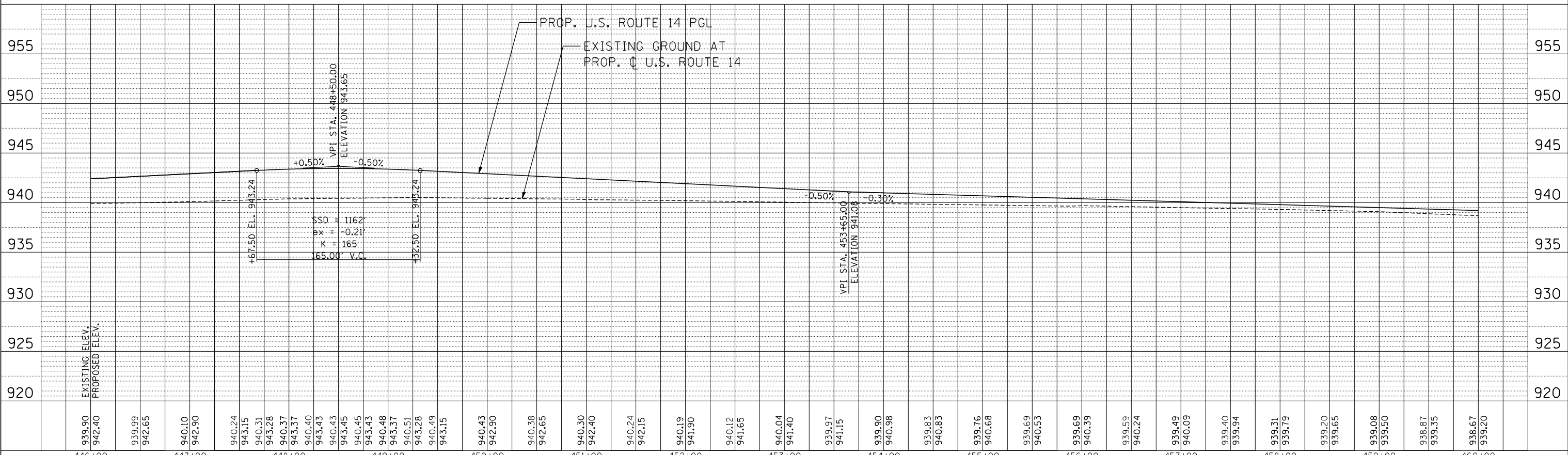
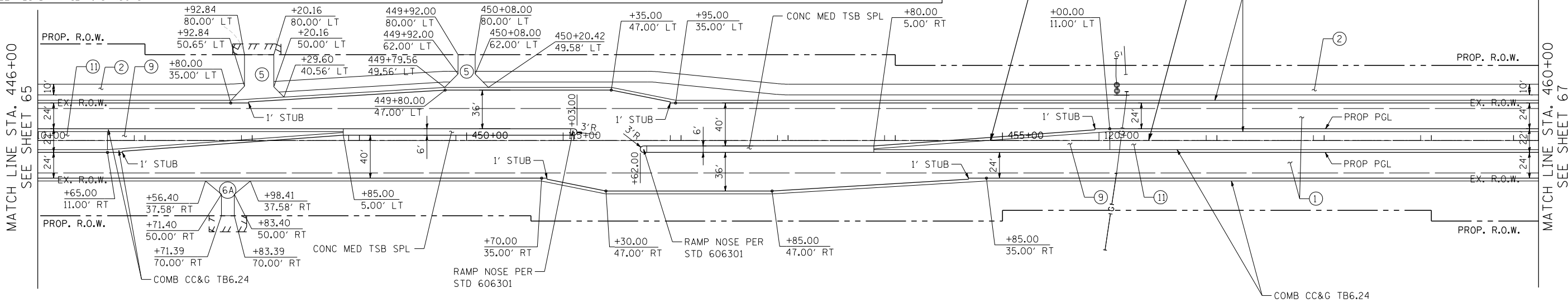


PROPOSED LEGEND • PAVEMENT DESIGN INCLUDES AGGREGATE SUBGRADE IMPROVEMENT, 12" (SEE TYPICAL SECTIONS)

- ① US ROUTE 14\*  
P.C.C. PAVEMENT 9 3/4" JOINTED  
STABILIZED SUBBASE (HMA) 4 1/2"
- ② MULTI-USE PATH  
HMA SURFACE COURSE, MIX "D", N50, 1 1/2"  
HMA BINDER COURSE, IL-19, N50, 2 1/2"  
AGGREGATE BASE COURSE, TYPE B 10"  
(SEE NOTE 14 & 26 SHEET 3)
- ③ N. RIDGEFIELD RESURFACING  
HMA SURFACE COURSE, MIX "D", N70, 2"  
LEV BIND MM N70 3/4" & VARIES
- ④ LILY POND WIDENING\*  
HMA SURFACE COURSE, MIX "D", N70, 2"  
LEV BIND MM N70 3/4" & VARIES  
HMA BASE COURSE WIDENING, 6 1/4"  
N. RIDGEFIELD WIDENING\*
- ⑤ FIELD ENTRANCE DRIVEWAY  
HMA SURFACE COURSE, MIX "D", N50, 2"  
AGGREGATE BASE COURSE, TYPE B 8"
- ⑥A HMA SHOULDERS, 8"
- ⑦ HMA SHOULDERS, 8"
- ⑧ PCC SHOULDERS, 9 3/4"
- ⑨ CONCRETE MEDIAN SURFACE 4"
- ⑩ AGGREGATE SHOULDERS, TYPE B 6"
- ⑪ LANDSCAPE MEDIAN (SEE LANSCAPING PLANS)
- ⑫ AGGREGATE SHOULDERS, TYPE B 8"
- ⑬ AGGREGATE WEDGE SHOULDER, TYPE B
- ①A HMA ASPHALT PAVT (FULL-DEPTH), 8 1/4"  
HMA SURFACE COURSE, MIX "D", N70, 2"  
HMA BINDER COURSE, IL-19, N70, 6 1/4"
- ①B N. RIDGEFIELD\*  
HMA ASPHALT PAVT (FULL DEPTH), 9"  
HMA SURFACE COURSE, MIX "D", N70, 2"  
HMA BINDER COURSE, IL-19, N70, 7"
- ③A LILY POND RESURFACING  
HMA SURFACE COURSE, MIX "D", N70, 2"  
LEV BIND MM N70 3/4" & VARIES
- ⑤ US ROUTE 14 RESURFACING  
HMA SURFACE COURSE, MIX "D", N70 1 3/4"  
POLY LEV BIND MM IL-4.75 N50 3/4"



PLAN	SURVEYED	BY	DATE
	PLOTTED		
	CHECKED		
	AT		
	FILE NAME		
	NO.		

PROFILE	SURVEYED	BY	DATE
	PLOTTED		
	CHECKED		
	AT		
	FILE NAME		
	NO.		

11-07-2013 16:29:57 HECHTBR  
 T:\DOCUMENT\13134290\CIVIL\UDN\PR0813.DGN

FILE NAME =	USER NAME = HECHTBR	DESIGNED -	REVISED -	<b>STATE OF ILLINOIS</b> <b>DEPARTMENT OF TRANSPORTATION</b> U.S. ROUTE 14	<b>PROPOSED ROADWAY</b> <b>U.S. ROUTE 14 PLAN &amp; PROFILE</b> <b>STA. 446+00 TO STA. 460+00</b>	F.A.P. RTE.	SECTION	COUNTY	TOTAL SHEETS	SHEET NO.	
#FILEL#		DRAWN - RJS	REVISED -			305	27R-2	MCHENRY	673	66	
PLOT SCALE = *SCALE*		CHECKED - BRH	REVISED -			CONTRACT NO. 62268					
PLOT DATE = *DATE*		DATE - 11/01/13	REVISED -			FED. ROAD DIST. NO. 1 ILLINOIS FED. AID PROJECT					

SCALE: HORIZ. 1"=50'      VERT. 1"=5'      STA.      TO STA.