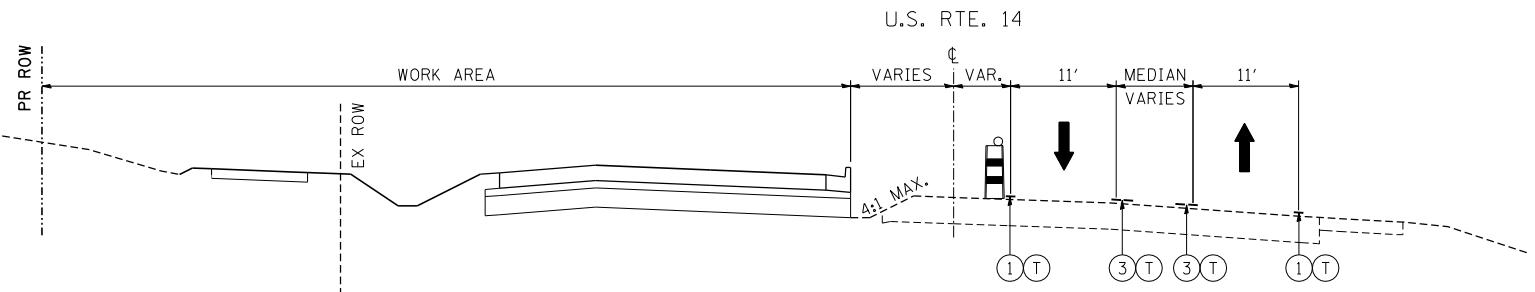
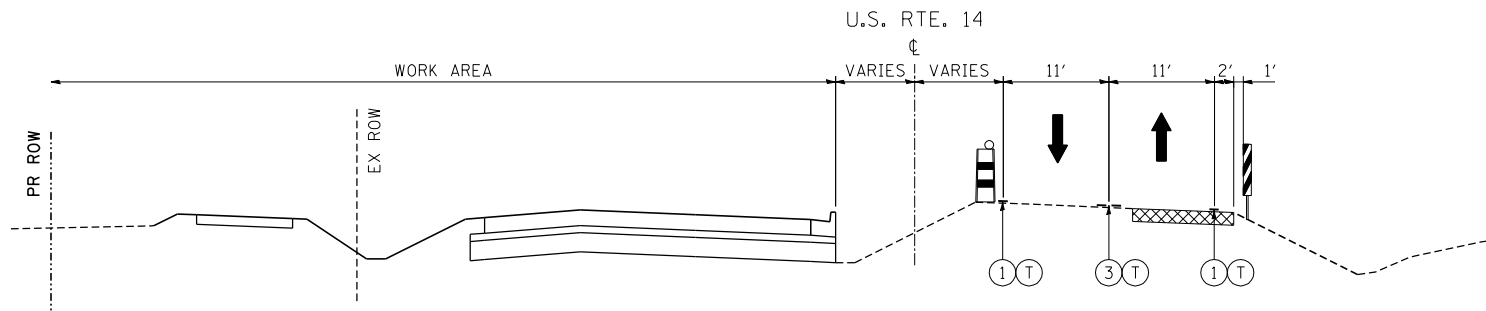


U.S. ROUTE 14  
STA. 327+00



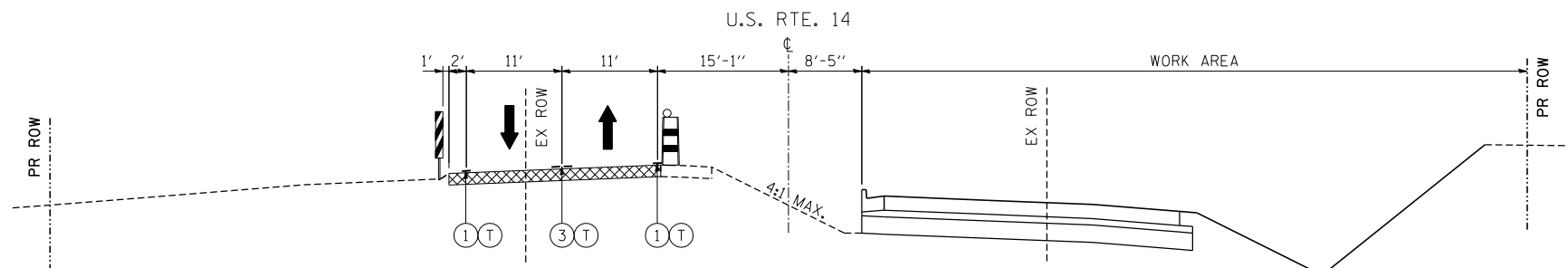
MOT STAGE 1.1 TYPICAL SECTION E-E

U.S. ROUTE 14  
STA. 335+00



MOT STAGE 1.1 TYPICAL SECTION F-F

U.S. ROUTE 14  
STA. 341+00



MOT STAGE 1.1 TYPICAL SECTION G-G

U.S. ROUTE 14  
STA. 405+00

**MAINTENANCE OF TRAFFIC LEGEND**

- TEMPORARY PAVEMENT (SEE SHT 83 FOR SECTION)
- TEMPORARY CONCRETE BARRIER
- TYPE II BARRICADE OR DRUM W/ TYPE C STEADY BURN BI-DIRECTIONAL LIGHT
- DOUBLE VERTICAL PANEL WITH TYPE C STEADY BURN BI-DIRECTIONAL LIGHT
- EXISTING TRAFFIC DIRECTION
- PROPOSED TRAFFIC DIRECTION
- ① PVT MK - LINE 4" WHITE
- ② PVT MK - LINE 4" YELLOW
- ③ PVT MK - DBL 4" YELLOW
- ④ PVT MK - LINE 6" WHITE
- ⑤ PVT MK - LINE 8" WHITE
- ⑥ EXISTING PAVEMENT MARKING
- (T) TEMP PVT MK
- (W) WET REF TEM TAPE T3

**STATE OF ILLINOIS  
DEPARTMENT OF TRANSPORTATION**  
U.S. ROUTE 14

**MOT TYPICAL SECTIONS  
U.S. ROUTE 14  
STAGE 1.1 - SHEET I**

FILE NAME =	USER NAME = HECHTBR	DESIGNED -	REVISED -
*FILEL#		DRAWN - JP	REVISED -
exp U.S. Services Inc. Chicago, IL	PLOT SCALE = *SCALE*	CHECKED - BRH	REVISED -
BUILDINGS-EARTH & ENVIRONMENT-ENERGY INDUSTRIAL-INFRASTRUCTURE-SUSTAINABILITY	PLOT DATE = *DATE*	DATE - 11/01/13	REVISED -

SCALE: N.T.S.	SHEET NO.	OF SHEETS	STA.	TO STA.
---------------	-----------	-----------	------	---------

F.A.P. RTE.	SECTION	COUNTY	TOTAL SHEETS	SHEET NO.
305	27R-2	MCHENRY	673	84
FED. ROAD DIST. NO. 1 ILLINOIS FED. AID PROJECT			CONTRACT NO. 62268	

\NTSC00\31\DON\NTTB006\JJ\DON\GEN00477.DGN  
 T:\DOCUMENT\1934\9901\CIVIL\DON\TSC00\_38.DGN  
 11-07-2013 16:25:29 HECHTBR