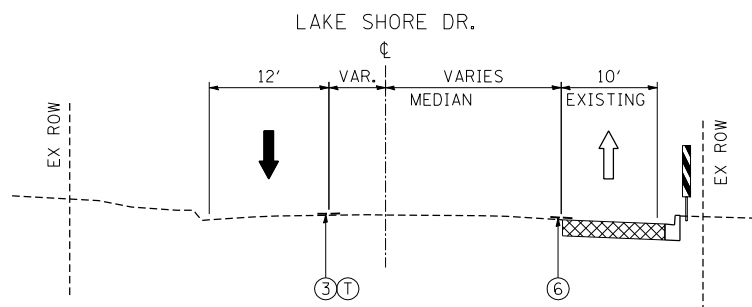


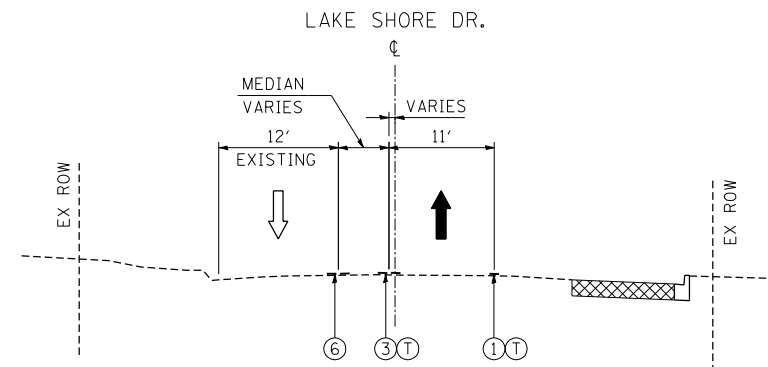
MOT STAGE 1.1 SUBSTAGE B-1 TYPICAL SECTION P-P

LAKE SHORE DRIVE  
STA. 43+50



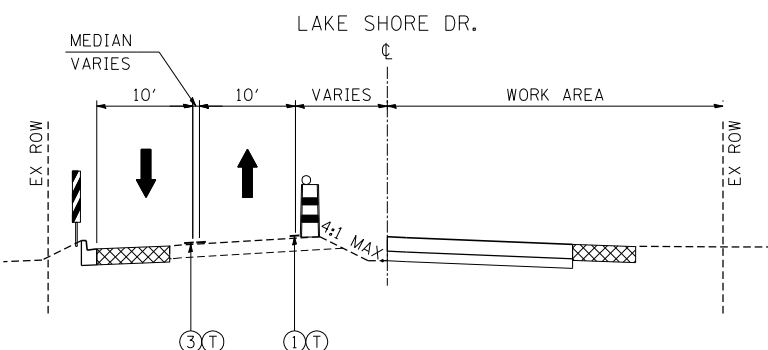
MOT STAGE 1.1 SUBSTAGE B-2 TYPICAL SECTION R-R

LAKE SHORE DRIVE  
STA. 43+50



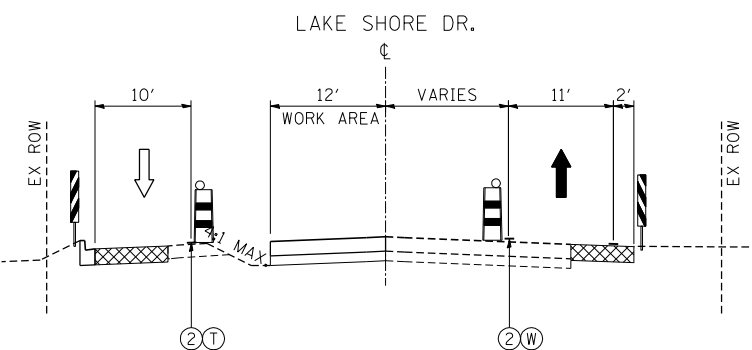
MOT STAGE 1.1 SUBSTAGE B-3 TYPICAL SECTION T-T

LAKE SHORE DRIVE  
STA. 43+50



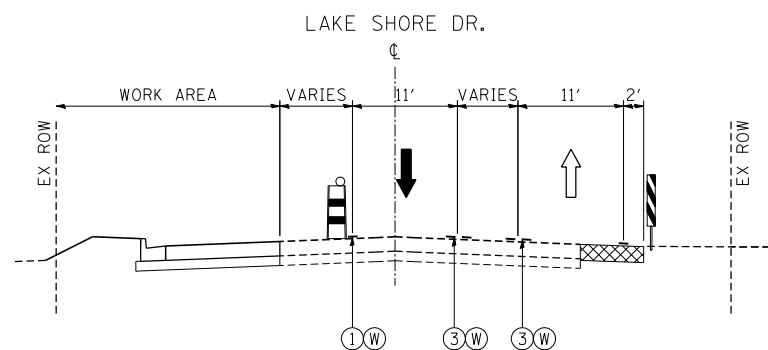
MOT STAGE 1.1 SUBSTAGE B-1 TYPICAL SECTION Q-Q

LAKE SHORE DRIVE  
STA. 46+50



MOT STAGE 1.1 SUBSTAGE B-2 TYPICAL SECTION S-S

LAKE SHORE DRIVE  
STA. 46+50



MOT STAGE 1.1 SUBSTAGE B-3 TYPICAL SECTION U-U

LAKE SHORE DRIVE  
STA. 46+50

**MAINTENANCE OF TRAFFIC LEGEND**

- TEMPORARY PAVEMENT (SEE SHT 83 FOR SECTION)
- DOUBLE VERTICAL PANEL WITH TYPE C STEADY BURN BI-DIRECTIONAL LIGHT
- TEMPORARY CONCRETE BARRIER
- TYPE II BARRICADE OR DRUM W/ TYPE C STEADY BURN BI-DIRECTIONAL LIGHT
- EXISTING TRAFFIC DIRECTION
- PROPOSED TRAFFIC DIRECTION

- ① PVT MK - LINE 4" WHITE
- ② PVT MK - LINE 4" YELLOW
- ③ PVT MK - DBL 4" YELLOW
- ④ PVT MK - LINE 6" WHITE
- ⑤ PVT MK - LINE 8" WHITE
- ⑥ EXISTING PAVEMENT MARKING
- Ⓣ TEMP PVT MK
- Ⓜ WET REF TEM TAPE T3

\NTSC00\31\DOCN\11\T18006\1\DOCN\GEN00477.DGN  
 11-07-2013 16:25:35  
 HECHTBR T:\DOCUMENT\1934\9901\CIVIL\DOCN\TSC00\_38.DGN

FILE NAME = *FILEL*	USER NAME = HECHTBR	DESIGNED -	REVISED -
exp U.S. Services Inc. Chicago, IL BUILDINGS-EARTH & ENVIRONMENT-ENERGY INDUSTRIAL-INFRASTRUCTURE-SUSTAINABILITY	PLOT SCALE = *SCALE*	DRAWN - JP	REVISED -
	PLOT DATE = *DATE*	CHECKED - BRH	REVISED -
		DATE - 11/01/13	REVISED -

**STATE OF ILLINOIS**  
**DEPARTMENT OF TRANSPORTATION**  
 U.S. ROUTE 14

<b>MOT TYPICAL SECTIONS</b>			
<b>LAKE SHORE DRIVE</b>			
<b>STAGE 1.1 SUBSTAGE B-1 TO B-3</b>			
SCALE: N.T.S.	SHEET NO.	OF SHEETS	STA. TO STA.

F.A.P. RTE.	SECTION	COUNTY	TOTAL SHEETS	SHEET NO.
305	27R-2	MCHENRY	673	87
FED. ROAD DIST. NO. 1 ILLINOIS FED. AID PROJECT			CONTRACT NO. 62268	