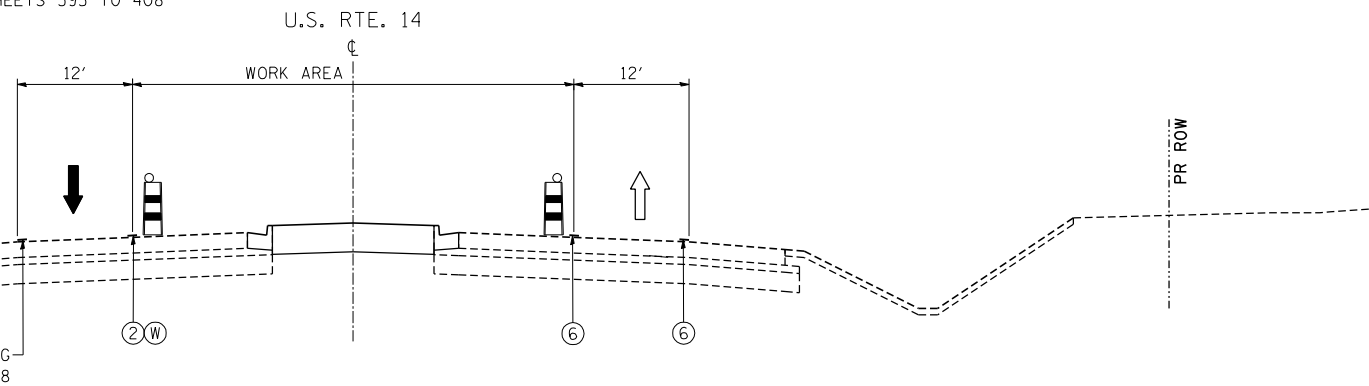


MOT STAGE 3 TYPICAL SECTION

U.S. ROUTE 14
STA. 359+00

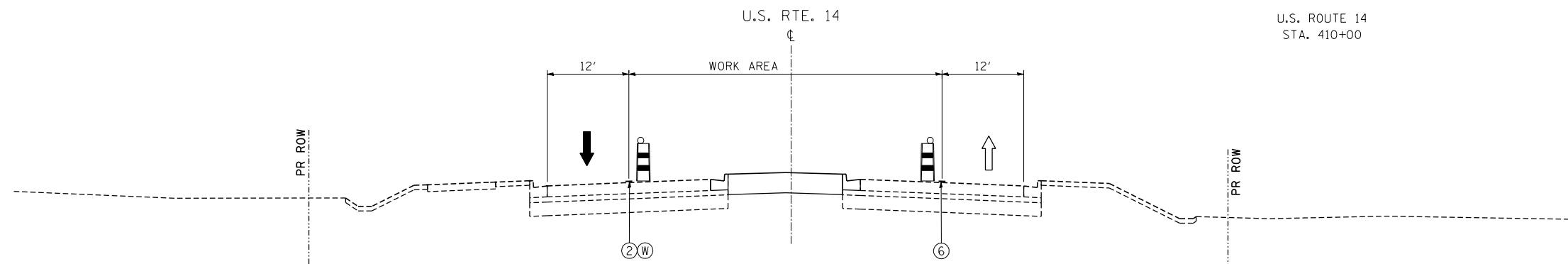
PERMANENT PAVEMENT MARKING
SEE SHEETS 395 TO 408



MOT STAGE 3 TYPICAL SECTION

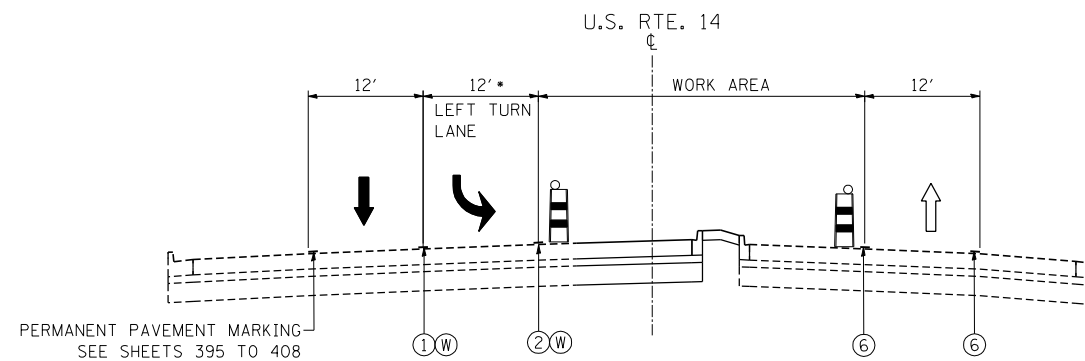
U.S. ROUTE 14
STA. 410+00

PERMANENT PAVEMENT MARKING
SEE SHEETS 395 TO 408



MOT STAGE 3 TYPICAL SECTION

U.S. ROUTE 14
STA. 456+00



MOT STAGE 3 TYPICAL SECTION LEFT TURN LANE CONSTRUCTION

WESTBOUND LEFT TURN LANE CONSTRUCTION SHOWN
* LEFT TURN LANE TAPER AND LENGTH SHALL MATCH PROPOSED LEFT TURN LANE TAPER AND LENGTH.

MAINTENANCE OF TRAFFIC LEGEND

- TEMPORARY PAVEMENT (SEE SHT 83 FOR SECTION)
- TEMPORARY CONCRETE BARRIER
- TYPE II BARRICADE OR DRUM W/ TYPE C STEADY BURN BI-DIRECTIONAL LIGHT
- DOUBLE VERTICAL PANEL WITH TYPE C STEADY BURN BI-DIRECTIONAL LIGHT
- EXISTING TRAFFIC DIRECTION
- PROPOSED TRAFFIC DIRECTION
- ① PVT MK - LINE 4" WHITE
- ② PVT MK - LINE 4" YELLOW
- ③ PVT MK - DBL 4" YELLOW
- ④ PVT MK - LINE 6" WHITE
- ⑤ PVT MK - LINE 8" WHITE
- ⑥ EXISTING PAVEMENT MARKING
- (T) TEMP PVT MK
- (W) WET REF TEM TAPE T3

\NTSC00\31.DGN, \NTT0006.LJ.DGN, \GEN00477.DGN, \HECHTBR T:\DOCUMENT\934\9901\CIVIL\DGN\TSC00_RU.DGN
 11-07-2013, 16:25:48

FILE NAME =
 #FILEL#

 exp U.S. Services Inc.
 Chicago, IL
 BUILDINGS-EARTH & ENVIRONMENT-ENERGY
 INDUSTRIAL-INFRASTRUCTURE-SUSTAINABILITY

USER NAME = HECHTBR	DESIGNED -	REVISED -
PLOT SCALE = *SCALE*	DRAWN - JP	REVISED -
PLOT DATE = *DATE*	CHECKED - BRH	REVISED -
	DATE - 11/01/13	REVISED -

STATE OF ILLINOIS
DEPARTMENT OF TRANSPORTATION
 U.S. ROUTE 14

MOT TYPICAL SECTIONS			
U.S. ROUTE 14			
STAGE 3			
SCALE: N.T.S.	SHEET NO.	OF SHEETS	STA. TO STA.

F.A.P. RTE.	SECTION	COUNTY	TOTAL SHEETS	SHEET NO.
305	27R-2	MCHENRY	673	93
CONTRACT NO. 62268				
FED. ROAD DIST. NO. 1 ILLINOIS FED. AID PROJECT				