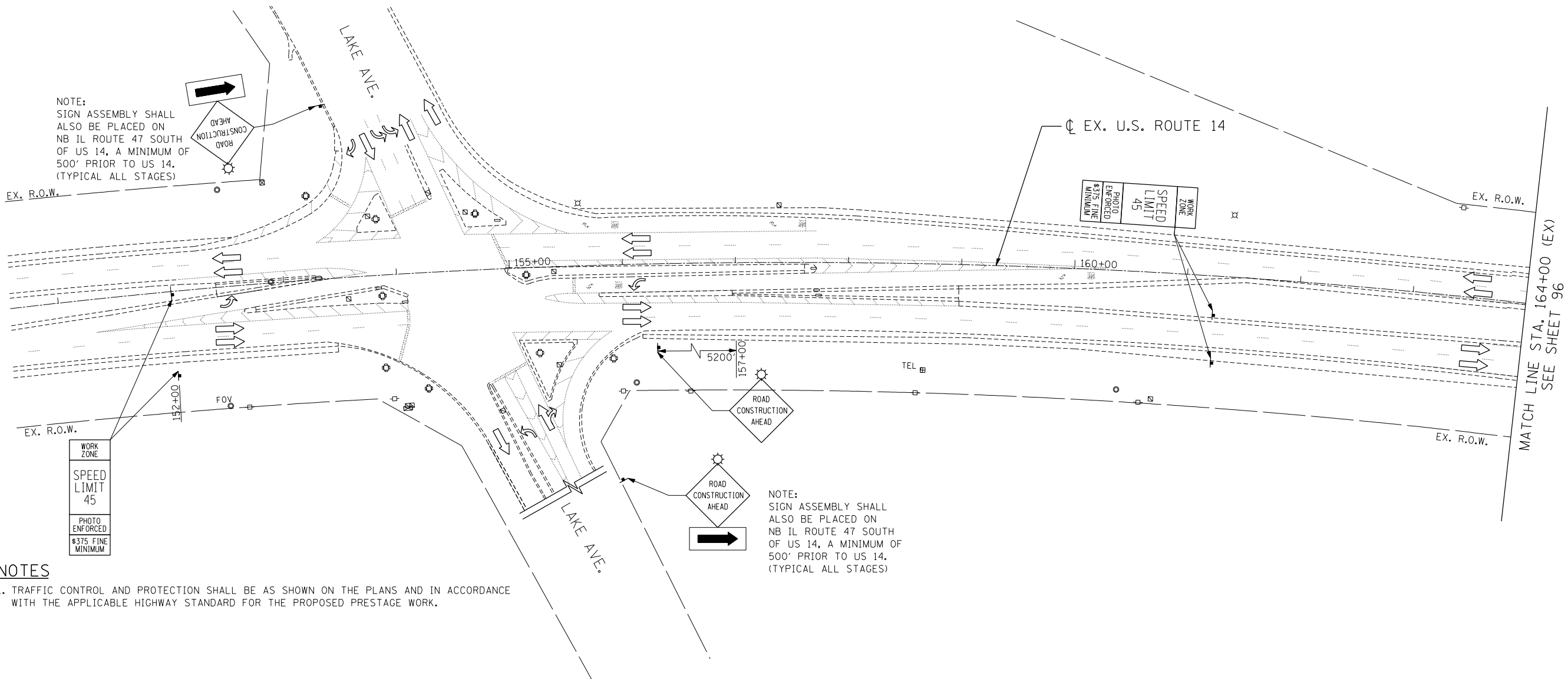


MAINTENANCE OF TRAFFIC LEGEND

	WORK AREA		EXISTING TRAFFIC DIRECTION		ARROW BOARD		PVT MK - LINE 4" WHITE		PVT MK - LINE 24" WHITE
	TEMPORARY PAVEMENT (CURRENT STAGE)		PROPOSED TRAFFIC DIRECTION		DOUBLE VERTICAL PANEL WITH TYPE C STEADY BURN LIGHT		PVT MK - LINE 4" YELLOW		PVT MK - LINE 8" WHITE
	TEMPORARY PAVEMENT (PREVIOUS STAGES)		BARRICADE, TYPE III, W/ TYPE A FLASHING LIGHTS		PROPOSED SIGN		PVT MK - DBL 4" YELLOW		TEMP PVT MK
	CONSTRUCTED PAVEMENT		TYPE II BARRICADE OR DRUM W/ TYPE C STEADY BURN BI-DIRECTIONAL LIGHT		TYPE II BARRICADE OR DRUM W/ TYPE A FLASHING LIGHT		PVT MK - LINE 6" WHITE		WET REF TEM TAPE T3
			TYPE B MONO-DIRECTIONAL FLASHING LIGHT				PVT MK - LINE 12"		
							PVT MK - LTRS & SYMB		



NOTE:
SIGN ASSEMBLY SHALL ALSO BE PLACED ON NB IL ROUTE 47 SOUTH OF US 14, A MINIMUM OF 500' PRIOR TO US 14. (TYPICAL ALL STAGES)

NOTE:
SIGN ASSEMBLY SHALL ALSO BE PLACED ON NB IL ROUTE 47 SOUTH OF US 14, A MINIMUM OF 500' PRIOR TO US 14. (TYPICAL ALL STAGES)

NOTES

1. TRAFFIC CONTROL AND PROTECTION SHALL BE AS SHOWN ON THE PLANS AND IN ACCORDANCE WITH THE APPLICABLE HIGHWAY STANDARD FOR THE PROPOSED PRESTAGE WORK.

T:\DOCUMENT\1934\9901\CIVIL\DCN\MO100.11.DGN
 HECHTBR
 11-07-2013 16:25:59
 exp U.S. Services Inc. Chicago, IL
 BUILDINGS-EARTH & ENVIRONMENT-ENERGY
 INDUSTRIAL-INFRASTRUCTURE-SUSTAINABILITY

FILE NAME = *FILEL*	USER NAME = HECHTBR	DESIGNED -	REVISED -	STATE OF ILLINOIS DEPARTMENT OF TRANSPORTATION U.S. ROUTE 14	MAINTENANCE OF TRAFFIC PRESTAGE STA. 152+00 (EX) TO STA. 164+00 (EX)			F.A.P. RTE.	SECTION	COUNTY	TOTAL SHEETS	SHEET NO.				
exp U.S. Services Inc. Chicago, IL BUILDINGS-EARTH & ENVIRONMENT-ENERGY INDUSTRIAL-INFRASTRUCTURE-SUSTAINABILITY	PLOT SCALE = *SCALE*	DRAWN - JP	REVISED -		SCALE: 1"=50'	SHEET NO.	OF	SHEETS	STA.	TO	STA.	305	27R-2	MCHENRY	673	95
PLOT DATE = *DATE*	DATE - 11/01/13	CHECKED - KA	REVISED -													
			REVISED -													
												CONTRACT NO. 62268		FED. ROAD DIST. NO. 1 ILLINOIS FED. AID PROJECT		