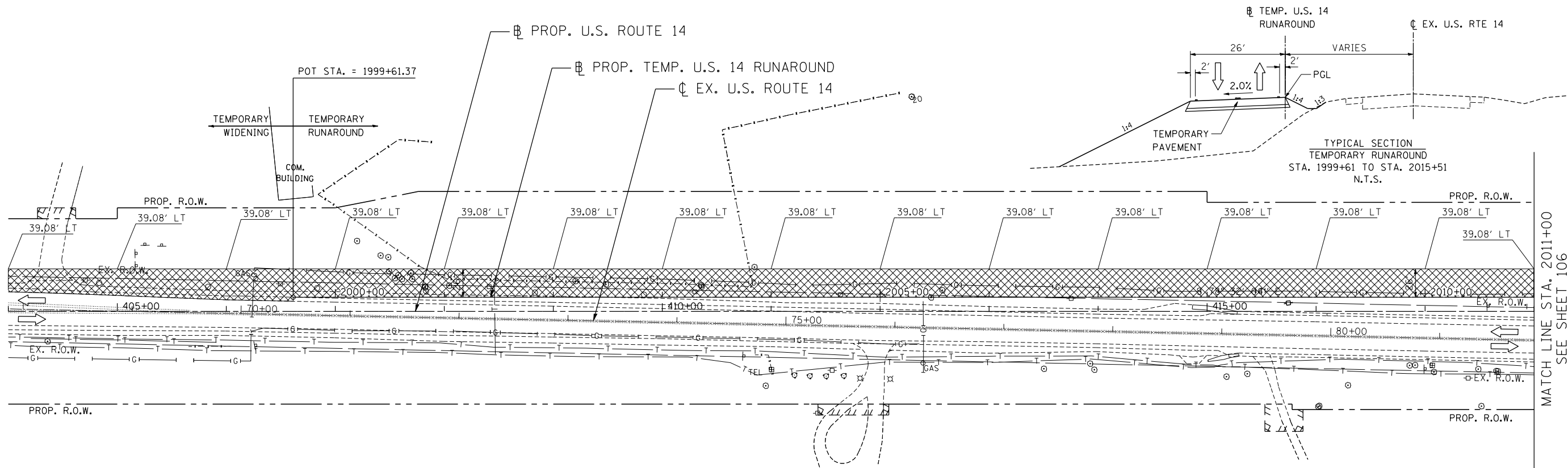


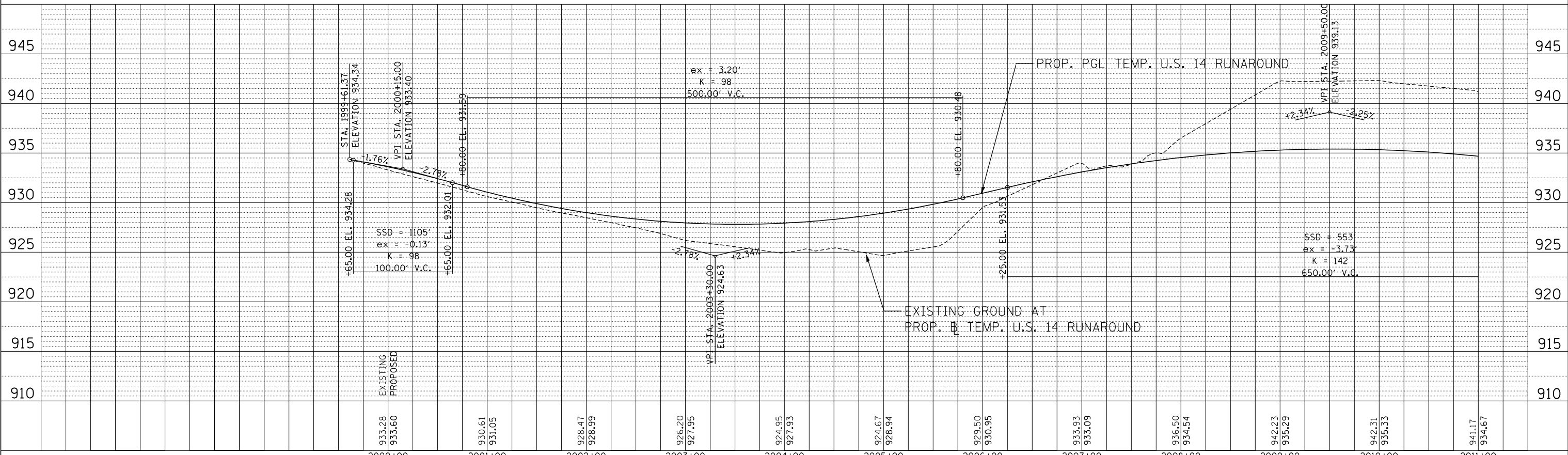
PLAN	SURVEYED	DATE
	PLOTTED	BY
	GRADES CHECKED	
	STRUCTURE NOTATIONS CHECKED	
	NOTE BOOK NO.	
	CHECKED AT	
	FILE NAME	

PROFILE	SURVEYED	DATE
	PLOTTED	BY
	GRADES CHECKED	
	STRUCTURE NOTATIONS CHECKED	
	NOTE BOOK NO.	
	CHECKED AT	
	FILE NAME	



**NOTE**

1. US RTE 14 TEMPORARY PAVEMENT OFFSETS ARE GIVEN TO THE EDGE OF TEMPORARY PAVEMENT SHOULDER FROM THE PROPOSED US RTE 14 ALIGNMENT AND ARE SHOWN AT 100' INTERVALS UNLESS OTHERWISE NOTED.



11-06-2013 15:54:11 HECHTBR

T:\DOCUMENT\13134398\CIVIL\UDN\PR08\_HA.DGN

FILE NAME =	USER NAME = HECHTBR	DESIGNED -	REVISED -	<b>STATE OF ILLINOIS</b> <b>DEPARTMENT OF TRANSPORTATION</b> U.S. ROUTE 14	<b>MAINTENANCE OF TRAFFIC</b> <b>PRESTAGE PLAN &amp; PROFILE</b> <b>STA. 404+00 TO STA. 418+00</b>	F.A.P. RTE.	SECTION	COUNTY	TOTAL SHEETS	SHEET NO.	
*FILE.L*		DRAWN - RJS	REVISED -			305	27R-2	MCHENRY	673	105	
exp U.S. Services Inc.		CHECKED - BRH	REVISED -			CONTRACT NO. 62268					
exp U.S. Services Inc.		DATE - 11/01/13	REVISED -			FED. ROAD DIST. NO. 1 ILLINOIS FED. AID PROJECT					
PLOT SCALE = *SCALE*		DATE		SCALE: HORIZ. 1"=50'		VERT. 1"=5'		STA. TO STA.			