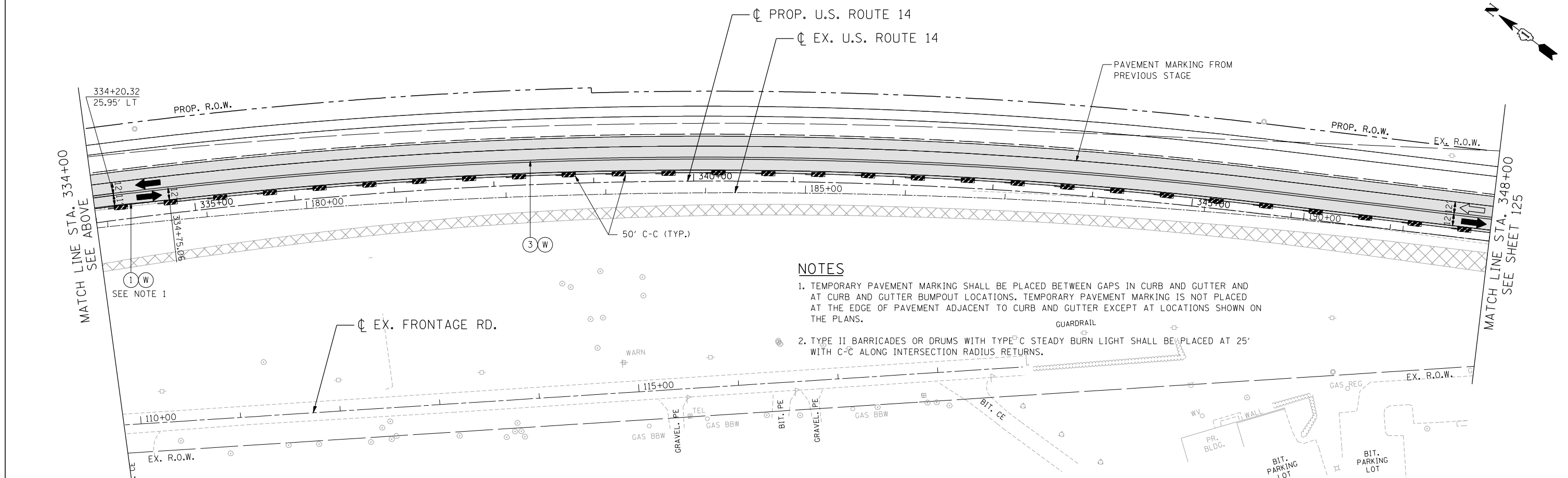


MAINTENANCE OF TRAFFIC LEGEND

	WORK AREA		EXISTING TRAFFIC DIRECTION		ARROW BOARD		PVT MK - LINE 4" WHITE		PVT MK - LINE 24" WHITE
	TEMPORARY PAVEMENT (CURRENT STAGE)		PROPOSED TRAFFIC DIRECTION		DOUBLE VERTICAL PANEL WITH TYPE C STEADY BURN LIGHT		PVT MK - LINE 4" YELLOW		PVT MK - LINE 8" WHITE
	TEMPORARY PAVEMENT (PREVIOUS STAGES)				PROPOSED SIGN		PVT MK - DBL 4" YELLOW		TEMP PVT MK
	CONSTRUCTED PAVEMENT				TYPE II BARRICADE OR DRUM W/ TYPE C STEADY BURN BI-DIRECTIONAL LIGHT		PVT MK - LINE 6" WHITE		WET REF TEM TAPE T3
					TYPE A FLASHING LIGHT		PVT MK - LINE 12"		
					TYPE A FLASHING LIGHT		PVT MK - LTRS & SYMB		



NOTES

- TEMPORARY PAVEMENT MARKING SHALL BE PLACED BETWEEN GAPS IN CURB AND GUTTER AND AT CURB AND GUTTER BUMPOUT LOCATIONS. TEMPORARY PAVEMENT MARKING IS NOT PLACED AT THE EDGE OF PAVEMENT ADJACENT TO CURB AND GUTTER EXCEPT AT LOCATIONS SHOWN ON THE PLANS.
- TYPE II BARRICADES OR DRUMS WITH TYPE C STEADY BURN LIGHT SHALL BE PLACED AT 25' WITH C-C ALONG INTERSECTION RADIUS RETURNS.

FILE NAME = ... USER NAME = HECHTBR ... DESIGNED - ... REVISED - ... DRAWN - JP ... REVISED - ... CHECKED - KA ... REVISED - ... DATE - 11/01/13 ... REVISED - ...

**STATE OF ILLINOIS
DEPARTMENT OF TRANSPORTATION
U.S. ROUTE 14**

**MAINTENANCE OF TRAFFIC
STAGE 1.2
STA. 164+00 (EX) TO STA. 348+00**

SCALE: 1"=50'

SHEET NO. OF SHEETS STA. TO STA.

F.A.P. RTE.	SECTION	COUNTY	TOTAL SHEETS	SHEET NO.
305	27R-2	MCHENRY	673	124
FED. ROAD DIST. NO. 1 ILLINOIS FED. AID PROJECT			CONTRACT NO. 62268	