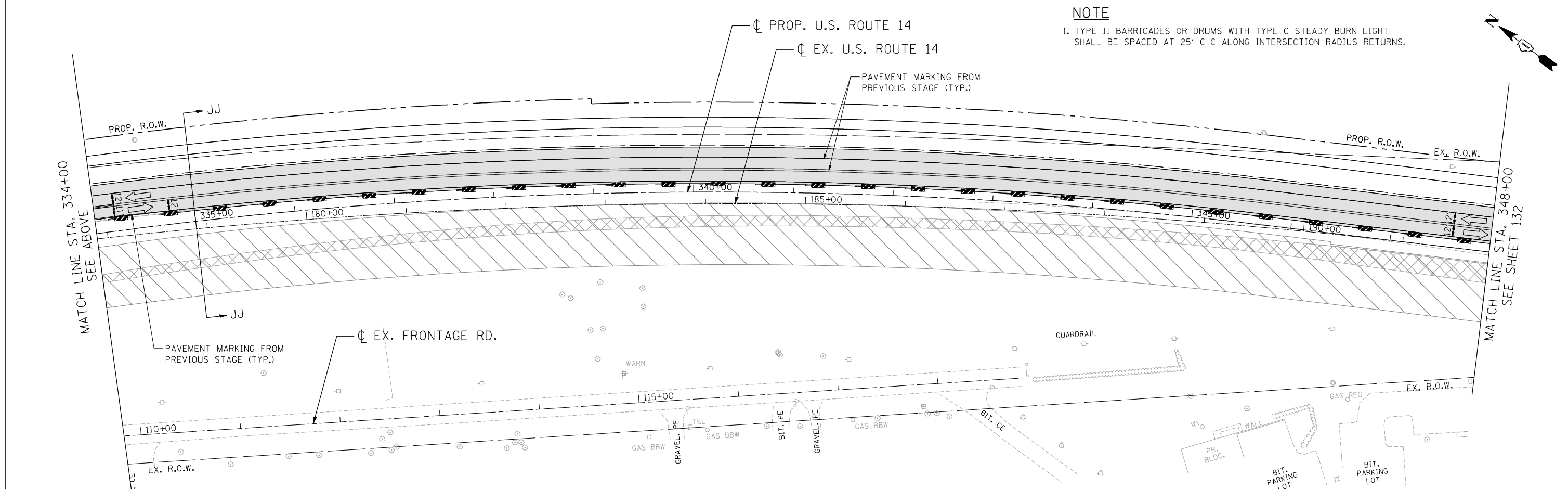


**MAINTENANCE OF TRAFFIC LEGEND**

- |  |                                      |  |  |  |   |   |                         |   |                         |
|--|--------------------------------------|--|--|--|---|---|-------------------------|---|-------------------------|
|  | WORK AREA                            |  | EXISTING TRAFFIC DIRECTION   |  | ARROW BOARD   | ① | PVT MK - LINE 4" WHITE  | ⑦ | PVT MK - LINE 24" WHITE |
|  | TEMPORARY PAVEMENT (CURRENT STAGE)   |  | PROPOSED TRAFFIC DIRECTION   |  | DOUBLE VERTICAL PANEL WITH TYPE C STEADY BURN LIGHT | ② | PVT MK - LINE 4" YELLOW | ⑧ | PVT MK - LINE 8" WHITE  |
|  | TEMPORARY PAVEMENT (PREVIOUS STAGES) |  | BARRICADE, TYPE III, W/ TYPE A FLASHING LIGHTS                       |  | PROPOSED SIGN                                       | ③ | PVT MK - DBL 4" YELLOW  | ⑨ | TEMP PVT MK             |
|  | CONSTRUCTED PAVEMENT                 |  | TYPE II BARRICADE OR DRUM W/ TYPE C STEADY BURN BI-DIRECTIONAL LIGHT |  | TYPE II BARRICADE OR DRUM W/ TYPE A FLASHING LIGHT  | ④ | PVT MK - LINE 6" WHITE  | ⑩ | WET REF TEM TAPE T3     |
|  |                                      |  | TYPE B MONO-DIRECTIONAL FLASHING LIGHT                               |  | TYPE II BARRICADE OR DRUM W/ TYPE A FLASHING LIGHT  | ⑤ | PVT MK - LINE 12"       |   |                         |
|  |                                      |  |  |  |   | ⑥ | PVT MK - LTRS & SYMB    |   |                         |

**NOTE**

1. TYPE II BARRICADES OR DRUMS WITH TYPE C STEADY BURN LIGHT SHALL BE SPACED AT 25' C-C ALONG INTERSECTION RADIUS RETURNS.



FILE NAME = ... USER NAME = HECHTBR ... DESIGNED - ... REVISED - ... DRAWN - JP ... REVISED - ... CHECKED - KA ... REVISED - ... DATE - 11/01/13 ... REVISED - ...

|                       |  |                     |  |                          |  |                        |  |  |  |  |  |   |  |                                  |  |                    |  |                  |  |   |  |                     |  |                  |  |
|-----------------------|--|---------------------|--|--------------------------|--|------------------------|--|--|--|--|--|---|--|----------------------------------|--|--------------------|--|------------------|--|---|--|---------------------|--|------------------|--|
| FILE NAME =<br>#FILE# |  | USER NAME = HECHTBR |  | DESIGNED -<br>DRAWN - JP |  | REVISED -<br>REVISED - |  | <b>STATE OF ILLINOIS</b><br><b>DEPARTMENT OF TRANSPORTATION</b><br>U.S. ROUTE 14 |  |  |  | <b>MAINTENANCE OF TRAFFIC</b><br><b>STAGE 2.1</b><br><b>STA. 164+00 (EX) TO STA. 348+00</b> |  |                                  |  | F.A.P. RTE.<br>305 |  | SECTION<br>27R-2 |  | COUNTY<br>MCHENRY                               |  | TOTAL SHEETS<br>673 |  | SHEET NO.<br>131 |  |
| PLOT SCALE = #SCALE#  |  | PLOT DATE = #DATE#  |  | CHECKED - KA             |  | REVISED -              |  |  |  |  |  | SCALE: 1"=50'   |  | SHEET NO. OF SHEETS STA. TO STA. |  | CONTRACT NO. 62268 |  |                  |  | FED. ROAD DIST. NO. 1 ILLINOIS FED. AID PROJECT |  |                     |  |                  |  |