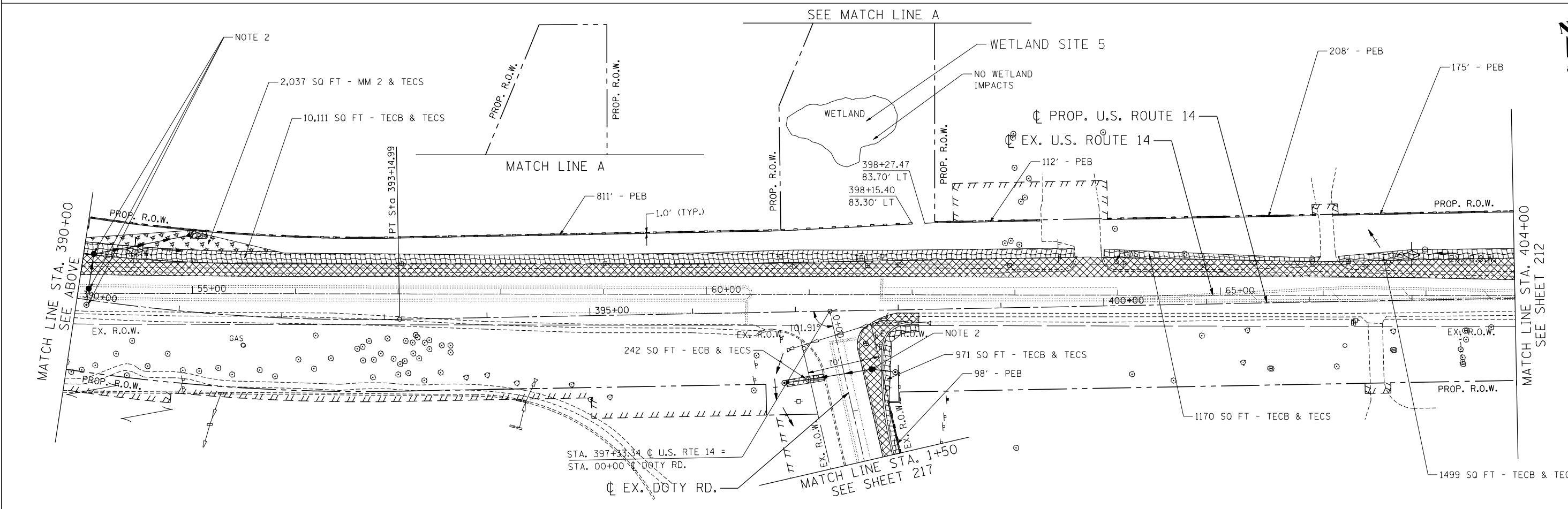
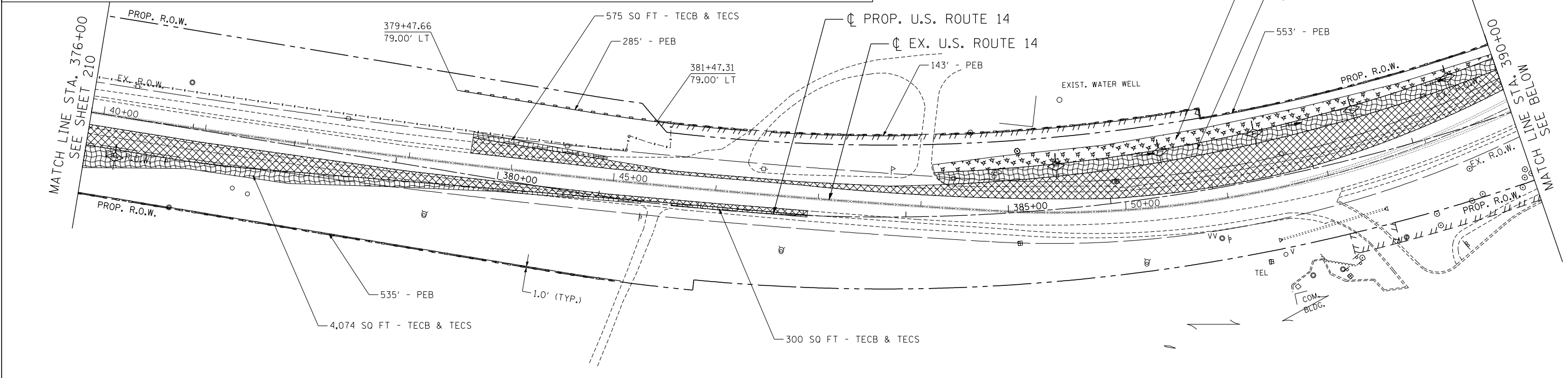
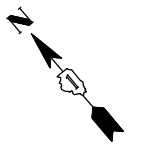


**EROSION CONTROL LEGEND**

|  |                                 |  |   |  |  |
|--|---------------------------------|--|---|--|--|
|  | INLET FILTER                    |  | TEMPORARY EROSION CONTROL BLANKET (TECB) & TEMPORARY EROSION CONTROL SEEDING (TECS) |  | PROPOSED PAVEMENT                            |
|  | TEMPORARY DITCH CHECK           |  | MULCH, METHOD 2 (MM 2) & TEMPORARY EROSION CONTROL SEEDING (TECS)                   |  | INLET AND PIPE PROTECTION                    |
|  | PERIMETER EROSION BARRIER (PEB) |  | EROSION CONTROL MEASURES (TECB, MM 2 AND TECS) PLACED IN PREVIOUS STAGES            |  | TEMPORARY PAVEMENT PLACED IN PREVIOUS STAGES |
|  | TEMPORARY PAVEMENT              |  |   |  |  |

**NOTES:**

1. THE PIPES AND STRUCTURES SHOWN ARE PROPOSED, UNLESS OTHERWISE CALLED AS TEMPORARY. SEE PROPOSED DRAINAGE PLANS FOR PROPOSED PIPE AND STRUCTURE INFORMATION.
2. SEE NOTE 2 ON SHEET 209.



FILE NAME = \\exp\p00815\15.DGN, USER = HECHTBR, DESIGNED - MRK, REVISED - TKL, CHECKED - TKL, DATE - 11/01/13, PLOT SCALE = 1"=50', PLOT DATE = 11/01/13, STATE OF ILLINOIS DEPARTMENT OF TRANSPORTATION, U.S. ROUTE 14, STA. 376+00 TO STA. 404+00, EROSION CONTROL PRESTAGE, CONTRACT NO. 62268, SECTION 27R-2, COUNTY MCHENRY, TOTAL SHEETS 673, SHEET NO. 211, FED. ROAD DIST. NO. 1 ILLINOIS FED. AID PROJECT

|   |  |   |  |
|---|--|---|--|
| FILE NAME = \\exp\p00815\15.DGN, USER = HECHTBR, DESIGNED - MRK, REVISED - TKL, CHECKED - TKL, DATE - 11/01/13, PLOT SCALE = 1"=50', PLOT DATE = 11/01/13, STATE OF ILLINOIS DEPARTMENT OF TRANSPORTATION, U.S. ROUTE 14, STA. 376+00 TO STA. 404+00, EROSION CONTROL PRESTAGE, CONTRACT NO. 62268, SECTION 27R-2, COUNTY MCHENRY, TOTAL SHEETS 673, SHEET NO. 211, FED. ROAD DIST. NO. 1 ILLINOIS FED. AID PROJECT | STATE OF ILLINOIS<br>DEPARTMENT OF TRANSPORTATION<br>U.S. ROUTE 14 | EROSION CONTROL<br>PRESTAGE<br>STA. 376+00 TO STA. 404+00 | F.A.P. RTE. 305, SECTION 27R-2, COUNTY MCHENRY, TOTAL SHEETS 673, SHEET NO. 211, CONTRACT NO. 62268, FED. ROAD DIST. NO. 1 ILLINOIS FED. AID PROJECT |
|---|--|---|--|