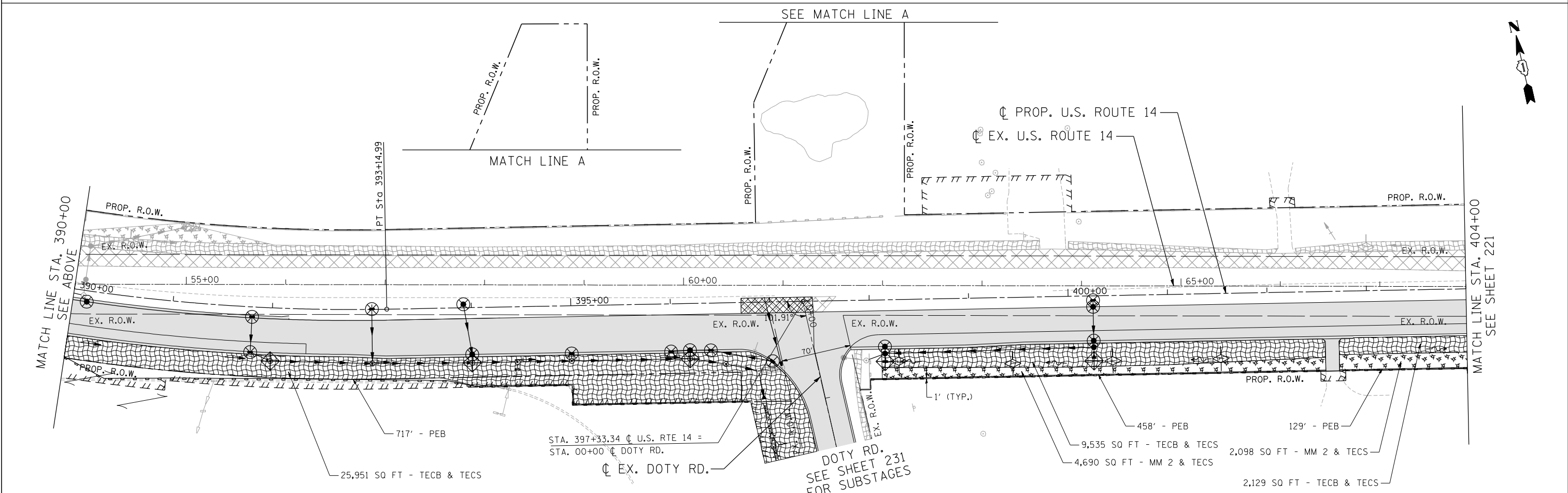
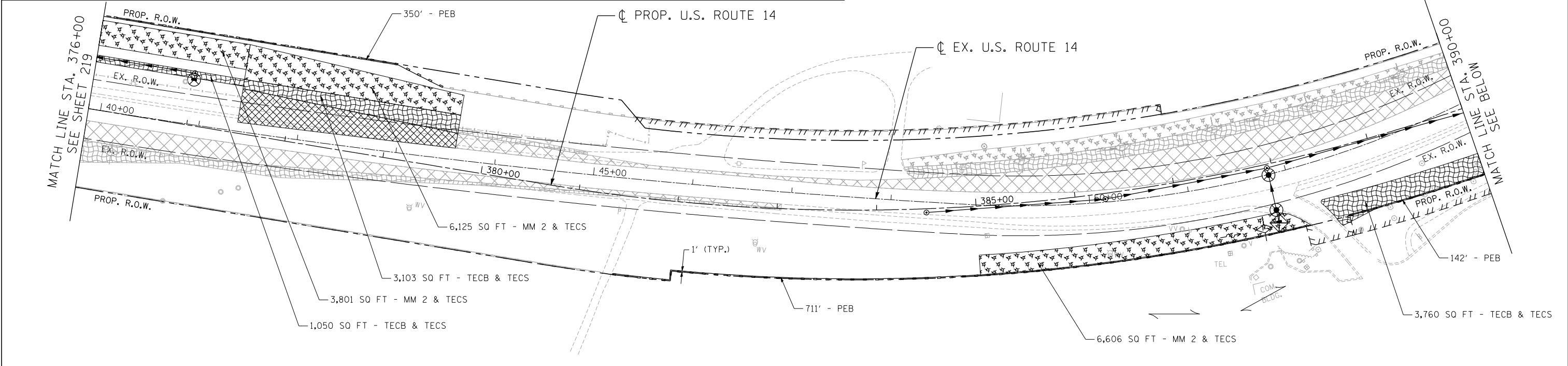
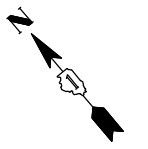


**EROSION CONTROL LEGEND**

	INLET FILTER		TEMPORARY EROSION CONTROL BLANKET (TECB) & TEMPORARY EROSION CONTROL SEEDING (TECS)		PROPOSED PAVEMENT
	TEMPORARY DITCH CHECK		MULCH, METHOD 2 (MM 2) & TEMPORARY EROSION CONTROL SEEDING (TECS)		INLET AND PIPE PROTECTION
	PERIMETER EROSION BARRIER (PEB)		EROSION CONTROL MEASURES (TECB, MM 2 AND TECS) PLACED IN PREVIOUS STAGES		TEMPORARY PAVEMENT PLACED IN PREVIOUS STAGES
	TEMPORARY PAVEMENT				

NOTE: THE PIPES AND STRUCTURES SHOWN ARE PROPOSED, UNLESS OTHERWISE CALLED AS TEMPORARY. SEE PROPOSED DRAINAGE PLANS FOR PROPOSED PIPE AND STRUCTURE INFORMATION.



FILE NAME = #FILEL#  
 USER NAME = HECHTBR  
 DESIGNED -  
 DRAWN - MRK  
 CHECKED - TKL  
 DATE - 11/01/13  
 REVISED -  
 REVISED -  
 REVISED -  
 REVISED -  
 STATE OF ILLINOIS  
 DEPARTMENT OF TRANSPORTATION  
 U.S. ROUTE 14  
 STA. 376+00 TO STA. 404+00  
 SCALE: 1"=50'  
 SHEET NO. OF SHEETS STA. TO STA.  
 F.A.P. RTE. SECTION COUNTY TOTAL SHEETS SHEET NO.  
 305 27R-2 MCHENRY 673 220  
 FED. ROAD DIST. NO. 1 ILLINOIS FED. AID PROJECT CONTRACT NO. 62268

FILE NAME = #FILEL#	USER NAME = HECHTBR	DESIGNED -	REVISED -	<b>STATE OF ILLINOIS</b> <b>DEPARTMENT OF TRANSPORTATION</b> U.S. ROUTE 14 <b>EROSION CONTROL</b> <b>STAGE 1.1</b> <b>STA. 376+00 TO STA. 404+00</b>	F.A.P. RTE.	SECTION	COUNTY	TOTAL SHEETS	SHEET NO.
exp U.S. Services Inc. Chicago, IL	PLOT SCALE = #SCALE#	DRAWN - MRK	REVISED -		305	27R-2	MCHENRY	673	220
11-06-2013 16:11:48	PLOT DATE = #DATE#	CHECKED - TKL	REVISED -		CONTRACT NO. 62268				
		DATE - 11/01/13	REVISED -		FED. ROAD DIST. NO. 1 ILLINOIS FED. AID PROJECT				