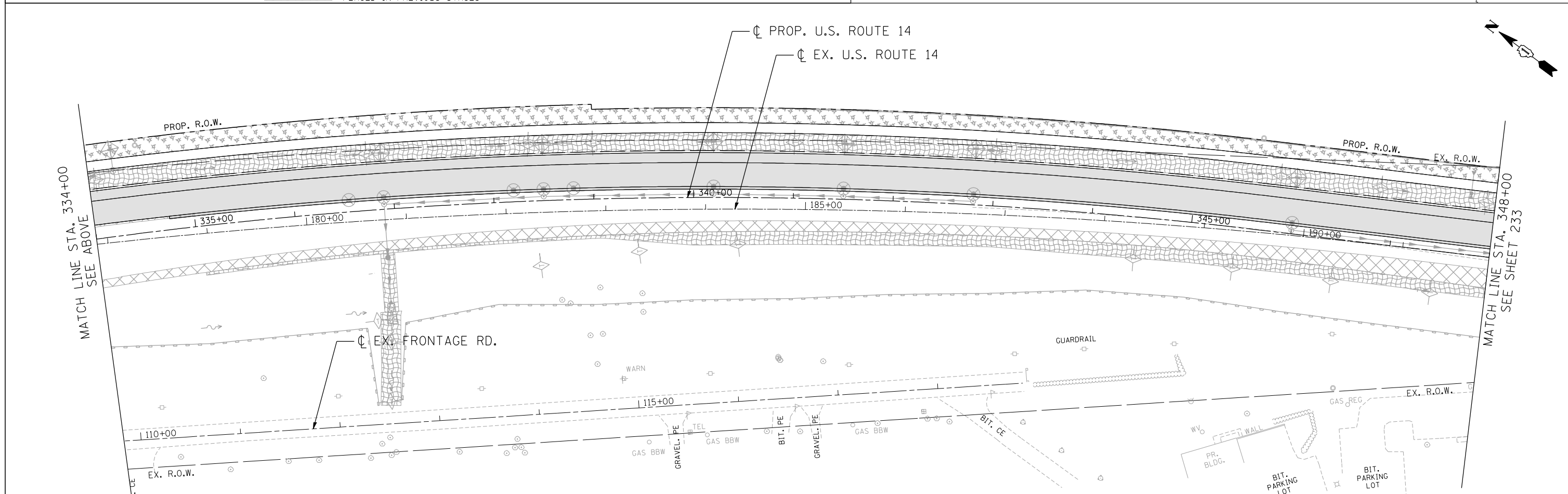


EROSION CONTROL LEGEND

	INLET FILTER		TEMPORARY EROSION CONTROL BLANKET (TECB) & TEMPORARY EROSION CONTROL SEEDING (TECS)		PROPOSED PAVEMENT
	TEMPORARY DITCH CHECK		MULCH, METHOD 2 (MM 2) & TEMPORARY EROSION CONTROL SEEDING (TECS)		INLET AND PIPE PROTECTION
	PERIMETER EROSION BARRIER (PEB)		EROSION CONTROL MEASURES (TECB, MM 2 AND TECS) PLACED IN PREVIOUS STAGES		TEMPORARY PAVEMENT PLACED IN PREVIOUS STAGES
	TEMPORARY PAVEMENT				



FILE NAME = ... USER NAME = HECHTBR ... DESIGNED - ... REVISED - ... DRAWN - MRK ... REVISED - ... CHECKED - TKL ... REVISED - ... DATE - 11/01/13 ... REVISED - ...

exp U.S. Services Inc. BUILDINGS-EARTH & ENVIRONMENT-ENERGY INDUSTRIAL-INFRASTRUCTURE-SUSTAINABILITY		STATE OF ILLINOIS DEPARTMENT OF TRANSPORTATION U.S. ROUTE 14		EROSION CONTROL STAGE 1.2 STA. 164+00 (EX) TO STA. 348+00		F.A.P. RTE. 305 SECTION 27R-2 COUNTY MCHENRY TOTAL SHEETS 673 SHEET NO. 232 CONTRACT NO. 62268	
SCALE: 1"=50'		SHEET NO. OF SHEETS STA. TO STA.		FED. ROAD DIST. NO. 1 ILLINOIS FED. AID PROJECT			