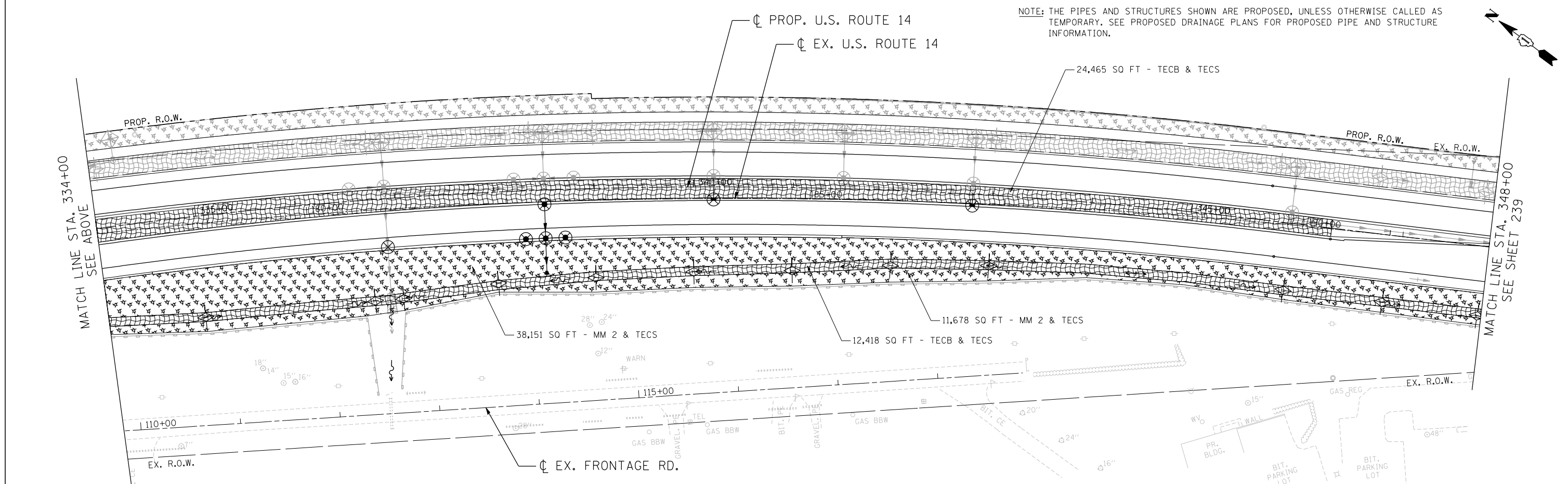


**EROSION CONTROL LEGEND**

- INLET FILTER
- TEMPORARY DITCH CHECK
- PERIMETER EROSION BARRIER (PEB)
- TEMPORARY PAVEMENT
- TEMPORARY EROSION CONTROL BLANKET (TECB) & TEMPORARY EROSION CONTROL SEEDING (TECS)
- MULCH, METHOD 2 (MM 2) & TEMPORARY EROSION CONTROL SEEDING (TECS)
- EROSION CONTROL MEASURES (TECB, MM 2 AND TECS) PLACED IN PREVIOUS STAGES
- PROPOSED PAVEMENT
- INLET AND PIPE PROTECTION
- TEMPORARY PAVEMENT PLACED IN PREVIOUS STAGES



NOTE: THE PIPES AND STRUCTURES SHOWN ARE PROPOSED, UNLESS OTHERWISE CALLED AS TEMPORARY. SEE PROPOSED DRAINAGE PLANS FOR PROPOSED PIPE AND STRUCTURE INFORMATION.

FILE NAME = ...  
 USER NAME = HECHTBR  
 DESIGNED - ...  
 DRAWN - MRK  
 CHECKED - TKL  
 DATE - 11/01/13  
 REVISED - ...  
 REVISED - ...  
 REVISED - ...  
 REVISED - ...  
 STATE OF ILLINOIS  
 DEPARTMENT OF TRANSPORTATION  
 U.S. ROUTE 14  
 EROSION CONTROL  
 STAGE 2.1  
 STA. 164+00 (EX) TO STA. 348+00  
 SCALE: 1"=50'  
 SHEET NO. OF SHEETS STA. TO STA.  
 F.A.P. RTE. SECTION COUNTY TOTAL SHEETS SHEET NO.  
 305 27R-2 MCHENRY 673 238  
 FED. ROAD DIST. NO. 1 ILLINOIS FED. AID PROJECT  
 CONTRACT NO. 62268

FILE NAME =	USER NAME = HECHTBR	DESIGNED -	REVISED -	<b>STATE OF ILLINOIS</b> <b>DEPARTMENT OF TRANSPORTATION</b> U.S. ROUTE 14	<b>EROSION CONTROL</b> <b>STAGE 2.1</b> <b>STA. 164+00 (EX) TO STA. 348+00</b>	F.A.P. RTE.	SECTION	COUNTY	TOTAL SHEETS	SHEET NO.	
#FILE#		DRAWN - MRK	REVISED -			305	27R-2	MCHENRY	673	238	
exp U.S. Services Inc. Chicago, IL BUILDINGS-EARTH & ENVIRONMENT-ENERGY INDUSTRIAL-INFRASTRUCTURE-SUSTAINABILITY	PLOT SCALE = #SCALE#	CHECKED - TKL	REVISED -			CONTRACT NO. 62268					
11-06-2013.1615533	PLOT DATE = #DATE#	DATE - 11/01/13	REVISED -			FED. ROAD DIST. NO. 1 ILLINOIS FED. AID PROJECT					