

4. CATCH BASINS TO BE ADJUSTED WITH NEW TYPE 1 FRAME, OPEN LID.
 STATION OFFSET
 325+26.32 15.2' LT
 325+35.26 4.9' LT
5. MANHOLES TO BE ADJUSTED WITH NEW TYPE 1 FRAME, CLOSED LID.
 STATION OFFSET RIM ELEVATION
 325+35.27 10.3' LT 941.45
6. MANHOLES TO BE ADJUSTED WITH NEW TYPE 1 FRAME, OPEN LID.
 STATION OFFSET RIM ELEVATION
 325+18.80 89.1' LT 940.27

29' - STORM SEWERS
TO BE CLEANED 15"

10' - STORM SEWERS
TO BE CLEANED 12"

128' - STORM SEWERS
TO BE CLEANED 12"

PROP. U.S. ROUTE 14

EX. U.S. ROUTE 14

- NOTES:
 1. SEE SHEETS 270 TO 280 FOR DRAINAGE STRUCTURE AND PIPE SCHEDULE.
 2. SEE SHEET 280 FOR PIPE UNDERDRAINS SCHEDULE.
 3. SEE SHEET 75 FOR CORRUGATED MEDIAN DETAIL AT DRAINAGE STRUCTURE AND PLACEMENT OF DRAINAGE STRUCTURE.

| | | |
|------|--------------------------|------|
| PLAN | SURVEYED | DATE |
| | PLOTTED | |
| | GRADES CHECKED | |
| | STRUCTURE NOTATIONS CHKD | |
| | NO. | |

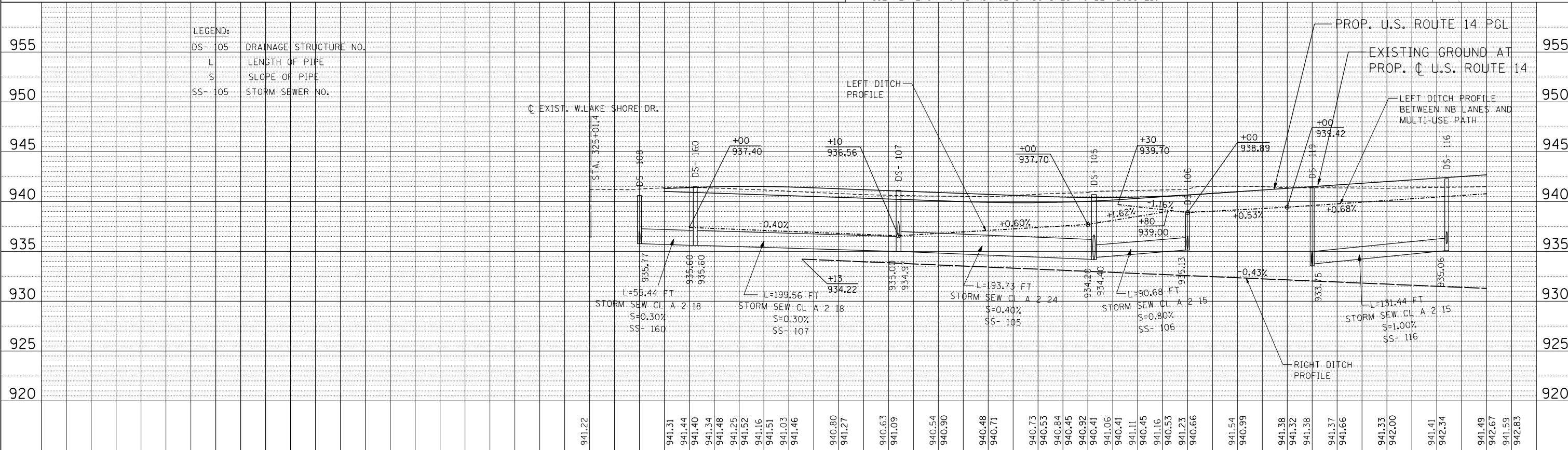
DRAINAGE LEGEND

- PROPOSED INLET
- PROPOSED MANHOLE
- PROPOSED CATCH BASIN
- ⊗ PROPOSED DRY WELL
- ▶ PROPOSED CULVERT END SECTION
- ▬ PROPOSED PAVED DITCH
- ⋯ EXISTING CULVERT
- EXISTING STORM SEWER
- PROPOSED STORM SEWER
- PROPOSED UNDERDRAIN
- ↔ PROPOSED SUMMIT
- PROPOSED SWALE
- ~ PROPOSED DITCH
- RT DITCH PROFILE
- - - LT DITCH PROFILE
- ⊗ PROPOSED PIPE
- ⊗ PROPOSED STR.
- ▨ WETLAND IMPACTS

STONE RIPRAP CL A4, 9.4 SQ YD
 FILTER FABRIC FOR RIPRAP, 9.4 SQ YD
 L=10'

* THE FRAME AND GRATES OF THESE STRUCTURES SHALL BE ADJUSTED TO THE FINAL RIM ELEVATION AS SHOWN ON THE DRAINAGE SCHEDULES. SEE NOTES ON SHEETS 218 AND 229 REGARDING THE INTERIM RIM ELEVATIONS DURING NOTING. THE ADJUSTMENTS OF THESE STRUCTURES TO THE FINAL RIM ELEVATION WILL BE PAID AT THE CONTRACT UNIT PRICE PER EACH FOR DRAINAGE STRUCTURES TO BE ADJUSTED.

| | | |
|---------|--------------------------|------|
| PROFILE | SURVEYED | DATE |
| | PLOTTED | |
| | GRADES CHECKED | |
| | STRUCTURE NOTATIONS CHKD | |
| | NO. | |



11-07-2013 16:48:09 HECHTBR T:\DOCUMENT\1934398\1\CIVIL\CON\DRAG080814H.DGN

| | | | | | | | | |
|---|---------------------|-----------------|-----------|--|---------|---------|--------------|-----------|
| FILE NAME = | USER NAME = HECHTBR | DESIGNED - | REVISED - | F.A.P. RTE. | SECTION | COUNTY | TOTAL SHEETS | SHEET NO. |
| #FILEL# | | DRAWN - MRK | REVISED - | 305 | 27R-2 | MCHENRY | 673 | 250 |
| exp U.S. Services Inc. Chicago, IL | | CHECKED - TKL | REVISED - | CONTRACT NO. 62268 | | | | |
| BUILDINGS-EARTH & ENVIRONMENT-ENERGY INDUSTRIAL-INFRASTRUCTURE-SUSTAINABILITY | | DATE - 11/01/13 | REVISED - | FED. ROAD DIST. NO. 1 ILLINOIS FED. AID PROJECT | | | | |
| STATE OF ILLINOIS DEPARTMENT OF TRANSPORTATION U.S. ROUTE 14 | | | | PROPOSED DRAINAGE U.S. ROUTE 14 PLAN & PROFILE STA. 164+00 (EX) TO STA. 334+00 | | | | |
| SCALE: HORIZ. 1"=50' | | | | SCALE: VERT. 1"=5' | | | | |
| STA. 325+00 | | | | STA. 334+00 | | | | |