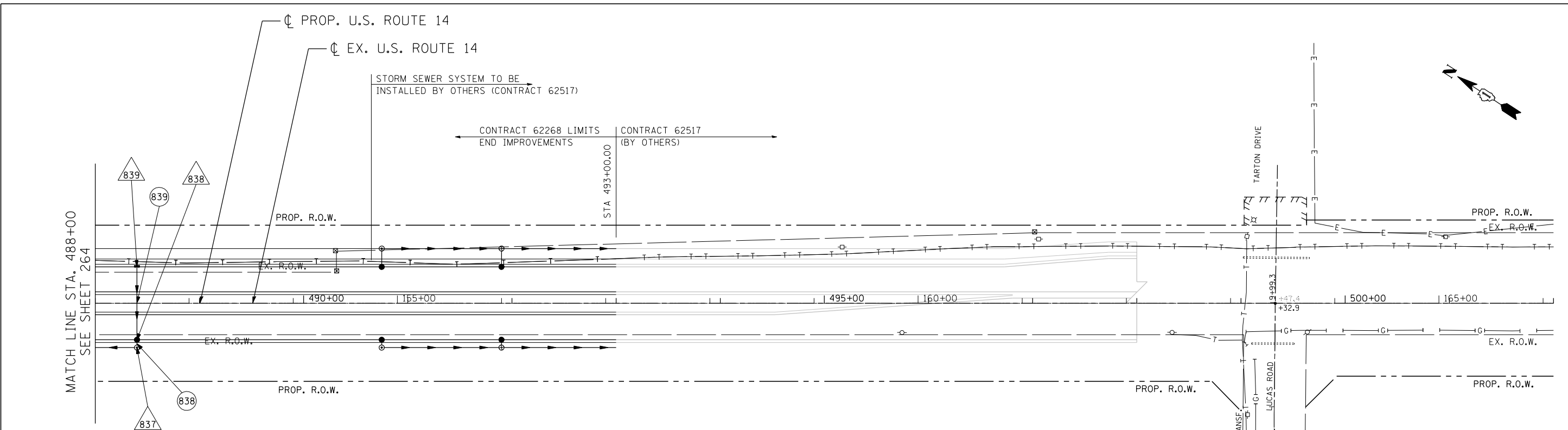


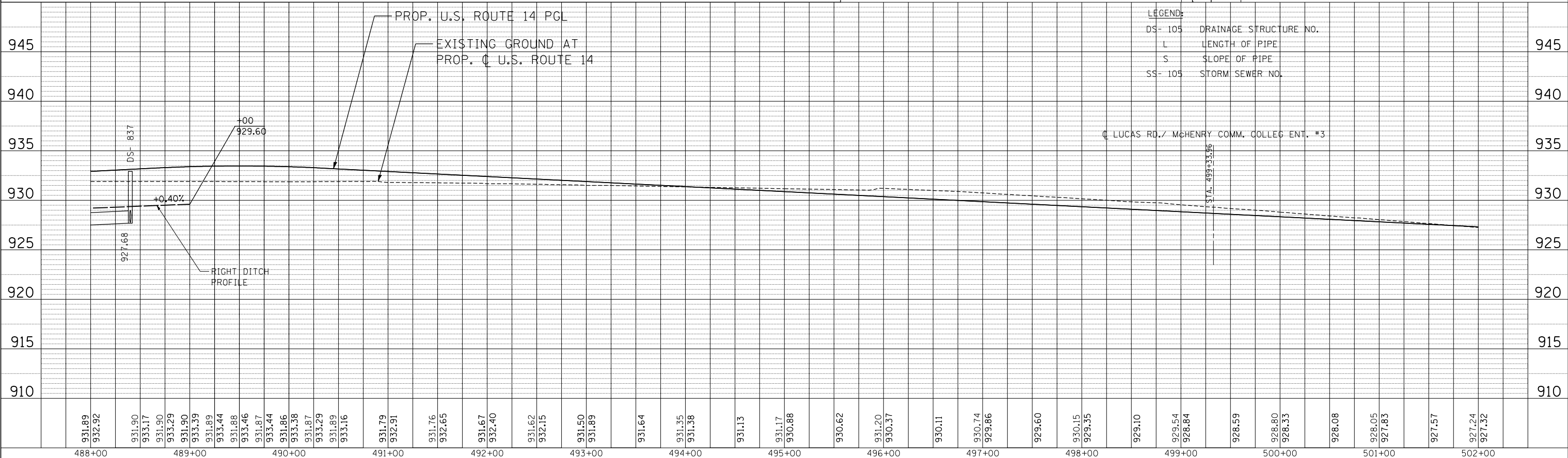
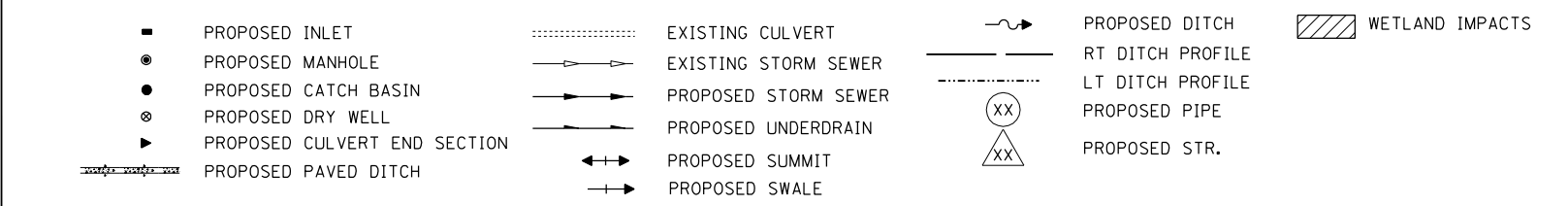
PLAN	SURVEYED	BY	DATE
	PLOTTED		
	NOTES CHECKED		
	AT 100% MAX. SCALE		
	FILE NAME		
	NO.		

PROFILE	SURVEYED	BY	DATE
	PLOTTED		
	GRADES CHECKED		
	STRUCTURE NOTATIONS OK'D		
	NO.		

11-07-2013 16:42:05 HECHTBR  
 T:\DOCUMENT\1324598\1\CIVIL\JOB\DRAGPANT.DGN



**DRAINAGE LEGEND**



FILE NAME =	USER NAME = HECHTBR	DESIGNED -	REVISED -	<b>STATE OF ILLINOIS</b> <b>DEPARTMENT OF TRANSPORTATION</b> U.S. ROUTE 14	<b>PROPOSED DRAINAGE</b> <b>U.S. ROUTE 14 PLAN &amp; PROFILE</b> <b>STA. 488+00 TO STA. 502+00</b>	F.A.P. RTE.	SECTION	COUNTY	TOTAL SHEETS	SHEET NO.	
*FILEL#		DRAWN - MRK	REVISED -			305	27R-2	MCHENRY	673	265	
PLOT SCALE = *SCALE*		CHECKED - TKL	REVISED -			CONTRACT NO. 62268					
PLOT DATE = *DATE*		DATE - 11/01/13	REVISED -			FED. ROAD DIST. NO. 1 ILLINOIS FED. AID PROJECT					