

STATE OF ILLINOIS  
DEPARTMENT OF TRANSPORTATION  
RIGHT OF WAY PLANS  
FOR PROPOSED  
FEDERAL AID HIGHWAY

ROUTE: F.A.P. 305 (U.S. ROUTE 14)

SECTION:

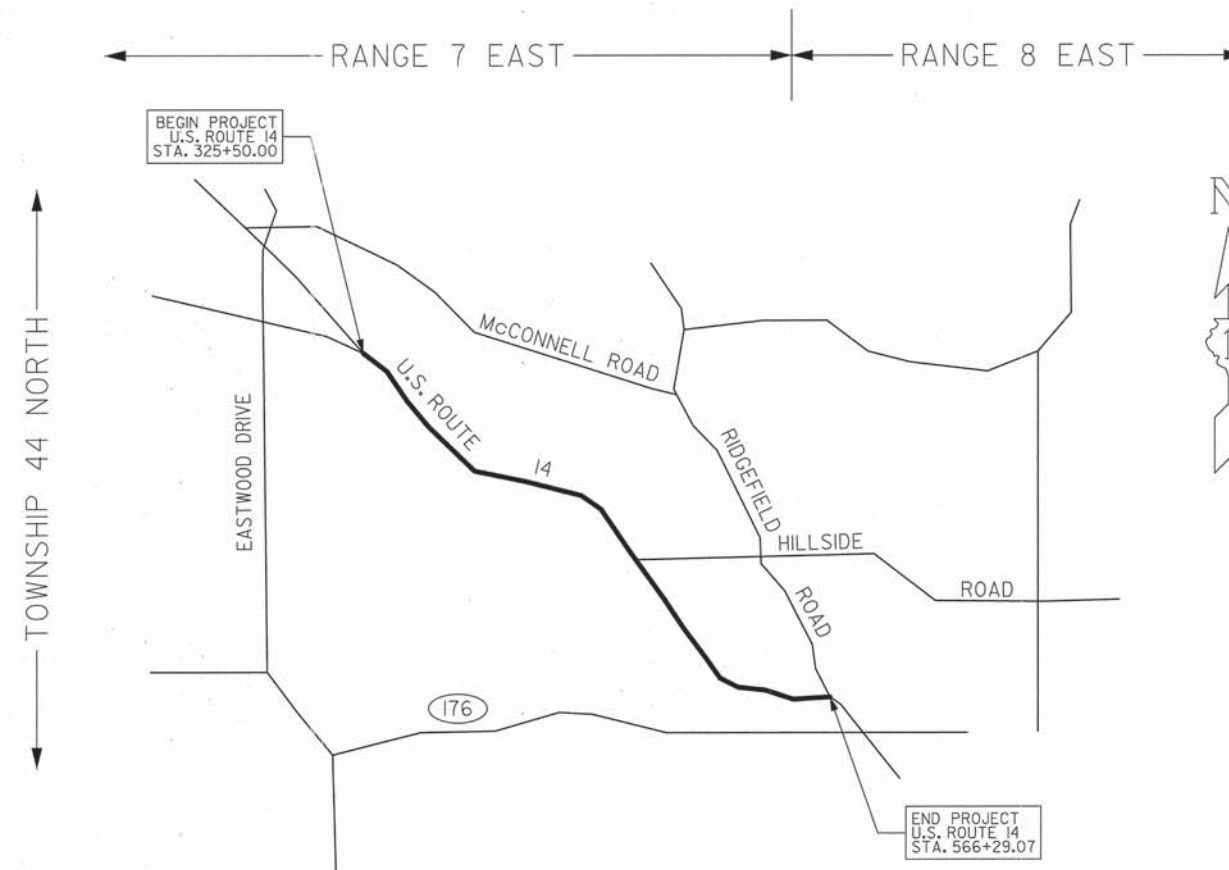
PROJECT NO.:

JOB NO.: R-91-015-98

COUNTY: McHENRY

LIMITS: WEST LAKE SHORE DRIVE TO DOLE AVENUE

F.A.P. RTE.	SECTION	COUNTY	TOTAL SHEETS	SHEET NO.
305		McHENRY	88	1
F.H.W.A. REC.	ILLINOIS	PROJECT		



PROJECT LENGTH = 24,079.07 LIN. FT. = 4.560 MILES

SS  
**RECEIVED**  
APR 05 2012  
PLATS & LEGALS

STATE OF ILLINOIS  
DEPARTMENT OF TRANSPORTATION  
DIVISION OF HIGHWAYS

SUBMITTED \_\_\_\_\_ 20\_\_\_\_  
 \_\_\_\_\_  
 DISTRICT ENGINEER

EXAMINED \_\_\_\_\_ 20\_\_\_\_  
 \_\_\_\_\_  
 DISTRICT RIGHT OF WAY PLANS ENGINEER

PASSED \_\_\_\_\_ 20\_\_\_\_  
 \_\_\_\_\_  
 DISTRICT LAND ACQUISITION ENGINEER

REVIEWED \_\_\_\_\_ 20\_\_\_\_  
 \_\_\_\_\_  
 CENTRAL BUREAU RIGHT OF WAY PLANS ENGINEER

APPROVED \_\_\_\_\_ 20\_\_\_\_  
 \_\_\_\_\_  
 ENGINEER OF LAND ACQUISITION