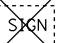

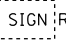

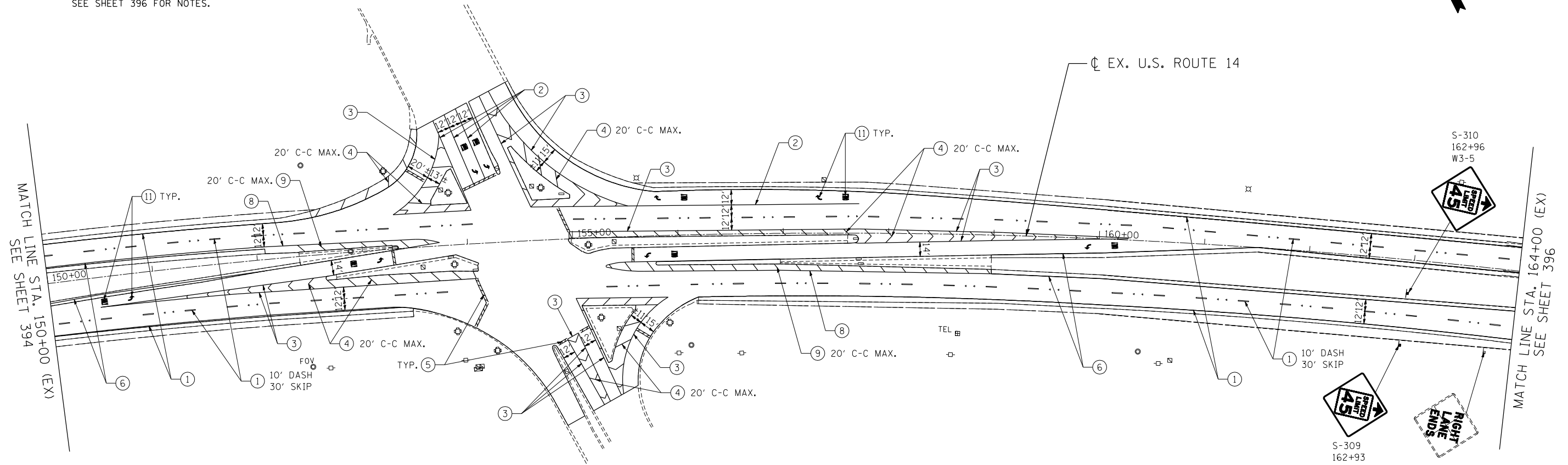
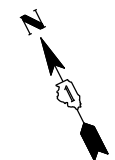


**PAVEMENT MARKING & SIGNING LEGEND**

- |                                     |  |  |  |
|-------------------------------------|--|--|--|
| ① PAVEMENT MARKING - LINE 4" WHITE  | ⑦ PAVEMENT MARKING - LINE 6" YELLOW        |  EX. SIGN TO BE REMOVED ONLY          |  PROP. LOCATION OF RELOCATED EX. SIGN |
| ② PAVEMENT MARKING - LINE 6" WHITE  | ⑧ PAVEMENT MARKING - LINE 8" YELLOW        |  EX. SIGN TO BE REMOVED AND RELOCATED |  PROP. GROUND SIGN                    |
| ③ PAVEMENT MARKING - LINE 8" WHITE  | ⑨ PAVEMENT MARKING - LINE 12" YELLOW       |  | ⊥ EXISTING GROUND SIGN   |
| ④ PAVEMENT MARKING - LINE 12" WHITE | ⑩ PAVEMENT MARKING - DOUBLE LINE 4" YELLOW |  | ⊥ PROPOSED GROUND SIGN   |
| ⑤ PAVEMENT MARKING - LINE 24" WHITE | ⑪ PAVEMENT MARKING - LETTERS AND SYMBOLS   |  |  |
| ⑥ PAVEMENT MARKING - LINE 4" YELLOW | ◁ ONE-WAY CRYSTAL MARKER                   |  |  |

NOTE:  
SEE SHEET 396 FOR NOTES.



T:\DOCUMENTS\1934\981\CIVIL\DCN\PMW00\_02.DGN  
 11-07-2013 16:32:27  
 HECHTBR  
 exp U.S. Services Inc.  
 CHICAGO, IL  
 BUILDINGS-EARTH & ENVIRONMENT-ENERGY  
 INDUSTRIAL-INFRASTRUCTURE-SUSTAINABILITY

|                        |                     |                 |           |  |  |                    |           |             |         |        |              |           |     |     |
|------------------------|---------------------|-----------------|-----------|--|--|--------------------|-----------|-------------|---------|--------|--------------|-----------|-----|-----|
| FILE NAME =<br>*FILEL* | USER NAME = HECHTBR | DESIGNED -      | REVISED - | <b>STATE OF ILLINOIS</b><br><b>DEPARTMENT OF TRANSPORTATION</b><br>U.S. ROUTE 14 | <b>PAVEMENT MARKING &amp; SIGNING PLANS</b><br><b>STA. 150+00 (EX) TO STA. 164+00 (EX)</b> |                    |           | F.A.P. RTE. | SECTION | COUNTY | TOTAL SHEETS | SHEET NO. |     |     |
|                        |                     | DRAWN - AMB     | REVISED - |  | SCALE: 1"=50'  | SHEET NO.          | OF SHEETS | STA.        | TO STA. | 305    | 27R-2        | MCHENRY   | 673 | 395 |
|                        |                     | CHECKED - TMH   | REVISED - |  |  | CONTRACT NO. 62268 |           |             |         |        |              |           |     |     |
|                        |                     | DATE - 11/01/13 | REVISED - |  | FED. ROAD DIST. NO. 1 ILLINOIS FED. AID PROJECT  |                    |           |             |         |        |              |           |     |     |