

922 MAN TA SAN 4D TIF CL  
STA. 376+19.15, 67.58' LT  
RIM = 942.20  
INV = 924.25 SW, NW

923 FIRE HYDRANT W/ AUXILIARY VALVE  
STA. 377+42.67, 80.37' LT  
BURY ELEV. = 939.90  
(MOVED)

924 10" GATE VALVE IN VV TA 5 DIA TIF CL  
STA. 377+72.39, 53.05' RT  
BURY ELEV. = 941.80

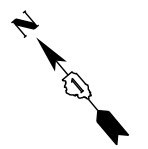
926 OMITTED

913 25 LIN FT SAN SEW 12 @ 0.43%

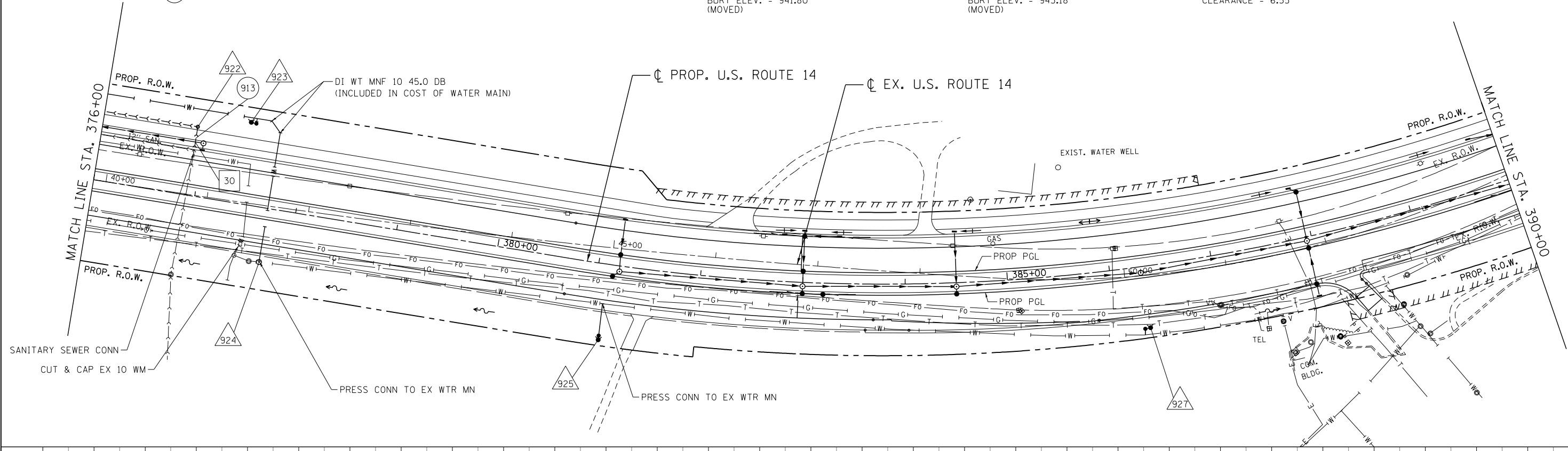
925 FIRE HYDRANT W/ AUXILIARY VALVE  
STA. 381+10.00, 74+45' RT  
BURY ELEV. = 941.80  
(MOVED)

927 FIRE HYDRANT  
STA. 386+32.32, 60.29' RT  
BURY ELEV. = 943.18  
(MOVED)

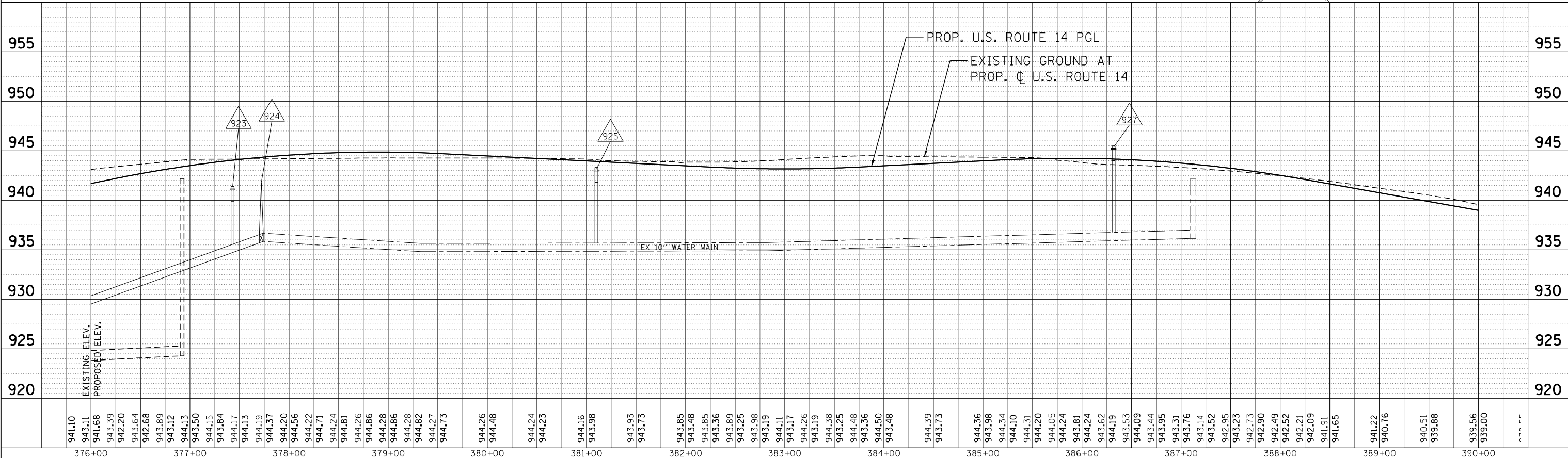
30 TOP OF PR SAN PIPE = 925.48  
BOT OF PR SS PIPE = 932.03  
CLEARANCE = 6.55'



PLAN	SURVEYED	DATE
NOTE BOOK	PLOTTED	BY
NO.	ALIGNED	
	CHECKED	
	CARD FILE NAME	



PROFILE	SURVEYED	DATE
NOTE BOOK	PLOTTED	BY
NO.	GRADES CHECKED	
	STRUCTURE	
	NOT AT THIS CHRD	



COMPANY NAME: HRGreen  
PROJECT CONTACT: HRGreen.com  
CLIENT: Illinois Professional Design Firm  
DATE PLOTTED: 11/27/2012 9:47:40 AM  
FILE NAME: 86110382-ut\_pnp\_05.DGN  
PLOT NUMBER: 607dri  
PER TABLE: srtender@hrgreen.com



USER NAME = spenal	DESIGNED - DCJ	REVISED -
FILE NAME = 86110382-ut_pnp_05.DGN	DRAWN - SMP	REVISED -
PLOT SCALE =	CHECKED - MH	REVISED -
PLOT DATE = 11/27/2012	DATE - 02/08/2012	REVISED -

**STATE OF ILLINOIS  
DEPARTMENT OF TRANSPORTATION**

<b>PROPOSED UTILITIES</b>	
<b>U.S. ROUTE 14 PLAN &amp; PROFILE</b>	
<b>STA. 376+00 TO STA. 390+00</b>	
SCALE: 1"=50'	SHEET NO. 5 OF 6 SHEETS
STA. 376+00	TO STA. 390+00

F.A.P. RTE. 305	SECTION 27R-2	COUNTY MCHENRY	TOTAL SHEETS 673	SHEET NO. 465
CONTRACT NO. 62268			ILLINOIS FED. AID PROJECT	