

PLAN	SURVEYED	DATE
	PLOTTED	BY
	ALIGNED	
	CHECKED	
	FILE NAME	
	NO.	

PROFILE	SURVEYED	DATE
	PLOTTED	BY
	GRADES CHECKED	
	STRUCTURE	
	NOT AT THIS OFFICE	
	NO.	

COMPANY NAME: HRGreen
 PROJECT CONTACT: HRGreen.com
 CLIENT: Illinois Professional Design Firm
 DATE PLOTTED: 11/27/2012 9:46:36 AM
 FILE NAME: 86110382-ut_pnp_06.dgn
 PLOT NUMBER: 62268-06
 PLOT DATE: 11/27/2012

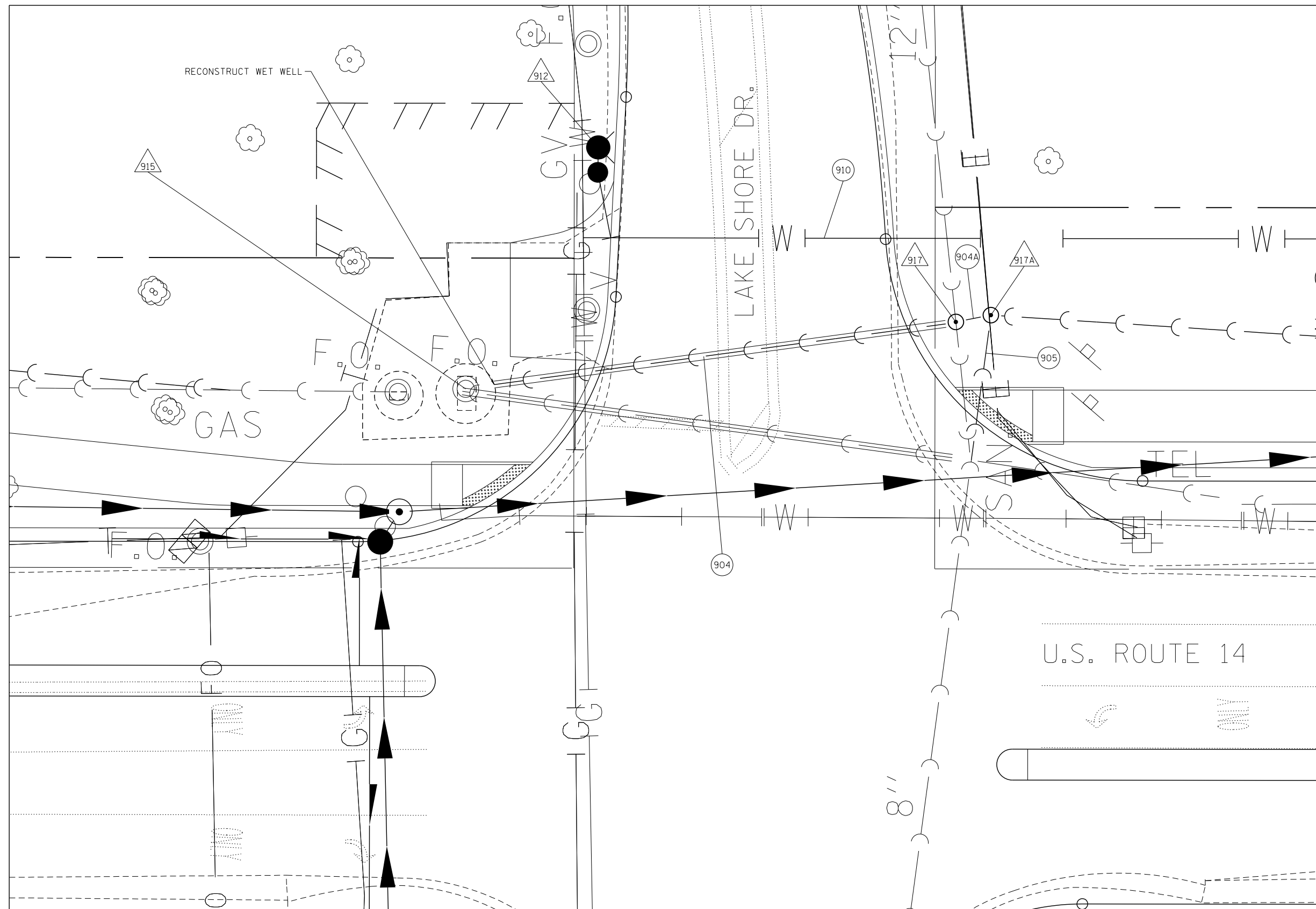


EXHIBIT
 1" = 10'

NOTES:

- CORE DRILL APPROXIMATELY 16" DIAMETER HOLE THROUGH WET WELL AND PROVIDE BOOT.
- PROVIDE MINIMUM 9" SPACING BETWEEN EXISTING AND PROPOSED OPENINGS
- MODIFY FILLET TO DIRECT FLOW ALONG SOUTH PERIMETER AND CONNECT TO EXISTING CHANNEL.



USER NAME =	spernel	DESIGNED -	DCJ	REVISED -	
FILE NAME =	86110382-ut_pnp_06.dgn	DRAWN -	SMP	REVISED -	
PLOT SCALE =		CHECKED -	MH	REVISED -	
PLOT DATE =	11/27/2012	DATE -	02/08/2012	REVISED -	

STATE OF ILLINOIS
 DEPARTMENT OF TRANSPORTATION

PROPOSED UTILITIES	
U.S. ROUTE 14 PLAN & PROFILE	
SANITARY EXHIBIT	
SCALE: 1"=10'	SHEET NO. 6 OF 6 SHEETS
STA. 390+00	TO STA. 404+00

F.A.P. RTE.	SECTION	COUNTY	TOTAL SHEETS	SHEET NO.
305	27R-2	MCHENRY	673	466
CONTRACT NO. 62268				
ILLINOIS FED. AID PROJECT				