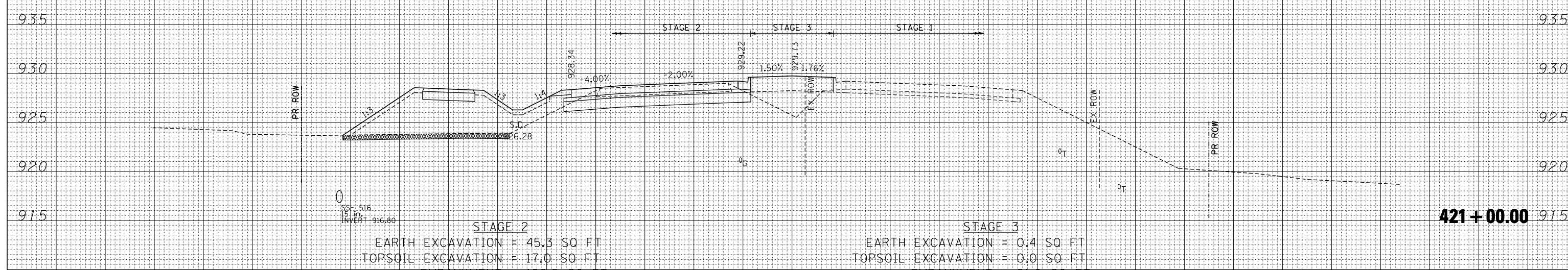
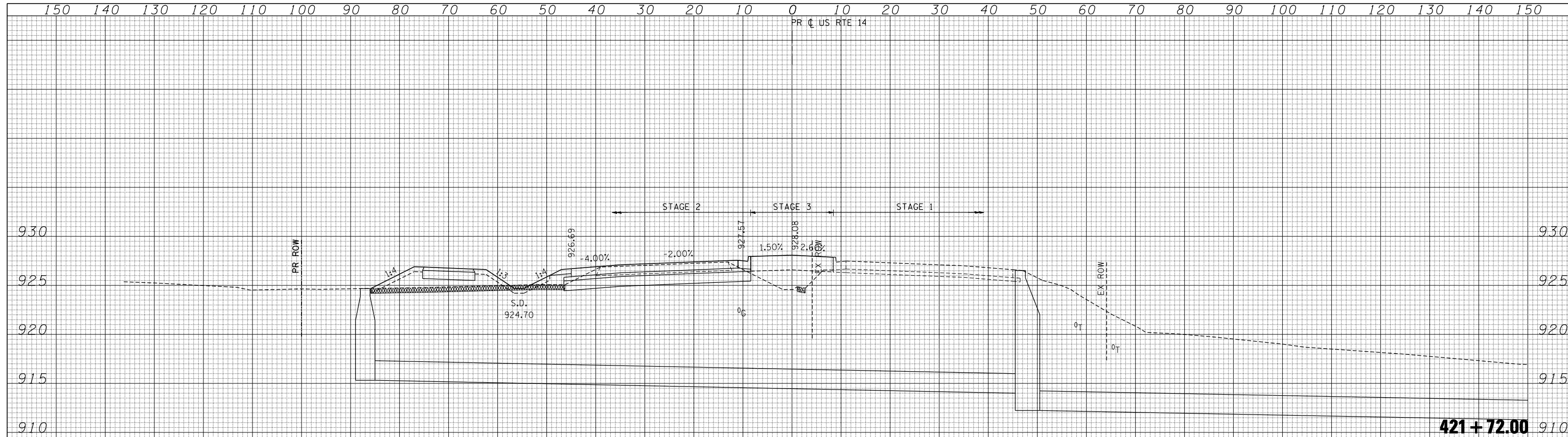


DATE	
BY	
FINAL SURVEY NO.	
SURVEYED PLOTTED TEMPLATE AREAS CHECKED	
NOTE BOOK AREAS CHECKED	

DATE	
BY	
ORIGINAL SURVEY NO.	
SURVEYED PLOTTED TEMPLATE AREAS CHECKED	
NOTE BOOK AREAS CHECKED	



**STAGE 2**  
 EARTH EXCAVATION = 45.3 SQ FT  
 TOPSOIL EXCAVATION = 17.0 SQ FT  
 EMBANKMENT = 126.5 SQ FT

**STAGE 3**  
 EARTH EXCAVATION = 0.4 SQ FT  
 TOPSOIL EXCAVATION = 0.0 SQ FT  
 EMBANKMENT = 21.0 SQ FT

- LEGEND**
- TOPSOIL REMOVAL
  - UNSUIT. MATERIAL
  - AGGREGATE SUBGRADE IMPROVEMENT (CU YD)
  - EARTH EXCAVATION: MULTI-USE PATH (80% IDOT 20% MCCD)

FILE NAME =  
 \*FILEL\*  
 exp U.S. Services Inc.  
 Chicago, IL  
 BUILDINGS-EARTH & ENVIRONMENT-ENERGY  
 INDUSTRIAL-INFRASTRUCTURE-SUSTAINABILITY

USER NAME = \*USERS\*  
 PLOT SCALE = \*SCALE\*  
 PLOT DATE = \*DATE\*

DESIGNED -  
 DRAWN - AG  
 CHECKED - BRH  
 DATE - 11/01/13

REVISED -  
 REVISED -  
 REVISED -  
 REVISED -

**STATE OF ILLINOIS**  
**DEPARTMENT OF TRANSPORTATION**

**U.S. ROUTE 14 CROSS SECTIONS**

SCALE: HORIZ. 1" = 10' VERT. 1" = 5'  
 STA. 421+00.00 TO STA. 421+72.00

F.A.P. RTE.	SECTION	COUNTY	TOTAL SHEETS	SHEET NO.
305	27R-2	MCHENRY	673	623
			CONTRACT NO. 62268	
ILLINOIS FED. AID PROJECT				