

**STATE OF ILLINOIS**  
**DEPARTMENT OF TRANSPORTATION**  
**DIVISION OF HIGHWAYS**  
**PROPOSED**  
**HIGHWAY PLANS**

F.A.P. RTE.	SECTION	COUNTY	TOTAL SHEETS	SHEET NO.
681	(113,114)RS-4	LIVINGSTON	18	1
	ILLINOIS	CONTRACT NO. 66752		

**INDEX OF SHEETS**

- 1 COVER SHEET
- 2 GENERAL NOTES
- 3-5 SUMMARY OF QUANTITIES
- 6-7 TYPICAL SECTIONS
- 8-10 SCHEDULES
- 11-13 TIE POINTS
- 14 SCHEMATIC
- 15-18 DETAILS

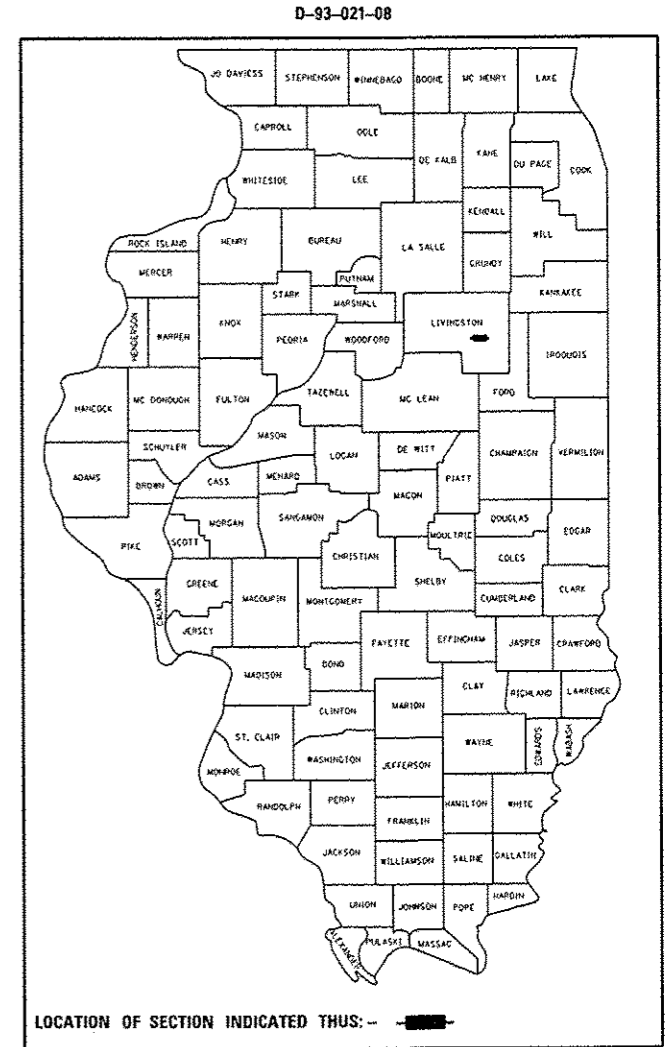
**STANDARDS**

- 000001-06 STANDARD SYMBOLS, ABBREVIATIONS AND PATTERNS
- 001006 DECIMAL OF AN INCH AND OF A FOOT
- 406201-01 MAILBOX TURNOUT
- 442201-03 CLASS D PATCHES
- 482011-03 HMA SHOULDER STRIPS/SHOULDERS WITH RS OR WIDENING & RS PROJECTS
- 667101-02 PERMANENT SURVEY MARKERS
- 701001-02 OFF-ROAD OPERATIONS 2L, 2W, MORE THAN 15' (4.5 m) AWAY
- 701006-05 OFF-ROAD OPERATIONS 2L, 2W, 15' (4.5 m) TO 24" (600 mm) FROM PAVEMENT EDGE
- 701011-04 OFF-ROAD MOVING OPERATIONS 2L, 2W, DAY ONLY
- 701201-04 LANE CLOSURE, 2L, 2W, DAY ONLY, FOR SPEEDS ≥ 45 MPH
- 701301-04 LANE CLOSURE, 2L, 2W, SHORT TIME OPERATIONS
- 701306-03 LANE CLOSURE, 2L, 2W, SLOW MOVING OPERATIONS DAY ONLY, FOR SPEEDS ≥ 45 MPH
- 701311-03 LANE CLOSURE, 2L, 2W, MOVING OPERATIONS - DAY ONLY
- 701501-06 URBAN LANE CLOSURE, 2L, 2W, UNDIVIDED
- 701901-03 TRAFFIC CONTROL DEVICES
- 780001-04 TYPICAL PAVEMENT MARKINGS
- 781001-03 TYPICAL APPLICATIONS RAISED REFLECTIVE PAVEMENT MARKERS

**FAP ROUTE 681 (IL 116)**  
**SECTION (113,114)RS-4**

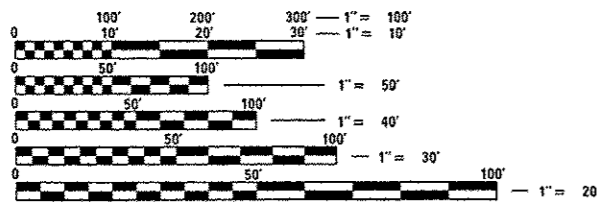
**3P RESURFACING**  
**LIVINGSTON COUNTY**

C-93-034-08



**FUNCTIONAL CLASSIFICATION**  
**MINOR ARTERIAL (NON-URBAN)**

<b>WEST END OF PROJECT</b>	<b>EAST END OF PROJECT</b>
2011 ADT = 3400	2011 ADT = 1800
P.V. = 91.32%	P.V. = 89.44%
S.U. = 5.74%	S.U. = 2.78%
M.U. = 2.94%	M.U. = 7.78%

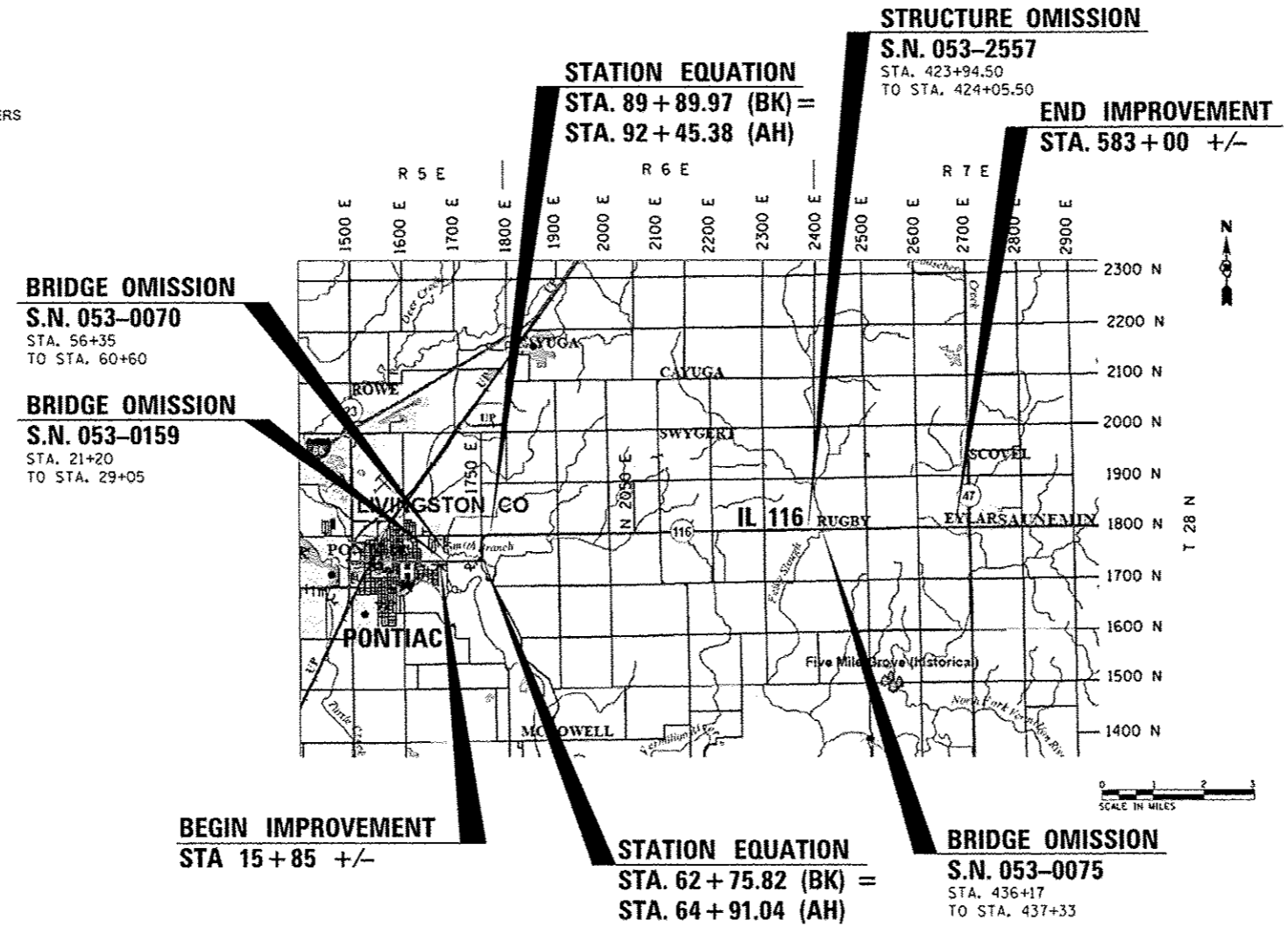


FULL SIZE PLANS HAVE BEEN PREPARED USING STANDARD ENGINEERING SCALES. REDUCED SIZED PLANS WILL NOT CONFORM TO STANDARD SCALES. IN MAKING MEASUREMENTS ON REDUCED PLANS, THE ABOVE SCALES MAY BE USED.

J.U.L.I.E.  
 JOINT UTILITY LOCATION INFORMATION FOR EXCAVATION  
 1-800-892-0123  
 OR 811

**PROJECT ENGINEER: JOE KANNEL, P.E.**  
**UNIT CHIEF: DUANE LUKKARI, P.E.**

**CONTRACT NO. 66752**



GROSS LENGTH = 56,244.45 FT. = 10.65 MILES  
 NET LENGTH = 54,907.45 FT. = 10.40 MILES

STATE OF ILLINOIS  
 DEPARTMENT OF TRANSPORTATION  
 DIVISION OF HIGHWAYS

SUBMITTED June 6 2014  
*Paul Coete, P.E.*  
 DEPUTY DIRECTOR OF HIGHWAYS, REGION ENGINEER

June 27 2014  
*John D. Baranzelli, P.E.*  
 ENGINEER OF DESIGN AND ENVIRONMENT

June 27 2014  
*Omer Osman, P.E.*  
 DIRECTOR OF HIGHWAYS, CHIEF ENGINEER

**PRINTED BY THE AUTHORITY**  
**OF THE STATE OF ILLINOIS**

GENERAL NOTES

THE THICKNESS OF HMA SHOWN ON THE PLANS IS THE NOMINAL THICKNESS. DEVIATIONS FROM THE NOMINAL THICKNESS WILL BE PERMITTED WHEN SUCH DEVIATIONS OCCUR DUE TO IRREGULARITIES IN THE EXISTING SURFACE OR BASE ON WHICH THE HMA IS PLACED.

THE HMA SURFACE OF ALL MAILBOX TURNOUTS, PRIVATE ENTRANCES, COMMERCIAL ENTRANCES, AND SIDE ROADS SHALL BE MADE NEATLY, IN A WORKMANLIKE MANNER, AND SHALL ACCURATELY CONFORM TO THE SHAPES AND DIMENSIONS SHOWN ON THE PLAN DETAILS. IF REQUIRED BY THE ENGINEER, THE CONTRACTOR SHALL SAW CUT THE HMA SURFACE TO CONFORM TO THE SHAPES AND DIMENSIONS SHOWN ON THE PLAN DETAILS. THIS WORK WILL BE INCLUDED IN THE COST OF THE HMA SURFACE.

EXCEPT AS NOTED ON THE PLANS, PAVEMENT GRADES SHOWN ARE AT THE TOP OF PAVEMENT SURFACES.

THE ENGINEER WILL BE THE SOLE JUDGE CONCERNING CURING TIME FOR THE VARIOUS HMA LIFTS.

FOR STABILIZATION, ALL TYPE III BARRICADES WILL REQUIRE A MINIMUM OF FOUR SAND BAGS PER BARRICADE.

SEEDING WILL NOT BE PERMITTED AT ANY TIME WHEN THE GROUND IS FROZEN, WET, OR IN AN UNTILLABLE CONDITION. LOCATIONS TO BE SEEDED WILL BE DETERMINED BY THE ENGINEER.

THE FINISHED EARTHWORK SHALL HAVE A VEGETATION SUSTAINING SOIL COVERING THE TOP FOUR INCHES IN AREAS TO BE SEEDED OR SODDED. THE VEGETATION SUSTAINING SOIL REQUIRED WILL NOT BE PAID FOR SEPARATELY BUT WILL BE INCLUDED IN THE COST OF FURNISHED EXCAVATION.

ALL EXCAVATED MATERIAL, WHICH INCLUDES DIGGING OR GRADING OF ANY SOIL OR FILL MATERIAL, WITH THE EXCEPTION OF AGGREGATE FILLS, MUST BE INCORPORATED WITHIN THE IDOT RIGHT OF WAY DUE TO ENVIRONMENTAL DOCUMENTATION REQUIREMENTS.

ON EXISTING PAVEMENT WHICH MAY BE SUPERELEVATED, THE NEW HMA PAVEMENT SHALL BE BUILT WITH THE SAME SUPERELEVATION UNLESS NEW SUPERELEVATION RATES ARE GIVEN ON THE PLANS.

ALL ELEVATIONS REFERRING TO U.S.C.S. MEAN SEA LEVEL DATUM.

ANY REFERENCE TO A STANDARD IN THESE PLANS SHALL BE INTERPRETED TO MEAN THE EDITION AS INDICATED BY THE SUBNUMBER SHOWN IN THE LIST OF STANDARDS OR THE COPY INCLUDED IN THESE PLANS.

COMMITMENTS

ENVIRONMENT COORDINATION

THE FOLLOWING RATES OF APPLICATION HAVE BEEN USED IN CALCULATING PLAN QUANTITIES:

GRANULAR MATERIALS	2.05	TONS / CU YD
HMA RESURFACING	112	LBS / SQ YD / IN
SHORT TERM PAVEMENT MARKING	10	FT /100 FT OF APPLICATION
MIX FOR CRACKS, JTS & FLOWYS	0.0003	TONS / SQ YD
LEVEL BINDER (HAND METHOD)	0.0005	TONS / SQ YD
SUPPLEMENTAL WATERING	3	GAL / SQ YD / APPLICATION
CALCIUM CHLORIDE	2	LB / SQ YD / APPLICATION
AGGREGATE DITCH CHECKS	5	TONS AGGREGATE

STATE OF ILLINOIS  
DEPARTMENT OF TRANSPORTATION  
DISTRICT THREE

PREPARED BY: *T. Beaulieu*  
DISTRICT STUDIES & PLANS ENGINEER

DATE: 6-6-14

EXAMINED BY: *Debra J. ...*  
DISTRICT CONSTRUCTION ENGINEER

*Wayne L. Phillips*  
DISTRICT MATERIALS ENGINEER

*Paul A. ...*  
DISTRICT OPERATIONS ENGINEER

FILE NAME =	USER NAME = lukkasrjdp	DESIGNED -	REVISED -	<b>STATE OF ILLINOIS DEPARTMENT OF TRANSPORTATION</b>	<b>GENERAL NOTES</b>	F.A.P. RTE. =	SECTION	COUNTY	TOTAL SHEETS	SHEET NO.
c:\pe_work\pwwork\lukkasrjdp\02596957\0345752*shl-cover.dgn		DRAWN -	REVISED -			681	(113.114)RS-4	LIVINGSTON	18	2
PLOT SCALE = 100.0000 1 / in.		CHECKED -	REVISED -			CONTRACT NO. 66752				
PLOT DATE = 6/5/2014		DATE -	REVISED -			[ILLINOIS] FED. AID PROJECT				
SCALE: SHEET NO. OF SHEETS STA. TO STA.										

CODE NO.	ITEM	UNIT	TOTAL QUANTITY	CONSTRUCTION CODE	
				100% STATE	100% STATE
				ROADWAY 0005 URBAN	ROADWAY 0005 RURAL
20400800	FURNISHED EXCAVATION	CU YD	55	3	52
25000210	SEEDING, CLASS 2A	ACRE	0.1	0.01	0.09
25000400	NITROGEN FERTILIZER NUTRIENT	POUND	9	1	8
25000500	PHOSPHORUS FERTILIZER NUTRIENT	POUND	9	1	8
25000600	POTASSIUM FERTILIZER NUTRIENT	POUND	9	1	8
25100630	EROSION CONTROL BLANKET	SQ YD	471	41	430
40200800	AGGREGATE SURFACE COURSE, TYPE B	TON	6	2	4
40600400	MIXTURE FOR CRACKS, JOINTS, AND FLANGEWAYS	TON	55.8	6	49.8
40600525	LEVELING BINDER (HAND METHOD), N50	TON	80.2	5.7	74.5
40600627	LEVELING BINDER (MACHINE METHOD), IL-9.5FG, N50	TON	6801	465	6336
40600990	TEMPORARY RAMP	SQ YD	416	148	268
40603310	HOT-MIX ASPHALT SURFACE COURSE, MIX "C", N50	TON	13,595	928	12,667
40800050	INCIDENTAL HOT-MIX ASPHALT SURFACING	TON	462	148	314
44000155	HOT-MIX ASPHALT SURFACE REMOVAL, 1 1/2"	SQ YD	164,184	11,666	152,518

\* SPECIALTY ITEM

FILE NAME =	USER NAME = Schwanberg	DESIGNED -	REVISED -	<b>STATE OF ILLINOIS DEPARTMENT OF TRANSPORTATION</b>	<b>SUMMARY OF QUANTITIES</b>				F.A.P. RTE.	SECTION	COUNTY	TOTAL SHEETS	SHEET NO.
6:\pwork\pvidot\schwanberg\0256657\066752-sht-900.dgn	DRAWN -	REVISED -	REVISED -		681	112,114RS-4	LIVINGSTON	18	3				
PLOT SCALE = 1/8" = 1' / in.	CHECKED -	REVISED -	REVISED -		SCALE: SHEET OF SHEETS STA. TO STA.				CONTRACT NO. 66752				
SMOELNAME	DATE -	REVISED -	REVISED -		ILLINOIS FED. AID PROJECT								

CODE NO.	ITEM	UNIT	TOTAL QUANTITY	CONSTRUCTION CODE	
				100% STATE	100% STATE
				ROADWAY 0005 URBAN	ROADWAY 0005 RURAL
44201839	CLASS D PATCHES, TYPE II, 16 INCH	SQ YD	75	0	75
48102100	AGGREGATE WEDGE SHOULDER, TYPE B	TON	3824	219	3605
66700205	PERMANENT SURVEY MARKERS, TYPE I	EACH	14	2	12
67000400	ENGINEER'S FIELD OFFICE, TYPE A	CAL MO	5	0	5
67100100	MOBILIZATION	L SUM	1	0	1
70100450	TRAFFIC CONTROL AND PROTECTION, STANDARD 701201	L SUM	1	0	1
70100460	TRAFFIC CONTROL AND PROTECTION, STANDARD 701306	L SUM	1	0	1
70102620	TRAFFIC CONTROL AND PROTECTION, STANDARD 701501	L SUM	1	1	0
70300100	SHORT TERM PAVEMENT MARKING	FOOT	16,806	1371	15,435
70300220	TEMPORARY PAVEMENT MARKING - LINE 4"	FOOT	125,525	1743	123,782
70300240	TEMPORARY PAVEMENT MARKING - LINE 6"	FOOT	12,960	218	12,742
70301000	WORK ZONE PAVEMENT MARKING REMOVAL	SQ FT	5602	457	5145
* 78008210	POLYUREA PAVEMENT MARKING TYPE I - LINE 4"	FOOT	126,190	1743	124,447
* 78008230	POLYUREA PAVEMENT MARKING TYPE I - LINE 6"	FOOT	12,960	218	12,742

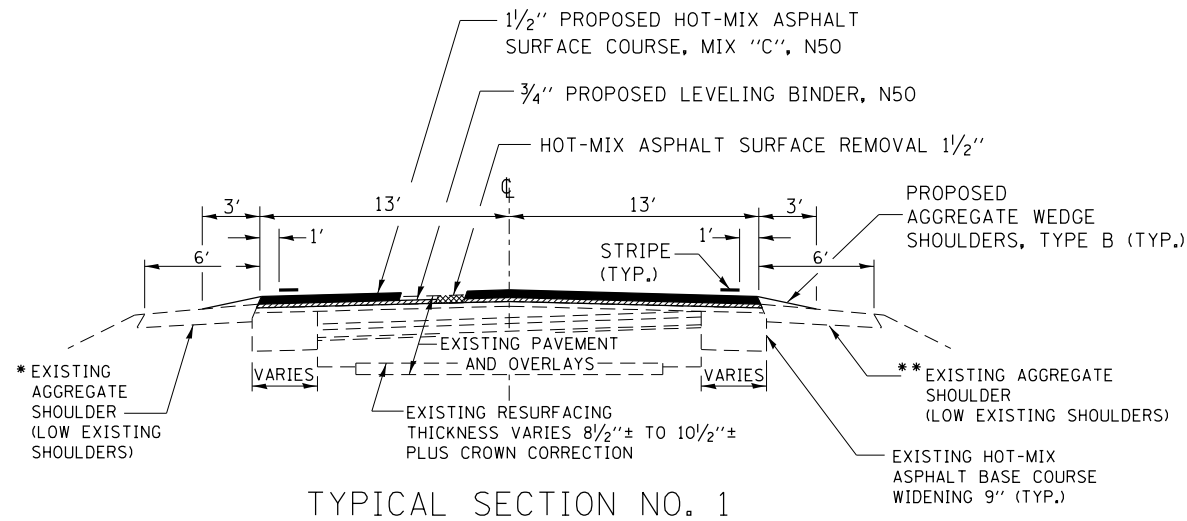
FILE NAME :	USER NAME : Schwenkerg	DESIGNED -	REVISED -	<b>STATE OF ILLINOIS DEPARTMENT OF TRANSPORTATION</b>	<b>SUMMARY OF QUANTITIES</b>			F.A.P. RTE.	SECTION	COUNTY	TOTAL SHEETS	SHEET NO.		
o:\p\work\p\uidot\schwenkerg\0256607\	66752-shi-500.dgn	DRAWN -	REVISED -		SCALE:	SHEET OF	SHEETS	STA.	TO STA.	681	112.114RS-4	LIVINGSTON	18	4
	PLOT SCALE = 1/8" = 100.0000' / 1" IN	CHECKED -	REVISED -		CONTRACT NO. 66752									
#MODELNAME#	PLOT DATE = 6/6/2014	DATE -	REVISED -		ILLINOIS FED. AID PROJECT									

113 114

CODE NO.	ITEM	UNIT	TOTAL QUANTITY	CONSTRUCTION CODE	
				100% STATE	100% STATE
				ROADWAY 0005 URBAN	ROADWAY 0005 RURAL
* 78100100	RAISED REFLECTIVE PAVEMENT MARKER	EACH	699	54	645
* 78100105	RAISED REFLECTIVE PAVEMENT MARKER (BRIDGE)	EACH	4	2	2
78300200	RAISED REFLECTIVE PAVEMENT MARKER REMOVAL	EACH	461	50	411
X4060110	BITUMINOUS MATERIALS (PRIME COAT)	POUND	111,609	8227	103,382
Z0030850	TEMPORARY INFORMATION SIGNING	SO FT	126	42	84
Z0034105	MATERIAL TRANSFER DEVICE	TON	20,395	1393	19,002

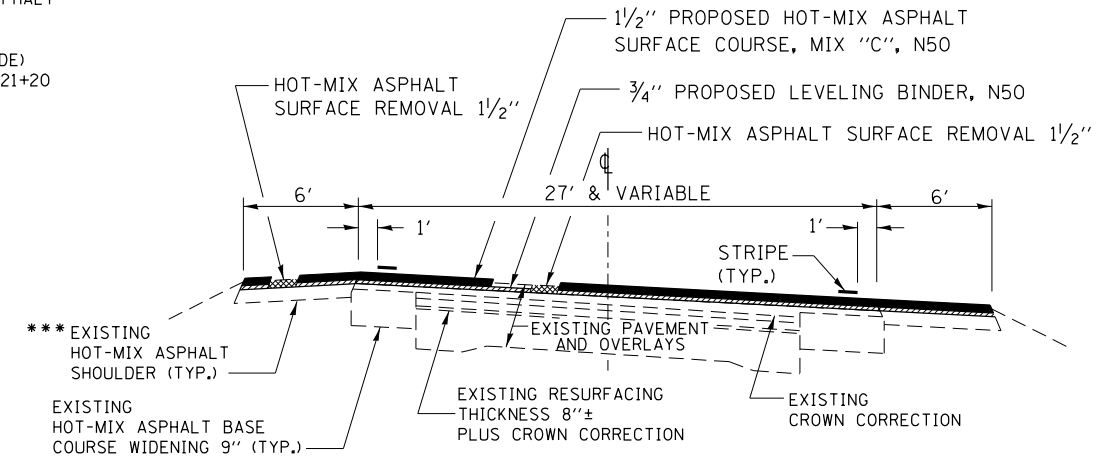
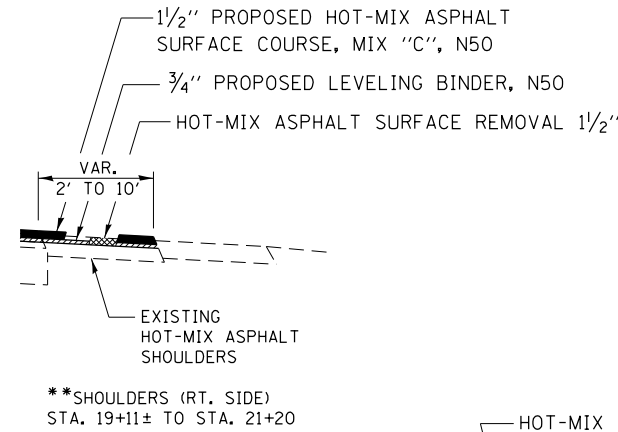
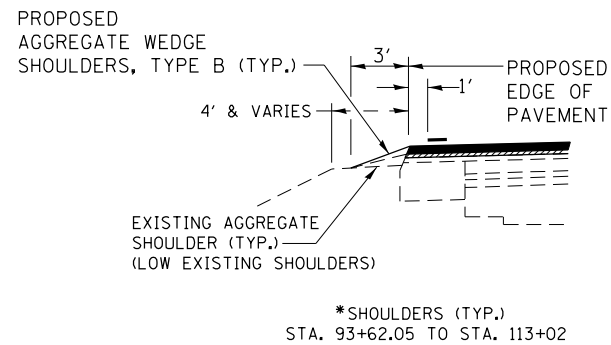
to \* SPECIALTY ITEM

FILE NAME =	USER NAME = Schwenkerg	DESIGNED -	REVISED -	<b>STATE OF ILLINOIS DEPARTMENT OF TRANSPORTATION</b>	<b>SUMMARY OF QUANTITIES</b>				F.A.P. RTE.	SECTION	COUNTY	TOTAL SHEETS	SHEET NO.
c:\pwwork\avidochschwenkerg\d0256657\	66752-urb-500.dgn	DRAWN -	REVISED -		661	(112,114)RS-4	LIVINGSTON	18	5				
	PLOT SCALE = 1/8" = 1' / 1/2"	CHECKED -	REVISED -		CONTRACT NO. 66752				ILLINOIS FED. AID PROJECT				
MODELNAME =	PLOT DATE = 6/6/2014	DATE -	REVISED -		SCALE:	SHEET OF SHEETS	STA. TO STA.						



TYPICAL SECTION NO. 1

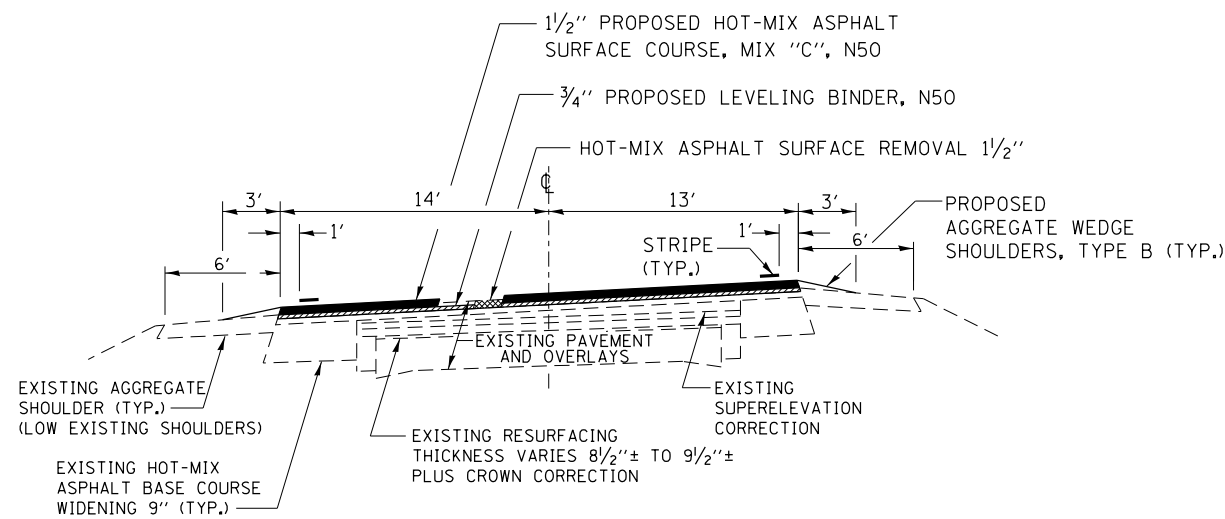
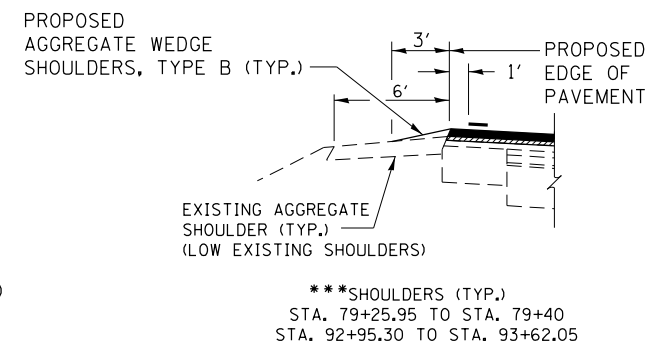
STA. 15+85 TO STA. 21+20  
 OMISSION - S.N. 053-0159 - STA. 21+20 TO STA. 29+05  
 STA. 29+05 TO STA. 53+96  
 STA. 65+74 TO STA. 79+25.95  
 STA. 93+62.05 TO STA. 113+02



TYPICAL SECTION NO. 3

STA. 79+25.95 TO STA. 93+62.05

STA. EQUATION AT P.T.  
 STA. 89+89.40 (BK) = STA. 92+45.38 (AH)



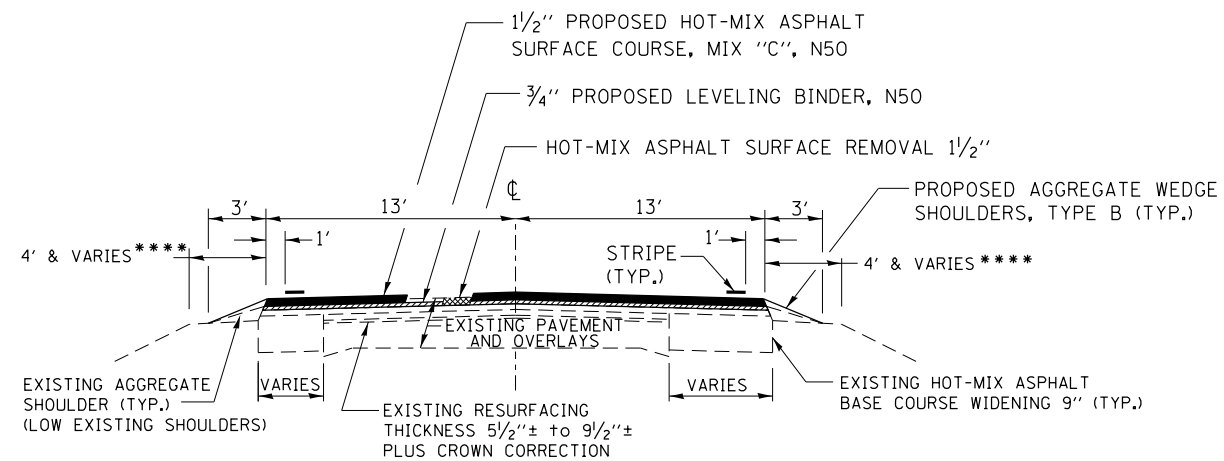
TYPICAL SECTION NO. 2

STA. 53+96 TO STA. 56+35  
 OMISSION - S.N. 053-0070 - STA. 56+35 TO STA. 60+60  
 STA. 60+60 TO STA. 65+74

STA. EQUATION AT P.T.  
 STA. 62+75.82 (BK) = STA. 64+90.80 (AH)

EXISTING INFORMATION FROM OLD PLANS  
 STA. 79+25.95 TO STA. 81+00.95 (NORMAL CROWN TO S.E.)  
 STA. 81+00.95 TO STA. 89+31.07 9BK) (SUPERELEVATION RATE = 0.06 FT/FT  
 STA. 89+31.07 (BK) TO STA. 93+62.05 (AH) (S.E. TO NORMAL CROWN)

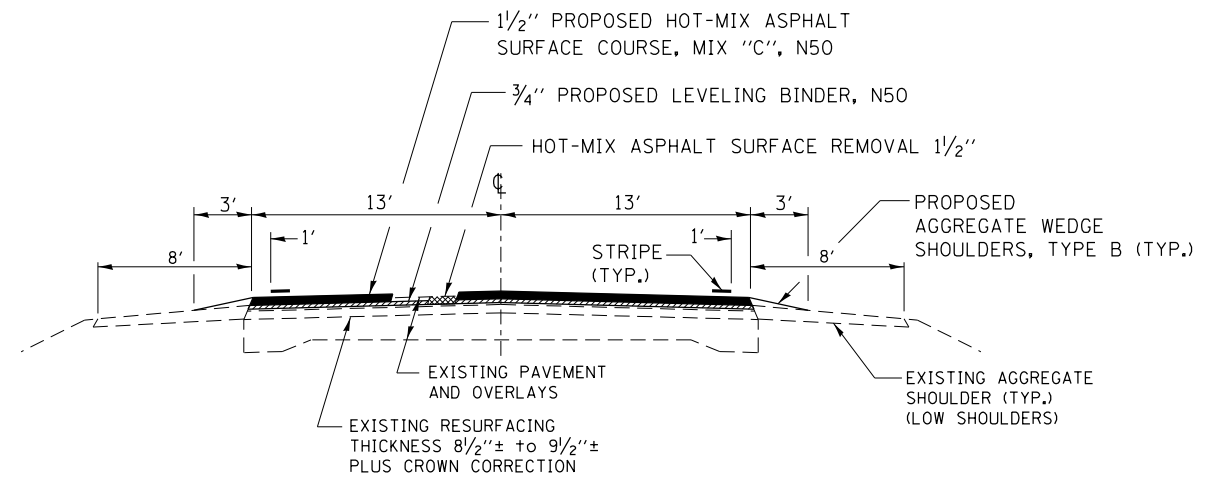
FILE NAME =	USER NAME = Schwankerg	DESIGNED -	REVISED -	<b>STATE OF ILLINOIS DEPARTMENT OF TRANSPORTATION</b>	<b>TYPICALS</b>	F.A.P. RTE.	SECTION	COUNTY	TOTAL SHEETS	SHEET NO.
c:\pwork\pwork\pwork\schwankerg\d0256657\066752-sht-details.DGN		DRAWN -	REVISED -			681	(113,114)RS-4	LIVINGSTON	18	6
PLOT SCALE = 100.0000' / 1" =		CHECKED -	REVISED -			SCALE: SHEET NO. OF SHEETS STA. TO STA.			CONTRACT NO. 66752	
PLOT DATE = 6/6/2014		DATE -	REVISED -			ILLINOIS FED. AID PROJECT				



TYPICAL SECTION NO. 4

STA. 113+05 TO STA. 423+94.5  
 OMISSION - S.N. 053-2557 (BOX CULVERT) - STA. 423+94.50 TO STA. 424+05.50  
 STA. 424+05.50 TO STA. 436+17  
 OMISSION - S.N. 053-0075 (FELKY SLOUGH) - STA. 436+17 TO STA. 437+33  
 STA. 437+33 TO STA. 579+57

\*\*\*\*\* EXISTING SHOULDERS 9'  
 STA. 577+00 TO STA. 579+57



TYPICAL SECTION NO. 5

STA. 579+57 TO STA. 582+08

	HMA LEVELING BINDER	HMA SURFACE COURSE	HMA PATCHES
PG GRADE	PG64-22	PG64-22	PG64-22
DESIGN AIR VOIDS	4.0% @ N50	4.0% @ N50	4.0% @ N50
MIXTURE COMPOSITION	IL-9.5FG	IL-9.5	IL-19.0
FRICTION AGGREGATE		MIXTURE C	
DENSITY TEST METHOD	CORRELATION	CORRELATION	CORRELATION

FILE NAME =	USER NAME = Schwankerg	DESIGNED -	REVISED -
ei:\pw\work\p\idot\schwankerg\d0256657\066752-sht-details.DGN		DRAWN -	REVISED -
	PLOT SCALE = 100.0000' / in.	CHECKED -	REVISED -
	PLOT DATE = 6/6/2014	DATE -	REVISED -

STATE OF ILLINOIS  
 DEPARTMENT OF TRANSPORTATION

<b>TYPICALS</b>			
SCALE:	SHEET NO.	OF SHEETS	STA. TO STA.

F.A.P. RTE.	SECTION	COUNTY	TOTAL SHEETS	SHEET NO.
681	(113,114)RS-4	LIVINGSTON	18	7
			CONTRACT NO. 66752	
ILLINOIS FED. AID PROJECT				

MAINLINE SCHEDULE													
	STA.	TO	STA.	WIDTH	LENGTH	AREA	LEVEL BINDER (M.M.), 3/4 "	HMA SURF. CSE. MIX. "C" 1 1/2 "	BIT. MAT'LS. (PRIME COAT)	MIX CRACKS JOINTS & FLWY	LEVEL BINDER (H.M.),	HMA SURF. REM 1 1/2"	TEMP RAMP
				FEET	FEET	SQ YD	TON	TON	POUND	TON	TON	SQ YD	SQ YD
<b>URBAN</b>													
BRIDGE OMISSION - S.N. 053-0159	15+85.00	TO	21+20.00	26	535.00	1546	65	130	1044	0.5	0.8	1546	29
	29+05.00	TO	53+96.00	26	2491.00	7196	303	605	4858	2.2	3.6	7196	14
	53+96.00	TO	56+35.00	27	239.00	717	31	61	484	0.3	0.4	717	14
BRIDGE OMISSION - S.N. 053-0070	60+60.00	TO	62+75.82	27	215.82	647	28	55	438	0.2	0.4	647	14
STA. EQUATION 62+75.82 (BK) = 64+90.00 (AH)	62+75.82	TO	65+74.00	27	298.18	895	38	77	604	0.3	0.5	895	
<b>SUBTOTALS</b>						<b>11001</b>	<b>465</b>	<b>928</b>	<b>7428</b>	<b>4</b>	<b>6</b>	<b>11001</b>	<b>72</b>
<b>RURAL</b>													
	65+74.00	TO	79+25.95	26	1351.95	3906	165	329	2637	1.2	2.0	3906	
	79+25.95	TO	89+89.97	27 & VARIES	1064.02	3192	135	269	2155	1.0	1.6	3192	
STA. EQUATION 89+89.97 (BK) = 92+45.38 (AH)	92+45.38	TO	93+62.05	27 & VARIES	116.67	350	15	30	237	0.2	0.2	350	
	93+62.05	TO	423+94.50	26	33,032.45	95,427	4008	8016	64414	28.7	47.8	95427	14
STRUCTURE OMISSION - S.N. 053-2557	424+05.50	TO	436+17.00	26	1,211.50	3,500	147	294	2363	1.1	1.8	3500	14
BRIDGE OMISSION - S.N. 053-0075	437+33.00	TO	583+00.00	26	14,567.00	42,082.44	1768	3535	28406	12.7	21.1	42082	29
<b>SUBTOTALS</b>						<b>148,457</b>	<b>6,238</b>	<b>12,473</b>	<b>100,212</b>	<b>44.9</b>	<b>74.5</b>	<b>148,457</b>	<b>58</b>
<b>TOTALS</b>						<b>159,458</b>	<b>6,703</b>	<b>13,401</b>	<b>107,640</b>	<b>48.4</b>	<b>80.2</b>	<b>159,458</b>	<b>130</b>

HOT MIX ASPHALT SHOULDERS										
LOCATION	SIDE	LENGTH	WIDTH	AREA	HMA SURF REM 1 1/2"	BIT MATLS PR CT	LEVEL BINDER (M.M.) 3/4"	HMA SURFACE MIX "C"		
				SQ YD	SQ YD	POUND	TON	TON		
<b>RURAL</b>										
79+40.00 TO 92+95.30	RT	1099.89	6	733	733	495	31	62		
79+40.00 TO 92+95.30	LT	1099.89	6	733	733	495	31	62		
432+20.00 TO 435+87.67	RT	367.67	5	204	204	138	9	18		
432+20.00 TO 435+87.67	LT	367.67	5	204	204	138	9	18		
437+62.33 TO 441+15.00	RT	352.67	5	196	196	133	9	17		
437+62.33 TO 441+15.00	LT	352.67	5	196	196	133	9	17		
<b>TOTALS</b>				<b>2267</b>	<b>2267</b>	<b>1532</b>	<b>98</b>	<b>194</b>		

\* STA. EQUATION 89+89.97 BK = 92+45.38 AH

PAVEMENT PATCHING	
LOCATION	CLASS D PATCHES TYPE II, 16 INCH SQ YD.
BETWEEN N. 2300 E. ROAD AND S.N. 053-2557	25
BETWEEN S.N. 053-0075 AND N. 2500 E. ROAD	25
BETWEEN N. 2500 E. ROAD AND N. 2600 E. ROAD	25
<b>TOTAL</b>	<b>75</b>



AGGREGATE SHOULDERS					
LOCATION	SIDE	LENGTH	WIDTH	AGGREGATE SHOULDERS, TYPE B	
		FEET	FEET	TONS	
<b>URBAN</b>					
15+85.00 TO 19+10.00	RT	325.00	3	9.3	
15+85.00 TO 21+20.00	LT	535.00	3	15.3	
<b>SUBTOTALS</b>				<b>24.6</b>	
<b>RURAL</b>					
29+05.00 TO 54+80.00	RT	2575.00	3	80.2	
29+05.00 TO 56+31.00	LT	2726.00	3	99.6	
60+60.00 TO 60+90.00	RT	30.00	3	0.9	
62+00.00 TO 62+75.82	RT	75.82	3	4.6	
60+90.00 TO 62+75.82	LT	185.82	3	9.2	
STA. EQUATION -- STA. 62+75.82 (BK) = STA. 64+90.00 (AH)					
64+90.00 TO 79+40.00	RT	1450	3	52.1	
64+90.00 TO 79+40.00	LT	1450	3	58.9	
STA. EQUATION -- STA. 89+89.40 (BK) = STA. 92+45.38 (AH)					
92+95.30 TO 113+02.00	RT	2,007	3	68.6	
92+95.30 TO 113+02.00	LT	2,007	3	76.3	
113+02.00 TO 432+20.00	RT	31,918	3	1137.1	
113+02.00 TO 432+20.00	LT	31,918	3	1216.1	
441+15.00 TO 577+00.00	RT	13,585	3	470.1	
441+15.00 TO 577+00.00	LT	13,585	3	502.1	
577+00.00 TO 583+00.00	RT	600	3	18.5	
577+00.00 TO 583+00.00	LT		3	4.9	
<b>SUBTOTALS</b>				<b>3799.3</b>	
<b>TOTALS</b>				<b>3823.8</b>	

INCIDENTAL SCHEDULE									
ENTRANCE/ DESCRIPTION	RT/LT	EST LOG MILES	STATION STANDARD	AREA SQ YD	INCIDENTAL SURFACE TON	BIT. MAT'LS. (PRIME COAT) POUND	MIX. CRACKS JTS. & FLWY TON	AGG. SURF. CSE. TYPE B TON	HMA SURFACE REM. 1 1/2" SQ YD
<b>PE/CE - URBAN</b>									
PEARL ST		0.00	15+00		0.0	0.0	0.0	0.0	
PE/AGG	RT	0.09	19+61	18	1.5	9.0	0.1	0.1	
PE/AGG ****	RT	0.10	20+32	19	1.6	9.0	0.1	0.1	
PE/AGG	RT	0.11	20+96	19	1.6	9.0	0.1	0.1	
PE/AGG	RT	0.14	22+24	WORK DONE UNDER DIFFERENT CONTRACT					
CE/AGG	RT	0.16	23+24	WORK DONE UNDER DIFFERENT CONTRACT					
PE/AGG	RT	0.25	28+20	23	1.9	11.0	0.1	0.1	
PE/AGG	LT	0.25	28+20	14	1.2	7.0	0.1	0.1	
PE/AGG	LT	0.48	40+34	36	3.0	17.0	0.1	0.1	
PE/AGG	RT	0.49	40+61	50	4.2	23.0	0.1	0.1	
CE/BIT	RT	0.49	40+87	80	6.7	36.0	0.1	0.1	80
PE/AGG	LT	0.49	40+87	26	2.2	12.0	0.1	0.1	
PE/CONC.	RT	0.53	42+72	NO WORK - MATCH PROPOSED HMA SHLD RESURFACING TO CONCRETE ENTRANCE					
PE/CONC.	RT	0.54	43+25	NO WORK - MATCH PROPOSED HMA SHLD RESURFACING TO CONCRETE ENTRANCE					
PE/AGG	LT	0.54	43+25	33	2.8	15.0	0.1	0.1	
PE/AGG	RT	0.55	44+04	14	1.2	7.0	0.1	0.1	
PE/BIT	RT	0.57	44+83	31	2.6	14.0	0.1	0.1	31
PE/BIT	RT	0.58	45+36	8	0.7	4.0	0.1	0.1	8
CENTRAL ST		0.59	46+15		0.0	0.0	0.0	0.0	
PE/CONC.	RT	0.63	48+26	NO WORK - MATCH PROPOSED HMA SHLD RESURFACING TO CONCRETE ENTRANCE					
PE/CONC.	RT	0.65	49+32	NO WORK - MATCH PROPOSED HMA SHLD RESURFACING TO CONCRETE ENTRANCE					
PE/CONC.	RT	0.65	49+43	NO WORK - MATCH PROPOSED HMA SHLD RESURFACING TO CONCRETE ENTRANCE					
PE/AGG ****	RT	0.90	62+26	14	1.2	7.0	0.1	0.1	
<b>SUBTOTALS</b>				<b>385.0</b>	<b>32.3</b>	<b>180.0</b>	<b>1.4</b>	<b>1.4</b>	<b>119.0</b>
<b>PE/CE - RURAL</b>									
PE/AGG	LT	0.91	65+20	42	3.5	19.0	0.1	0.1	
PE/CONC. ****	RT	0.94	66+52	56	4.7	26.0	0.1	0.1	
PE/AGG ****	RT	1.01	70+48	50	4.2	23.0	0.1	0.1	
PE/AGG ****	RT	1.04	71+80	44	3.7	20.0	0.1	0.1	
PE/AGG ****	RT	1.13	76+81	42	3.5	19.0	0.1	0.1	
PE/AGG ****	RT	1.14	77+34	59	5.0	27.0	0.1	0.1	
PE/AGG	LT	1.89	119+50	50	4.2	23.0	0.1	0.1	
PE/AGG	RT	2.03	126+99	40	3.4	18.0	0.1	0.1	
PE/AGG ****	LT	2.41	146+95	60	5.0	27.0	0.1	0.1	
PE/AGG	LT	2.81	168+07	143	12.0	65.0	0.1	0.1	
PE/AGG	LT	3.17	187+08	28	2.4	13.0	0.1	0.1	
PE/AGG	LT	3.17	187+24	33	2.8	15.0	0.1	0.1	
PE/AGG	LT	3.47	202+87	23	1.9	11.0	0.1	0.1	
PE/AGG ****	LT	3.49	203+98	62	5.2	28.0	0.1	0.1	
CE	RT	4.75	270+50	96	8.1	44.0	0.1	0.1	
PE/AGG	LT	5.18	293+21	39	3.3	18.0	0.1	0.1	
PE/AGG	LT	5.49	309+58	23	1.9	11.0	0.1	0.1	
PE/AGG ****	RT	6.15	344+42	40	3.4	18.0	0.1	0.1	
PE/AGG ****	RT	6.43	358+94	48	4.0	22.0	0.1	0.1	
PE/AGG	LT	7.45	412+80	0	0.0	0.0	0.0	0.0	
PE/AGG	LT	7.49	415+18	70	5.9	32.0	0.1	0.1	
PE/AGG	LT	7.83	433+13	45	3.8	21.0	0.1	0.1	
PE/AGG	RT	8.05	444+74	48	4.0	22.0	0.1	0.1	
PE/AGG	LT	8.06	445+01	76	6.4	35.0	0.1	0.1	
PE/AGG ****	RT	8.60	473+78	74	6.2	34.0	0.1	0.1	
PE/AGG	LT	9.85	539+78	26	2.2	12.0	0.1	0.1	
PE/AGG	LT	9.86	540+31	24	2.0	11.0	0.1	0.1	
PE/AGG	RT	9.94	544+54	42	3.5	19.0	0.1	0.1	
PE/AGG	LT	10.00	547+70	23	1.9	11.0	0.1	0.1	
PE/AGG	LT	10.36	566+71	34	2.9	16.0	0.1	0.1	
<b>SUBTOTALS</b>				<b>1440.0</b>	<b>121.0</b>	<b>660.0</b>	<b>2.9</b>	<b>2.9</b>	<b>0.0</b>
<b>MAILBOX TURNOUTS - URBAN</b>									
19+10 TO 21+20	RT			185	15.5	84.0	0.1	0.1	
21+20 TO 22+89	RT			WORK DONE UNDER DIFFERENT CONTRACT					
22+89 TO 22+98	RT			WORK DONE UNDER DIFFERENT CONTRACT					
32+69.19	RT			22	1.8	10.0	0.1	0.1	
44+68 TO 50+57	RT			387	32.5	175.0	0.2	0.2	
51+23 TO 53+04	RT			227	19.1	103.0	0.1	0.2	
<b>SUBTOTALS</b>				<b>821</b>	<b>69</b>	<b>372</b>	<b>1</b>	<b>1</b>	<b>0</b>
<b>MAILBOX TURNOUTS - RURAL</b>									
131+17	LT			26	2.2	12.0	0.1	0.1	
297+39	RT			26	2.2	12.0	0.1	0.1	
419+36	RT			26	2.2	12.0	0.1	0.1	
437+31	RT			26	2.2	12.0	0.1	0.1	
449+19	RT			26	2.2	12.0	0.1	0.1	
548+72	LT			26	2.2	12.0	0.1	0.1	
<b>SUBTOTALS</b>				<b>153.6</b>	<b>12.9</b>	<b>72.0</b>	<b>0.6</b>	<b>0.6</b>	<b>0.0</b>
<b>TOTALS</b>				<b>2800</b>	<b>235</b>	<b>1284</b>	<b>5.4</b>	<b>6</b>	<b>119</b>

\*\*\*\* ENTRANCE APRON INCLUDES MAILBOX TURNOUT

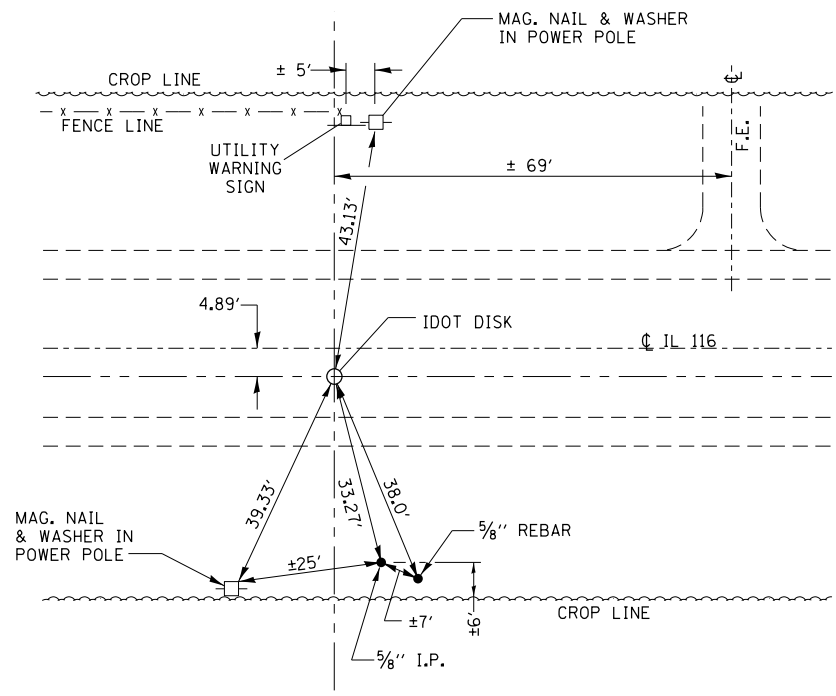
FILE NAME =	USER NAME = Schwankerg	DESIGNED -	REVISED -	<b>STATE OF ILLINOIS DEPARTMENT OF TRANSPORTATION</b>	<b>SCHEDULES</b>				F.A.P. RTE.	SECTION	COUNTY	TOTAL SHEETS	SHEET NO.		
c:\pw\work\p\dot\schwankerg\d0256657\066752-sht-schedule.dgn		DRAWN -	REVISED -		SCALE:	SHEET NO.	OF	SHEETS	STA.	TO STA.	681	(113,114)RS-4	LIVINGSTON	18	9
		CHECKED -	REVISED -												
		DATE -	REVISED -												

ILLINOIS FED. AID PROJECT

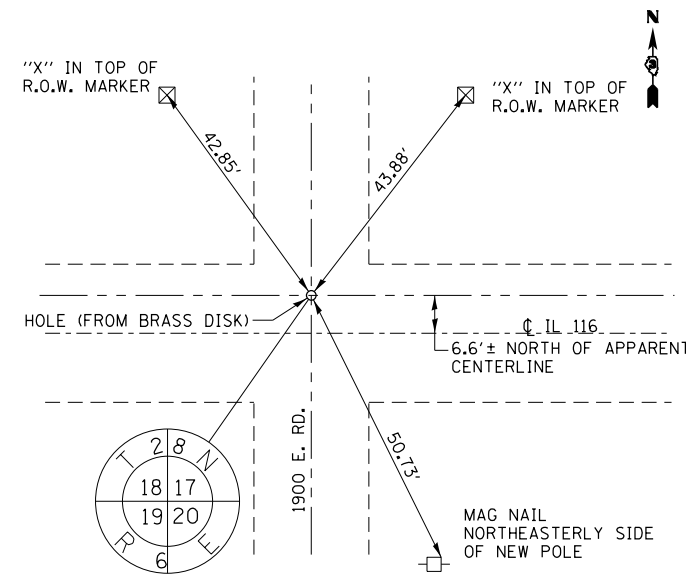
SEEDING SCHEDULE								
LOCATION	SIDE		AREA	SEEDING CLASS 2A	NITROGEN FERTILIZR	PHOSPHORUS FERTILIZR	POTTASSIUM FERTILIZR	EROSION CONTROL BLANKET
		STATION	SQ YD	ACRE	LB	LB	LB	SQ YD
URBAN								
PEARL ST.	RT	BIT	15+00	0	0	0	0	0
RURAL								
CENTER DR	RT	BIT	46+15	13	0.003	0.24	0.24	13
CENTER DR	LT	PCC	46+15	0				0
N BAUER RD	RT	BIT	53+00	28	0.006	0.52	0.52	28
E HOWARD ST	RT	BIT	55+47	0				0
N 1750 E RD	RT	BIT	61+83	0				0
N 1750 E RD	LT	BIT	81+00	0				0
E 1800 N RD	LT	BIT	89+22	40	0.008	0.74	0.74	40
N 1900 E RD	RT	A-3	164+92	27	0.006	0.50	0.50	27
N 1900 E RD	LT	A-3	164+92	23	0.005	0.43	0.43	23
N 2000 F RD	RT	A-3	217+40	26	0.005	0.48	0.48	26
N 2000 E RD	LT	A-3	217+40	26	0.005	0.48	0.48	26
N 2050 E RD	LT	AGG	243+60	27	0.006	0.50	0.50	27
CO HWY 6	LT	BIT	270+00	33	0.007	0.61	0.61	33
N 2100 E RD	RT	BIT	270+00	30	0.006	0.56	0.56	30
N 2200 E RD	RT	AGG	323+09	20	0.004	0.37	0.37	20
N 2200 E RD	LT	BIT	323+09	26	0.005	0.48	0.48	26
N 2300 E RD	RT	BIT	376+63	26	0.005	0.48	0.48	26
N 2300 E RD	LT	BIT	376+63	26	0.005	0.48	0.48	26
N 2500 E RD	RT	BIT	481+57	26	0.005	0.48	0.48	26
N 2500 E RD	LT	BIT	481+57	26	0.005	0.48	0.48	26
N 2600 E RD	RT	BIT	534+24	24	0.005	0.45	0.45	24
N 2600 E RD	LT	BIT	534+24	24	0.005	0.45	0.45	24
TOTALS				471	0.10	9	9	471

SIDEROAD SCHEDULE										
LOCATION	SIDE		AREA	INCID. HMA SURF.	BIT. MAT'LS. (PRIME COAT)	MIX. CRACKS JOINTS, & FLWY	TEMP RAMP	HMA SURF REM 1 1/2"	FURN. EXCAV.	
		STATION	SQ YD	TON	POUND	TON	SQ YD	SQ YD	CU YD	
URBAN										
PEARL ST.	RT	BIT	15+00	0	0.0	0.0	0	0	0	
RURAL										
CENTER DR	RT	BIT	46+15	47	4.0	21.0	20.6	47	1	
CENTER DR	LT	PCC	46+15	0	0.0	0.0	0	0		
N BAUER RD	RT	BIT	53+00	127	11.0	58.0	16.1	127	2	
E HOWARD ST	RT	BIT	55+47	186	16.0	84.0	19.4	186		
N 1750 E RD	RT	BIT	61+83	186	16.0	84.0	19.4	186		
N 1750 E RD	LT	BIT	81+00	151	13.0	68.0	16.7	151		
E 1800 N RD	LT	BIT	89+22	180	16.0	81.0	11.1	180	3	
N 1900 E RD	RT	A-3	164+92	108	10.0	49.0	13.3	108	2	
N 1900 E RD	LT	A-3	164+92	101	9.0	46.0	11.1	101	3	
N 2000 F RD	RT	A-3	217+40	108	10.0	49.0	11.7	108	2	
N 2000 E RD	LT	A-3	217+40	108	10.0	49.0	12.8	108	3	
N 2050 E RD	LT	AGG	243+60	117	10.0	53.0	9.4	0	3	
CO HWY 6	LT	BIT	270+00	148	13.0	67.0	16.1	148	4	
N 2100 E RD	RT	BIT	270+00	134	12.0	61.0	18.3	134	4	
N 2200 E RD	RT	AGG	323+09	84	8.0	38.0	9.4	0	3	
N 2200 E RD	LT	BIT	323+09	112	10.0	51.0	11.1	112	3	
N 2300 E RD	RT	BIT	376+63	112	10.0	51.0	11.7	112	3	
N 2300 E RD	LT	BIT	376+63	112	10.0	51.0	11.7	112	3	
N 2500 E RD	RT	BIT	481+57	112	10.0	51.0	11.7	112	4	
N 2500 E RD	LT	BIT	481+57	112	10.0	51.0	11.7	112	4	
N 2600 E RD	RT	BIT	534+24	98	9.0	45.0	11.1	98	3	
N 2600 E RD	LT	BIT	534+24	98	9.0	45.0	11.1	98	3	
TOTALS				2,541	226	1,153	286	2,340	55	

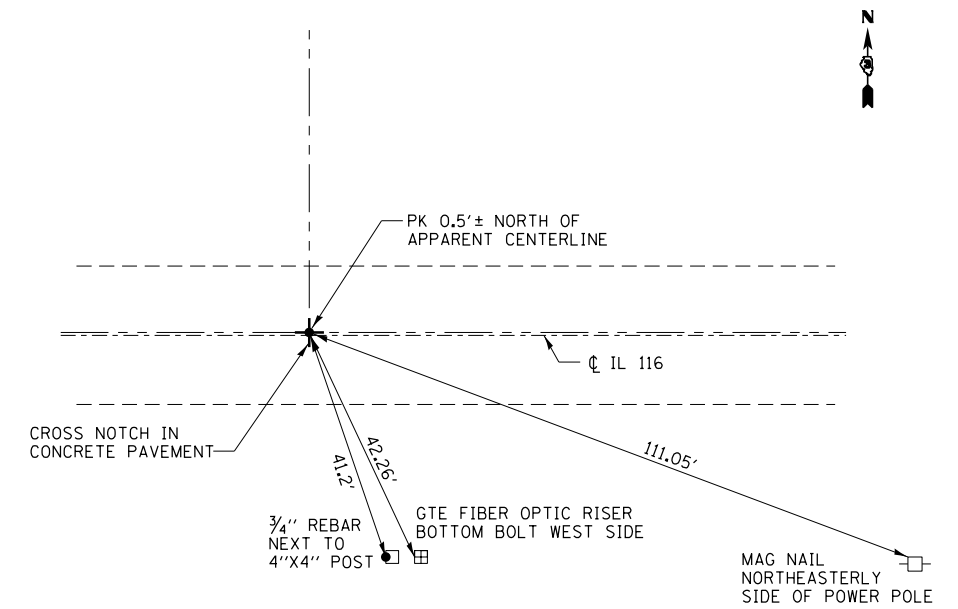
PAVEMENT MARKING													
STA. TO STA.	LENGTH FOOT	SHORT TERM PAVT MARK FOOT	TEMPORARY PAVEMENT MARKING 4 INCH		TEMP PAVEMENT MARKING 6 INCH	POLYUREA PAVEMENT MARKING 4 INCH		POLYUREA PAVEMENT MARKING 6 INCH	RAISED REFLECT PAVT MARKERS	RAISED REFLECT PAVEMENT MARKERS (BRIDGE)	RAISED REFLECT PAVEMENT MARKERS REM	WORK ZONE PAVEMENT MARKING REMOVAL	
			WHITE FOOT	YELLOW FOOT	YELLOW FOOT	WHITE FOOT	YELLOW FOOT	YELLOW FOOT	EACH	EACH	EACH	SQ FT	
URBAN													
15+85.00 TO 24+56.25	871	264	1742.5		218	1743		218	11		11	88	
SUBTOTALS			871	264	1,743		218	1,743	11		11	88	
RURAL													
SN 053-0159 24+56.25 TO 25+26.75	71	993	6604	2146	400	141	2,146	400	40		36	331	
SN 053-0070 58+28.50 TO 59+01.50	73	114	749	749		146	749		3	1	3	38	
STA. EQUATION 62+75.82 (BK) = 64+91.04 (AH)	2499	750	4998	3578	180	4998	3578	180	32		28	250	
STA. EQUATION 89+89.97 (BK) = 92+45.38 (AH)	34,372	10314	68,743	5,582	8520	68,743	5,582	8,520	430		290	3438	
SN 053-0075 436+17.00 TO 437+33.00	116	4371	29,134	1,500	3642	232	29,134	1,500	183	2	93	1457	
437+33.00 TO 583+00.00	14567												
SUBTOTALS			55,373	16,542	110,227	13,555	12,742	110,746	13,701	12,742	688	450	5,514
SHORT TERM PAVEMENT MARKING QUANTITIES FOR 3 APPLICATIONS (MILLING, LEVELING BINDER, AND SURFACE)													
TOTALS			56,244	16,806	111,970	13,555	12,960	112,489	13,701	12,960	699	461	5,602



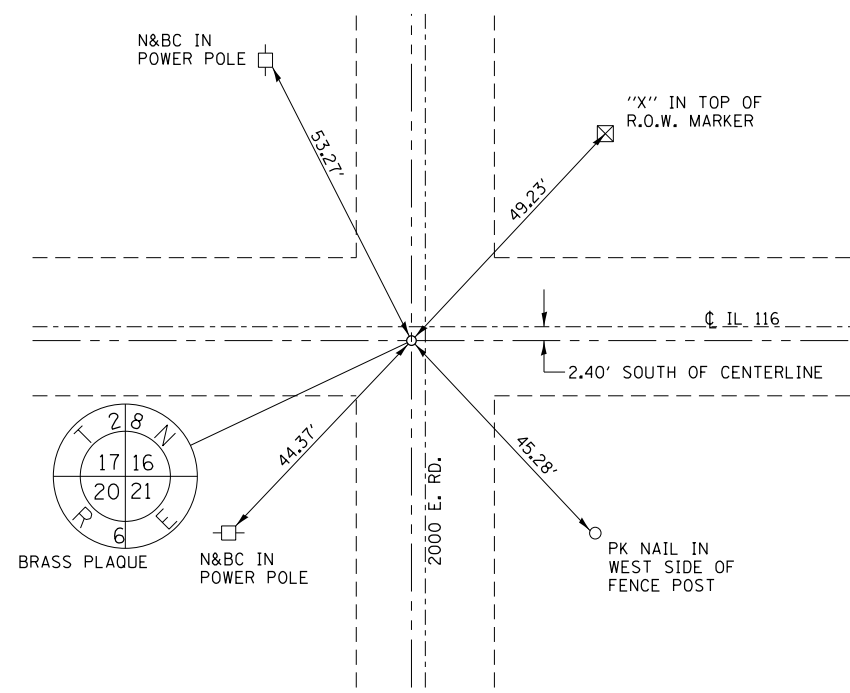
EAST QUARTER CORNER  
SECTION 23 T28N R5E



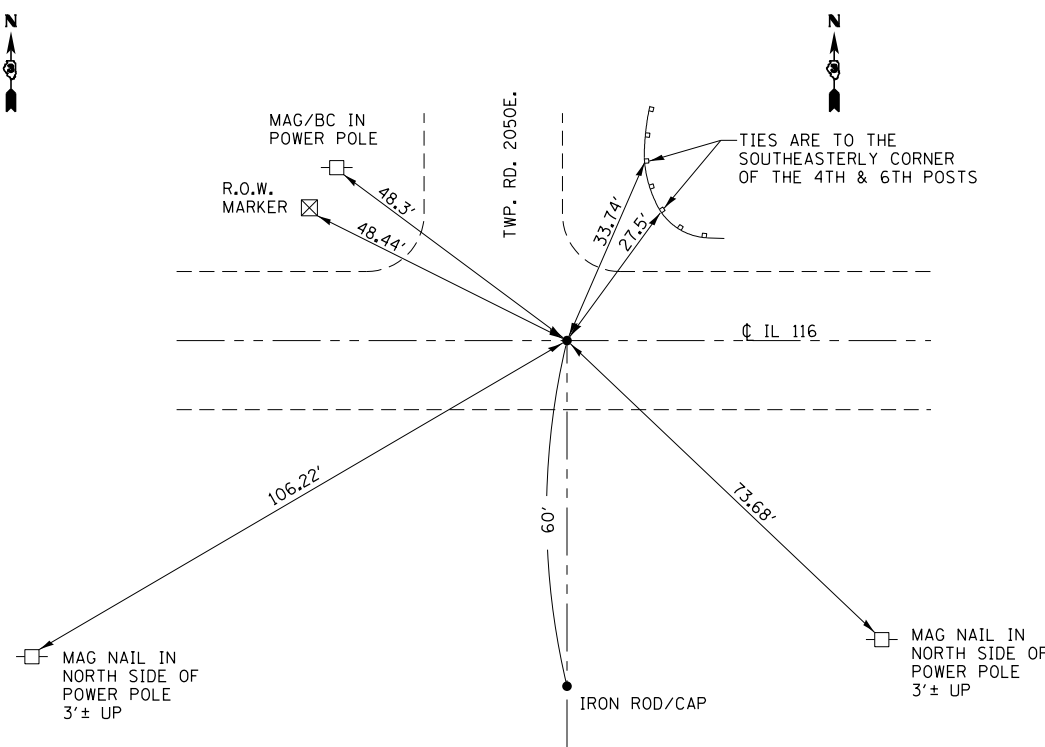
SOUTHEAST CORNER  
SECTION 18 T28N R6E



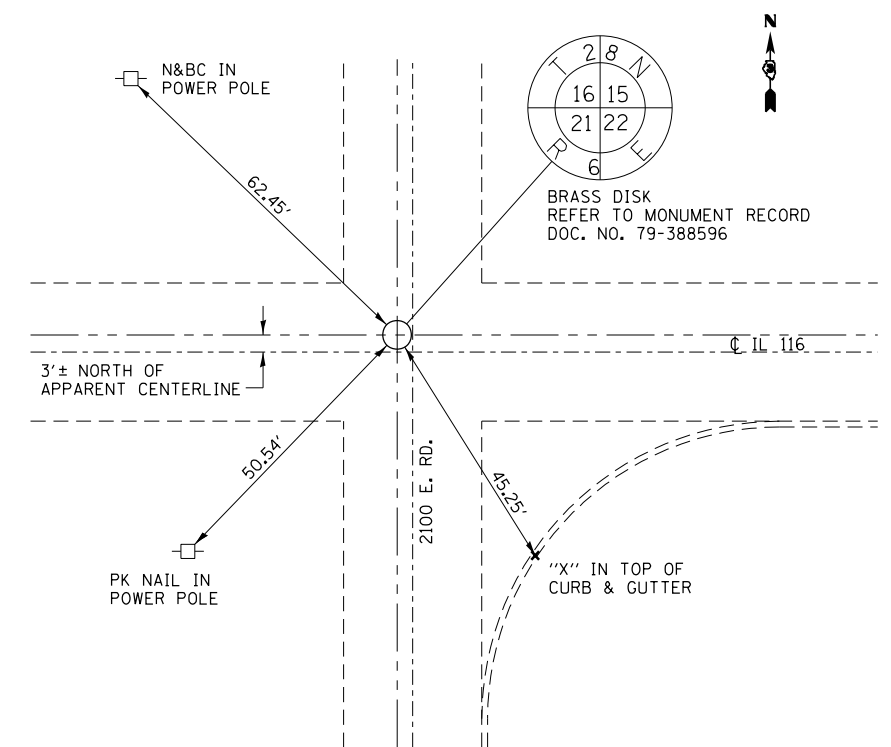
SOUTH QUARTER CORNER  
SECTION 17 T28N R6E



SOUTHWEST CORNER  
SECTION 16 T28N R6E



NORTH QUARTER CORNER  
SECTION 21 T28N R6E



SOUTHEAST CORNER  
SECTION 16 T28N R6E

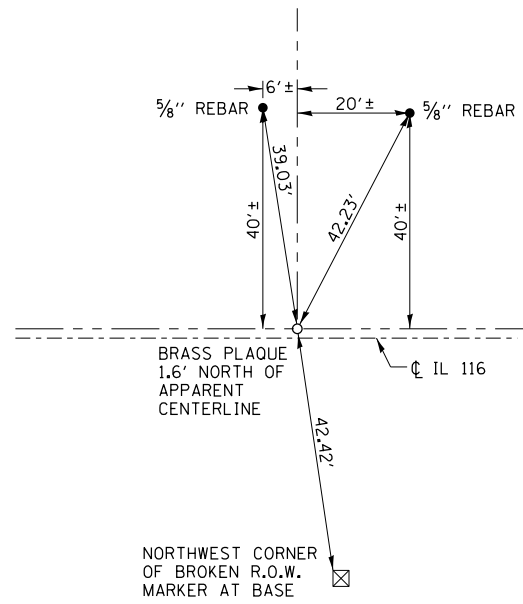
FILE NAME =	USER NAME = Schwankerg	DESIGNED -	REVISED -
ei:\pw\work\p\midot\schwankerg\d0256657\066752-sht-details.DGN		DRAWN -	REVISED -
	PLOT SCALE = 100.0000' / 1".	CHECKED -	REVISED -
	PLOT DATE = 6/6/2014	DATE -	REVISED -

STATE OF ILLINOIS  
DEPARTMENT OF TRANSPORTATION

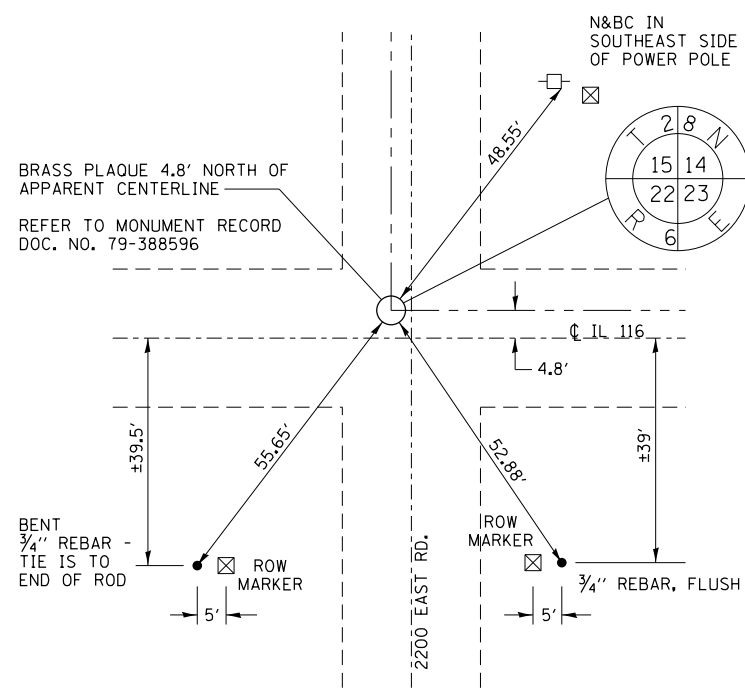
PERMANENT SURVEY MARKERS  
TIE POINTS

SCALE: SHEET NO. OF SHEETS STA. TO STA.

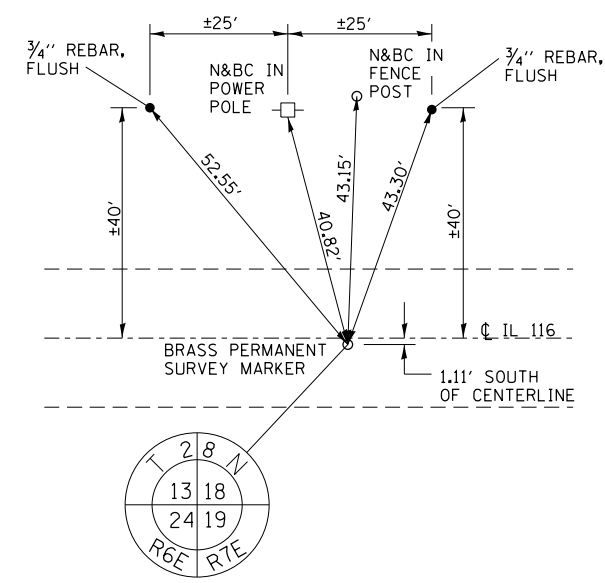
F.A.P. RTE.	SECTION	COUNTY	TOTAL SHEETS	SHEET NO.
681	(113,114)RS-4	LIVINGSTON	18	11
CONTRACT NO. 66752				
ILLINOIS FED. AID PROJECT				



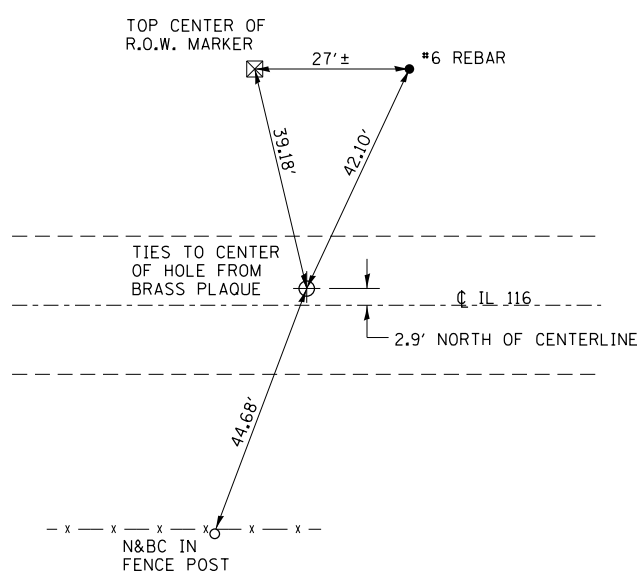
SOUTH QUARTER CORNER  
SECTION 15 T28N R6E



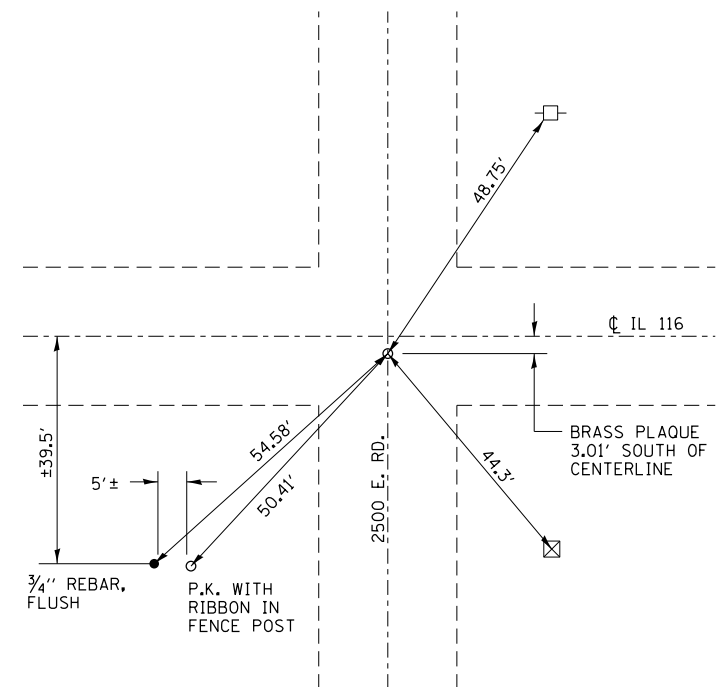
SOUTHEAST CORNER  
SECTION 15 T28N R6E



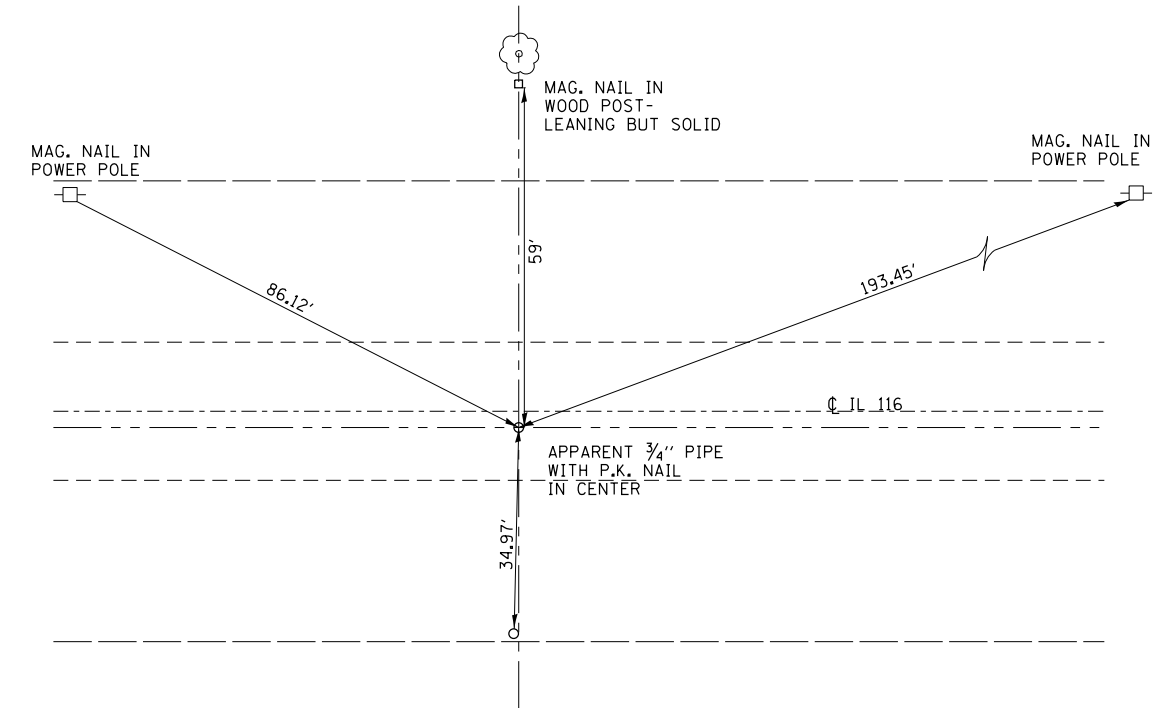
SOUTHWEST CORNER  
SECTION 18 T28N R7E



SOUTH QUARTER CORNER  
SECTION 18 T28N R7E



SOUTHWEST QUARTER CORNER  
SECTION 17 T28N R7E



SOUTH QUARTER CORNER  
SECTION 17 T28N R7E

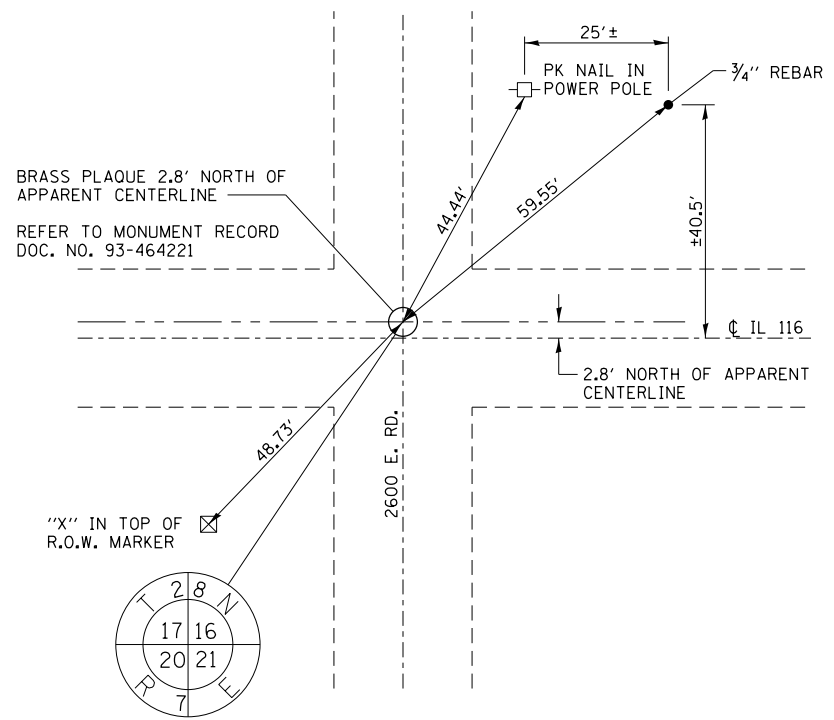
FILE NAME =	USER NAME = Schwankerg	DESIGNED -	REVISED -
c:\pw\work\p\dot\schwankerg\d0256657\066752-sht-details.DGN		DRAWN -	REVISED -
	PLOT SCALE = 100.0000' / in.	CHECKED -	REVISED -
	PLOT DATE = 6/6/2014	DATE -	REVISED -

STATE OF ILLINOIS  
DEPARTMENT OF TRANSPORTATION

PERMANENT SURVEY MARKERS  
TIE POINTS

SCALE: SHEET NO. OF SHEETS STA. TO STA.

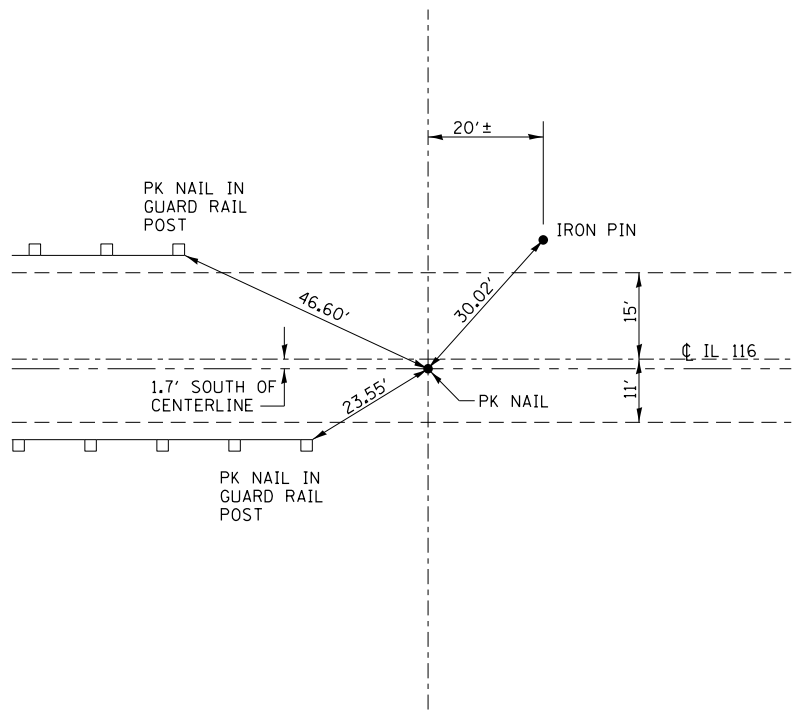
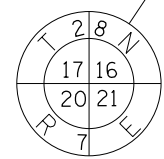
F.A.P. RTE.	SECTION	COUNTY	TOTAL SHEETS	SHEET NO.
681	(113,114)RS-4	LIVINGSTON	18	12
			CONTRACT NO. 66752	
ILLINOIS FED. AID PROJECT				



SOUTHWEST CORNER  
SECTION 16 T28N R7E

BRASS PLAQUE 2.8' NORTH OF  
APPARENT CENTERLINE  
REFER TO MONUMENT RECORD  
DOC. NO. 93-464221

"X" IN TOP OF  
R.O.W. MARKER



NORTH QUARTER CORNER  
SECTION 21 T28N R7E

FILE NAME =	USER NAME = Schwankerg	DESIGNED -	REVISED -
ci:\pw\work\p\idot\schwankerg\d0256657\066752-sht-details.DGN		DRAWN -	REVISED -
	PLOT SCALE = 100.0000' / in.	CHECKED -	REVISED -
	PLOT DATE = 6/6/2014	DATE -	REVISED -

STATE OF ILLINOIS  
DEPARTMENT OF TRANSPORTATION

PERMANENT SURVEY MARKERS  
TIE POINTS

SCALE: SHEET NO. OF SHEETS STA. TO STA.

F.A.P. RTE.	SECTION	COUNTY	TOTAL SHEETS	SHEET NO.
681	(113,114)RS-4	LIVINGSTON	18	13
CONTRACT NO. 66752			ILLINOIS FED. AID PROJECT	

EXISTING CURVE DATA  
(FROM OLD PLANS)  
P.I. STA= 86+44.00  
 $\Delta$ = 89°22'00"  
D= 9°26'00"  
R= 608.08'  
T= 601.38'  
L= 947.35'  
E= 247.15'  
P.C. STA= 80+42.62  
P.T. STA= 89+89.97 (BK)=  
STA. 92+45.38 (AH)

STA. EQUATION AT P.T.  
STA. 62+75.82 (BK)=  
STA. 64+91.04 (AH)

STA. EQUATION AT P.T.  
STA. 89+89.97 (BK)=  
STA. 92+45.38 (AH)



**S.N. 053-0070  
BRIDGE OMISSION**  
STA. 56+35  
TO STA. 60+60

S.N. 053-2552  
STA. 78+25

S.N. 053-2575  
STA. 156+35

S.N. 053-2553  
STA. 168+48

N 1900 E  
STA. 164+92±

N 2000 E  
STA. 217+44

N 2050 E  
STA. 243+60

N 2100 E  
STA. 270+00

N 2200 E  
STA. 323+09

N 2300 E  
STA. 376+63

**S.N. 053-2557  
STRUCTURE OMISSION**  
STA. 423+94.50  
TO STA. 424+05.50

S.N. 053-2555  
STA. 300+04±

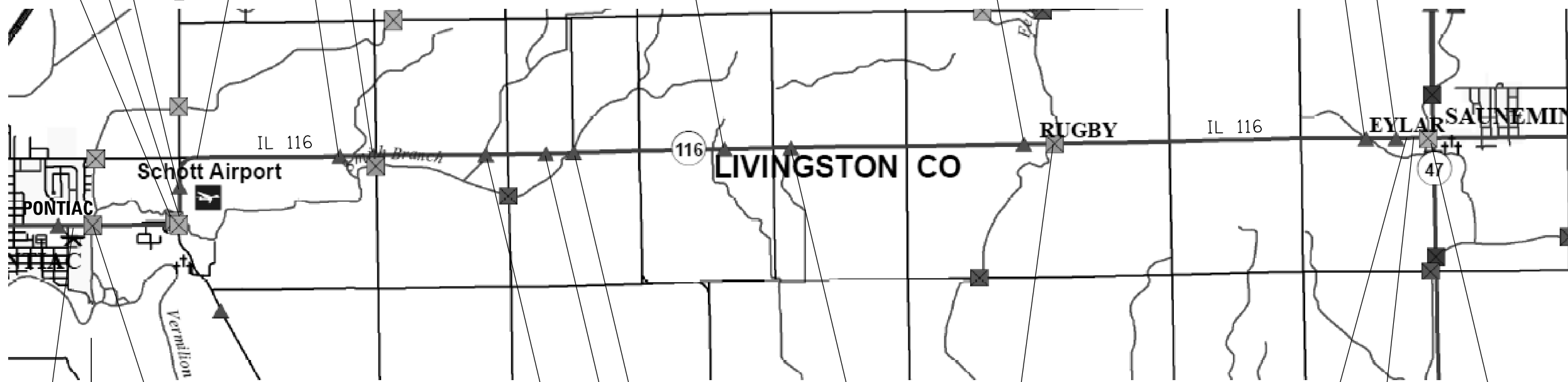
N 2500 E  
STA. 481+57

N 2600 E  
STA. 534+24

S.N. 053-2558  
STA. 562+50±

S.N. 053-2559  
STA. 572+02

IL 47



**BEGIN PROJECT  
STA. 15 + 85 +/-**  
(AT END OF GUTTER,  
EAST OF PEARL ST.)

**S.N. 053-0159  
BRIDGE OMISSION**  
STA. 21+20 TO STA. 29+05

S.N. 053-2022  
STA. 243+83

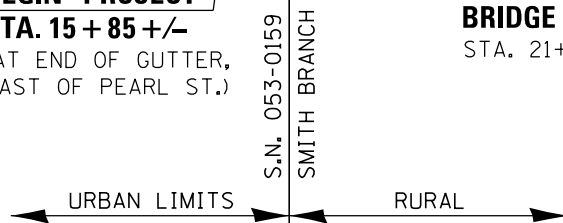
S.N. 053-2556  
STA. 338+29

**S.N. 053-0075  
BRIDGE OMISSION**  
FELKY SLOUGH  
STA. 436+17 TO STA. 437+33

S.N. 053-0181  
(BEYOND JOB LIMITS)

**END PROJECT  
STA. 583 + 00**  
(MATCH EXISTING PAVEMENT  
AT BEGINNING OF HMA SHOULDERS)

EXISTING CURVE DATA  
(FROM OLD PLANS)  
P.I. STA= 59+84  
 $\Delta$ = 89°12'00.00"  
D= 11°12'18.1"  
R= 511.34'  
T= 504.25'  
L= 796.07'  
E= 206.81'  
P.C. STA= 54+79.75  
P.T. STA= 62+75.82 (BK)=  
STA. 64+91.04 (AH)



STA. 577+70±  
RUMBLE STRIP

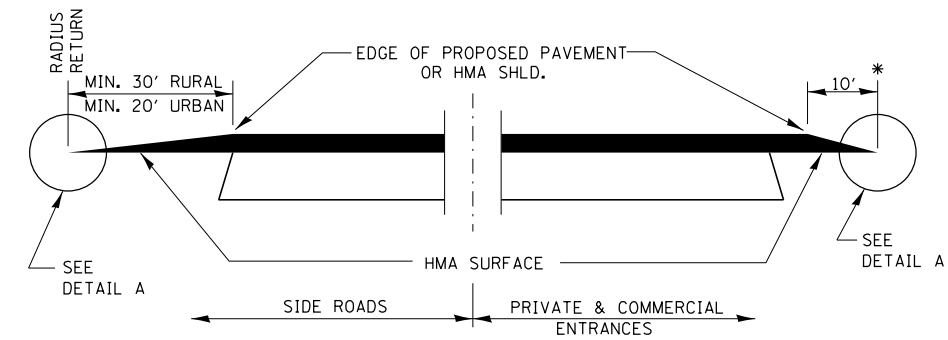


FILE NAME =	USER NAME = Schwankerg	DESIGNED -	REVISED -
c:\pw\work\p\idot\schwankerg\d0256657\066752-sht-details.DGN		DRAWN -	REVISED -
PLOT SCALE = 100.0000' / in.		CHECKED -	REVISED -
PLOT DATE = 6/6/2014		DATE -	REVISED -

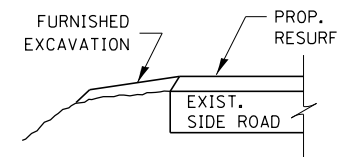
STATE OF ILLINOIS  
DEPARTMENT OF TRANSPORTATION

<b>SCHEMATIC</b>			
SCALE:	SHEET NO.	OF SHEETS	STA. TO STA.

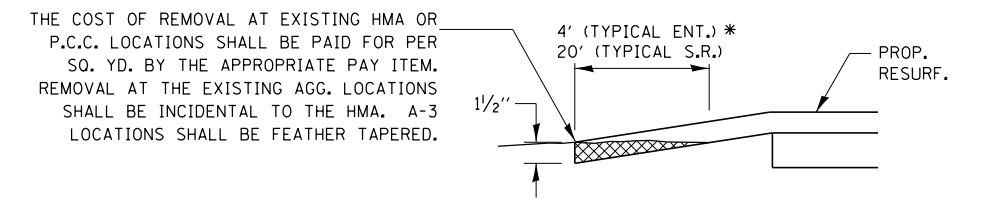
F.A.P. RTE.	SECTION	COUNTY	TOTAL SHEETS	SHEET NO.
681	(113,114)RS-4	LIVINGSTON	18	14
CONTRACT NO. 66752			ILLINOIS FED. AID PROJECT	



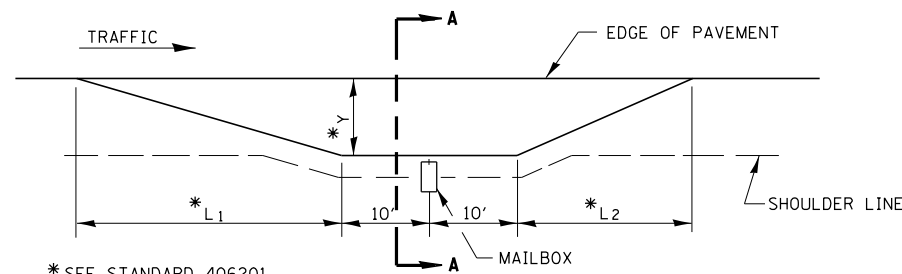
**SECTION A-A**  
**DETAILS AT ENTRANCES & SIDE ROADS**



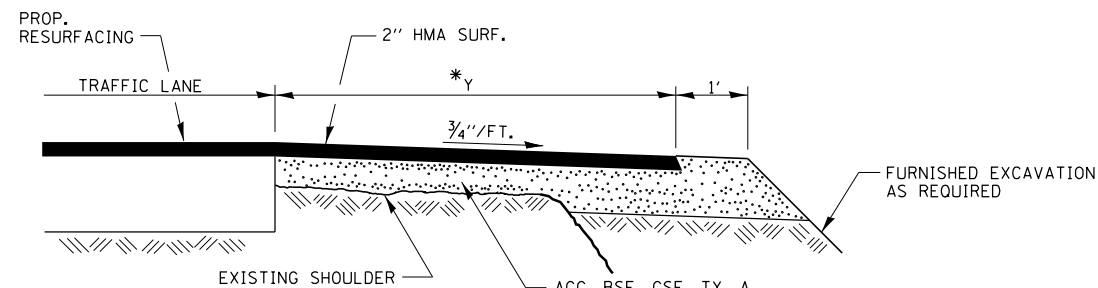
**SECTION B-B**



**DETAIL A**

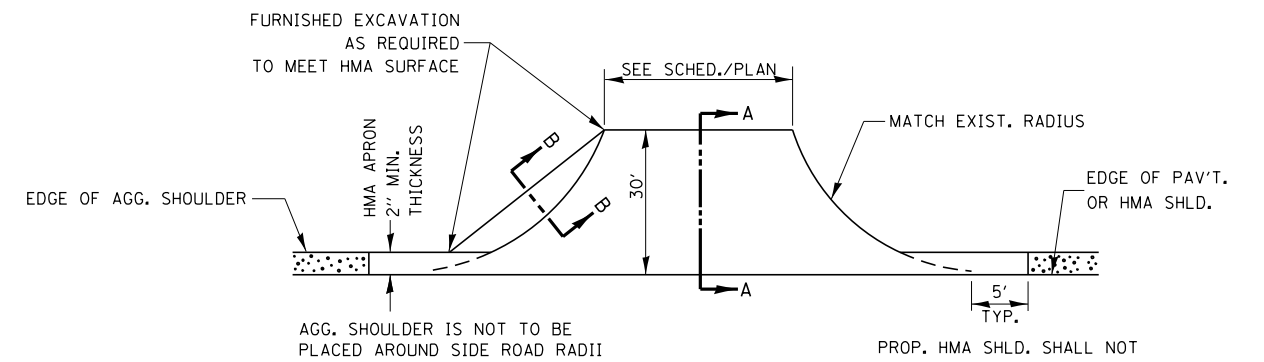


\* SEE STANDARD 406201



**SECTION A-A**

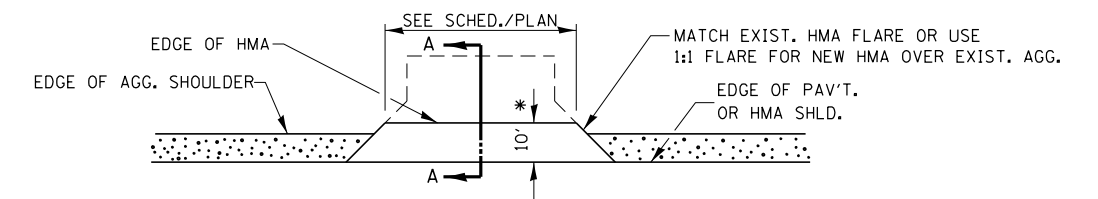
**RURAL MAILBOX TURNOUT DETAILS**



AGG. SHOULDER IS NOT TO BE PLACED AROUND SIDE ROAD RADII

PROP. HMA SHLD. SHALL NOT BE CONSTRUCTED THRU HMA SIDEROADS.

**PLAN AT SIDE ROADS**



**PLAN AT PRIVATE & COMMERCIAL ENTRANCES**

(DO NOT RESURFACE FIELD ENTRANCES)

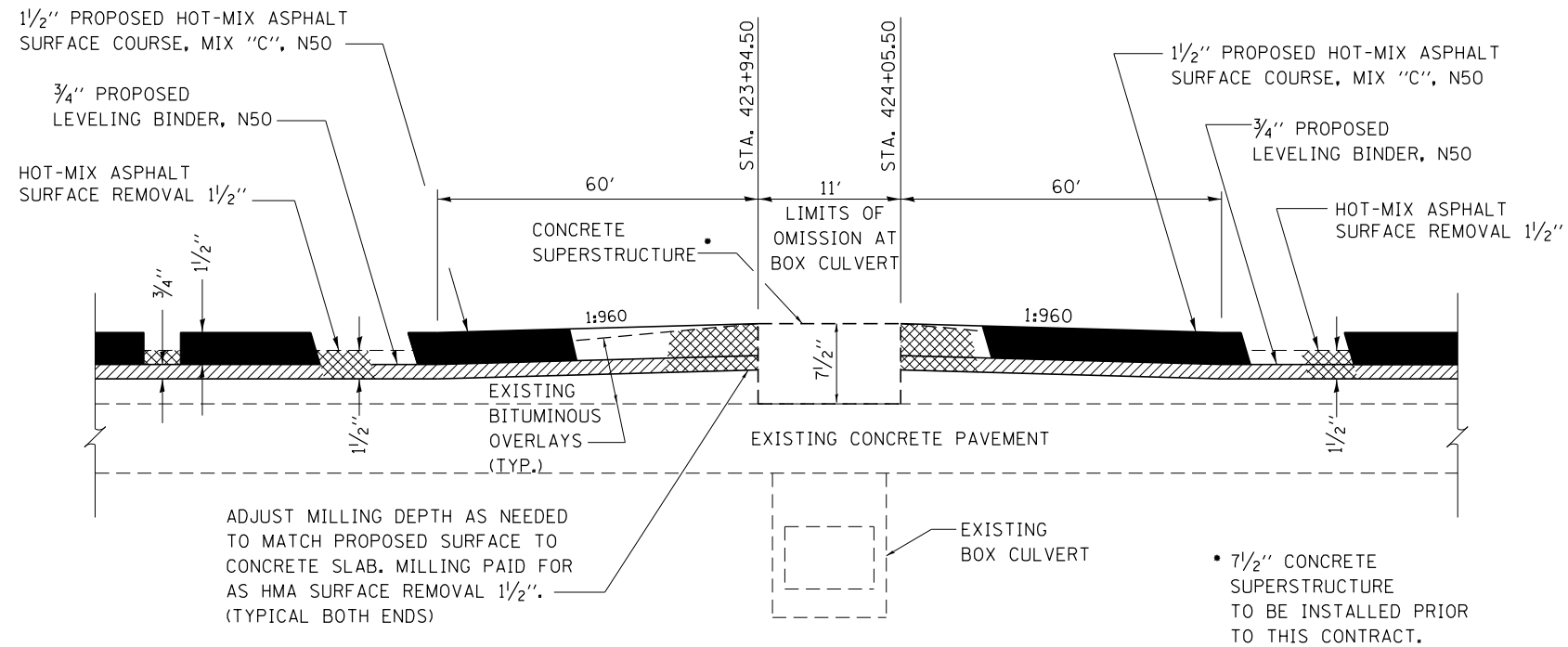
\* PROPOSED HMA RESURFACING AT PUBLIC EDUCATIONAL FACILITY ENTRANCES SHALL BE EXTENDED TO THE RIGHT-OF-WAY LIMITS.

FILE NAME =	USER NAME = Schwankerg	DESIGNED -	REVISED -
c:\pwork\pwork\pwork\schwankerg\d0256657\066752-sht-details.DGN		DRAWN -	REVISED -
	PLOT SCALE = 100.0000' / in.	CHECKED -	REVISED -
	PLOT DATE = 6/6/2014	DATE -	REVISED -

**STATE OF ILLINOIS**  
**DEPARTMENT OF TRANSPORTATION**

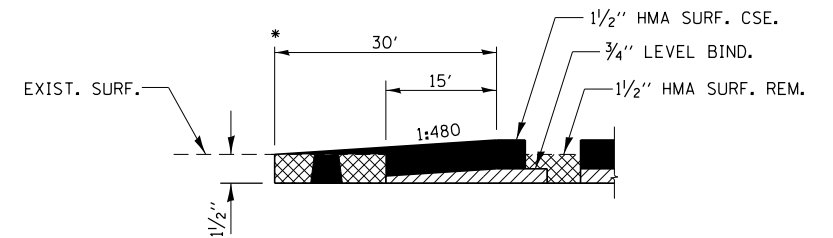
<b>DETAILS</b>			
SCALE:	SHEET NO.	OF SHEETS	STA. TO STA.

F.A.P. RTE.	SECTION	COUNTY	TOTAL SHEETS	SHEET NO.
681	(113,114)RS-4	LIVINGSTON	18	15
CONTRACT NO. 66752				
ILLINOIS FED. AID PROJECT				



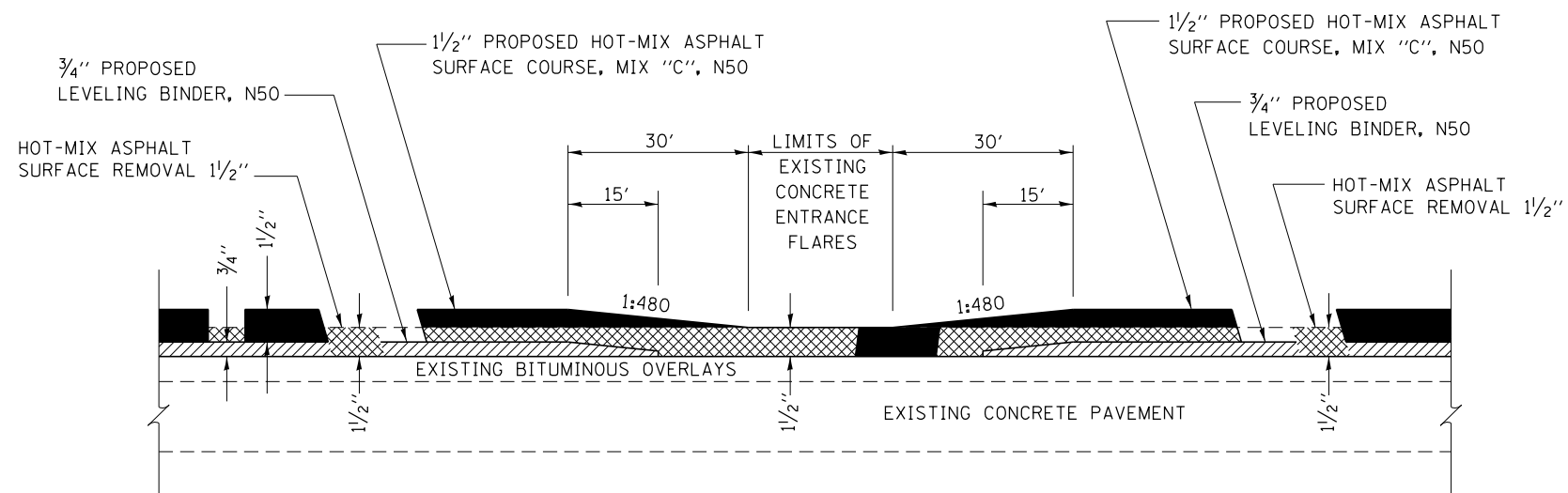
**DETAIL OF RESURFACING AT SN. 053-2557**

STA. 424+00  
NOT TO SCALE



**HMA SURFACE COURSE TAPER DETAIL**

- \* STA. 15+85
- \* STA. 21+20
- \* STA. 29+05
- \* STA. 56+35
- \* STA. 60+60
- \* STA. 436+17
- \* STA. 437+33
- \* STA. 583+00

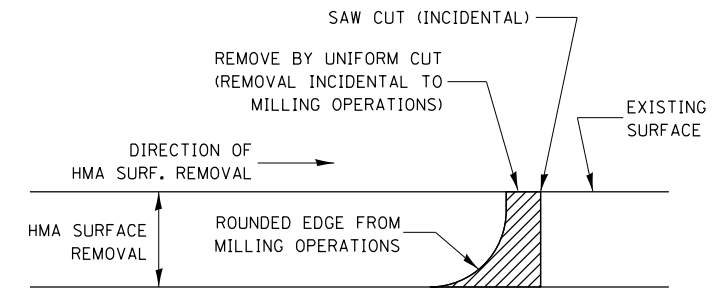


**DETAIL OF RESURFACING AT CONCRETE ENTRANCES**

NOT TO SCALE

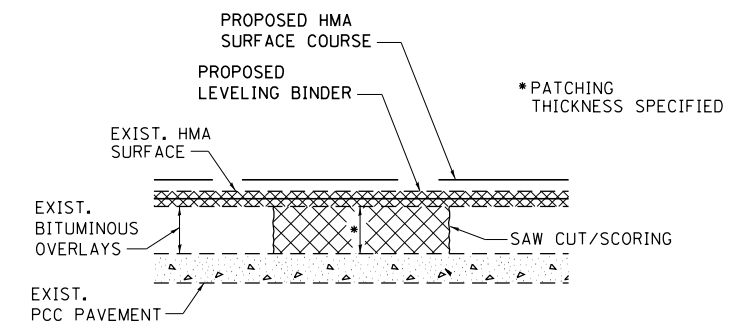
FILE NAME =	USER NAME = Schwankerg	DESIGNED -	REVISED -	<b>STATE OF ILLINOIS DEPARTMENT OF TRANSPORTATION</b>	<b>DETAILS</b>	F.A.P. RTE.	SECTION	COUNTY	TOTAL SHEETS	SHEET NO.
ci:\pw\work\p\idot\schwankerg\d0256657\066752-sht-details.DGN		DRAWN -	REVISED -			681	(113,114)RS-4	LIVINGSTON	18	16
PLOT SCALE = 100.0000' / 1\"/>										
PLOT DATE = 6/6/2014		DATE -	REVISED -			SCALE: SHEET NO. OF SHEETS STA. TO STA.		ILLINOIS FED. AID PROJECT		





NOTE:  
 WHEN MILLING OPERATIONS PRODUCE A ROUNDED EDGE,  
 THEN A SAW CUT SHALL BE USED TO MANUFACTURE  
 A PERPENDICULAR EDGE AS SHOWN IN THE DETAIL.  
 THE ENGINEER SHALL BE THE SOLE JUDGE  
 CONCERNING THE USE OF THIS DETAIL

### HMA DETAIL AT BUTT JOINTS

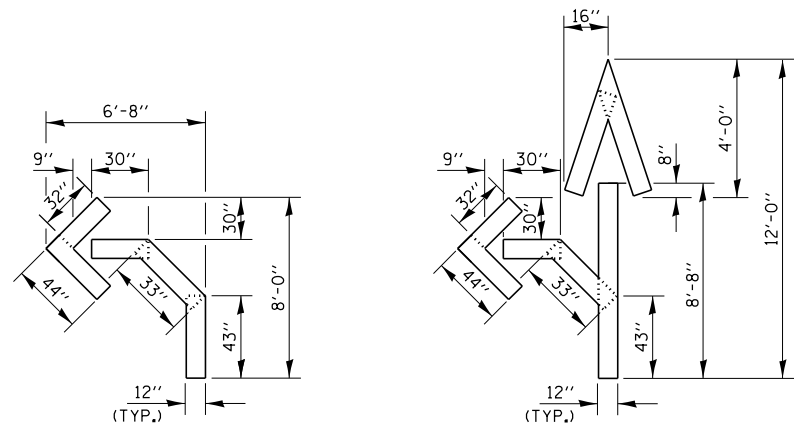


#### SEQUENCE OF CONSTRUCTION

1. MILL THE EXISTING HMA SURFACE 1 1/2".
2. REMOVE FULL DEPTH BITUMINOUS AND CONCRETE THEN REPLACE WITH CLASS D PATCHES.
3. RESURFACE WITH 3/4" LEVELING BINDER AND 1 1/2" HMA SURFACE COURSE.

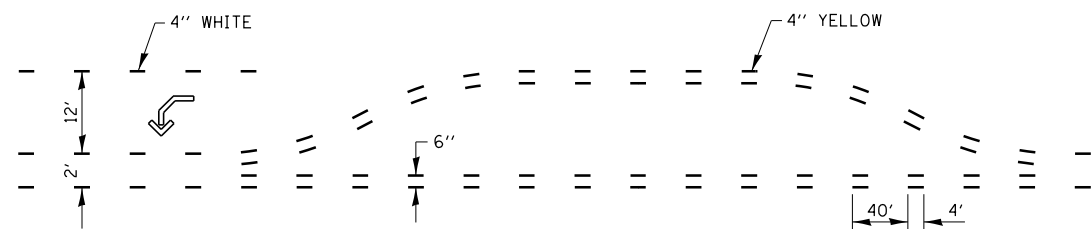
### PAVEMENT PATCHING

FILE NAME =	USER NAME = Schwankerg	DESIGNED -	REVISED -	<b>STATE OF ILLINOIS DEPARTMENT OF TRANSPORTATION</b>	<b>DETAILS</b>			F.A.P. RTE.	SECTION	COUNTY	TOTAL SHEETS	SHEET NO.
c:\pw\work\pwidot\schwankerg\d0256657\066752-sht-details.DGN		DRAWN -	REVISED -					681	(113,114)RS-4	LIVINGSTON	18	17
	PLOT SCALE = 100.0000' / in.	CHECKED -	REVISED -		SCALE:      SHEET NO. OF SHEETS      STA. TO STA.			CONTRACT NO. 66752				
	PLOT DATE = 6/6/2014	DATE -	REVISED -		FED. ROAD DIST. NO.      ILLINOIS FED. AID PROJECT							

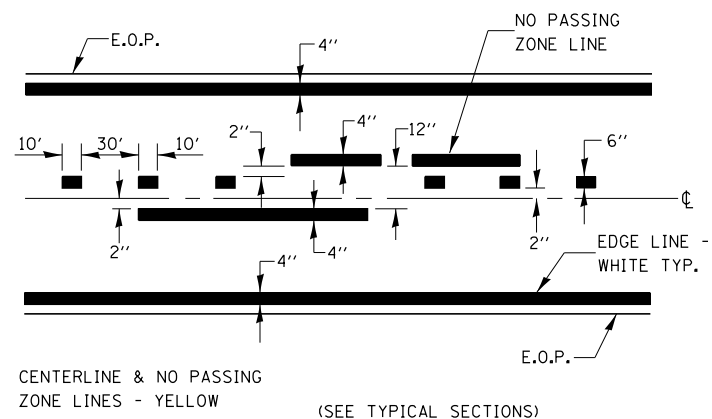


QUANTITY  
12" LINE = 16 LIN. FT.  
OR 4" LINE = 48 LIN. FT.

QUANTITY  
12" LINE = 29 LIN. FT.  
OR 4" LINE = 87 LIN. FT.

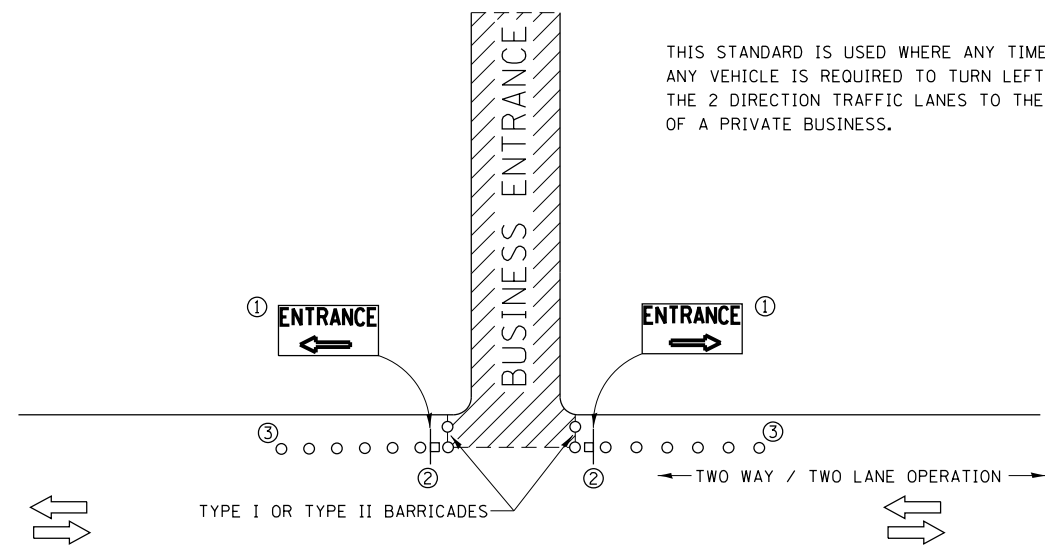


### SHORT-TERM PAVEMENT MARKING FOR MEDIANS AND ARROWS



CENTERLINE & NO PASSING ZONE LINES - YELLOW (SEE TYPICAL SECTIONS)

### PAVEMENT MARKING

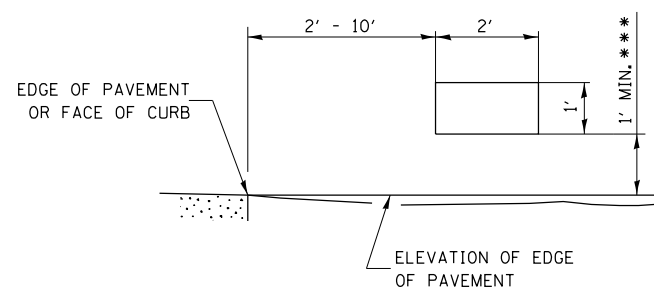


THIS STANDARD IS USED WHERE ANY TIME, DAY OR NIGHT, ANY VEHICLE IS REQUIRED TO TURN LEFT OR RIGHT FROM THE 2 DIRECTION TRAFFIC LANES TO THE ENTRANCE ZONE OF A PRIVATE BUSINESS.

### SYMBOLS

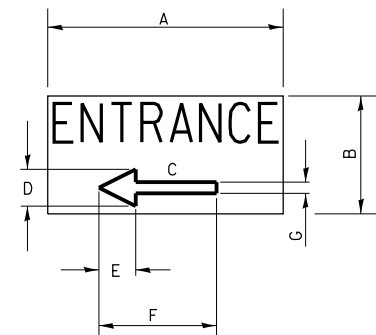
- BUSINESS ENTRANCE ZONE
- BARRICADE OR DRUM WITH FLASHING LIGHT
- SIGN ON TEMPORARY SUPPORT

- ① REFER TO BUSINESS ENTRANCE SIGN TABLE FOR DIMENSIONS.
- ② SEE "SIGNS ON TEMPORARY SUPPORTS" DETAIL.
- ③ DRUMS



### SIGNS ON TEMPORARY SUPPORTS

\*\*\* WHEN WORK OPERATIONS EXCEED FOUR DAYS, THIS DIMENSION SHALL BE 5' MIN. IF LOCATED BEHIND OTHE DEVICES, THE HEIGHT SHALL BE SUFFICIENT TO BE SEEN BY MOTORISTS.



### BUSINESS ENTRANCE SIGN

4" BLUE LETTERING NON-REFLECTIVE WITH WHITE REFLECTIVE BACKGROUND

SIGN SIZE	DIMENSIONS						
	A	B	C	D	E	F	G
24 X 12	24	12	8.25	4.75	3.75	12	2.25

SIGNS FOR BUSINESSES ABUTTING THE WORK ZONE, DELINEATING THE WAY THROUGH THE BARRICADES TO RESPECTIVE ENTRANCES.

### BUSINESS ABUTTING WORK ZONE ENTRANCE SIGN