

F.A.P. RTE.	SECTION	COUNTY	TOTAL SHEETS	SHEET NO.
41	11RS-4 & 12RS-5	KANKAKEE	14	1
ILLINOIS		CONTRACT NO. 66930		

STATE OF ILLINOIS
DEPARTMENT OF TRANSPORTATION
DIVISION OF HIGHWAYS
**PROPOSED
HIGHWAY PLANS**

FAP 41 (IL 17)
SECTION 11RS-4 & 12RS-5

3P MILLING & RESURFACING
KANKAKEE COUNTY

C-93-065-09

3P MILLING AND RESURFACING ON IL 17 FROM JUST WEST
OF S 12000W RD (HERSCHER RD) TO WEST OF THE NORFOLK SOUTHERN RR

SN 046-0032
STA 965+84.5
OMISSION STA 965+36.62
TO STA 966+32.38

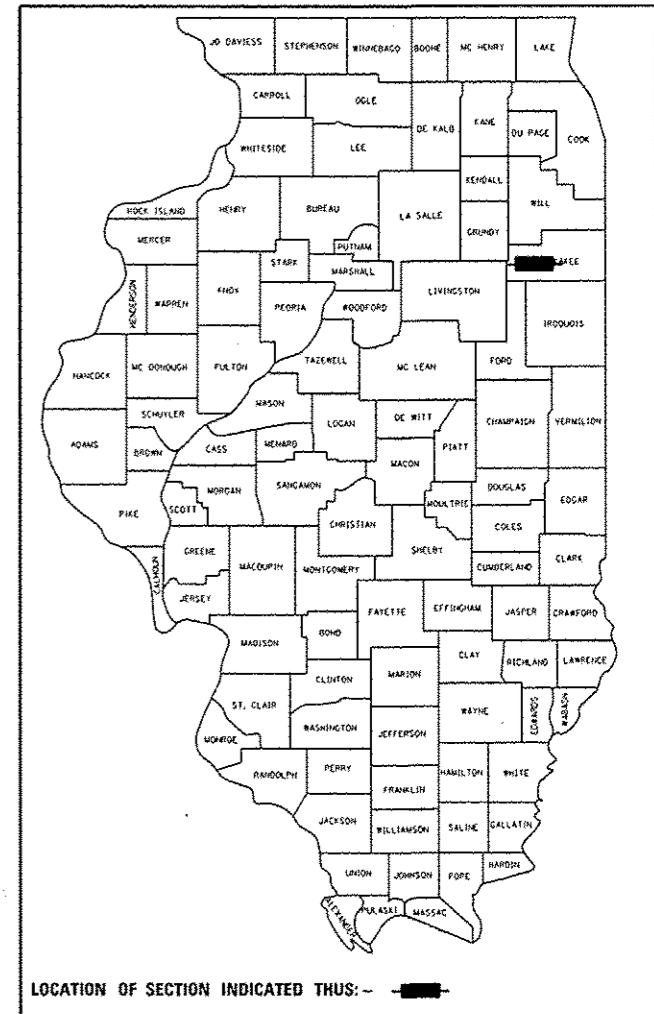
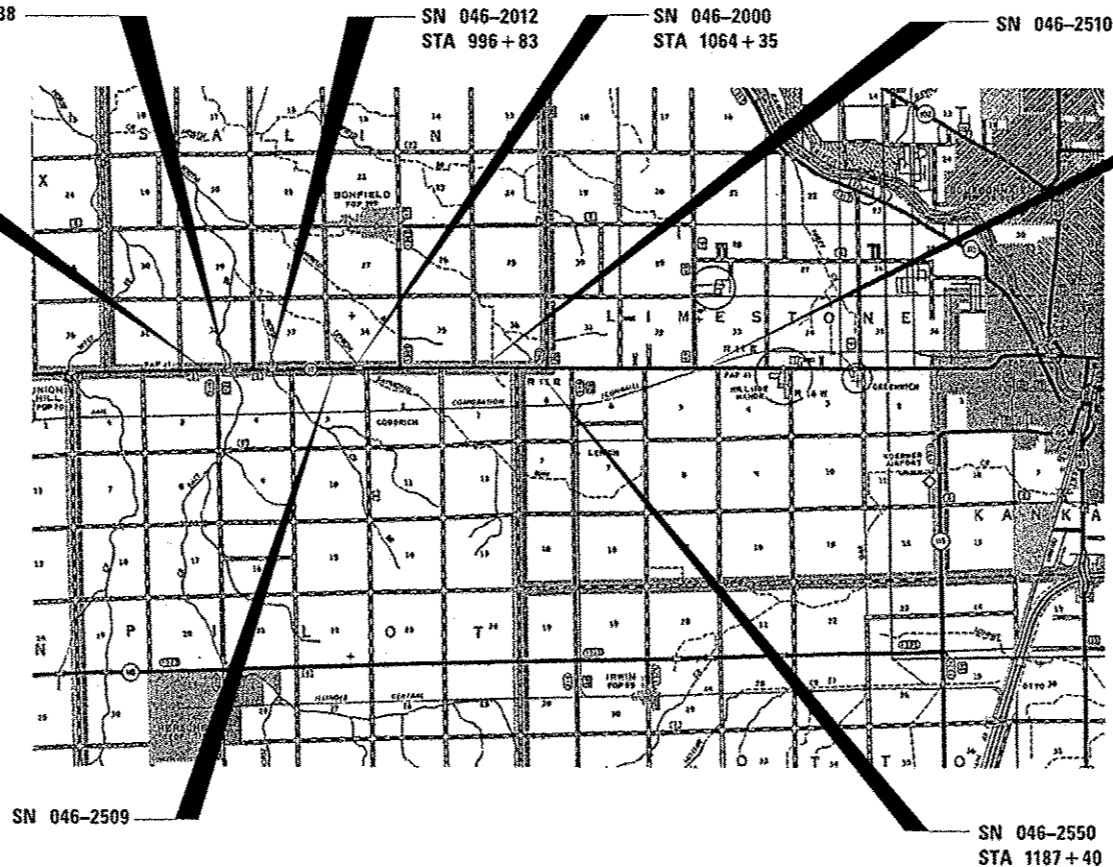
SN 046-2012
STA 996+83

SN 046-2000
STA 1064+35

SN 046-2510

BEGIN IMPROVEMENT
STA 957+38

END IMPROVEMENT
STA 1308+56



LOCATION OF SECTION INDICATED THUS: - [black bar] -

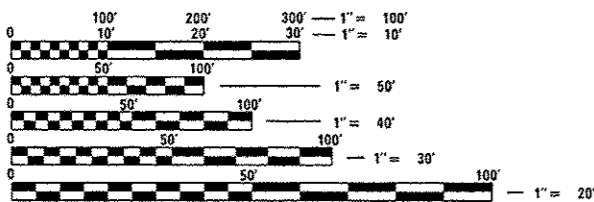
RURAL MINOR ARTERIAL
2013 ADT = 5,150
P.V. = 78.6%
S.U. = 13.6%
M.U. = 7.8%

INDEX OF SHEETS

1	COVER SHEET
2	GENERAL NOTES
3-5	SUMMARY OF QUANTITIES
6-7	TYPICAL SECTIONS
8-9	SCHEDULES
10	PROJECT LAYOUT
11-14	DETAILS

STANDARDS

000001-06	STANDARD SYMBOLS, ABBREVIATIONS AND PATTERNS
001006	DECIMAL OF AN INCH AND OF A FOOT
280001-07	TEMPORARY EROSION CONTROL SYSTEMS
701006-05	OFF-ROAD OPERATIONS 2L, 2W, 15' (4.5 m) TO 24" (600 mm) FROM PAVEMENT EDGE
701011-04	OFF-ROAD MOVING OPERATIONS 2L, 2W, DAY ONLY
701301-04	LANE CLOSURE, 2L, 2W, SHORT TIME OPERATIONS
701306-03	LANE CLOSURE, 2L, 2W, SLOW MOVING OPERATIONS DAY ONLY, FOR SPEEDS ≥ 45 MPH
701311-03	LANE CLOSURE, 2L, 2W, MOVING OPERATIONS - DAY ONLY
701901-03	TRAFFIC CONTROL DEVICES
780001-04	TYPICAL PAVEMENT MARKINGS
781001-03	TYPICAL APPLICATIONS RAISED REFLECTIVE PAVEMENT MARKERS
782001	PRISMATIC CURB REFLECTORS



FULL SIZE PLANS HAVE BEEN PREPARED USING STANDARD ENGINEERING SCALES. REDUCED SIZED PLANS WILL NOT CONFORM TO STANDARD SCALES. IN MAKING MEASUREMENTS ON REDUCED PLANS, THE ABOVE SCALES MAY BE USED.

J.U.L.I.E.
JOINT UTILITY LOCATION INFORMATION FOR EXCAVATION
1-800-892-0123
OR 811

PROJECT ENGINEER: JOE KANNEL, PE
UNIT CHIEF: MICHELE LINDEMANN, PE

CONTRACT NO. 66930

LOCATION MAP

GROSS LENGTH = 35,118 FT = 6.651 MILE
NET LENGTH = 35,022.24 FT = 6.633 MILE

STATE OF ILLINOIS
DEPARTMENT OF TRANSPORTATION
DIVISION OF HIGHWAYS

SUBMITTED *June 6 20 14*
Paul Coetzee
DEPUTY DIRECTOR OF HIGHWAYS, REGION ENGINEER

June 27 20 14
John D. Baranzelli, P.E.
ENGINEER OF DESIGN AND ENVIRONMENT

June 27 20 14
Omer Osman, P.E.
DIRECTOR OF HIGHWAYS, CHIEF ENGINEER

**PRINTED BY THE AUTHORITY
OF THE STATE OF ILLINOIS**