

F.A.P. RTE.	SECTION	COUNTY	TOTAL SHEETS	SHEET NO.
573	(117)RS-6	DEKALB	11	1
		ILLINOIS	CONTRACT NO. 66B18	

STATE OF ILLINOIS
DEPARTMENT OF TRANSPORTATION
DIVISION OF HIGHWAYS
**PROPOSED
HIGHWAY PLANS**

**FAP ROUTE 573 (US 30)
SECTION (117)RS-6**

**3P RESURFACING
DEKALB COUNTY**

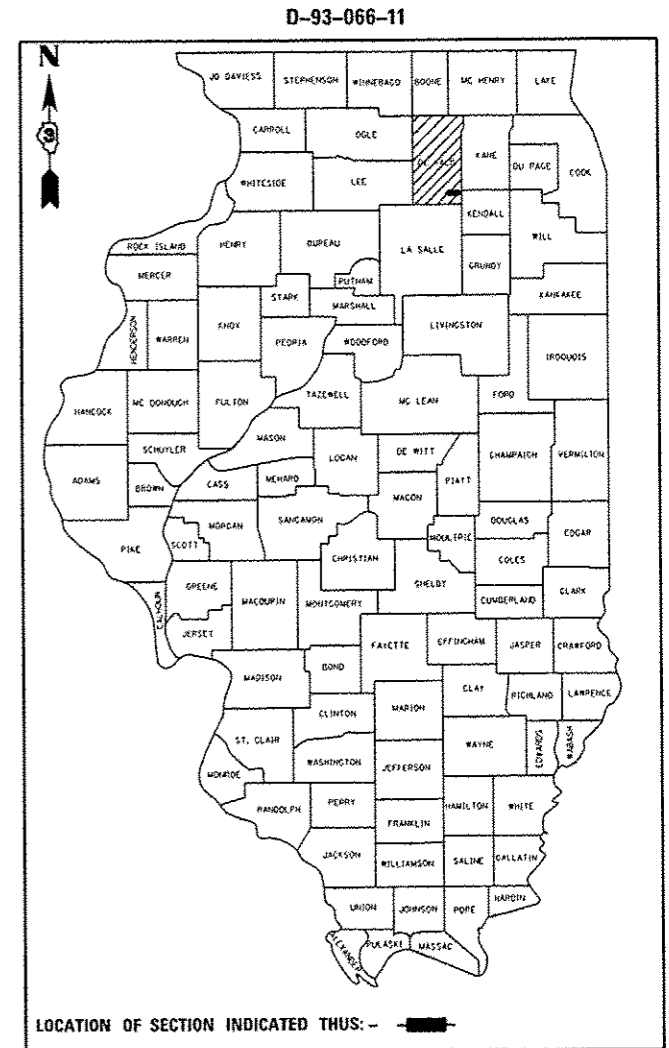
C-93-082-11

INDEX OF SHEETS

- 1 COVER SHEET
- 2 GENERAL NOTES & COMMITMENTS
- 3 - 4 SUMMARY OF QUANTITIES
- 5 TYPICAL SECTION
- 6 SCHEDULES OF QUANTITIES
- 7 - 9 PLAN VIEWS
- 10 - 11 DETAILS

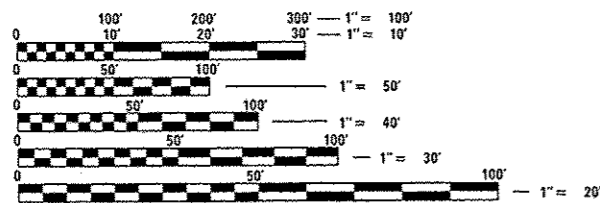
LIST OF ILLINOIS DOT HIGHWAY STANDARDS

- 000001-06 STANDARD SYMBOLS, ABBREVIATIONS AND PATTERNS
- 406201-01 MAILBOX TURNOUT
- 701001-02 OFF-ROAD OPERATIONS 2L, 2W, MORE THAN 15' (4.5 m) AWAY
- 701006-05 OFF-ROAD OPERATIONS 2L, 2W, 15' (4.5 m) TO 24" (600 mm) FROM PAVEMENT EDGE
- 701011-04 OFF-ROAD MOVING OPERATIONS 2L, 2W, DAY ONLY
- 701301-04 LANE CLOSURE, 2L, 2W, SHORT TIME OPERATIONS
- 701306-03 LANE CLOSURE, 2L, 2W, SLOW MOVING OPERATIONS DAY ONLY, FOR SPEEDS ≥ 45 MPH
- 701311-03 LANE CLOSURE, 2L, 2W, MOVING OPERATIONS - DAY ONLY
- 701901-03 TRAFFIC CONTROL DEVICES
- 780001-04 TYPICAL PAVEMENT MARKINGS
- 781001-03 TYPICAL APPLICATIONS RAISED REFLECTIVE PAVEMENT MARKERS



ADT: 6650 (2013) PC: 89.71% SU: 4.78% MU: 5.51%

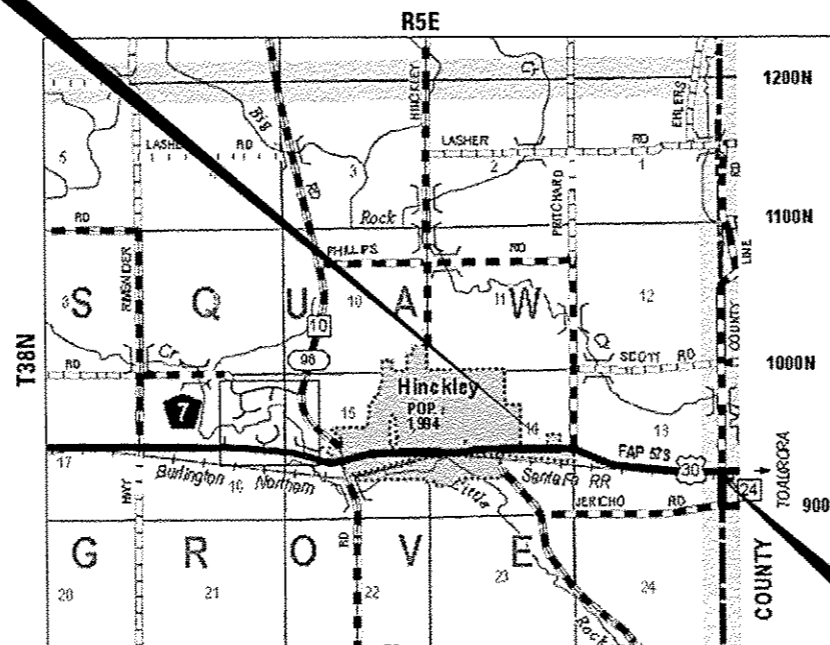
MICROFILMED _____
REEL NUMBER _____
AWARDED _____
RESIDENT ENGINEER _____
AS BUILT CHANGES WERE MADE
ON THE FOLLOWING SHEETS _____



FULL SIZE PLANS HAVE BEEN PREPARED USING STANDARD ENGINEERING SCALES. REDUCED SIZED PLANS WILL NOT CONFORM TO STANDARD SCALES. IN MAKING MEASUREMENTS ON REDUCED PLANS, THE ABOVE SCALES MAY BE USED.

J.U.L.I.E.
JOINT UTILITY LOCATION INFORMATION FOR EXCAVATION
1-800-892-0123
OR 811

**BEGIN IMPROVEMENT
STA 989 + 21**



**END IMPROVEMENT
STA 1055 + 95**

PROJECT ENGINEER: CRAIG REED, P.E.
UNIT CHIEF: BRAD DUNCAN, P.E.
DISTRICT 3 NO. (815) 434-6131
CONTRACT NO. 66B18

GROSS AND NET LENGTH = 6674.00 FT. = 1.264 MILES

STATE OF ILLINOIS
DEPARTMENT OF TRANSPORTATION
DIVISION OF HIGHWAYS

SUBMITTED June 6 20 14
Paul Coete, P.E.
DEPUTY DIRECTOR OF HIGHWAYS, REGION ENGINEER

June 27 20 14
John D. Baranelli, P.E.
ENGINEER OF DESIGN AND ENVIRONMENT

June 27 20 14
Omec Osman, P.E.
DIRECTOR OF HIGHWAYS, CHIEF ENGINEER

**PRINTED BY THE AUTHORITY
OF THE STATE OF ILLINOIS**