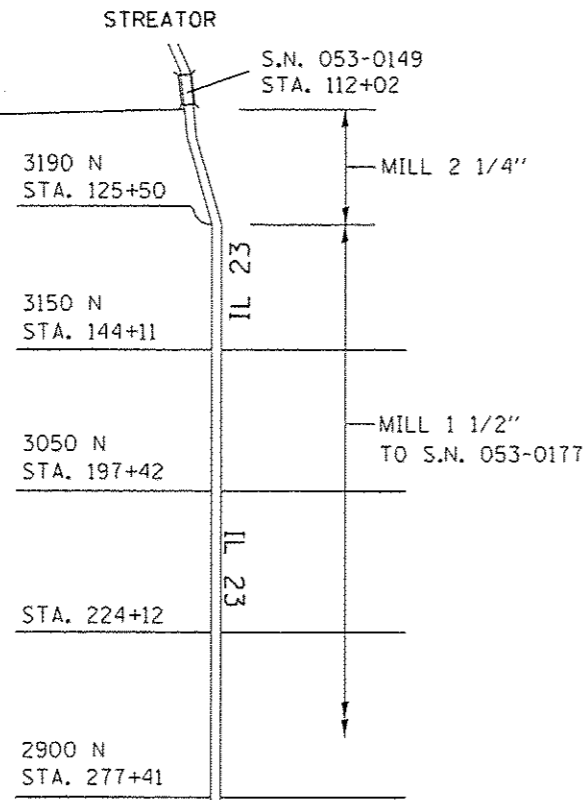




BEGIN PROJECT
STA. 112+02



STA. EQUATION AT P.T.
STA. 296+28.07 (BK)=
STA. 296+64.47 (AH)

S.N. 053-0153
STRUCTURE OMISSION
STA. 279+47
TO STA. 281+62

2800 N
STA. 331+32

S.N. 053-0154
STRUCTURE OMISSION
STA. 407+40
TO STA. 409+40

IL 23

2650 N
STA. 412+35

LONG POINT ROAD

2600 N
STA. 438+90

500 E
STA. 453+70

STA. EQUATION AT P.T.
STA. 475+99.65 (BK)=
STA. 490+60.27 (AH)

600 E
STA. 522+50

S.N. 053-0183
STRUCTURE OMISSION
STA. 526+71
TO STA. 533+32

STA. EQUATION AT P.T.
STA. 592+55.15 (BK)=
STA. 592+56.51 (AH)

750 E
STA. 602+00

S.N. 053-0189
STRUCTURE OMISSION
STA. 618+00
TO STA. 630+00

760 E
STA. 610+50

STA. EQUATION
STA. 748+52.2 (BK)=
STA. 97+40.5 (AH)

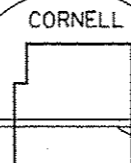
MILL 1 1/2" MILL 2 1/4"

825 E
STA. 656+31

950 E
STA. 722+18

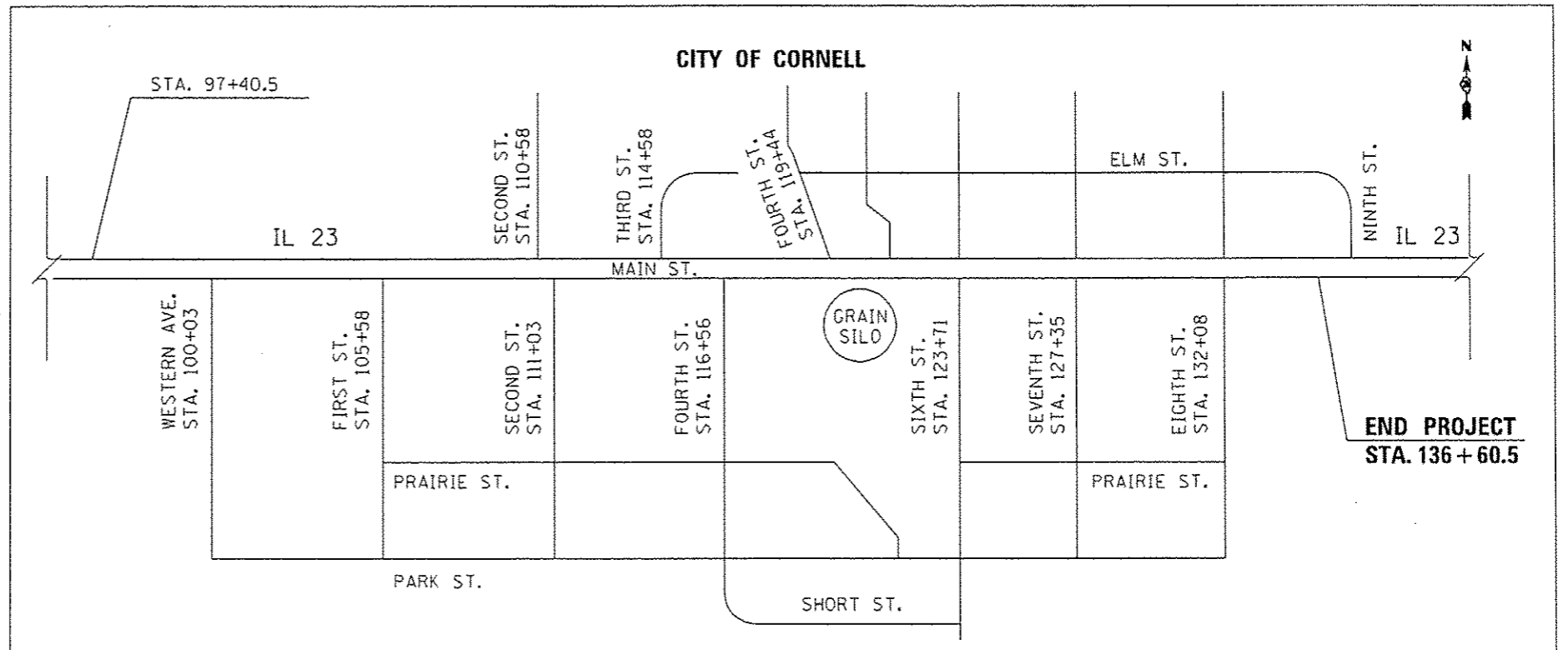
STA. EQUATION AT P.T.
STA. 642+11.58 (BK)=
STA. 646+44.95 (AH)

S.N. 053-0177
STRUCTURE OMISSION
STA. 674+43
TO STA. 678+37



END PROJECT
STA. 136+60.5

INSET MAP



EXISTING CURVE DATA
(FROM OLD PLANS)

P.I. STA= 465+11.74
 $\Delta = 92^{\circ}43'15''$
D= 3^{\circ}00'00"
R= 1909.86'
T= 2002.78'
L= 3090.69'
E= 857.57'
P.C. STA= 445+08.96
P.T. STA= 475+99.65 (BK)=
STA. 490+60.2 (AH)

EXISTING CURVE DATA
(FROM OLD PLANS)

P.I. STA= 603+52.98
 $\Delta = 59^{\circ}43'16''$
D= 3^{\circ}00'00"
R= 1909.86'
T= 1096.47'
L= 1990.70'
E= 292.37'
P.C. STA= 592+55.15 (BK)=
STA. 592+56.51 (AH)
P.T. STA= 612+47.21

EXISTING CURVE DATA
(FROM OLD PLANS)

P.I. STA= 632+30.42
 $\Delta = 60^{\circ}11'06''$
D= 2^{\circ}45'00"
R= 2083.48'
T= 1207.39'
L= 2188.55'
E= 324.56'
P.C. STA= 620+23.03
P.T. STA= 642+11.58 (BK)=
STA. 646+44.95 (AH)

FILE NAME =	USER NAME = lukkarida	DESIGNED -	REVISED -	STATE OF ILLINOIS DEPARTMENT OF TRANSPORTATION	SCHEMATIC	F.A.P. RTE.	SECTION	COUNTY	TOTAL SHEETS	SHEET NO.	
ea:\pwork\p\dot1\lukkarida\2227863\036005-shr-detail.dgn	PLOT SCALE = 1/80.0000 "/>	DRAWN -	REVISED -			68	(10L102)RS-3	LIVINGSTON	22	18	
MODELNAME =	PLOT DATE = 6/25/2014	CHECKED -	REVISED -			CONTRACT NO. 66885					
		DATE -	REVISED -			ILLINOIS FED. AID PROJECT					