

F.A.I. RTE.	SECTION	COUNTY	TOTAL SHEETS	SHEET NO.
57	(38-6B)I-2 & (38-6B-1)I-2	IROQUOIS	27	1
ILLINOIS			CONTRACT NO. 66C81	

INDEX OF SHEETS

1. COVER SHEET
2. GENERAL NOTES
3. SUMMARY OF QUANTITIES
4. TYPICAL SECTIONS
5. SCHEDULES
6. APPROACH TO LANE CLOSURE, FREEWAY/EXPRESSWAY STANDARD 701400 (SPECIAL)
7. LANE CLOSURE, FREEWAY/EXPRESSWAY STANDARD 701402 (SPECIAL)
8. TYPICAL PAVEMENT MARKINGS
9. STAGES OF CONSTRUCTION: SN: 038-0155 & 038-0156
- 10 - 18. STRUCTURE PLANS: SN: 038-0155 & 038-0156
19. STAGES OF CONSTRUCTION: SN: 038-0153 & 038-0154
- 20 - 27. STRUCTURE PLANS: SN: 038-0153 & 038-0154

STANDARDS

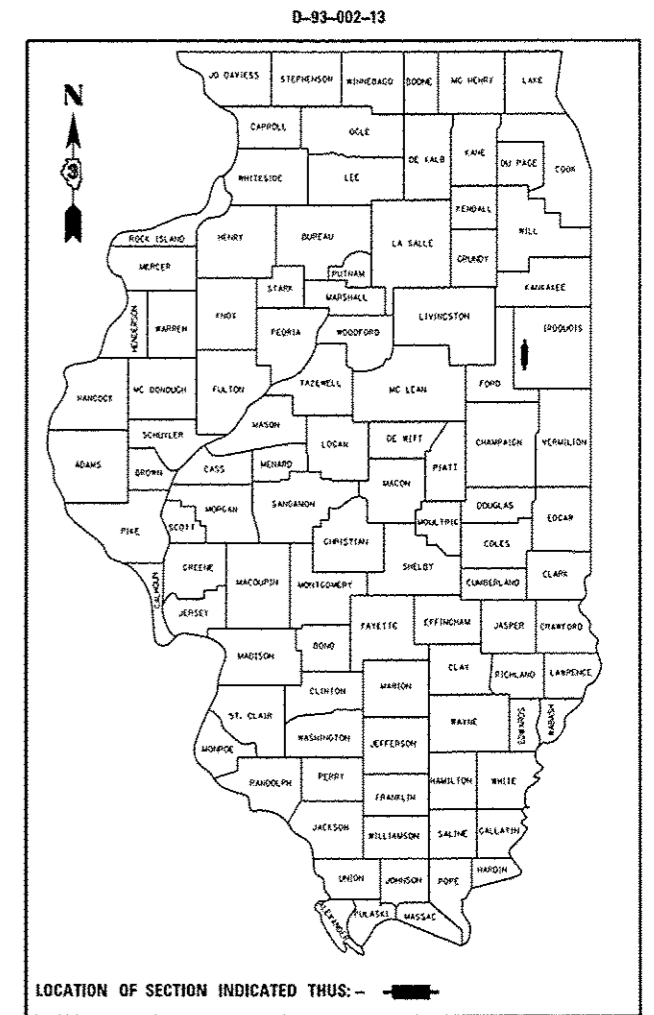
- | | |
|-----------|---|
| 000001-06 | STANDARD SYMBOLS, ABBREVIATIONS AND PATTERNS |
| 001001-02 | AREAS OF REINFORCEMENT BARS |
| 001006 | DECIMAL OF AN INCH AND OF A FOOT |
| 701101-04 | OFF-ROAD OPERATIONS MULTILANE, 15' (4.5 m) TO 24" (600 mm) FROM PAVEMENT EDGE |
| 701106-02 | OFF-ROAD OPERATIONS, MULTILANE, MORE THAN 15' (4.5 m) AWAY |
| 701426-06 | LANE CLOSURE, MULTILANE INTERMITTENT OR MOVING OPERATION, FOR SPEEDS ≥ 45 MPH |
| 701428 | TRAFFIC CONTROL SETUP AND REMOVAL FREEWAY/EXPRESSWAY |
| 701901-03 | TRAFFIC CONTROL DEVICES |
| 704001-07 | TEMPORARY CONCRETE BARRIER |

**STATE OF ILLINOIS
DEPARTMENT OF TRANSPORTATION**

**DIVISION OF HIGHWAYS
PROPOSED
HIGHWAY PLANS**

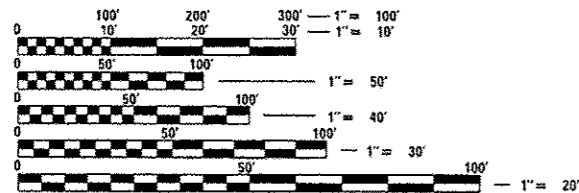
**FAI ROUTE 57 (I-57)
SECTION (38-6B)I-2 & (38-6B-1)I-2**

**BRIDGE REPAIR
S.N. 038-0155 (SB) & S.N. 038-0156 (NB) – NORTH BRANCH
S.N. 038-0153 (SB) & S.N. 038-0154 (NB) – SOUTH BRANCH
OVER SPRING CREEK 2.4 & 3.1 MILES RESPECTIVELY
SOUTH OF ONARGA
IROQUOIS COUNTY**



PROJECT LOCATION
STRUCTURE NO. 038-0155 (SB)
STRUCTURE NO. 038-0156 (NB)
STATION 928 + 50.00

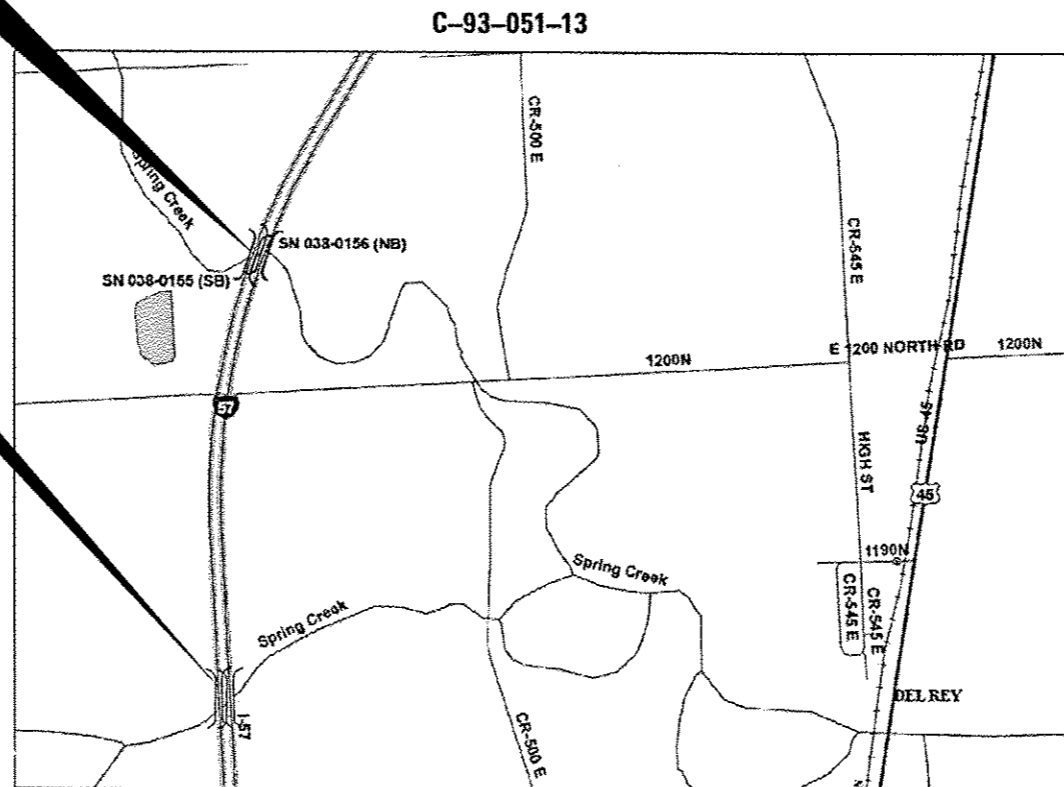
PROJECT LOCATION
STRUCTURE NO. 038-0153 (SB)
STRUCTURE NO. 038-0154 (NB)
STATION 963 + 62.50



FULL SIZE PLANS HAVE BEEN PREPARED USING STANDARD ENGINEERING SCALES. REDUCED SIZED PLANS WILL NOT CONFORM TO STANDARD SCALES. IN MAKING MEASUREMENTS ON REDUCED PLANS, THE ABOVE SCALES MAY BE USED.

J.U.L.I.E.
JOINT UTILITY LOCATION INFORMATION FOR EXCAVATION
1-800-892-0123
OR 811

**PROJECT ENGINEER JOE KANNEL P.E.
UNIT CHIEF RON WOODSHANK
TOWNSHIP ONARGA
CONTRACT NO. 66C81**



LOCATION MAP
POINT LOCATION
NOT TO SCALE

RURAL	
INTERSTATE	
FAI 57 (I-57)	
2012	
ADT	14900
P.V.	63.76%
S.U.	2.68%
M.U.	33.56%

STATE OF ILLINOIS
DEPARTMENT OF TRANSPORTATION
DIVISION OF HIGHWAYS

SUBMITTED *May 15 20 14*
Paul Coetzee
DEPUTY DIRECTOR OF HIGHWAYS, REGION ENGINEER

June 27 20 14
John D. Baranzelli P.E.
ENGINEER OF DESIGN AND ENVIRONMENT

June 27 20 14
Omer Osman P.E.
DIRECTOR OF HIGHWAYS, CHIEF ENGINEER

**PRINTED BY THE AUTHORITY
OF THE STATE OF ILLINOIS**