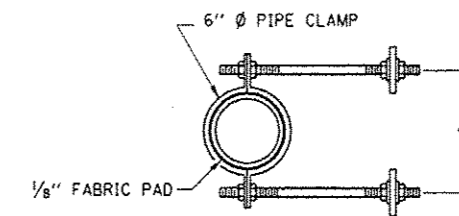


PLAN

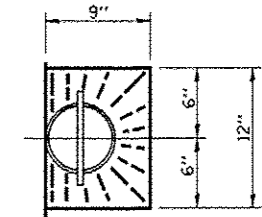
SOUTHBOUND PLAN SHOWN

NORTHBOUND SIMILAR THRU 180 DEG. ROTATION ABOUT CENTERLINE OF FAI 57

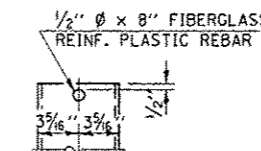


SECTION B-B

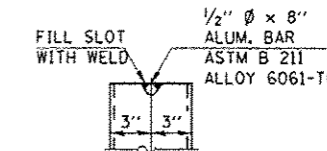
* DIMENSION AS REQUIRED BY PIPE CLAMP



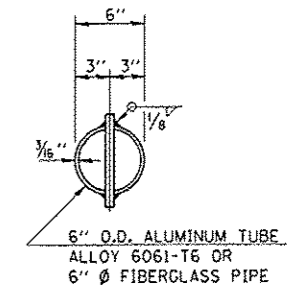
TOP PLAN



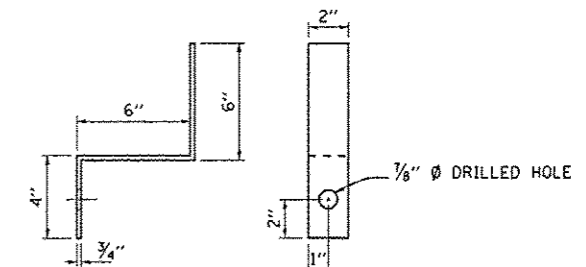
FIBERGLASS PIPE



ALUMINUM TUBE



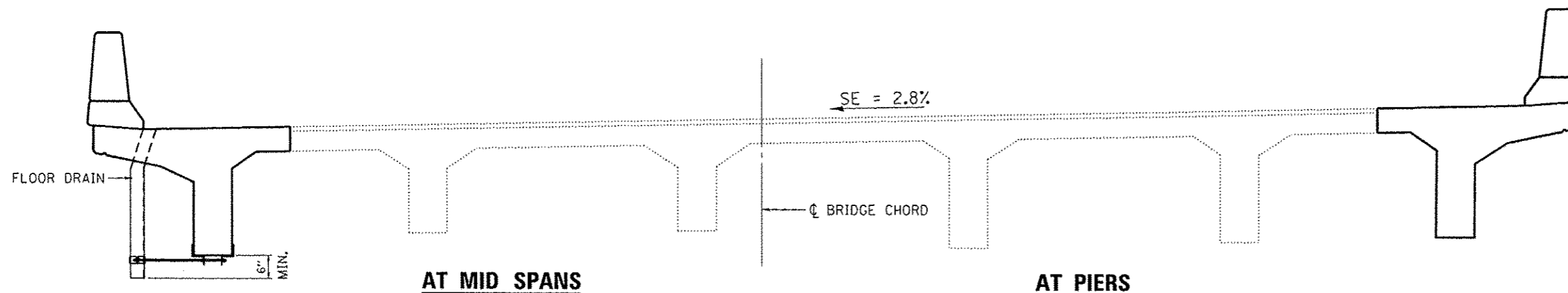
TOP PLAN (SHOWING ALUMINUM TUBE)



CLAMP BRACKET

4 REQ'D PER DRAIN

NOTE:
THE CONTRACTOR SHALL VERIFY IN THE FIELD THE EXISTING DRAIN ANGLE PRIOR TO REMOVAL OF EXISTING DRAINS PRIOR TO THE ORDERING OF NEW CIRCULAR DRAINS.



CROSS SECTION

**TWO SUPERSTRUCTURES
BILL OF MATERIALS**

ITEM	UNIT	QUANTITY
FLOOR DRAIN	EACH	14

FILE NAME :	USER NAME = Patelij	DESIGNED - RW	REVISED -	STATE OF ILLINOIS DEPARTMENT OF TRANSPORTATION	FLOOR DRAIN DETAILS FOR STRUCTURE NO's 038-0155 AND 038-0156	F.A.L. R.T.E.	SECTION	COUNTY	TOTAL SHEETS	SHEET NO.
c:\p\work\p\pidot\patelij\0325865\036601-sh.d\detail.dgn	DRAWN - RW	REVISED -	57			(38-6B)-2 & (38-6B)-11-2	ILLINOIS	27	16	
PLOT SCALE = 100.0000 / 1 in.	CHECKED -	REVISED -	CONTRACT NO. 66C81							
PLOT DATE = 5/6/2014	DATE -	REVISED -	ILLINOIS FED. AID PROJECT							
MODELNAME				SCALE:	SHEET 7 OF 10 SHEETS	STA. 928+50.00				