

INDEX OF SHEETS

1. COVER SHEET
2. GENERAL NOTES
3. SUMMARY OF QUANTITIES
4. TYPICAL SECTIONS
5. SCHEDULES - US 24
6. SCHEDULES - IL 1
7. DETAILS

HIGHWAY STANDARDS

000001-06	STANDARD SYMBOLS, ABBREVIATIONS AND PATTERNS
001006	DECIMAL OF AN INCH AND OF A FOOT
701001-02	OFF-ROAD OPERATIONS 2L, 2W, MORE THAN 15' (4.5 m) AWAY
701006-05	OFF-ROAD OPERATIONS 2L, 2W, 15' (4.5 m) TO 24" (600 mm) FROM PAVEMENT EDGE
701301-04	LANE CLOSURE, 2L, 2W, SHORT TIME OPERATIONS
701306-03	LANE CLOSURE, 2L, 2W, SLOW MOVING OPERATIONS DAY ONLY, FOR SPEEDS \geq 45 MPH
701311-03	LANE CLOSURE, 2L, 2W, MOVING OPERATIONS - DAY ONLY
701901-03	TRAFFIC CONTROL DEVICES

STATE OF ILLINOIS
DEPARTMENT OF TRANSPORTATION
DIVISION OF HIGHWAYS
PROPOSED
HIGHWAY PLANS

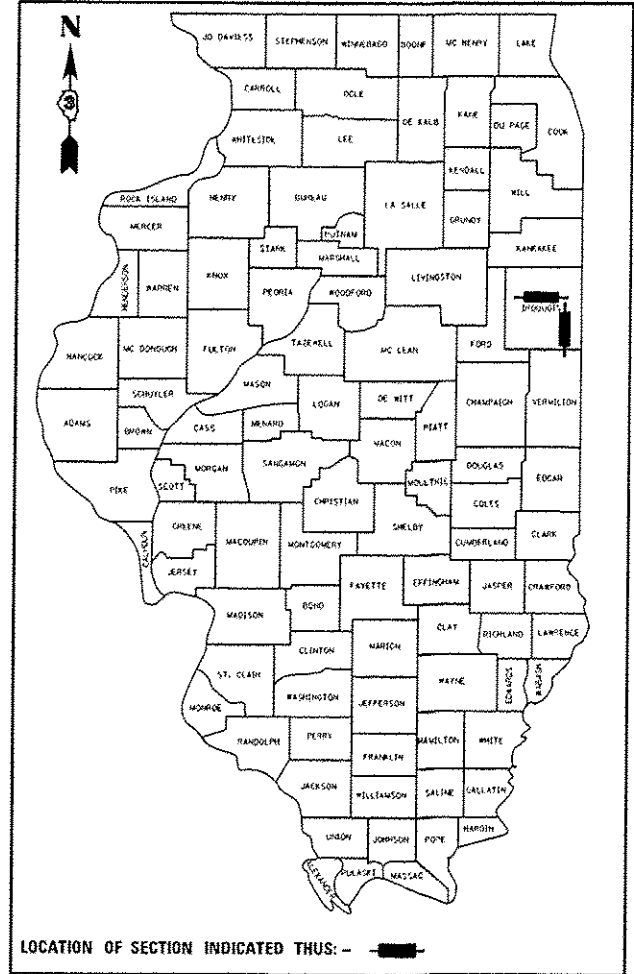
FAP 317 (US 24)
FAP 332 (IL 1)
SECTION D3 ROUTE AND SEAL 2015-1

ROUTING AND SEALING PAVEMENT CRACKS
IROQUOIS COUNTY

C-93-045-14

F.A.P. R.F.	SECTION	COUNTY	TOTAL SHEETS	SHEET NO.
317, 332	D3 CRACK SEALING 2015-1	IROQUOIS	7	1
		(ILLINOIS)	CONTRACT NO. 66D40	

D-93-082-14



FUNCTIONAL CLASSIFICATION
RURAL - OTHER PRINCIPAL ARTERIAL
US ROUTE 24
ADT = 3250 (2012)
P.V = 83.3 % M.U. = 11.5 % S.U. = 5.2 %

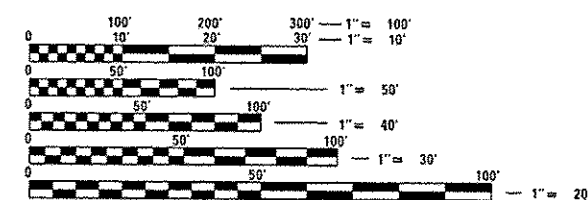
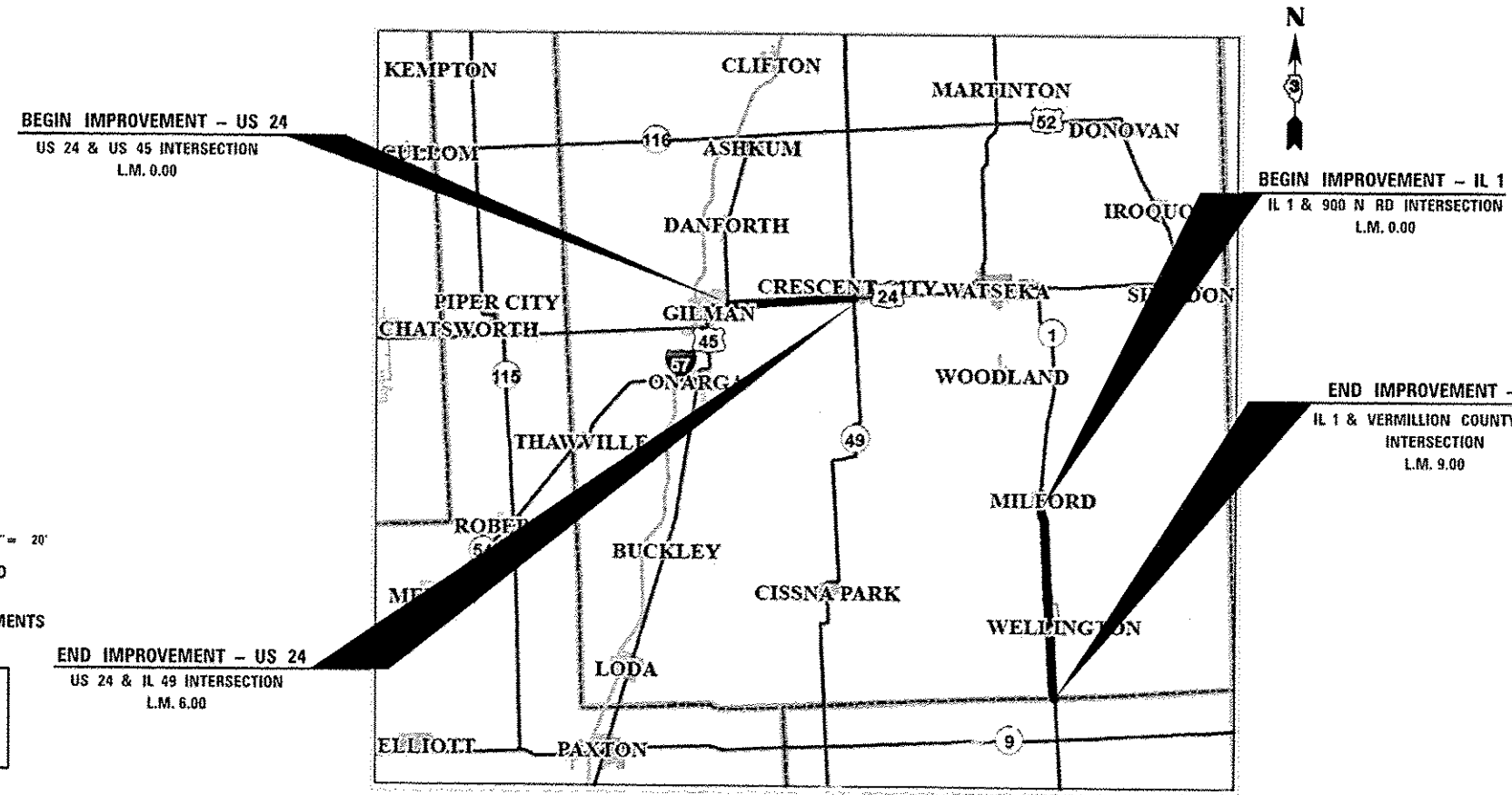
IL ROUTE 1
ADT = 2050 (2012)
P.V = 80.8 % M.U. = 11.0 % S.U. = 8.3 %

STATE OF ILLINOIS
DEPARTMENT OF TRANSPORTATION
DIVISION OF HIGHWAYS

SUBMITTED May 15 2014
Paul Coetzee, P.E.
DEPUTY DIRECTOR OF HIGHWAYS, REGION ENGINEER

June 27 2014
John D. Baranzelli, P.E.
actg. ENGINEER OF DESIGN AND ENVIRONMENT

June 27 2014
Omer Osman, P.E.
DIRECTOR OF HIGHWAYS, CHIEF ENGINEER



FULL SIZE PLANS HAVE BEEN PREPARED USING STANDARD ENGINEERING SCALES. REDUCED SIZED PLANS WILL NOT CONFORM TO STANDARD SCALES. IN MAKING MEASUREMENTS ON REDUCED PLANS, THE ABOVE SCALES MAY BE USED.

J.U.I.E.
JOINT UTILITY LOCATION INFORMATION FOR EXCAVATION
1-800-892-0123
OR 811

PROJECT ENGINEER: JOE KANNEL P.E.
UNIT CHIEF: RON WOODSHANK
TOWNSHIPS: DOUGLAS, CRESCENT, MILFORD, LOVEJOY
CONTRACT NO. 66D40

GROSS LENGTH US 24 = 31680 FT. = 6.0 MILE
NET LENGTH US 24 = 31788 FT. = 6.02 MILE
GROSS LENGTH IL 1 = 47520 FT. = 9.0 MILE
NET LENGTH IL 1 = 47204 FT. = 8.94 MILE

PRINTED BY THE AUTHORITY
OF THE STATE OF ILLINOIS