

PROPOSED HIGHWAY PLANS

FAP 317 (US 24)

FAP 332 (IL 1)

SECTION D3 ROUTE AND SEAL 2015-1

ROUTING AND SEALING PAVEMENT CRACKS IROQUOIS COUNTY

C-93-045-14

F.A.P. RITE	SECTION	COUNTY	TOTAL SHEETS	SHEET NO.
317, 332	D3 CRACK SEALING 2015-1	IROQUOIS	7	1
		(ILLINOIS)	CONTRACT NO. 66D40	

1. COVER SHEET
2. GENERAL NOTES
3. SUMMARY OF QUANTITIES
4. TYPICAL SECTIONS
5. SCHEDULES - US 24
6. SCHEDULES - IL 1
7. DETAILS

HIGHWAY STANDARDS

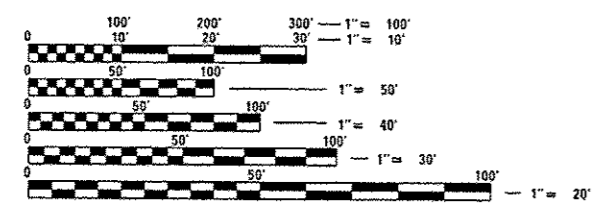
- 000001-06 STANDARD SYMBOLS, ABBREVIATIONS AND PATTERNS
- 001006 DECIMAL OF AN INCH AND OF A FOOT
- 701001-02 OFF-ROAD OPERATIONS 2L, 2W, MORE THAN 15' (4.5 m) AWAY
- 701006-05 OFF-ROAD OPERATIONS 2L, 2W, 15' (4.5 m) TO 24" (600 mm) FROM PAVEMENT EDGE
- 701301-04 LANE CLOSURE, 2L, 2W, SHORT TIME OPERATIONS
- 701306-03 LANE CLOSURE, 2L, 2W, SLOW MOVING OPERATIONS DAY ONLY, FOR SPEEDS \geq 45 MPH
- 701311-03 LANE CLOSURE, 2L, 2W, MOVING OPERATIONS - DAY ONLY
- 701901-03 TRAFFIC CONTROL DEVICES



LOCATION OF SECTION INDICATED THUS:

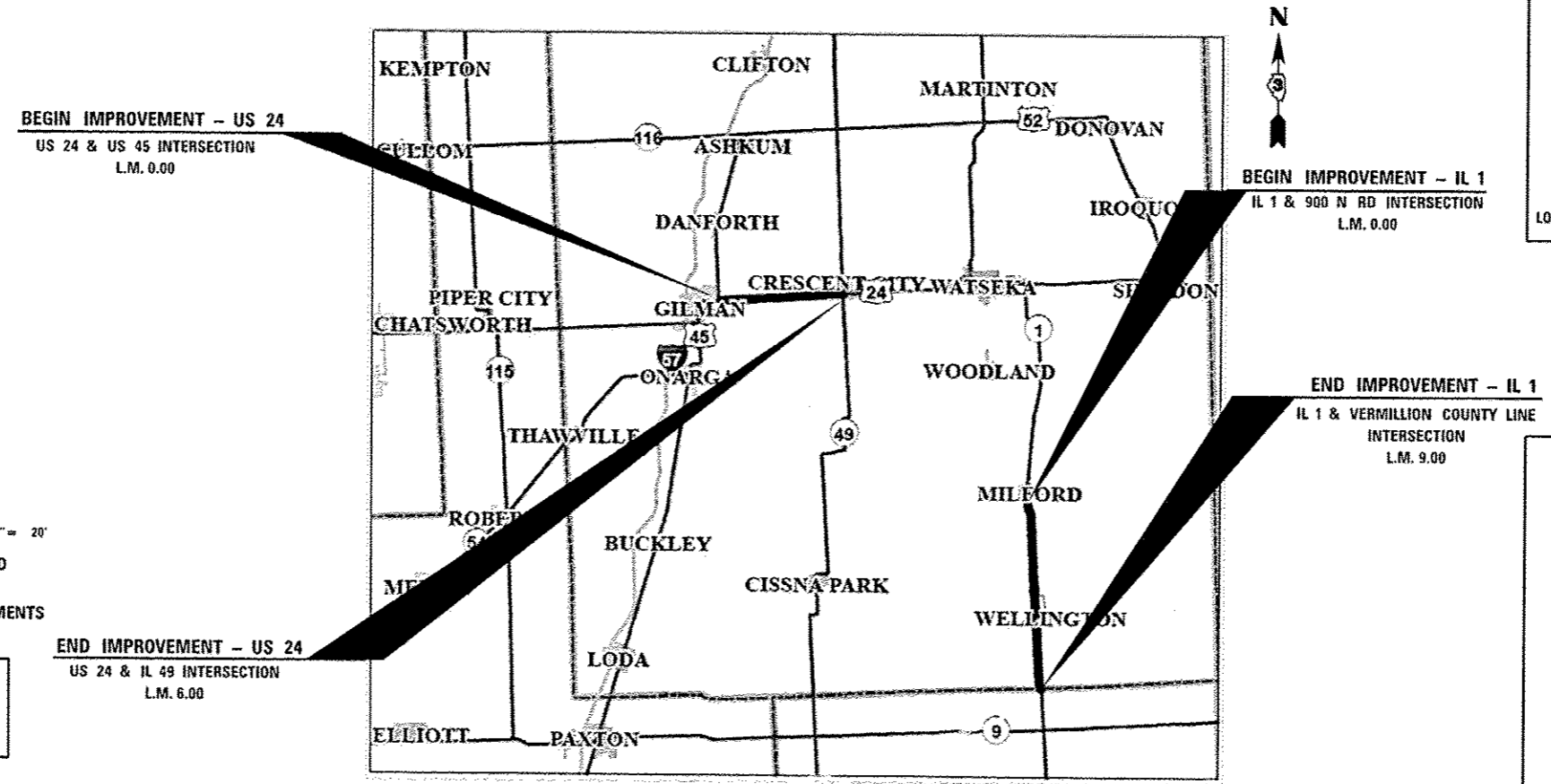
FUNCTIONAL CLASSIFICATION
 RURAL - OTHER PRINCIPAL ARTERIAL
 US ROUTE 24
 ADT = 3250 (2012)
 P.V = 83.3 % M.U. = 11.5 % S.U. = 5.2 %

IL ROUTE 1
 ADT = 2050 (2012)
 P.V = 80.8 % M.U. = 11.0 % S.U. = 8.3 %



FULL SIZE PLANS HAVE BEEN PREPARED USING STANDARD ENGINEERING SCALES. REDUCED SIZED PLANS WILL NOT CONFORM TO STANDARD SCALES. IN MAKING MEASUREMENTS ON REDUCED PLANS, THE ABOVE SCALES MAY BE USED.

J.U.L.I.E.
 JOINT UTILITY LOCATION INFORMATION FOR EXCAVATION
 1-800-892-0123
 OR 811



END IMPROVEMENT - US 24
 US 24 & IL 49 INTERSECTION
 L.M. 6.00

GROSS LENGTH US 24 = 31680 FT. = 6.0 MILE
 NET LENGTH US 24 = 31788 FT. = 6.02 MILE
 GROSS LENGTH IL 1 = 47520 FT. = 9.0 MILE
 NET LENGTH IL 1 = 47204 FT. = 8.94 MILE

PROJECT ENGINEER: JOE KANNEL P.E.
 UNIT CHIEF: RON WOODSHANK
 TOWNSHIPS: DOUGLAS, CRESCENT, MILFORD, LOVEJOY
 CONTRACT NO. 66D40

STATE OF ILLINOIS
 DEPARTMENT OF TRANSPORTATION
 DIVISION OF HIGHWAYS

SUBMITTED May 15 2014
Paul Coetzee, P.E.
 DEPUTY DIRECTOR OF HIGHWAYS, REGION ENGINEER

June 27 2014
John D. Baranzelli, P.E.
 acting ENGINEER OF DESIGN AND ENVIRONMENT

June 27 2014
Omer Osman, P.E.
 DIRECTOR OF HIGHWAYS, CHIEF ENGINEER

PRINTED BY THE AUTHORITY OF THE STATE OF ILLINOIS

GENERAL NOTES

PLAN DIMENSIONS AND DETAILS RELATIVE TO THE EXISTING PLANS ARE SUBJECT TO ROUTINE VARIATIONS. THE CONTRACTOR SHALL FIELD VERIFY EXISTING DIMENSIONS AND DETAILS AFFECTING NEW CONSTRUCTION AND MAKE NECESSARY APPROVED ADJUSTMENTS PRIOR TO CONSTRUCTION OR ORDERING OF MATERIALS. SUCH VARIATIONS SHALL NOT BE CAUSE FOR ADDITIONAL COMPENSATION FOR A CHANGE IN THE SCOPE OF THE WORK. HOWEVER, THE CONTRACTOR WILL BE PAID FOR THE QUANTITY FURNISHED BASED UPON THE UNIT BID PRICE FOR THE WORK.

THE CONTRACTOR SHALL BE RESPONSIBLE FOR PROTECTING UTILITY PROPERTY FROM CONSTRUCTION OPERATIONS AS OUTLINED IN ARTICLE 107.31 OF THE STANDARD SPECIFICATIONS. THE "JULIE" NUMBER IS 1-800-892-0123. A MINIMUM OF FORTY-EIGHT (48) HOURS ADVANCE NOTICE IS REQUIRED.

SHORT-TERM PAVEMENT MARKING SHALL BE USED TO OUTLINE THE CENTERLINE OF PAVEMENT AND NO-PASSING LINES

ANY REFERENCE TO A STANDARD IN THESE PLANS SHALL BE INTERPRETED TO MEAN THE EDITION AS INDICATED BY THE SUBNUMBER SHOWN IN THE LIST OF STANDARDS OR THE COPY INCLUDED IN THESE PLANS.

THE FOLLOWING RATES OF APPLICATION HAVE BEEN USED IN CALCULATING PLAN QUANTITIES FOR ROUTED CRACKS:

CRACK FILLING MATERIAL	0.35	POUNDS/FOOT
------------------------	------	-------------

DATE: 5-15-14

PREPARED BY: Don Boni
DISTRICT STUDIES & PLANS ENGINEER

EXAMINED BY: Heidi Jones
DISTRICT CONSTRUCTION ENGINEER

Ray J. Miller
DISTRICT MATERIALS ENGINEER

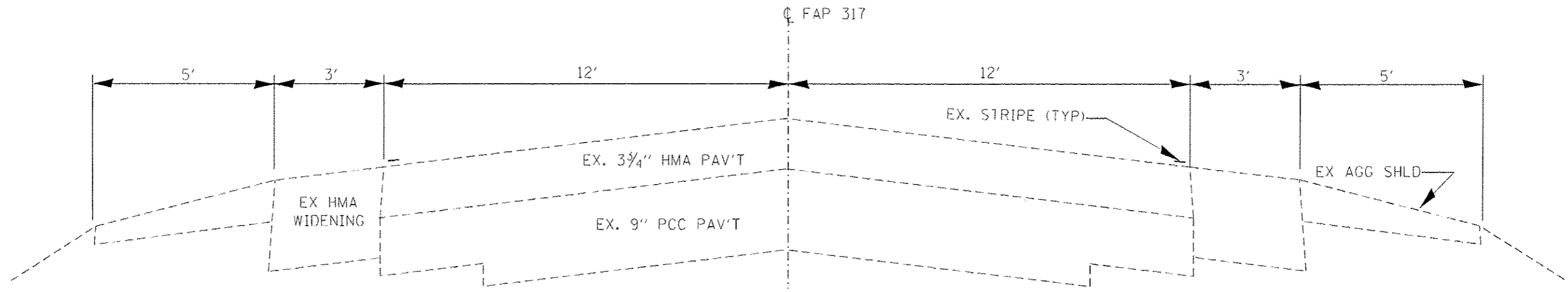
James A. Guehrer
DISTRICT OPERATIONS ENGINEER

FILE NAME * c:\pwork\pavedata\ahmedh\0368789\036910-district.dgn	USER NAME * ahmedh	DESIGNED - HASAN AHMED	REVISED -	STATE OF ILLINOIS DEPARTMENT OF TRANSPORTATION	GENERAL NOTES	F.A.P. RTE. 317, 332	SECTION D3 CRACK SEALING 2015-1	COUNTY JROQUOIS	TOTAL SHEETS 7	SHEET NO. 2		
PLOT SCALE * 1/80.0000 / 1/16"	CHECKED -	REVISED -	SCALE:			SHEET NO. 1 OF 1 SHEETS	STA.	TO STA.	ILLINOIS FED. AID PROJECT CONTRACT NO. 66D40			
PLOT DATE * 5/5/2014	DATE -	REVISED -										

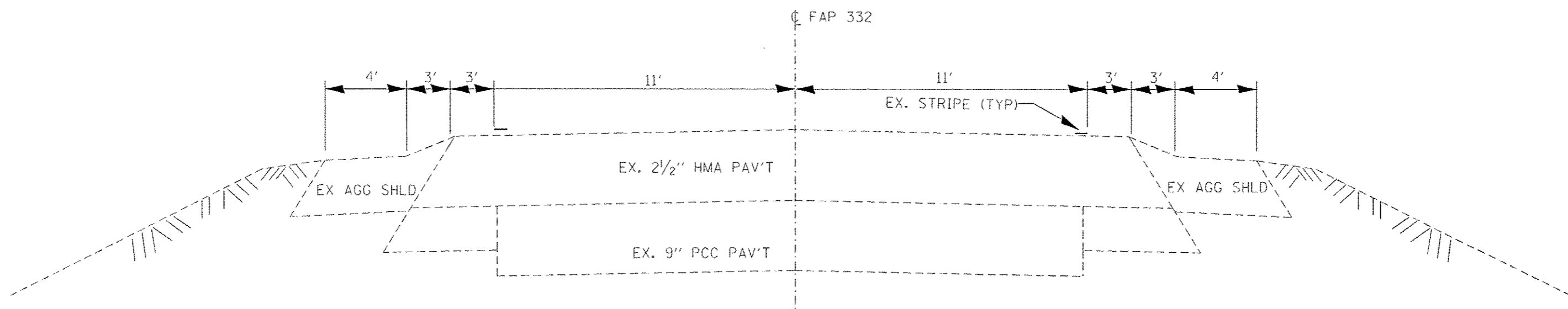
CODE NO.	ITEM	UNIT	TOTAL QUANTITY	CONSTR. CODE	
				FAP 317 (US 24)	FAP 332 (IL 1)
				STATE FUNDS	
				100%	
				ROADWAY	
				0005	
				RURAL	
				FAP 317 (US 24)	FAP 332 (IL 1)
45100100	CRACK ROUTING (PAVEMENT)	FOOT	91952	36972	54980
45100200	CRACK FILLING	POUND	32184	12941	19243
67100100	MOBILIZATION	L SUM	1	0.5	0.5
70100460	TRAFFIC CONTROL AND PROTECTION, STANDARD 701306	L SUM	1	0.5	0.5
* 78001130	PAINT PAVEMENT MARKING - LINE 6"	FOOT	19694	7814	11880

* SPECIALTY ITEM

FILE NAME *	USER NAME *	DESIGNED -	REVISED -	STATE OF ILLINOIS DEPARTMENT OF TRANSPORTATION	SUMMARY OF QUANTITIES	F.A.P.	SECTION	COUNTY	TOTAL SHEETS	SHEET NO.
cr:\pe_work\pudat\ahmedh\49360789\0366	ahmedh	DRAWN -	REVISED -			317, 332	03 CRACK SEALING 2015-1	IRROUOIS	7	3
		CHECKED -	REVISED -			SCALE:	SHEET NO. 1 OF 1 SHEETS	STA.	TO STA.	ILLINOIS FED. AID PROJECT
		DATE -	REVISED -			CONTRACT NO. 66040				



TYPICAL SECTION
 FAP 317 (US 24)
 L.M. 0.0 TO L.M. 6.0



TYPICAL SECTION
 FAP 332 (IL 1)
 L.M. 0.0 TO L.M. 9.0

FILE NAME *	USER NAME *	DESIGNED -	REVISOR -	STATE OF ILLINOIS DEPARTMENT OF TRANSPORTATION	TYPICAL SECTIONS	F.A.P. #	SECTION	COUNTY	TOTAL SHEETS	SHEET NO.
C:\pwork\pwork\ahmedh\036878\036878.dgn	ahmedh	DRAWN - HASAN AHMED	REVISOR -			317, 332	D3 CRACK SEALING 2015-1	IRROUOIS	7	4
PLOT SCALE * 1/80.0000' = 1"		CHECKED -	REVISOR -			CONTRACT NO. 66D40		ILLINOIS FED. AID PROJECT		
PLOT DATE * 5/5/2014		DATE -	REVISOR -			SCALE:	SHEET NO. 1 OF 1 SHEETS	STA.	TO STA.	

CRACK ROUTING AND SEALING SCHEDULE - FAP 317 (US 24)

LOCATION	CENTERLINE CRACK ROUTING (PAVEMENT)	* TRANSVERSE CRACK ROUTING (PAVEMENT)	CENTERLINE CRACK FILLING	* TRANSVERSE CRACK FILING	REMARKS
L.M. - L.M.	FOOT	FOOT	POUND	POUND	
L.M. 0.00					US RTE. 45 INTERSECTION
0.00 - 1.00	6180	864	2163	302	INCLUDES LEFT TURN LANE QUANTITY
L.M. 1.0					N 900 E RD
1.00 - 2.10	5808	950	2033	333	
2.10 - 2.13					BRIDGE OMISSION S.N. 038-0032
2.13 - 3.03	4752	778	1663	272	
3.03 - 3.10					BRIDGE OMISSION S.N. 038-0033
3.10 - 4.00	4752	778	1663	272	
4.00 - 4.05					BRIDGE OMISSION S.N. 038-0034
4.05 - 5.00	5016	821	1756	287	
L.M. 5.00					N 1300 E RD
5.00 - 6.00	5280	864	1848	302	
L.M. 6.00					IL RTE. 49 INTERSECTION
SUBTOTAL	31788	5054	11126	1768	
TOTAL		36842		12894	

PAVEMENT MARKING SCHEDULE - FAP 317 (US 24)

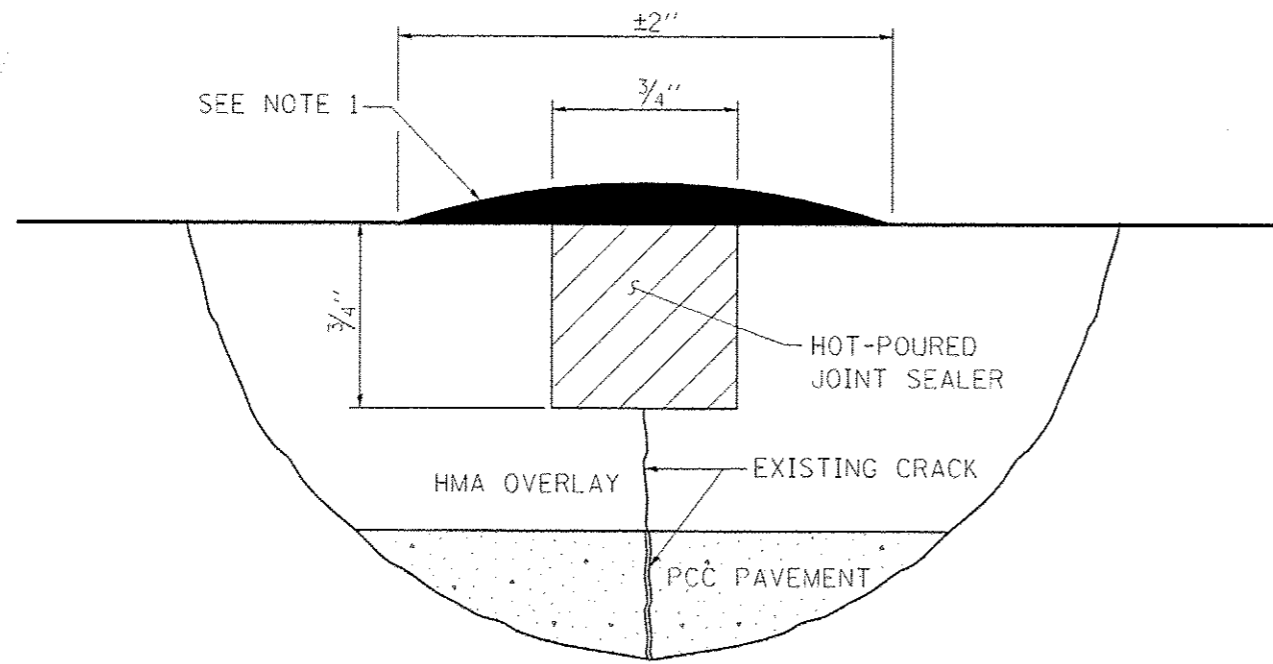
LOCATION	PAINT PAVEMENT MARKING LINE 6" YELLOW	REMARKS
L.M. - L.M.	FOOT	
L.M. 0.00		US RTE. 45 INTERSECTION
0.08 - 6.00	7814	
L.M. 6.00		IL RTE. 49 INTERSECTION
TOTAL	7814	

* ESTIMATING 36 FULL WIDTH (24')
TRANSVERSE CRACKS PER MILE.
FINAL QUANTITIES WILL BE DETERMINED
BY THE RE/RT UPON CONSTRUCTION.

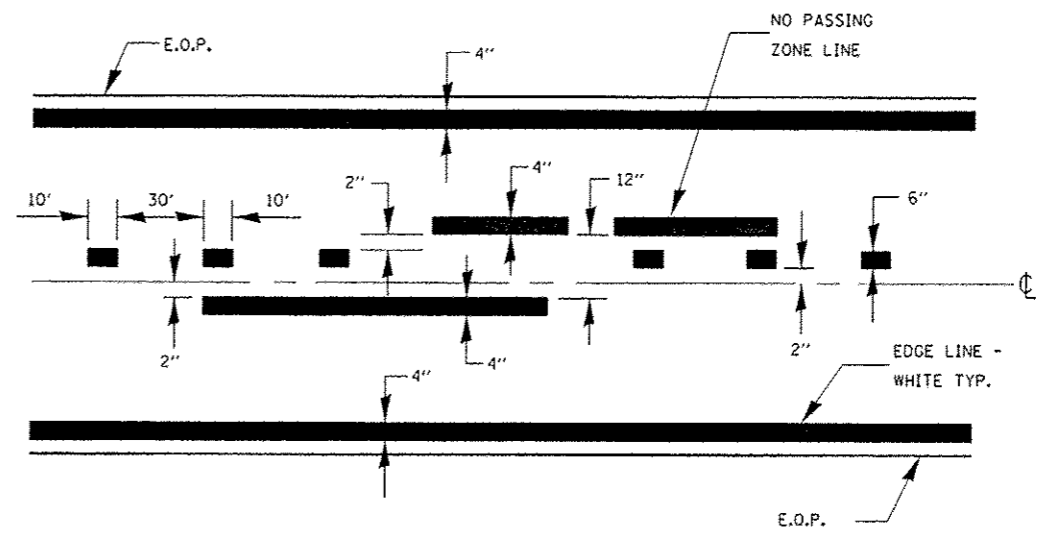
CRACK ROUTING AND SEALING SCHEDULE -FAP 332 (IL 1)						
LOCATION	CENTERLINE CRACK ROUTING (PAVEMENT)	* TRANSVERSE CRACK ROUTING (PAVEMENT)	CENTERLINE CRACK FILLING	*TRANSVERSE CRACK FILING	REMARKS	
L.M. - L.M.	FOOT	FOOT	POUND	POUND		
L.M. 0.00					E 900 N RD (SOUTH SIDE OF MILFORD)	
0.00 - 0.80	4224	691	1478	242		
0.80 - 0.84					BRIDGE OMISSION S.N. 038-0200	
0.84 - 2.00	6125	1002	2144	351		
L.M. 2.00					E 700 N RD	
2.00 - 3.30	6864	1123	2402	393		
3.30 - 3.32					BRIDGE OMISSION S.N. 038-0201	
3.32 - 4.00	3591	588	1257	206		
L.M. 4.00					E 500 N RD	
4.00 - 5.00	5280	864	1848	302		
L.M. 5.00					E 400 N RD	
5.00 - 5.70	3696	605	1294	212		
L.M. 5.70					BRIDGE OMISSION S.N. 038-0028	
5.70 - 6.00	1584	259	554	91		
L.M. 6.00					E 300 N RD	
6.00 - 7.00	5280	864	1848	302		
L.M. 7.00					E 200 N RD	
7.00 - 8.00	5280	864	1848	302		
L.M. 8.00					E 100 N RD	
8.00 - 9.00	5280	864	1848	302		
L.M. 9.00					VERMILLION COUNTY LINE	
TOTAL	47204	7724	16521	2703		

PAVEMENT MARKING SCHEDULE - FAP 332 (IL 1)		
LOCATION	PAINT PAVEMENT MARKING LINE 6" YELLOW	REMARKS
L.M. - L.M.	FOOT	
L.M. 0.00		E 900 N RD
0.08 - 9.00	11880	
L.M. 9.00		VERMILLION COUNTY LINE
TOTAL	11880	

* ESTIMATING 36 FULL WIDTH (24')
TRANSVERSE CRACKS PER MILE.
FINAL QUANTITIES WILL BE DETERMINED
BY THE RE/RT UPON CONSTRUCTION.



CRACK ROUTING AND SEALING DETAIL



CENTERLINE & NO PASSING ZONE LINES - YELLOW

PAVEMENT MARKING

NOTE 1:
 THE CRACK OR JOINT SHALL BE SLIGHTLY OVERFILLED AND IMMEDIATELY SQUEEGEED TO PROVIDE A "BAND-AID" TYPE EFFECT APPROXIMATELY TWICE THE WIDTH OF THE ROUTED CRACK OR OPEN CRACK/JOINT FLUSH WITH THE PAVEMENT SURFACE AND WITH THE EDGES FEATHERED OUT.

FILE NAME *	USER NAME * ahmedh	DESIGNED - HASAN AHMED	REVISED -	STATE OF ILLINOIS DEPARTMENT OF TRANSPORTATION	DETAILS	F.A.P. RTE.	SECTION	COUNTY	TOTAL SHEETS	SHEET NO.	
c:\pwork\pwork\ahmedh\d0368789\03660	10-dt-detailed.dgn	DRAWN - HASAN AHMED	REVISED -			317, 332	D3 CRACK SEALING 2015-1	IROQUOIS	7	7	
	PLOT SCALE * 1/8"=1'-0"	CHECKED -	REVISED -			CONTRACT NO. 66040					
	PLOT DATE * 5/5/2014	DATE -	REVISED -			ILLINOIS FED. AID PROJECT					