

CONSTRUCTION NOTES:

MODIFY EXISTING CONTROLLER AND CABINET.

EXISTING DETECTOR LOOP LEAD-IN CABLE TO REMAIN IN PLACE.

REMOVE EXISTING 3-SECTION LED HEAD ON THE SOUTHEAST MAST ARM AND REPLACE WITH 5-SECTION LED HEAD. RE USE EXISTING WIRING.

REMOVE EXISTING 3-SECTION LED HEAD ON THE NORTHWEST MAST ARM AND REPLACE WITH 5-SECTION LED HEAD. RE USE EXISTING WIRING.

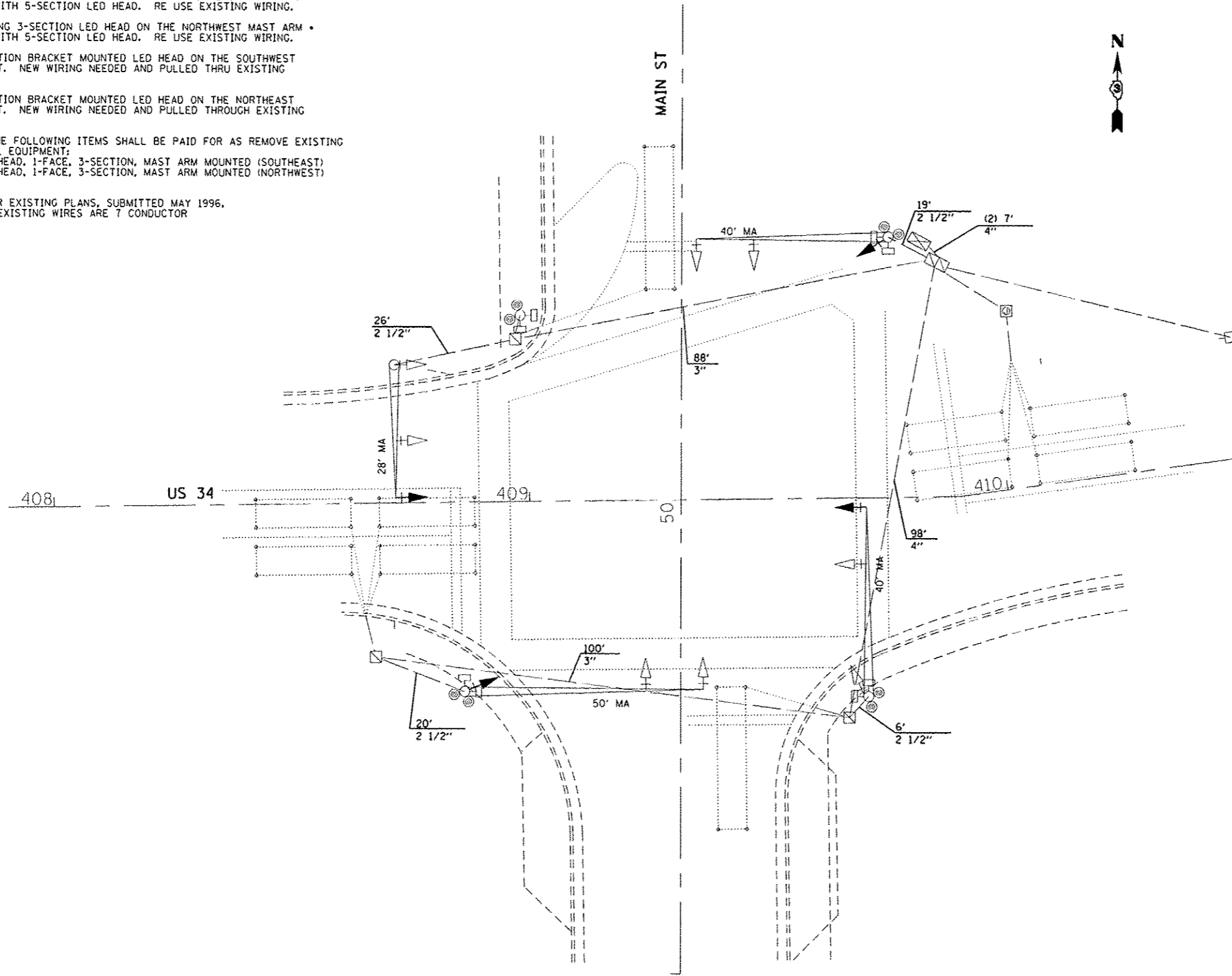
INSTALL 5-SECTION BRACKET MOUNTED LED HEAD ON THE SOUTHWEST MAST ARM POST. NEW WIRING NEEDED AND PULLED THRU EXISTING CONDUIT.

INSTALL 5-SECTION BRACKET MOUNTED LED HEAD ON THE NORTHEAST MAST ARM POST. NEW WIRING NEEDED AND PULLED THROUGH EXISTING CONDUIT.

REMOVAL OF THE FOLLOWING ITEMS SHALL BE PAID FOR AS REMOVE EXISTING TRAFFIC SIGNAL EQUIPMENT:

- SIGNAL HEAD, 1-FACE, 3-SECTION, MAST ARM MOUNTED (SOUTHEAST)
- SIGNAL HEAD, 1-FACE, 3-SECTION, MAST ARM MOUNTED (NORTHWEST)

• PER EXISTING PLANS, SUBMITTED MAY 1996, THE EXISTING WIRES ARE 7 CONDUCTOR



NOTE: REMOVED TRAFFIC SIGNAL HEADS SHALL BE DELIVERED TO THE ILLINOIS DEPARTMENT OF TRANSPORTATION, 700 EAST NORRIS DRIVE OTTAWA, IL 61350

TRAFFIC SIGNALS LEGEND

- EXISTING CONTROLLER CABINET
- EXISTING SERVICE INSTALLATION
- EXISTING CONDUIT
- EXISTING SIGNAL HEAD WITH BACKPLATE
- PROPOSED SIGNAL HEAD WITH BACKPLATE
- EXISTING COMBINATION STEEL MAST ARM ASSEMBLY
- EXISTING TRAFFIC SIGNAL POST
- EXISTING HANDHOLE
- EXISTING DOUBLE HANDHOLE
- EXISTING JUNCTION BOX
- EXISTING PEDESTRIAN SIGNAL HEAD
- EXISTING PEDESTRIAN PUSH BUTTON
- EXISTING DETECTOR LOOP
- EXISTING CONDUIT LENGTH AND SIZE PER EXISTING PLANS

FILE NAME * 036667-SHT-TS-PLAN-US34-MAIN

USER NAME * ARR
 PLOT SCALE * 1" = 20'
 PLOT DATE * 02/14

DESIGNED - JKC
 DRAWN - ARR
 CHECKED - JKC
 DATE - 02/14

REVISED -
 REVISED -
 REVISED -
 REVISED -

STATE OF ILLINOIS
 DEPARTMENT OF TRANSPORTATION

TRAFFIC SIGNAL PLAN
 FAP 591 (US 34) AND MAIN STREET

SHEET 1 OF 1 SHEETS STA. TO STA.

F.A.P. RTE.	SECTION	COUNTY	TOTAL SHEETS	SHEET NO.
591	(15)TS-1	DEKALB	6	4
				CONTRACT NO. 66D67
ILLINOIS FED. AID PROJECT				