

F.A.P. RTE.	SECTION	COUNTY	TOTAL SHEETS	SHEET NO.
316	114RS-5	BUREAU	7	1
	ILLINOIS	CONTRACT NO. 66E08		

**INDEX OF SHEETS**

1. COVER SHEET
2. GENERAL NOTES
3. SUMMARY OF QUANTITIES
4. TYPICAL SECTIONS
5. SCHEDULES
- 6-7. DETAILS

**STANDARDS**

- |           |   |
|-----------|---|
| 000001-06 | STANDARD SYMBOLS, ABBREVIATIONS AND PATTERNS                            |
| 001006    | DECIMAL OF AN INCH AND OF A FOOT  |
| 406201-01 | MAILBOX TURNOUT   |
| 424001-07 | PERPENDICULAR CURB RAMPS  |
| 424006-01 | DIAGONAL CURB RAMPS   |
| 424011-01 | CORNER PARALLEL CURB RAMPS  |
| 701006-05 | OFF-RD OPERATIONS, 2L2W, 15' TO 24" FROM PAVEMENT EDGE                  |
| 701306-03 | LANE CLOSURE, 2L2W, SLOW MOVING OPERATIONS DAY ONLY, FOR SPEEDS >45 MPH |
| 701901-03 | TRAFFIC CONTROL DEVICES   |
| 781001-03 | TYPICAL APPLICATIONS RAISED REFLECTIVE PAVEMENT MARKERS                 |

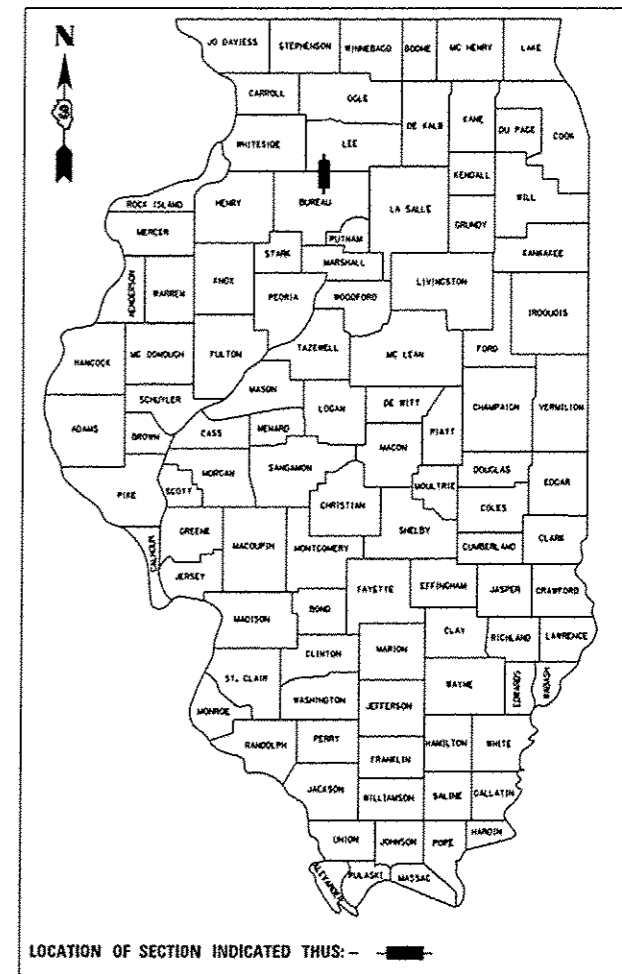
**STATE OF ILLINOIS**  
**DEPARTMENT OF TRANSPORTATION**  
**DIVISION OF HIGHWAYS**  
**PROPOSED**  
**HIGHWAY PLANS**

**FAP ROUTE 316 (IL 26)**  
**SECTION 114RS-5**

**3P RESURFACING**  
**BUREAU COUNTY**

C-93-142-14

D-93-089-14



LOCATION OF SECTION INDICATED THUS: - [black rectangle] -

**FUNCTIONAL CLASSIFICATION**

**RURAL OTHER ARTERIAL**

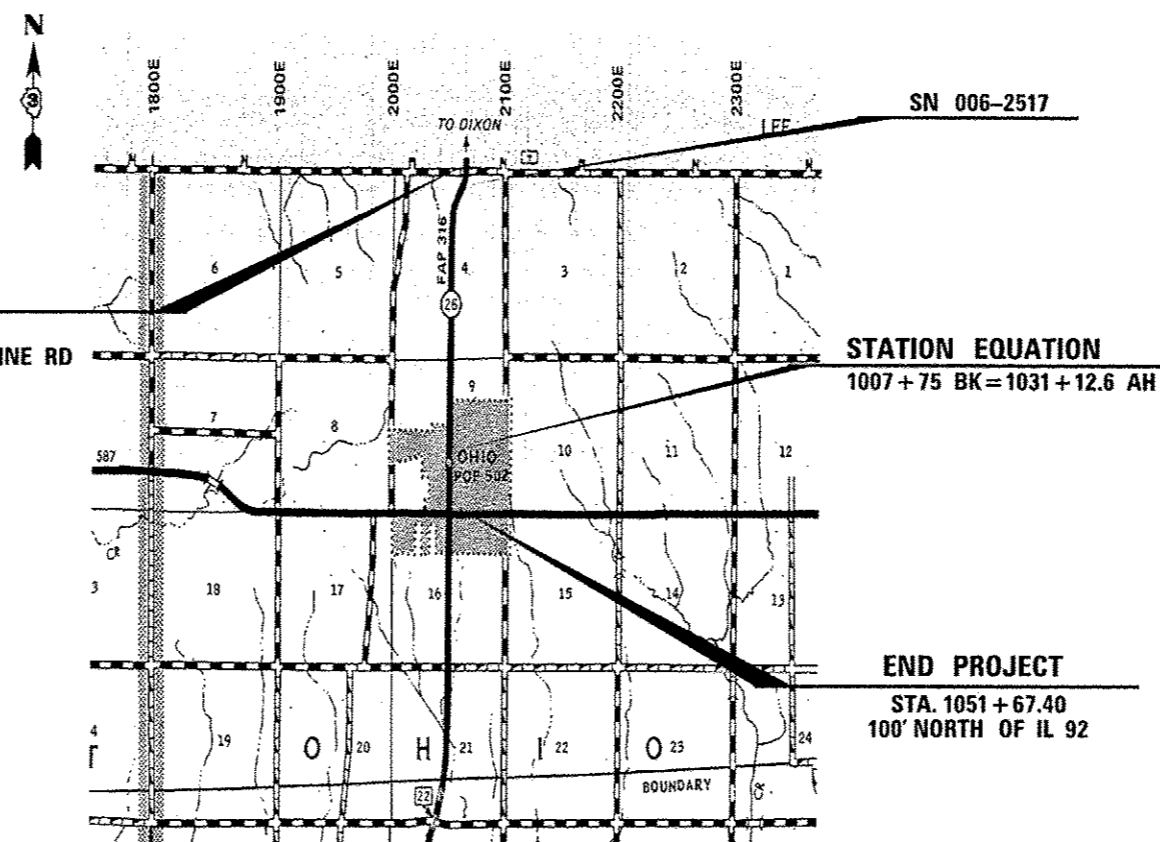
**2014 ADT = 2200**

**P.V. = 84.32% S.U. = 5.45% M.U. = 10.23%**

STATE OF ILLINOIS  
DEPARTMENT OF TRANSPORTATION  
DIVISION OF HIGHWAYS

SUBMITTED *June 16, 2014*  
*Paul Coetzee, P.E.*  
DEPUTY DIRECTOR OF HIGHWAYS, REGION ENGINEER  
*June 27, 2014*  
*John D. Baranzoni, P.E.*  
ENGINEER OF DESIGN AND ENVIRONMENT  
*June 27, 2014*  
*Omer Osman, P.E.*  
DIRECTOR OF HIGHWAYS, CHIEF ENGINEER

**PRINTED BY THE AUTHORITY**  
**OF THE STATE OF ILLINOIS**



**BEGIN PROJECT**

STA. 909 + 80.00  
40' NORTH OF BASELINE RD

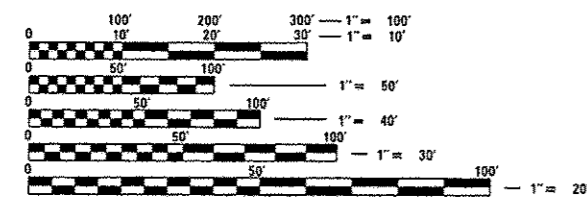
**STATION EQUATION**

1007 + 75 BK = 1031 + 12.6 AH

**END PROJECT**

STA. 1051 + 67.40  
100' NORTH OF IL 92

GROSS LENGTH = 11,849.8 FT. = 2.24 MILES  
NET LENGTH = 11,849.8 FT. = 2.24 MILES



FULL SIZE PLANS HAVE BEEN PREPARED USING STANDARD ENGINEERING SCALES. REDUCED SIZED PLANS WILL NOT CONFORM TO STANDARD SCALES. IN MAKING MEASUREMENTS ON REDUCED PLANS, THE ABOVE SCALES MAY BE USED.

J.U.L.I.E.  
JOINT UTILITY LOCATION INFORMATION FOR EXCAVATION  
1-800-892-0123  
OR 811

DISTRICT 3 NO. (815) 434-6131  
PROJECT ENGINEER: JOE KANNEL, P.E.  
UNIT CHIEF: SCOTT A. FERGUSON, P.E.  
CONTRACT NO. 66E08