

INDEX OF SHEETS:

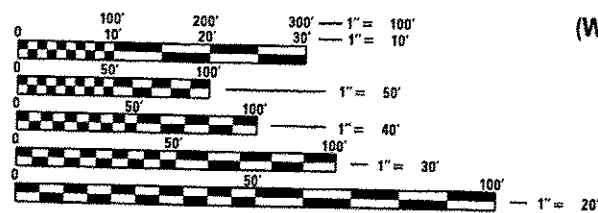
1. COVER SHEET AND SIGNATURES
2. GENERAL NOTES / MIX REQUIREMENTS
- 3.-4. SUMMARY OF QUANTITIES
- 5.-6. SCHEDULE OF QUANTITIES
- 7.-9. TYPICAL SECTIONS
10. LINE DIAGRAM
- 11.-17. GENERAL PLAN SHEETS
- 18.-24. PROPOSED PAVEMENT MARKING SHEETS
- 25.-27. CADD STANDARD 406101-D4
28. CADD STANDARD 440001-D4
- 29.-31. CADD STANDARD 606201-D4
- 32.-33. CADD STANDARD 780001-D4

HIGHWAY STANDARDS:

- 442201-03
- 701311-03
- 701306-03
- 701336-06
- 701901-03
- 780001-04

DESIGN DESIGNATION

MAJOR COLLECTOR (NON-URBAN)
 CLASS 2 TRUCK ROUTE
 2013 AADT 750
 MU = 4.0%
 SU = 2.5%



FULL SIZE PLANS HAVE BEEN PREPARED USING STANDARD ENGINEERING SCALES. REDUCED SIZED PLANS WILL NOT CONFORM TO STANDARD SCALES. IN MAKING MEASUREMENTS ON REDUCED PLANS, THE ABOVE SCALES MAY BE USED.

J.U.L.I.E.
 JOINT UTILITY LOCATION INFORMATION FOR EXCAVATION
 1-800-892-0123
 OR 811

PROJECT ENGINEER: RICH DOTSON (309) 671-3455
 PROJECT MANAGER: RON NOLTE (309) 671-3470

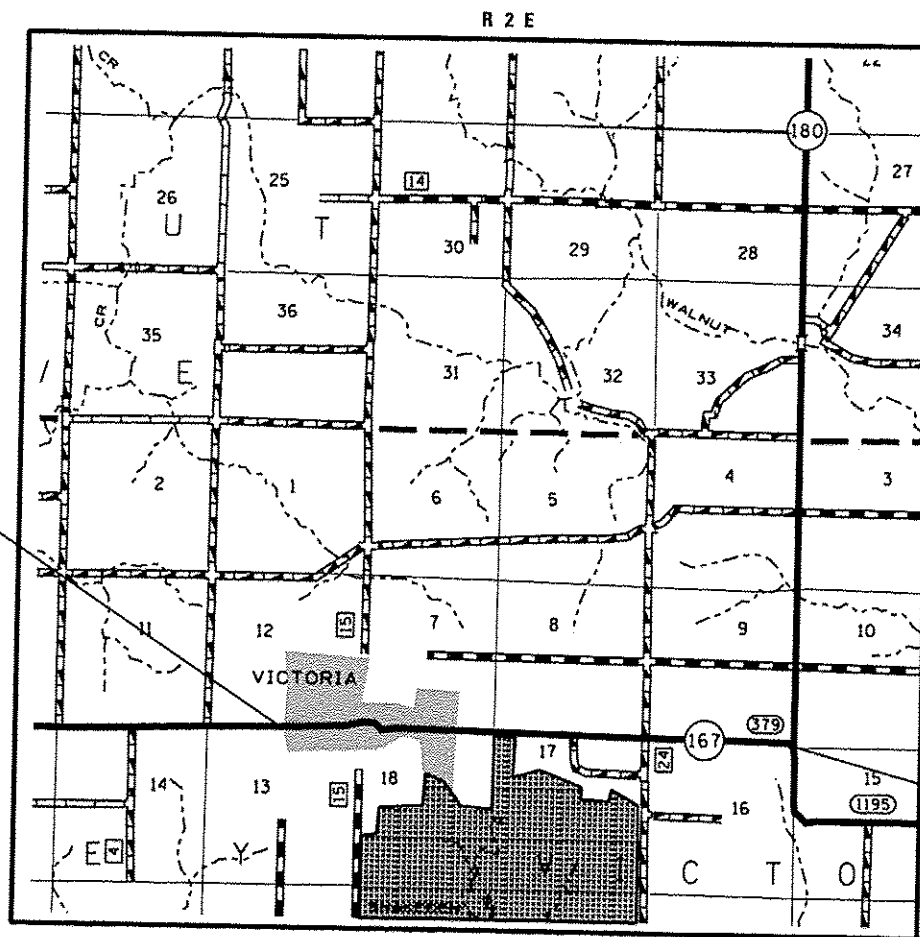
CONTRACT NO. 68B98

STATE OF ILLINOIS
 DEPARTMENT OF TRANSPORTATION
 DIVISION OF HIGHWAYS

**PROPOSED
 HIGHWAY PLANS**

FAS ROUTE 379 (IL 167)
 SECTION (101, 111)RS-3
 MISC. ROADWAY
 KNOX COUNTY

C-94-097-14



PROJECT BEGINS
 STA. 460 + 86.82
 (WEST END OF VICTORIA)

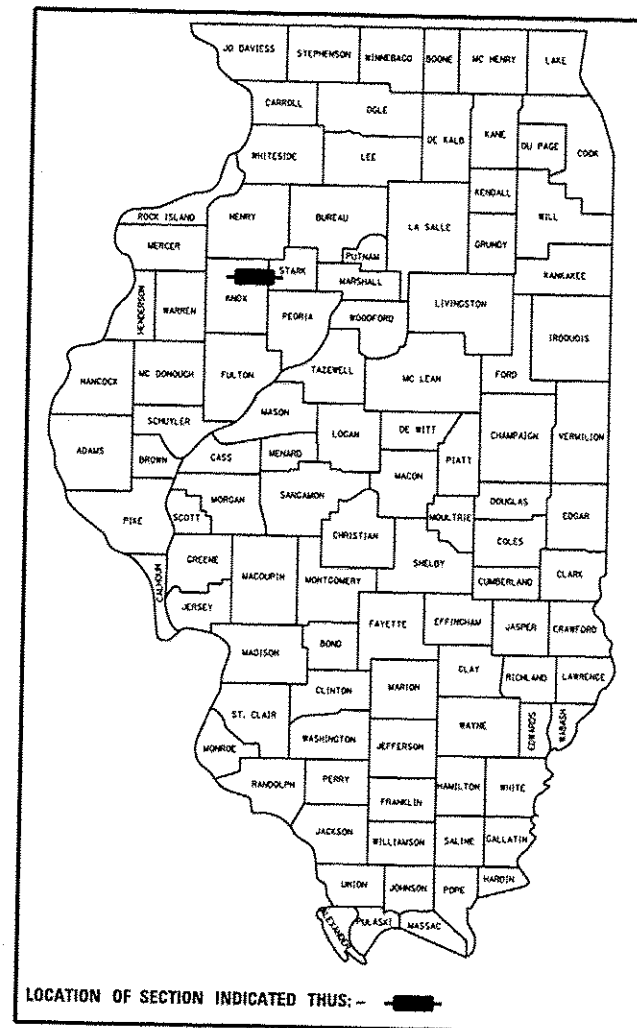
DESCRIPTION:
 FULL DEPTH PATCHING AND INTERMITTENT HMA OVERLAY
 ALONG IL 167 FROM STA. 460 + 86.82 (WEST VILLAGE LIMITS)
 TO STA. 641 + 50 (INTERSECTION OF IL 180).

PROJECT ENDS
 STA. 641 + 50
 (INTERSECTION OF IL 180)

GROSS LENGTH = 18010 FT. = 3.411 MILE
 NET LENGTH = 18010 FT. = 3.411 MILE

F.A.S. RTE.	SECTION	COUNTY	TOTAL SHEETS	SHEET NO.
379	(101, 111)RS-3	KNOX	33	1

D-94-040-14



LOCATION OF SECTION INDICATED THUS: - [black rectangle] -

STATE OF ILLINOIS
 DEPARTMENT OF TRANSPORTATION
 DIVISION OF HIGHWAYS

SUBMITTED May 16 20 14
Kenneth A. Oppenell
 DEPUTY DIRECTOR OF HIGHWAYS, REGION ENGINEER

June 27 20 14
John D. Baranzelli PE, Jr.
 acting ENGINEER OF DESIGN AND ENVIRONMENT

June 27 20 14
Omer Osman PE, Jr.
 DIRECTOR OF HIGHWAYS, CHIEF ENGINEER

PRINTED BY THE AUTHORITY
 OF THE STATE OF ILLINOIS