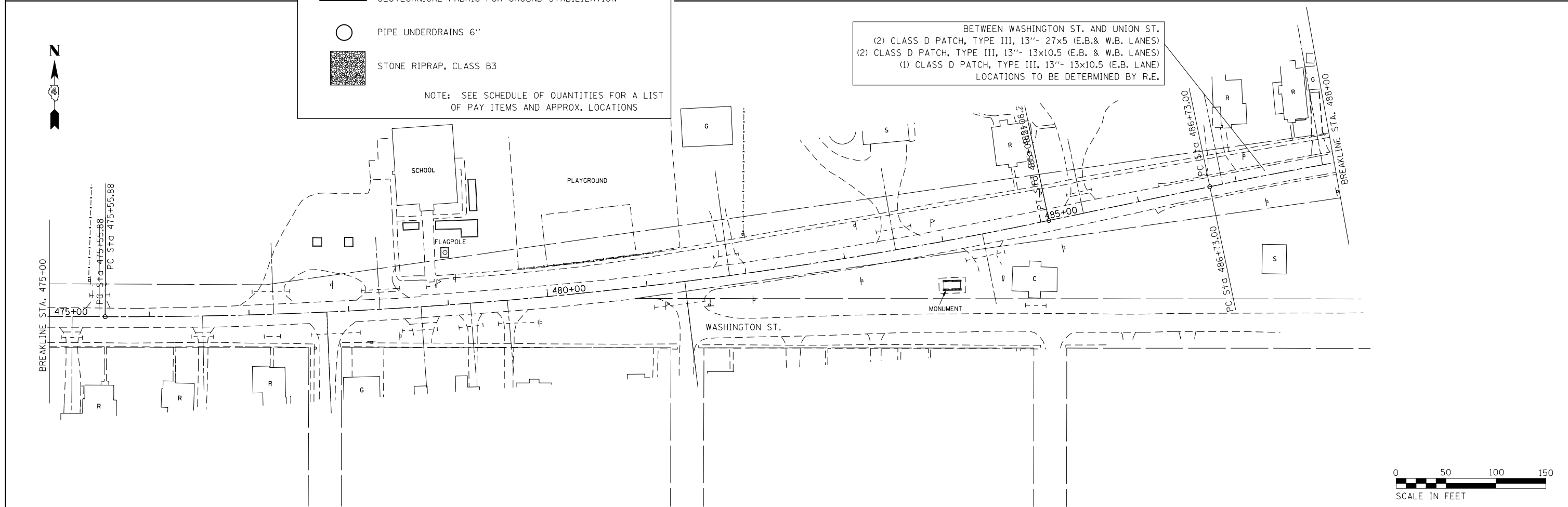


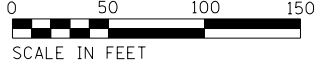
LEGEND

- CLASS D PATCH, TYPE III, 13" & TYPE IV, 13"
- HMA SURFACE REMOVAL, 1 3/4" (ONLY IN GUTTER SECTIONS)
HMA SURFACE COURSE, MIX "D", N50- 2"
- SUB-BASE GRANULAR MATERIAL, TYPE B 12"
- GEOTECHNICAL FABRIC FOR GROUND STABILIZATION
- PIPE UNDERDRAINS 6"
- STONE RIPRAP, CLASS B3

NOTE: SEE SCHEDULE OF QUANTITIES FOR A LIST OF PAY ITEMS AND APPROX. LOCATIONS



BETWEEN WASHINGTON ST. AND UNION ST.
 (2) CLASS D PATCH, TYPE III, 13"- 27x5 (E.B. & W.B. LANES)
 (2) CLASS D PATCH, TYPE III, 13"- 13x10.5 (E.B. & W.B. LANES)
 (1) CLASS D PATCH, TYPE III, 13"- 13x10.5 (E.B. LANE)
 LOCATIONS TO BE DETERMINED BY R.E.



FILE NAME = D488778-SHT-REMOVAL.dgn	USER NAME = aubreys	DESIGNED -	REVISED -
		DRAWN -	REVISED -
	PLOT SCALE = 100.0000' / 1".	CHECKED -	REVISED -
Default	PLOT DATE = 5/16/2014	DATE -	REVISED -

**STATE OF ILLINOIS
 DEPARTMENT OF TRANSPORTATION**

GENERAL PLAN			
SCALE:	SHEET	OF SHEETS	STA. TO STA.

F.A.S. RTE.	SECTION	COUNTY	TOTAL SHEETS	SHEET NO.
379	(101,111)RS-3	KNOX	33	11
CONTRACT NO. 68B98				
ILLINOIS FED. AID PROJECT				