

F.A.P. RTE.	SECTION	COUNTY	TOTAL SHEETS	SHEET NO.
665	137W-1; (138, 139)W-2	HENDERSON WARREN	15	1
CONTRACT NO. 68C07		ILLINOIS		

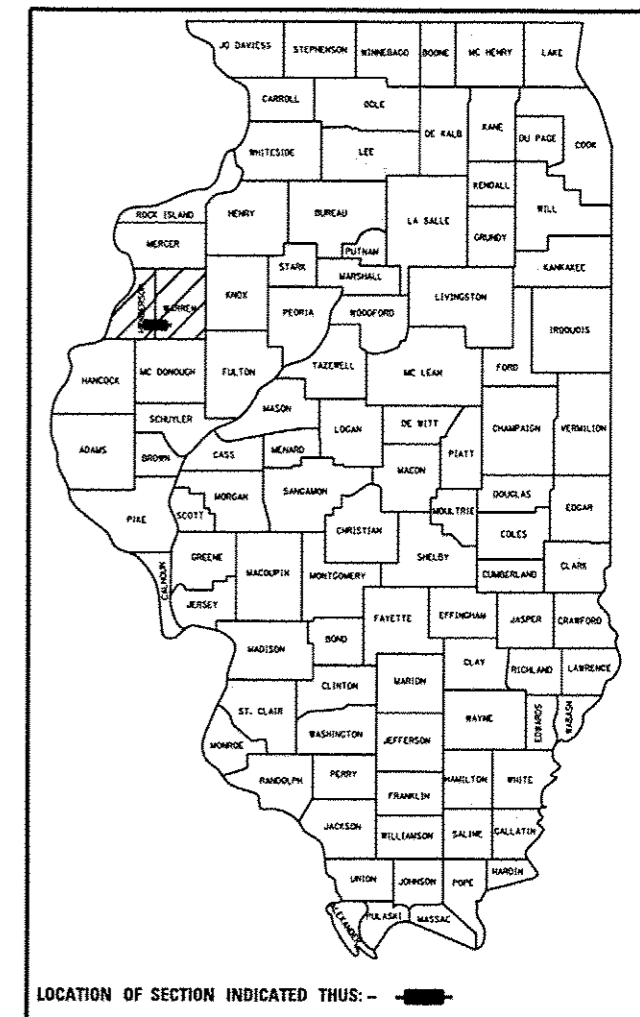
INDEX OF SHEETS

1. COVER SHEET
2. GENERAL NOTES/COMMITMENTS/JOB SPECIFIC NOTES
3. SUMMARY OF QUANTITIES
- 4.-5. TYPICAL SECTIONS
- 6.-10. SCHEDULES OF QUANTITIES
11. LINE DIAGRAM
12. SIDE ROADS DETAIL
- 13.-15. DISTRICT STANDARDS

STATE OF ILLINOIS DEPARTMENT OF TRANSPORTATION DIVISION OF HIGHWAYS PROPOSED HIGHWAY PLANS

FAP 665 (IL 116)
SECTION 137W-1; (138, 139)W-2
TYPE OF IMPROVEMENT: WIDENING
HENDERSON & WARREN COUNTIES
C-94-106-14

D-94-049-14

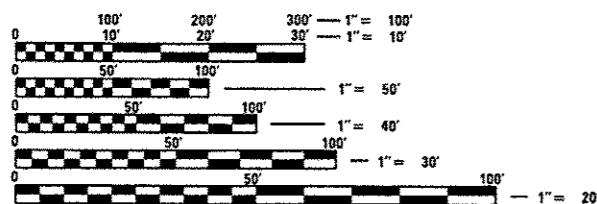


HIGHWAY STANDARDS

- 701311-03
- 701326-04
- 701901-03
- 780001-04

DESIGN DESIGNATION:

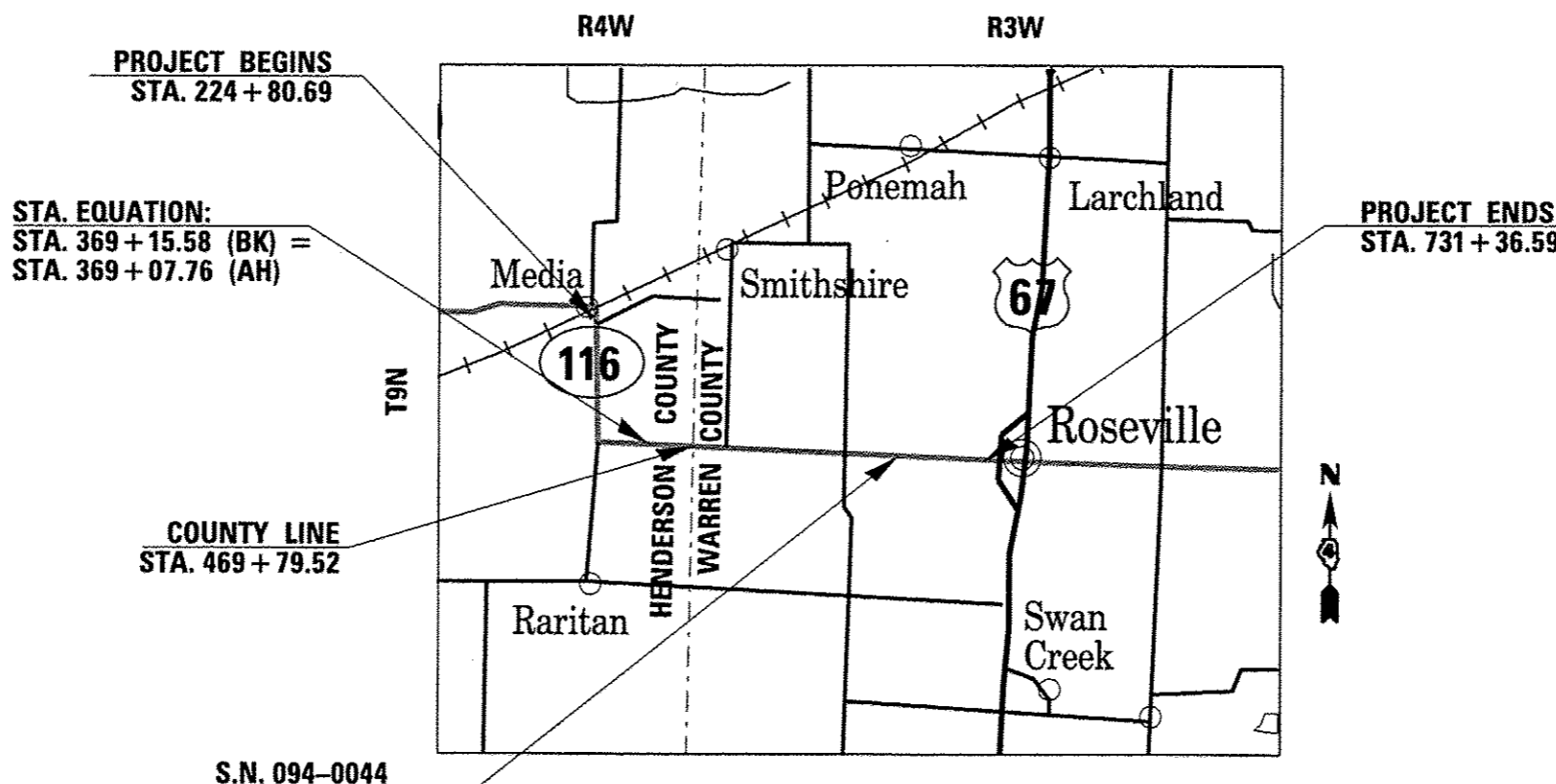
MINOR ARTERIAL NON-URBAN
ADT: 1,050 (2013)
MU = 10% (2013)
SU = 7.06% (2013)



FULL SIZE PLANS HAVE BEEN PREPARED USING STANDARD ENGINEERING SCALES. REDUCED SIZED PLANS WILL NOT CONFORM TO STANDARD SCALES. IN MAKING MEASUREMENTS ON REDUCED PLANS, THE ABOVE SCALES MAY BE USED.

J.U.L.I.E.
JOINT UTILITY LOCATION INFORMATION FOR EXCAVATION
1-800-892-0123
OR 811

PROJECT ENGINEER: CHRISTOPHER MAUSHARD (309)671-3453
PROJECT MANAGER: MIKE MOHAMED (309)671-3462
CATALOG NO. 035145-00D
CONTRACT NO. 68C07



GROSS LENGTH = 50,634 FT. = 9.59 MILES
NET LENGTH = 45,130.72 FT. = 8.55 MILES

DESCRIPTION OF WORK

THIS PROJECT CONSISTS OF WIDENING ON IL 116 FROM EAST OF MEDIA TO 0.9 MILE WEST OF US 67 NEAR ROSEVILLE.

STATE OF ILLINOIS
DEPARTMENT OF TRANSPORTATION
DIVISION OF HIGHWAYS

SUBMITTED May 21 20 14
Benedict A. Giametta
DEPUTY DIRECTOR OF HIGHWAYS, REGION ENGINEER

June 27 20 14
John D. Baranzoni, PE
ENGINEER OF DESIGN AND ENVIRONMENT

June 27 20 14
Omer Osman, PE
DIRECTOR OF HIGHWAYS, CHIEF ENGINEER

**PRINTED BY THE AUTHORITY
OF THE STATE OF ILLINOIS**