

STATE OF ILLINOIS  
DEPARTMENT OF TRANSPORTATION  
DIVISION OF HIGHWAYS  
**PROPOSED  
SPRING ROAD REPAIR**

FOR INDEX OF SHEETS, SEE SHEET NO. 2

WHEREVER IN THESE PLANS SECTION (28)RS-8,(29)RS-6,(30)RS-2 IS MENTIONED, IT SHALL MEAN SECTION (28)I-2,(29)I-3,(30)I-1

FAP ROUTE 315 (US RTE 136)  
SECTION (28) I-2, (29) I-3, (30) I-1

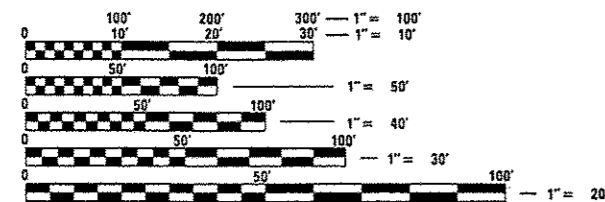
**RESURFACING  
HANCOCK COUNTY**

C-96-020-14

F.A.P. RTE.	SECTION	COUNTY	TOTAL SHEETS	SHEET NO.
315	-	HANCOCK	7	1
		ILLINOIS	CONTRACT NO. 72G51	

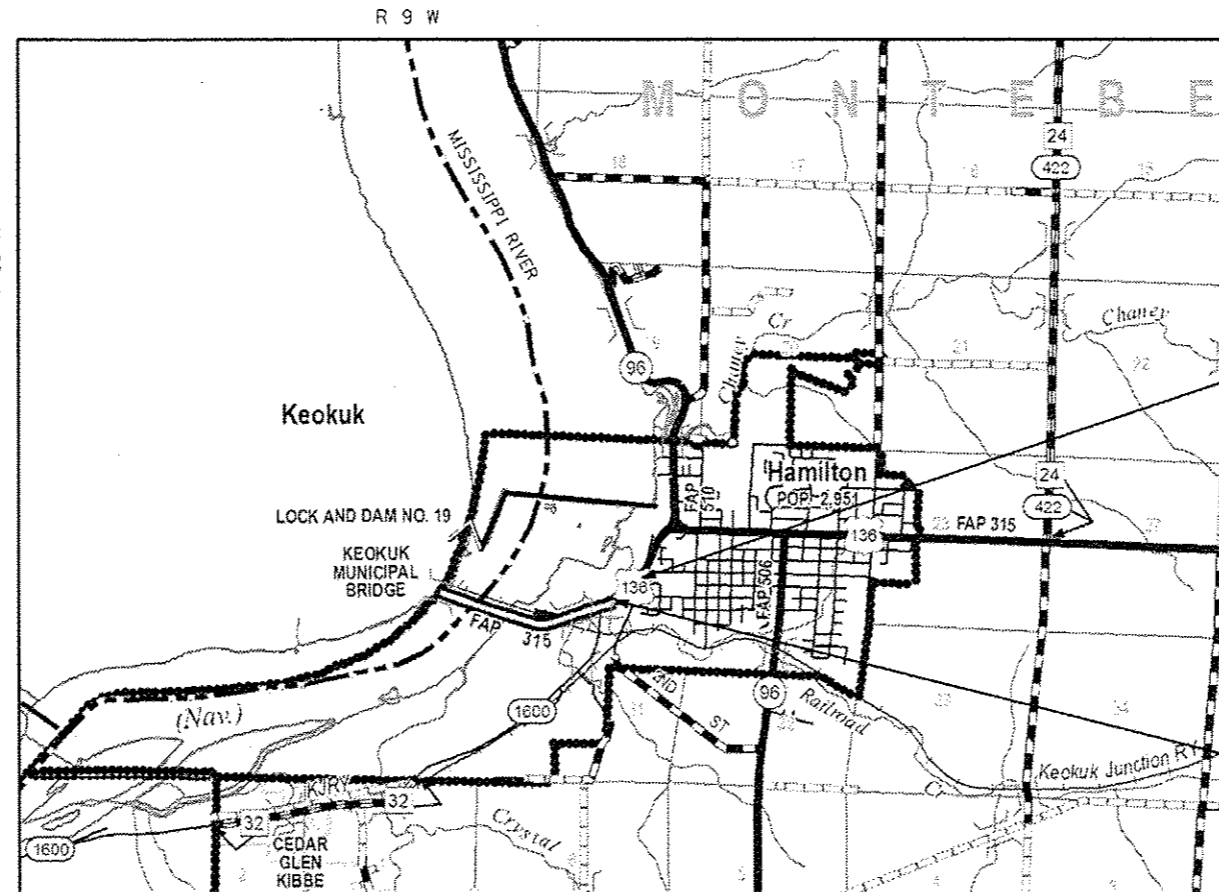
\* (28) I-2, (29) I-3, (30) I-1

D-96-020-14



FULL SIZE PLANS HAVE BEEN PREPARED USING STANDARD ENGINEERING SCALES. REDUCED SIZED PLANS WILL NOT CONFORM TO STANDARD SCALES. IN MAKING MEASUREMENTS ON REDUCED PLANS, THE ABOVE SCALES MAY BE USED.

J.U.L.I.E.  
JOINT UTILITY LOCATION INFORMATION FOR EXCAVATION  
1-800-892-0123  
OR 811



LOCATION MAP

NET LENGTH = 861.43 FT. = 0.163 MILE

END PROJECT  
STA. 127+50.00

BEGIN PROJECT  
STA. 118+88.57

FAP ROUTE 315 (US RTE 136)  
ADT (2013) = 12400  
PV = 93.34% SU = 3.43%, MU = 3.23%  
SPEED LIMIT = 30 MPH (POSTED)

STATE OF ILLINOIS  
DEPARTMENT OF TRANSPORTATION  
DIVISION OF HIGHWAYS

SUBMITTED May 19 20 14  
Page 2 Draft  
DEPUTY DIRECTOR OF HIGHWAYS, REGION ENGINEER

June 27 20 14  
John D. Baranzelli PE  
ENGINEER OF DESIGN AND ENVIRONMENT

June 27 20 14  
Omer Osman PE  
DIRECTOR OF HIGHWAYS, CHIEF ENGINEER

**PRINTED BY THE AUTHORITY  
OF THE STATE OF ILLINOIS**

PLANS AND DESIGN ENGINEER:  
MICHAEL IRWIN (217) 524-7765

CONTRACT NO. 72G51

INDEX OF SHEETS

1. COVER
2. INDEX OF SHEETS, GENERAL NOTES, AND HIGHWAY STANDARDS
3. SUMMARY OF QUANTITIES
4. TYPICAL SECTIONS
5. TYPICAL SECTIONS
6. SCHEDULES
7. PLAN


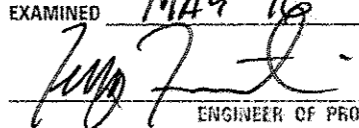

HIGHWAY STANDARDS

- 701001-02 OFF-RD OPERATIONS, 2L, 2W, MORE THAN 15' AWAY FROM EDGE OF PAVEMENT  
 701006-03 OFF-RD OPERATIONS, 2L, 2W, 15' TO 24" FROM EDGE OF PAVEMENT  
 701011-04 OFF-RD MOVING OPERATIONS, 2L, 2W, DAY ONLY  
 701701-09 URBAN LANE CLOSURE, MULTILANE INTERSECTION  
 701901-02 TRAFFIC CONTROL DEVICES

GENERAL NOTES

1. ANY REFERENCE TO THE STANDARDS THROUGHOUT THE PLANS SHALL BE INTERPRETED TO BE THE LATEST STANDARDS OF THE DEPARTMENT AS INCLUDED IN THE PLANS.

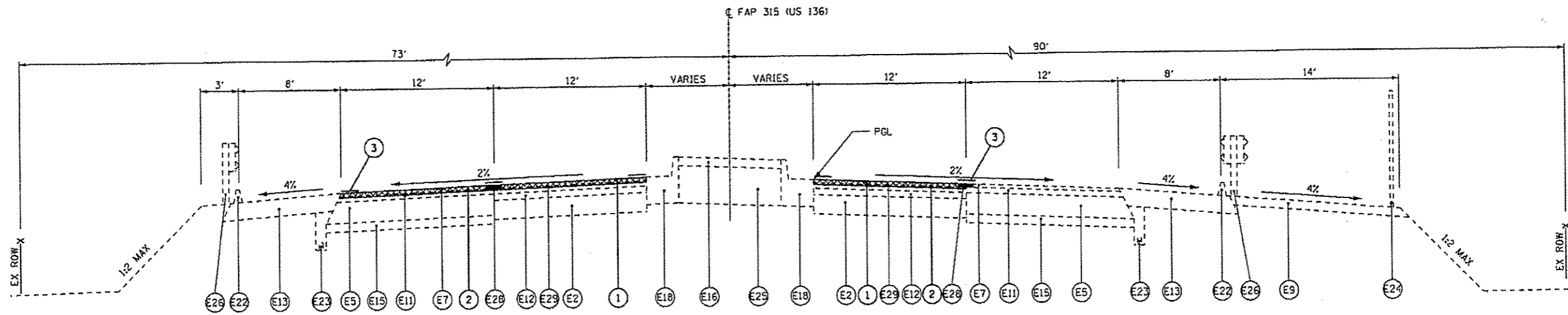
MIXTURE REQUIREMENTS		
THE FOLLOWING MIXTURE REQUIREMENTS ARE APPLICABLE FOR THIS PROJECT		
MIXTURE USE(S):	SURFACE	BASE COURSE WIDENING
AC/PG:	PG 64-22	PG 64-22
DESIGN AIR VOIDS:	4.0% @ N50	4.0% @ N50
MIXTURE COMPOSITION:	IL 9.5	IL 19.0
FRICITION AGGREGATE:	MIX C	N/A
QUALITY MANAGEMENT:	QC/QA	QC/QA

STATE OF ILLINOIS DEPARTMENT OF TRANSPORTATION DIVISION OF HIGHWAYS DISTRICT 6	
EXAMINED	May 16 <sup>th</sup> 20 14  ENGINEER OF OPERATIONS
EXAMINED	MAY 16 20 14  ENGINEER OF PROJECT IMPLEMENTATION
EXAMINED	May 15 20 14  ENGINEER OF PROGRAM DEVELOPMENT

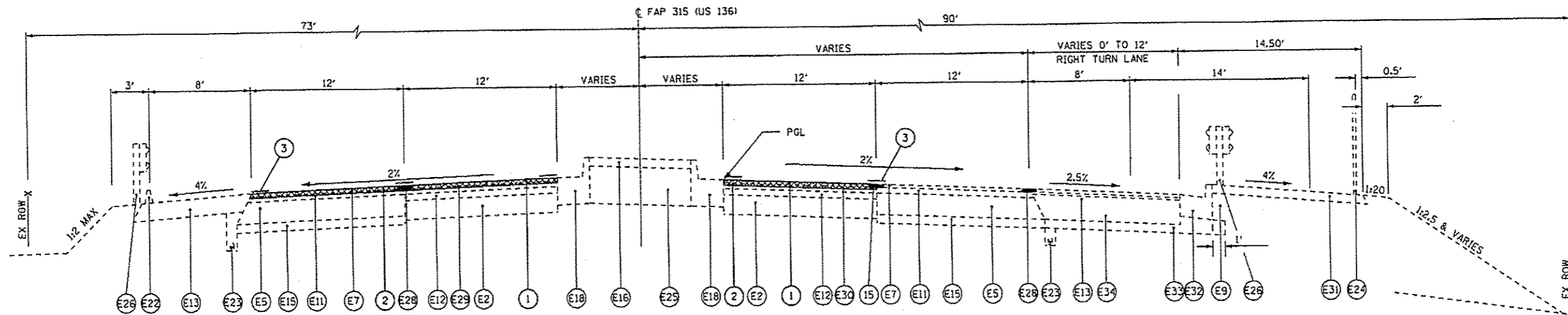
CODE NO.	ITEM	UNIT	TOTAL QUANTITY
40600275	BITUMINOUS MATERIALS (PRIME COAT)	LB	1551
40600990	TEMPORARY RAMP	SQ YD	140
40603340	HOT-MIX ASPHALT SURFACE COURSE, MIX D. N70	TON	431
44000157	HOT-MIX ASPHALT SURFACE REMOVAL 2"	SQ YD	3446
67100100	MOBILIZATION	L SUM	1
70100450	TRAFFIC CONTROL AND PROTECTION, STANDARD 701201	L SUM	1
70100460	TRAFFIC CONTROL AND PROTECTION, STANDARD 701306	L SUM	1
70100500	TRAFFIC CONTROL AND PROTECTION, STANDARD 701326	L SUM	1
70300100	SHORT-TERM PAVEMENT MARKING	FOOT	349

CODE NO.	ITEM	UNIT	TOTAL QUANTITY
70301000	WORK ZONE PAVEMENT MARKING REMOVAL	SQ FT	116
78001120	PAINT PAVEMENT MARKING - LINE 5"	FOOT	2924
78100100	RAISED REFLECTIVE PAVEMENT MARKER	EACH	27
78300200	RAISED REFLECTIVE PAVEMENT MARKER REMOVAL	EACH	27

FILE NAME *	USER NAME * branham	DESIGNED -	REVISED -	<b>STATE OF ILLINOIS DEPARTMENT OF TRANSPORTATION</b>	<b>SUMMARY OF QUANTITIES</b>	S.B.I. RTE.	SECTION	COUNTY	TOTAL SHEETS	SHEET NO.
c:\pwork\pudost\branham\032218\0022031-shc-502.dgn	DRAWN -	REVISED -	96			(281RS-8, 291RS-6, 301RS-2)	HANCOCK	7	3	
PLOT SCALE * 2.7644" / 1"	CHECKED -	REVISED -	CONTRACT NO. 72051							
PLOT DATE * Jun-19-2014 09:18:33AM	DATE -	REVISED -	ILLINOIS FED. AID PROJECT							
SHT_PLAN				SCALE: _____	SHEET _____ OF _____ SHEETS	STA. _____ TO STA. _____				



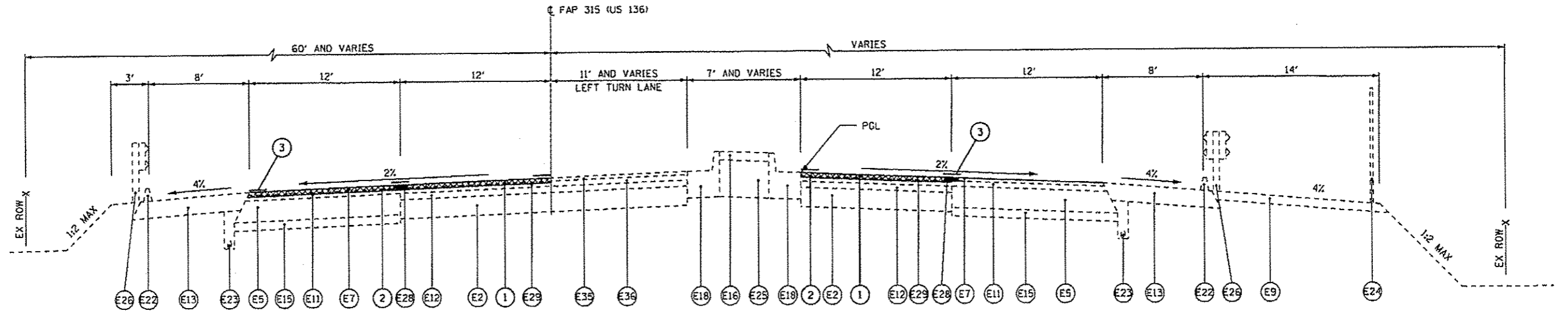
**TYPICAL FAP 315 (US 136) SECTION**  
 STA 1+316.500 TO STA 1+395.475 (METRIC)  
 STA 118+88.57 TO STA 121+47.63 (ENGLISH)



**TYPICAL FAP 315 (US 136) SECTION**  
 STA 1+395.475 TO STA 1+516.220 (METRIC)  
 STA 121+47.63 TO STA 125+41.33 (ENGLISH)

NOTE: LEGEND ON SHEET 5

FILE NAME * c:\p\work\p\uidot\branham\1202218\022051-shr-typical.dgn Default	USER NAME * branham	DESIGNED - DMS	REVISED - _____	<b>STATE OF ILLINOIS</b> <b>DEPARTMENT OF TRANSPORTATION</b>	<b>TYPICAL SECTION</b> <b>F.A.P. 315 (US 136)</b>	F.A.P. RTE. 315	SECTION *	COUNTY HANCOCK	TOTAL SHEETS 7	SHEET NO. 4
	PLOT SCALE : 48.0000' / 1"	CHECKED - _____	REVISED - _____			SCALE: _____ SHEET 1 OF 2 SHEETS	STA. _____ TO STA. _____	ILLINOIS FED. AID PROJECT CONTRACT NO. 72G51		
PLOT DATE * Jun-19-2014 09:10:10AM	DATE - _____	REVISED - _____	REVISED - _____	(28)RS-8,(29)RS-6,(30)RS-2						



**TYPICAL FAP 315 (US 136) SECTION**

STA 1+516.220 TO STA 1+583.823 (METRIC)  
 STA 125+41.33 TO STA 127+50.00 (ENGLISH)

**EXISTING LEGEND**

- (E1) EXISTING 225 mm - 150 mm - 225 mm PCC PAVEMENT
- (E2) EXISTING PCC PAVEMENT, 229 mm
- (E3) EXISTING PCC BASE COURSE WIDENING, 229 mm
- (E4) EXISTING BITUMINOUS CONCRETE BASE COURSE WIDENING, 229 mm
- (E5) EXISTING BITUMINOUS BASE COURSE, 254 mm
- (E6) EXISTING BITUMINOUS CONCRETE SURFACE, 32 mm
- (E7) EXISTING BITUMINOUS CONCRETE SURFACE, 38 mm
- (E8) EXISTING BITUMINOUS CONCRETE SURFACE, 75 mm
- (E9) EXISTING BITUMINOUS CONCRETE SURFACE, 102 mm
- (E10) EXISTING BITUMINOUS CONCRETE BINDER, 44 mm
- (E11) EXISTING BITUMINOUS CONCRETE BINDER, 64 mm
- (E12) EXISTING BITUMINOUS CONCRETE LEVELING BINDER, VARIABLE THICKNESS
- (E13) EXISTING BITUMINOUS SHOULDER, 203 mm
- (E14) EXISTING AGGREGATE SHOULDER, 203 mm
- (E15) EXISTING SUBBASE GRANULAR MATERIAL, TYPE A, 102 mm
- (E16) EXISTING CONCRETE MEDIAN SURFACE, 102 mm
- (E17) EXISTING COMBINATION CONCRETE CURB AND GUTTER, TYPE B-15.60
- (E18) EXISTING COMBINATION CONCRETE CURB AND GUTTER, TYPE B-22.60

- (E19) EXISTING GUTTER
- (E20) EXISTING TYPE B GUTTER
- (E21) EXISTING GUTTER SPECIAL
- (E22) EXISTING BITUMINOUS CURB
- (E23) EXISTING PIPE UNDERDRAIN, 102 mm
- (E24) EXISTING CHAIN LINK FENCE, 1.5 m
- (E25) EXISTING SAND FILL
- (E26) EXISTING GUARDRAIL
- (E27) EXISTING SIDEROAD PAVEMENT
- (E28) EXISTING STRIP REFLECTIVE CRACK CONTROL TREATMENT
- (E29) EXISTING LEVELING BINDER, 1/4"
- (E30) EXISTING LEVELING BINDER, 1/2"
- (E31) EXISTING INCIDENTAL BITUMINOUS SURFACING, 100 mm
- (E32) EXISTING COMBINATION CONCRETE CURB AND GUTTER, TYPE B-15.60
- (E33) EXISTING SUB-BASE GRANULAR MATERIAL, TYPE B (100 mm MIN)
- (E34) EXISTING BITUMINOUS CONCRETE BASE COURSE WIDENING, 300 mm (WHEN WIDTH < 1.8 m)  
EXISTING BITUMINOUS BASE COURSE, 300 mm (WHEN WIDTH > 1.8 m)
- (E35) EXISTING BITUMINOUS CONCRETE SURFACE COURSE, 1 1/2"
- (E36) EXISTING LEVELING BINDER (MACHINE METHOD), 3/4"

**PROPOSED LEGEND**

- (1) PROPOSED HMA SURFACE COURSE, MIX "D", N70, 2"
- (2) PROPOSED BITUMINOUS SURFACE REMOVAL, 2"
- (3) PROPOSED PAVEMENT MARKING, 5"

FILE NAME *	USER NAME * bgrnhamm	DESIGNED - OMS	REVISED -
at:\pw\work\pntdot\brnhamm\10352210\0672051-sh1-typtool.dgn		DRAWN - OMS	REVISED -
Default	PLOT SCALE * 48.6882 ' / in	CHECKED -	REVISED -
	PLOT DATE * Jun-19-2014 8:46:35AM	DATE -	REVISED -

**STATE OF ILLINOIS  
 DEPARTMENT OF TRANSPORTATION**

TYPICAL SECTIONS		F.A.P. RTE. *	SECTION	COUNTY	TOTAL SHEETS	SHEET NO.
F.A.P. 315 (US 136)		315	*	HANCOCK	7	5
SCALE: _____ SHEET 2 OF 2 SHEETS		STA. _____ TO STA. _____		ILLINOIS FED. AID PROJECT		
				CONTRACT NO. 72051		

MAINLINE IMPROVEMENTS										
BITUMINOUS MATERIAL (PRIME COAT) RATE - 0.00038 T/SY AGGREGATE (PRIME COAT) RATE - 0.002 T/SY BITUMINOUS SURFACE / BINDER (112 LBS) RATE - 0.056 T/SY+IN				40600275 BITUMINOUS MATERIALS (PRIME COAT)	40603340 HMA SURFACE COURSE MIX "D", N 70 d=2"	44000157 HMA SURFACE REMOVAL, 2"	78100100 RAISED REFL. PAVEMENT MARKER	78300200 RAISED REFL. PAVEMENT MARKER REMOVAL		
LOCATION STATION TO STATION	LENGTH FT	WIDTH FT	AREA SQ YD	LB	TON	SQ YD	EACH	EACH		
STA. 117+88.57 TO STA. 127+50.00 WBPL, WBDL	861.43	24.00	2,297.15	1033.72	287.15	2,297.15	19	19		
STA. 117+88.57 TO STA. 127+50.00 ECTL	861.43	12.00	1,148.57	516.86	143.57	1,148.57	8	8		
TOTAL:				1550.57	430.72	3,445.72	27	27		
USE:				1551	431	3446	27	27		

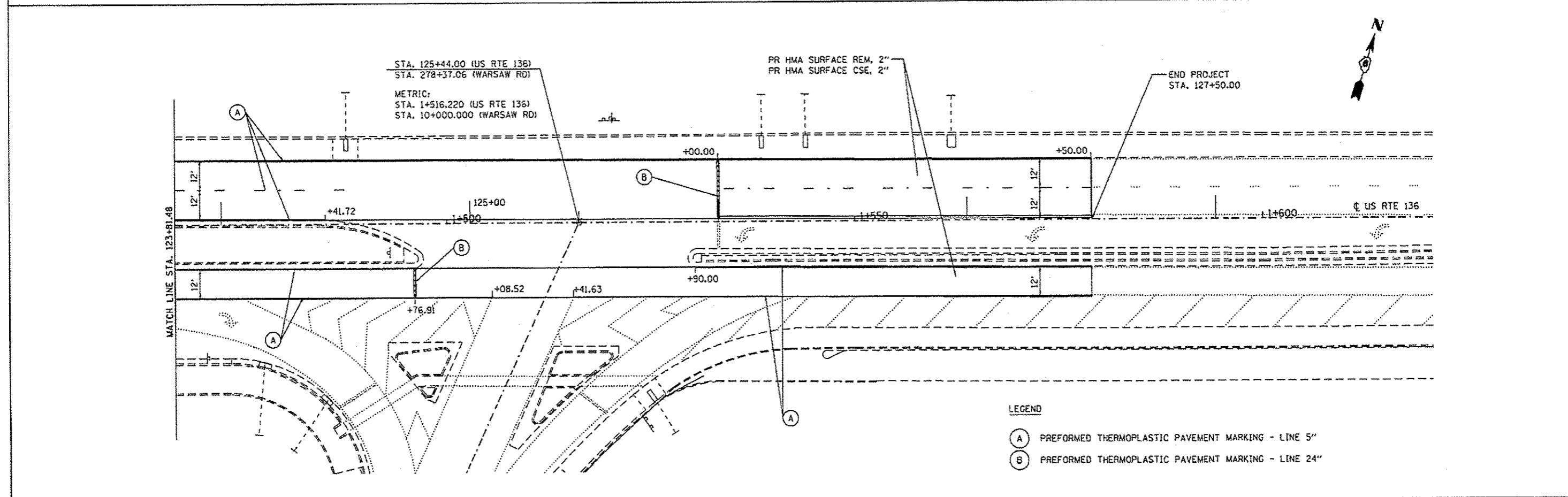
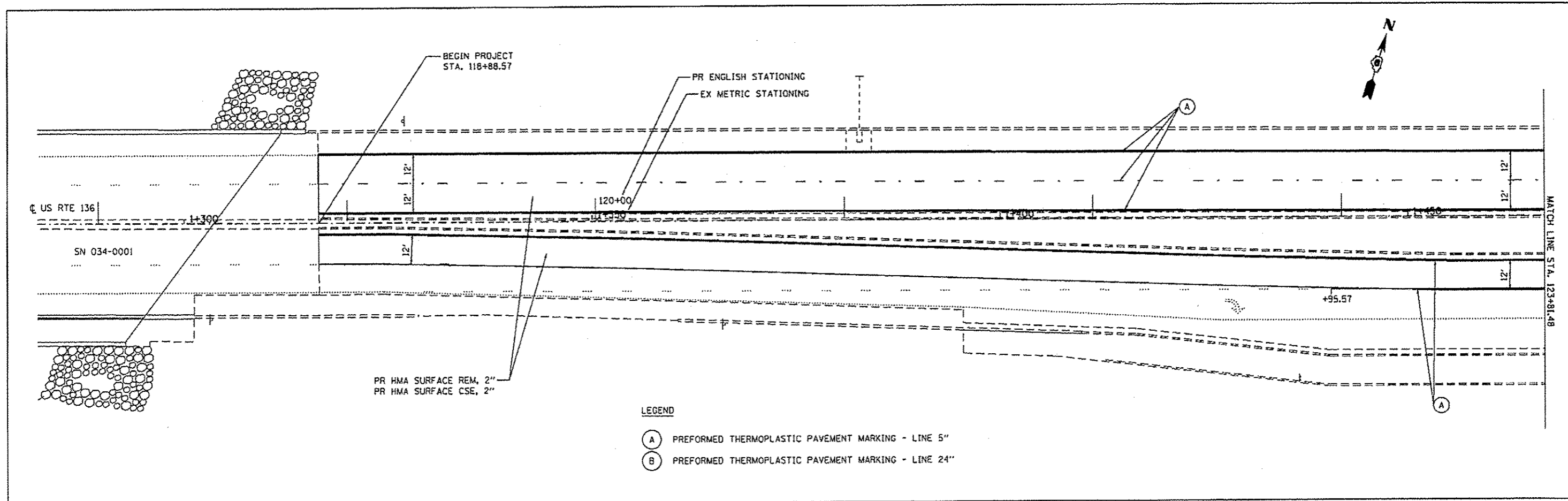
40600990 TEMPORARY RAMP (SQ YD)			
LOCATION	LENGTH FT	WIDTH FT	AREA SQ YD
STATION TO STATION - LT/RT			
STA. 117+88.57 LT	6.7	24.0	17.8
STA. 117+88.58 RT	6.7	12.0	8.9
STA. 127+50.0 LT	6.7	24.0	17.9
STA. 127+50.0 RT	6.7	12.0	8.9
TOTAL:			140.3
USE:			140

78006120 PERFORMED THERMOPLASTIC PAVEMENT MARKING - LINE 5" (FOOT)					
LOCATION		LENGTH FT	COLOR YELLOW/ WHITE	CENTERLINE SKIP-DASH FT	EDGE LINE SOLID FT
STA. 118+88.57 TO STA. 124+49.39	LT CL	560.82	YELLOW	140.21	
STA. 126+00.00 TO STA. 127+50.0	LT CL	150.00	YELLOW	37.50	
STA. 118+88.57 TO STA. 118+42.16	RT CL	46.41	YELLOW	11.60	
STA. 118+88.57 TO STA. 127+50.0	LT DL	861.43	WHITE		861.43
STA. 118+88.57 TO STA. 124+41.72	LT PL	553.15	YELLOW		553.15
STA. 126+00.00 TO STA. 127+50.0	LT PL	150.00	YELLOW		150.00
STA. 118+88.57 TO STA. 124+76.91	RT TL	588.34	YELLOW		588.34
STA. 122+95.57 TO STA. 125+08.5	RT TL	212.95	WHITE		212.95
STA. 125+41.63 TO STA. 127+50.0	RT TL	208.37	WHITE		208.37
STA. 125+90.00 TO STA. 127+50.0	RT TL	160.00	YELLOW		160.00
SUB TOTAL:				189.31	2,734.24
TOTAL:				2,923.55	
USE:				2,924	

LOCATION	LENGTH FT	70300100 SHORT TERM PAV'T MARK FOOT	70301000 WORK ZONE PAV'T MARK REM w=4" SQ FT
STA. 118+88.57 TO STA 124+49.3	LT CL	560.82	56.08
STA. 126+00.00 TO STA 127+50.0	LT CL	150.00	15.00
STA. 118+88.57 TO STA 118+42.16	RT CL	46.41	4.64
STA. 118+88.57 TO STA 127+50.0	LT DL	861.43	86.14
STA. 118+88.57 TO STA 124+41.7	LT PL	553.15	55.32
STA. 126+00.00 TO STA 127+50.0	LT PL	150.00	15.00
STA. 118+88.57 TO STA 124+76.9	RT TL	588.34	58.83
STA. 122+95.57 TO STA 125+08.5	RT TL	212.95	21.30
STA. 125+41.63 TO STA 127+50.0	RT TL	208.37	20.84
STA. 125+90.00 TO STA 127+50.0	RT TL	160.00	16.00
TOTAL:		349.15	116.38
USE:		349	116

78006180 PERFORMED THERMOPLASTIC PAVEMENT MARKING LINE 24" (FOOT)		
LOCATION	TYPE	LENGTH WHITE FT
STA. 124+76.91	RT STOP BAR	12.00
STA. 126+00.00	RT STOP BAR	24.00
TOTAL:		36.00
USE:		36

FILE NAME *	USER NAME * bronhense	DESIGNED - DMS	REVISED -	STATE OF ILLINOIS DEPARTMENT OF TRANSPORTATION	SCHEDULE OF QUANTITY			F.A.P. RTE.	SECTION	COUNTY	TOTAL SHEETS	SHEET NO.	
at:\p\work\pavdot\bronhense\032218\032218\2051-akt-sched.dgn		DRAWN - DMS	REVISED -		SCALE:	SHEET	OF	SHEETS	STA.	TO STA.	HANCOCK	7	6
Default		CHECKED -	REVISED -		CONTRACT NO. 72651								
		DATE - Jun-19-2014 08:49:58AM	REVISED -		ILLINOIS FED. AID PROJECT								



FILE NAME = c:\pawork\p101dot\brnham\1036210\027201-shr\plan.dgn	USER NAME = brnham	DESIGNED - DMS	REVISED - _____	<b>STATE OF ILLINOIS DEPARTMENT OF TRANSPORTATION</b>	<b>PLAN SHEET F.A.P. 315 (US 136)</b>	F.A.P. RTE. = 315	SECTION =	COUNTY = HANCOCK	TOTAL SHEETS = 7	SHEET NO. = 7
	PLOT SCALE = 48,0000' / in.	CHECKED - _____	REVISED - _____			SCALE: _____ SHEET _____ OF _____ SHEETS	STA. _____ TO STA. _____	CONTRACT NO. 72051		ILLINOIS FED. AID PROJECT
Default	PLOT DATE = Jun-19-2014 09:12:02AM	DATE = _____	REVISED - _____	42BIRS-8, 42SIRS-6, 43OIRS-2						