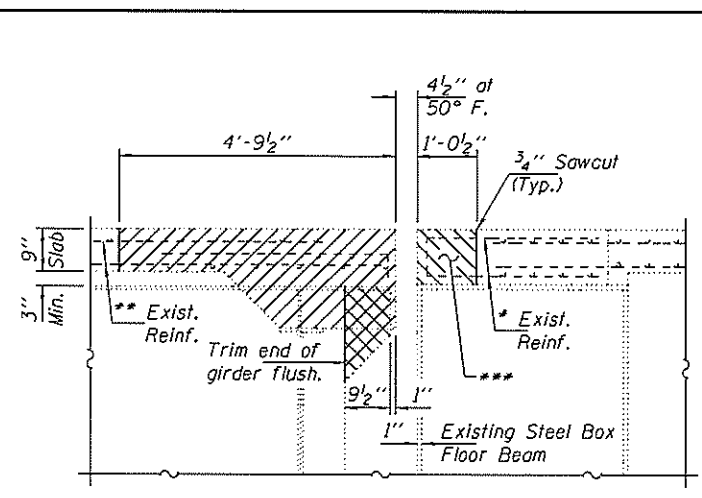


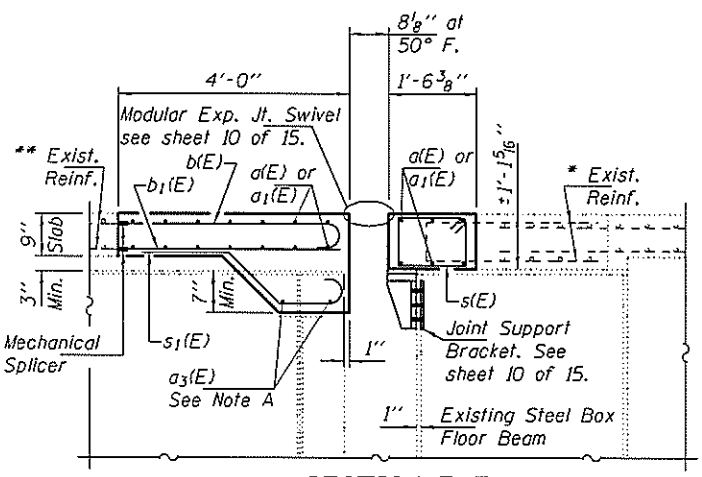
PIERS 8 JOINT REMOVAL PLAN

PIERS 8 JOINT REPLACEMENT PLAN

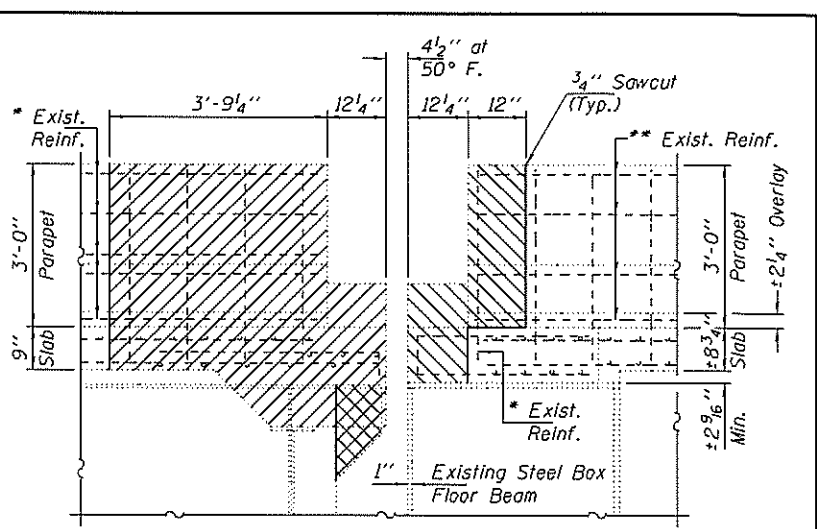


SECTION E-E

Note:
Hatched areas indicate Concrete Removal.
Cross-hatched areas indicate steel removal.
Cost of steel removal included with Concrete Removal

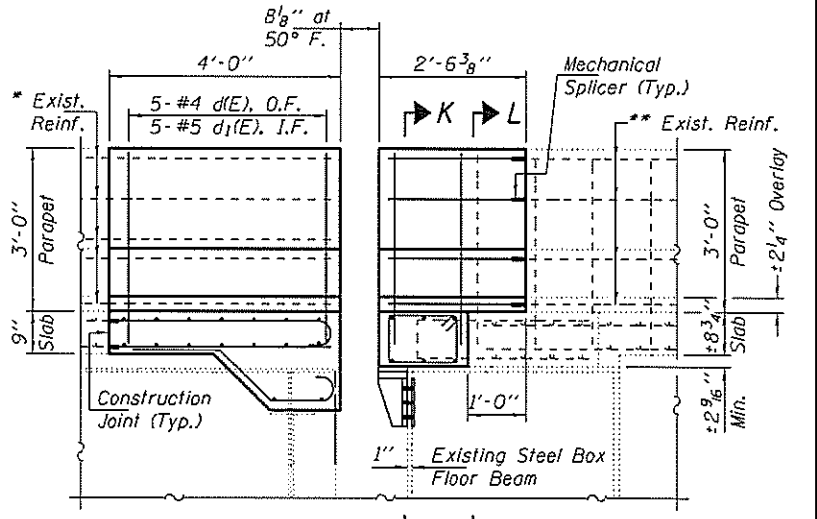


SECTION F-F



SECTION SHOWING PARAPET REMOVAL

(See Section F-F this sheet and Sections K-K & L-L on sheet 10 of 15 for additional information.)



SECTION SHOWING PARAPET REPLACEMENT

(See Section F-F this sheet and Sections K-K & L-L on sheet 10 of 15 for additional information.)

BILL OF MATERIAL (PIER 8)

Bar	No.	Size	Length	Shape
a1(E)	20	#6	15'-6"	
a2(E)	8	#6	5'-7"	
a3(E)	4	#5	13'-8"	
b1(E)	44	#5	3'-9"	
b2(E)	38	#5	4'-1"	
d1(E)	10	#5	3'-11"	L
d3(E)	4	#5	4'-6"	L
d4(E)	4	#5	4'-11"	L
e(E)	16	#5	2'-2"	
s1(E)	32	#5	4'-9"	
s2(E)	32	#5	4'-5"	
Concrete Removal			Cu. Yd.	9.5
Concrete Superstructure			Cu. Yd.	9.5
Bar Splicers			Each	20
Mechanical Splicers			Each	98
Reinforcement Bars, Epoxy Coated			Pounds	1910

Note A:
Place a3(E) bars below Support Boxes.
Leave portion of bar exposed during Stage I Construction. See Section F-F.

Note B:
** 38-#5 b2(E) bars at ±12" cts. (Top) (18-Stage I & 20-Stage II)
** 44-#5 b1(E) bars at ±9" cts. (Bott.) (21-Stage I & 23-Stage II) (16 between beams; 6 at overhangs)
Mechanically Spliced to exist. #5 bars.
Cut to fit at Support Boxes.

Note C:
16-#5 s1(E) bars between beams (Typ.)
Lap with bottom #5 a1(E) or a2(E) bars.
Trim hooks where necessary to miss Support Boxes.

* Existing reinforcement bars extending into the removal area shall be cleaned, straightened and incorporated into the new construction. Any reinforcement bars that are damaged during concrete removal shall be replaced with an approved bar splicer or anchorage system. Cost included with Concrete Removal.

** Cut existing reinforcement 6" from removal line to facilitate installation of Mechanical Splicers.

*** Care shall be taken during removal not to damage the existing steel box floor beam. Any damage to the floor beam shall be repaired at the Contractor's expense.

DESIGNED ATH
CHECKED GGE
DRAWN Kyle M. Steffen
CHECKED ATH GGE

EXAMINED
PASSED
ACTING ENGINEER OF STRUCTURAL SERVICES
ACTING ENGINEER OF BRIDGES AND STRUCTURES

DATE JUNE 24, 2014
REVISED
REVISED

STATE OF ILLINOIS
DEPARTMENT OF TRANSPORTATION

PIER 8 JOINT REMOVAL & REPLACEMENT DETAILS
SN 001-0068

F.A. RTE.	SECTION	COUNTY	TOTAL SHEETS	SHEET NO.
63	(12)B1JR,1-T	ADAMS	31	21
CONTRACT NO. T2G80			ILLINOIS FED. AID PROJECT	