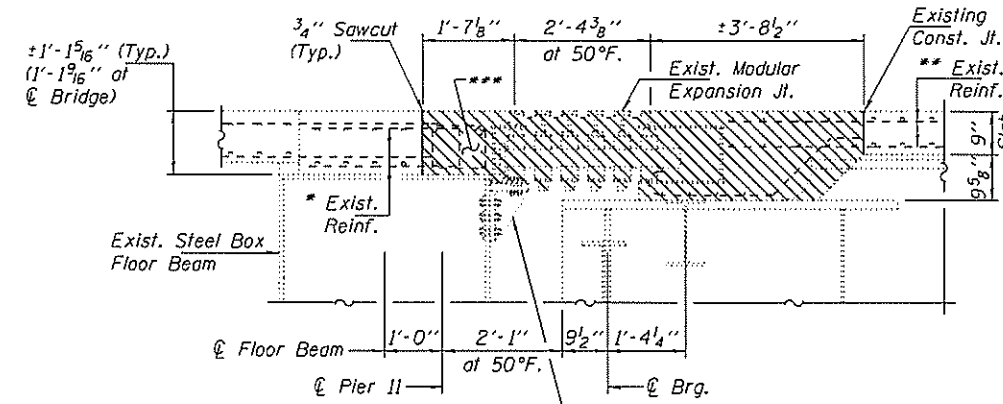


Note A:
 ** 38-#5 b₂(E) bars at ±12" cts. (Top) (18-Stage I & 20-Stage II)
 ** 44-#5 b₃(E) bars at ±9" cts. (Bott.) (21-Stage I & 23-Stage II)
 (16 between beams; 6 at overhangs)
 Mechanically Spliced to exist. #5 bars.
 Cut to fit at Support Boxes.

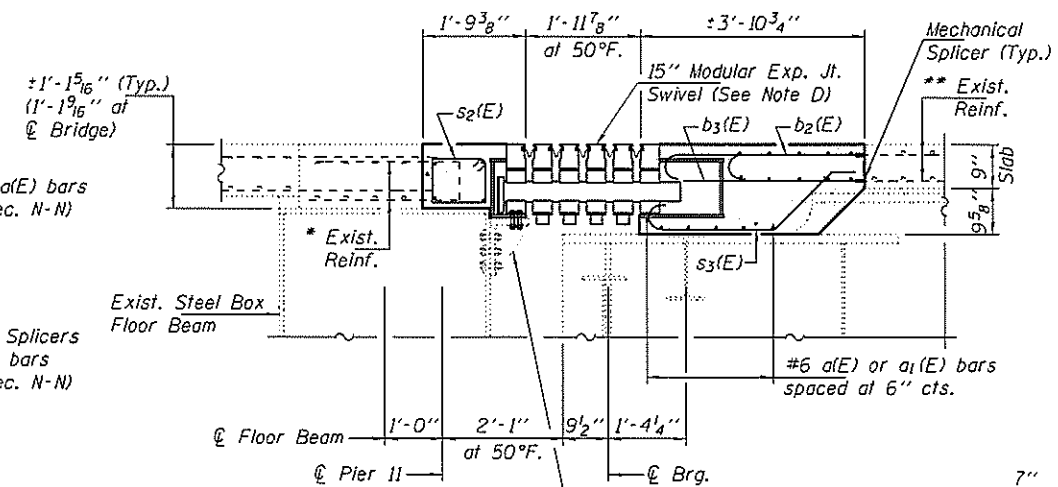
Note B:
 16-#5 s₃(E) bars between beams (Typ.)
 Lap with bottom #5 a₁(E) or a₁(E) bars.
 Trim hooks where necessary to miss
 Support Boxes.

Note C:
 Existing Parapet Plate Assembly to be
 removed, stored & reinstalled after new
 Expansion Joint Construction is complete.
 Use new 5/8" φ H.S. Socket Button-Head Cap
 Screws in existing cast-in-place inserts.



Existing Brackets to be reused.
 For details see sheets 7 & 8 of 15.

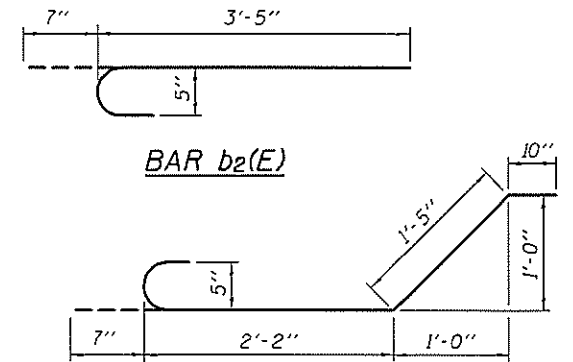
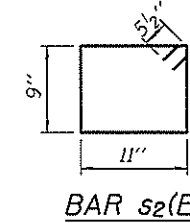
SECTION M-M



Existing Brackets to be reused.
 For details see sheets 7 & 8 of 15.

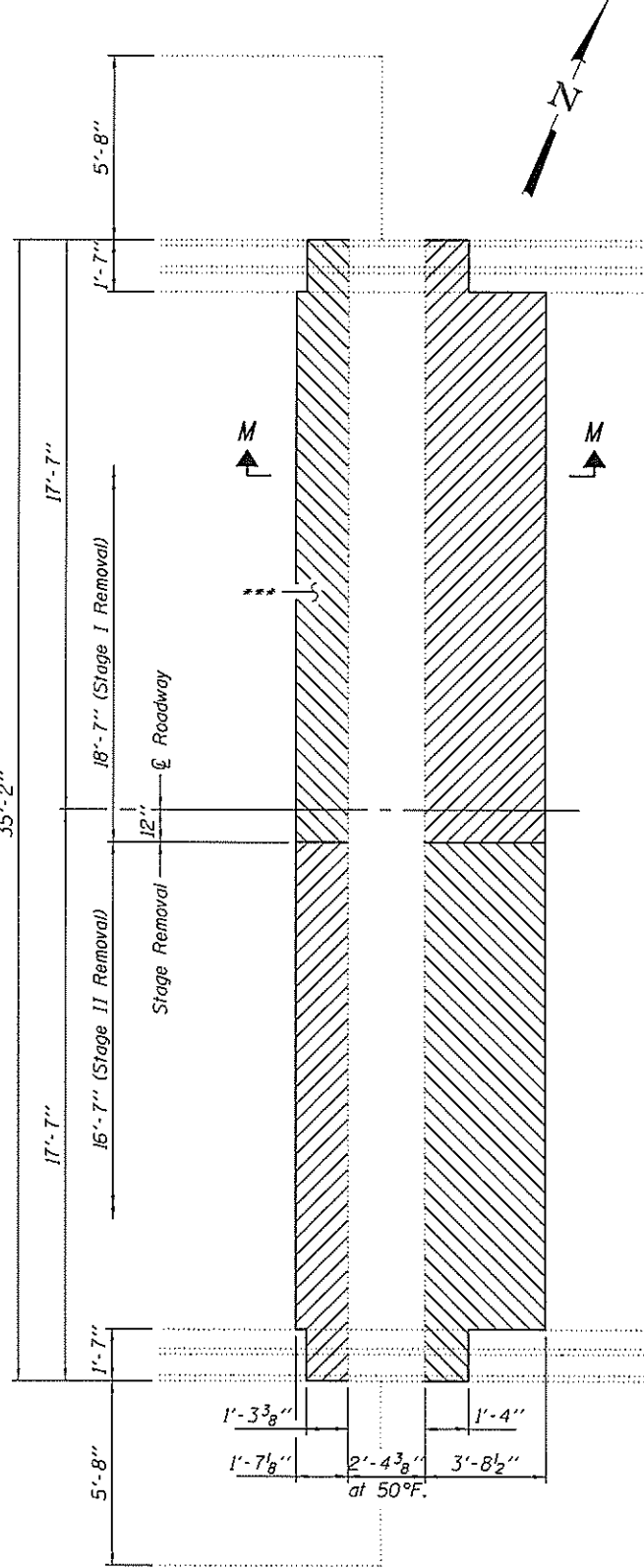
SECTION N-N

Note D:
 Number of rails determined by manufacturer.
 Support Boxes to be rigidly attached to diaphragms,
 beams and floor beam by adjustable brackets, stools
 or shims as determined by manufacturer.

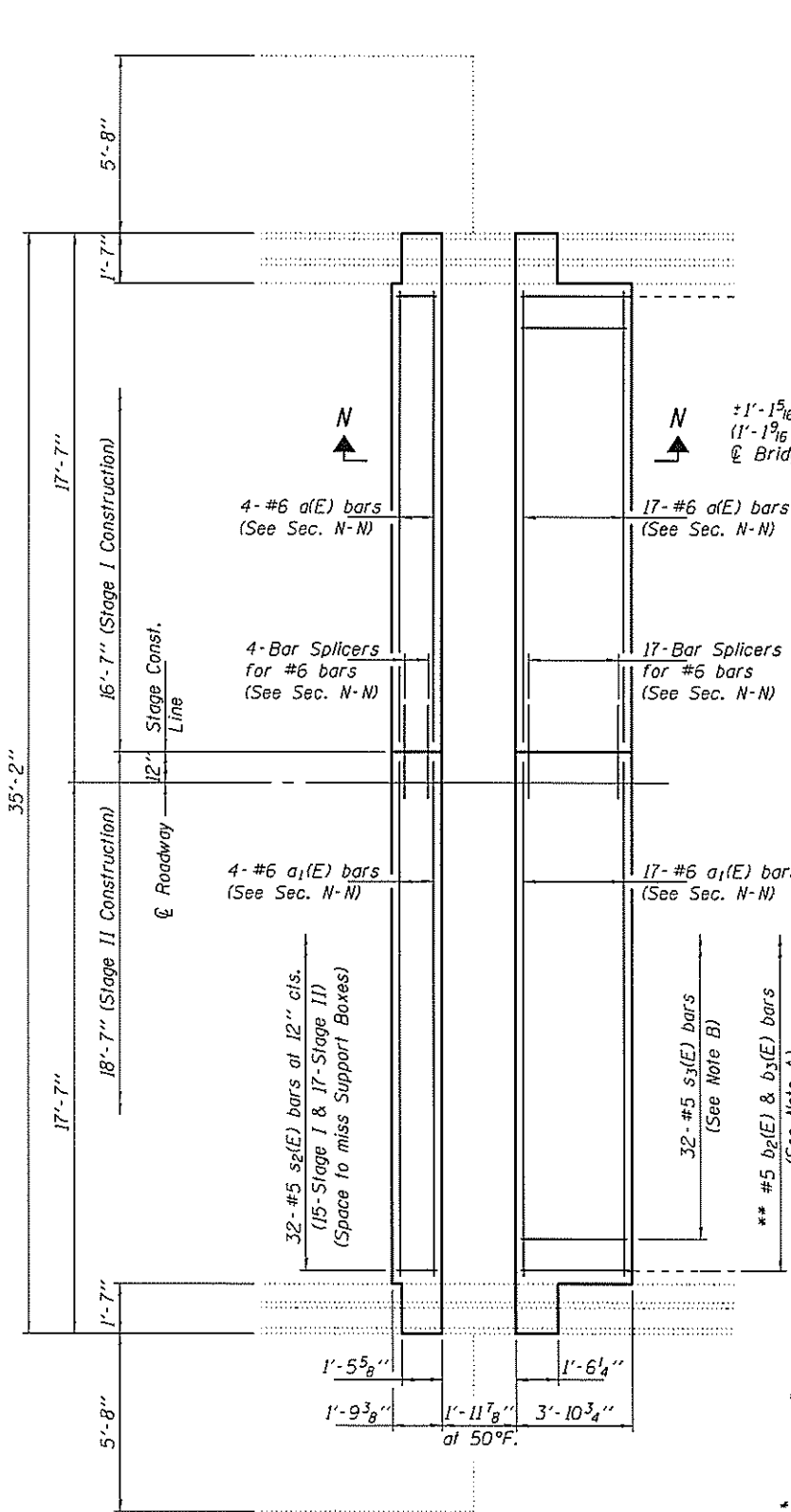


BILL OF MATERIAL (PIER 11)

Bar	No.	Size	Length	Shape
a ₁ (E)	42	#6	15'-6"	—
a ₁ (E)	42	#6	17'-6"	—
b ₂ (E)	38	#5	4'-0"	—
b ₃ (E)	44	#5	3'-6"	—
s ₂ (E)	32	#5	4'-3"	□
s ₃ (E)	32	#5	5'-0"	⌋
Concrete Removal			Cu. Yd.	9.3
Concrete Superstructure			Cu. Yd.	9.3
Bar Splicers			Each	42
Mechanical Splicers			Each	82
Reinforcement Bars, Epoxy Coated			Pounds	2700



PIER 11 JOINT REMOVAL PLAN



PIER 11 JOINT REPLACEMENT PLAN

DESIGNED ATH
 CHECKED GGE
 DRAWN Kyle M. Steffen
 CHECKED ATH GGE

EXAMINED
 PASSED
 ACTING ENGINEER OF STRUCTURAL SERVICES
 ACTING ENGINEER OF BRIDGES AND STRUCTURES

DATE JUNE 24, 2014
 REVISED
 REVISED

STATE OF ILLINOIS
 DEPARTMENT OF TRANSPORTATION

PIER 11 JOINT REMOVAL & REPLACEMENT DETAILS
 SN 001-0068

SHEET NO. 6 OF 15 SHEETS

F.A. R.T.E. 63
 SECTION 12(B)JR, I-7
 COUNTY ADAMS
 TOTAL SHEETS 31
 SHEET NO. 22
 CONTRACT NO. T2G80
 ILLINOIS FED. AID PROJECT