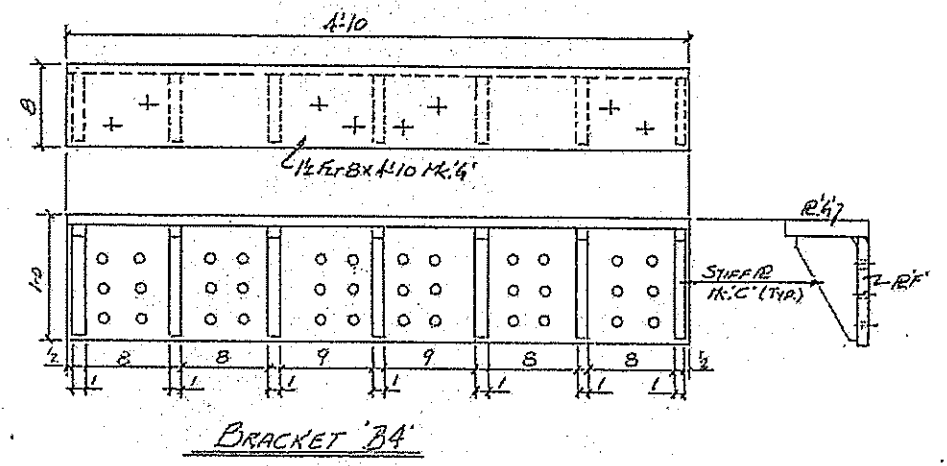


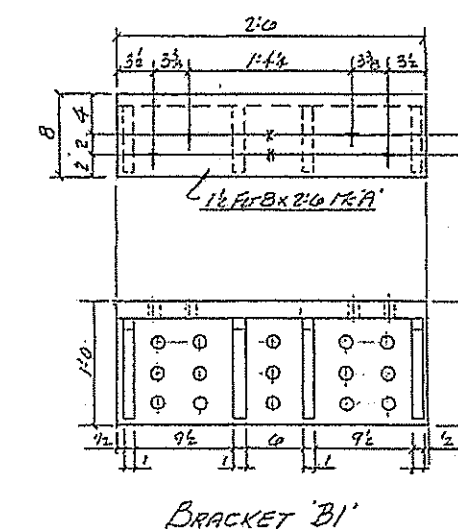
FOR INFORMATION ONLY



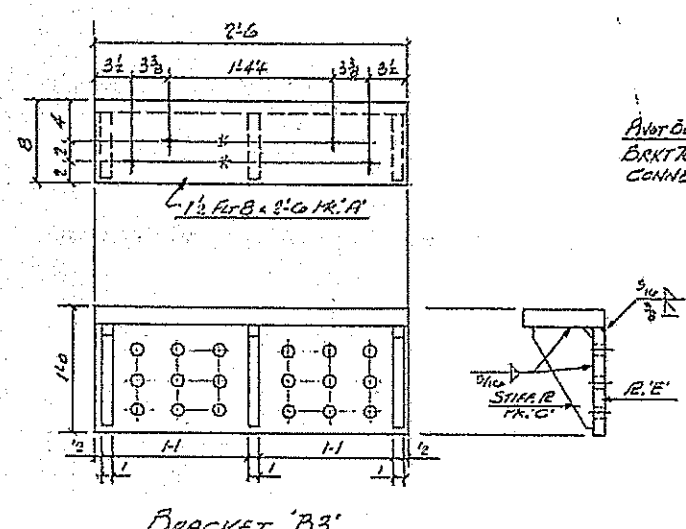
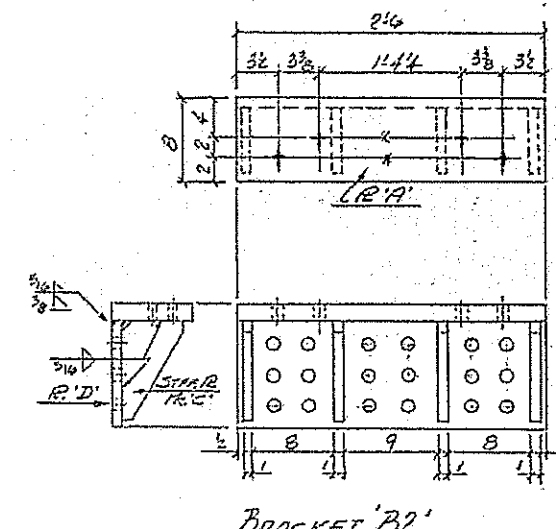
BILL OF MATERIALS

ITEM	QUANTITY	UNIT	MATERIAL DESCRIPTION	PRICE	AMOUNT	WEIGHT
4	51	6	BRACKETS			1038
4	A		1/2" RB X 2'-4"			408
4	B		1" RB 10 1/2" X 2'-6"			358
16	C		1" RB 6 X 10			272
1	B2	6	BRACKETS			260
1	A		1/2" RB X 2'-4"			102
1	D		1" RB 10 1/2" X 2'-6"			90
4	C		1" RB 6 X 10			68
54		6	1/2" FB 3 X 0'-9"			203
168		6	7/8" X 3 3/4" HEX HD BOLT	325		138
168		6	3/8" NYL HEX NUT	DN		51
168		6	7/8" HARD WSHR			17
1	B3	4	BRACKET			243
1	A		1/2" RB X 2'-4"			102
1	E		1" RB 10 1/2" X 2'-6"			90
3	C		1" RB 6 X 10			51
40		6	7/8" X 3 3/4" HEX HD BOLT	325		33
40		6	3/8" NYL HEX NUT	DN		12
40		6	7/8" HARD WSHR			3
2	B4	4	BRACKET			979
2	F		1" RB 10 1/2" X 4'-10"			346
2	G		1/2" RB X 4'-10"			395
14	C		1" RB 6 X 10			238

TOTAL WEIGHT = 2972 LB

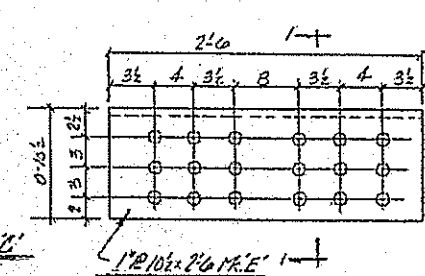
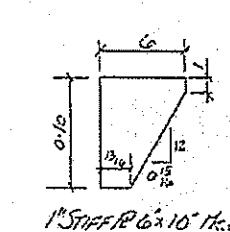
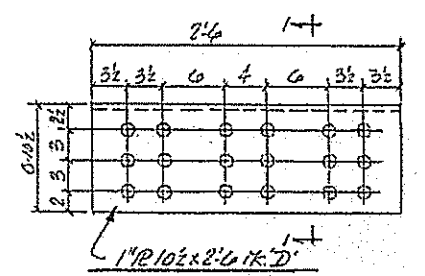
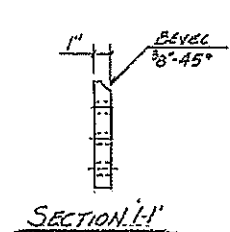
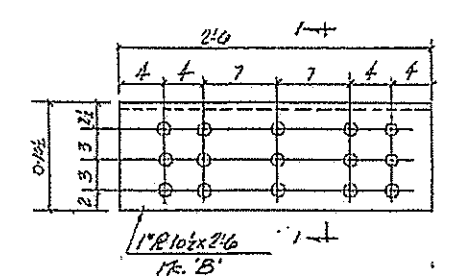


* FIELD DRILL USING PIVOT BOX AS TEMPLATE (TYPICAL)



BRKT FOR BR. CONNECTION

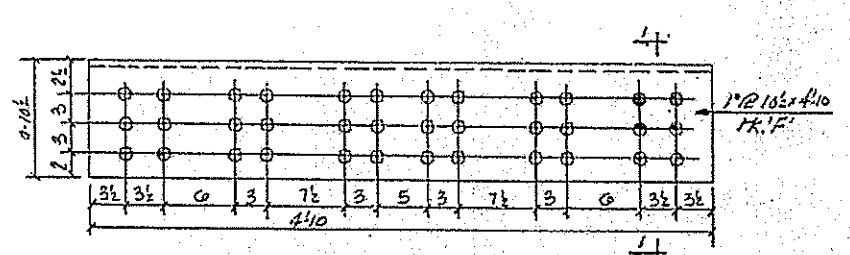
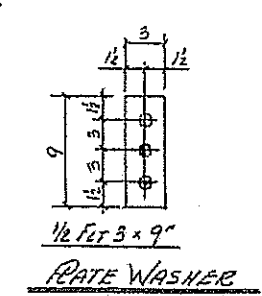
PIVOT BOX TO BRKT TOP R CONNECTION



MATERIAL - A36 STEEL
BOLTS - A325

NOTE - (2) 1/4" DIA. (2) 1/2" DIA. SHIM PLATES BY PIVOT BOX MFG.

NOTE - ALL HOLES 1/8" FINISH



FINISH
STRESS RELIEVE AFTER FAB.
PER SECT 4.4 OF BRIDGE WELDING CODE
HOT DIP GALV. PER M111
BOLTS NUTS & WASHERS - HOT DIP GALV. PER ARSHTO 14232

FAP 63 (US24)
SECTION (1-2B-1) I-2
ADAMS COUNTY, ILLINOIS
CONTRACT # 92999
S.N. 001-0008

BRACKETS		
SCALE:	APPROVED BY:	DRAWN BY: B.D.
DATE: 7-7-97		REVISED: 7/7/97
CONTR: HALVERSON CONST CO.		REV: B-4-97
J.H. BOTTING		DRAWING NUMBER: 1

DESIGNED: ATH	EXAMINED: Timothy A. Anzani	DATE: JUNE 24, 2014
CHECKED: GGE	PASSED: ACTING ENGINEER OF STRUCTURAL SERVICES	
DRAWN: Kyle M. Steffen	ACTING ENGINEER OF BRIDGES AND STRUCTURES	
CHECKED: ATH GGE		

STATE OF ILLINOIS
DEPARTMENT OF TRANSPORTATION

MODULAR JOINT SUPPORT BRACKETS - FOR INFORMATION ONLY
SN 001-0068

F.A. RTE. 63	SECTION (12B) JR. 1-7	COUNTY ADAMS	TOTAL SHEETS 31	SHEET NO. 24
CONTRACT NO. 72680				ILLINOIS FED. AID PROJECT